



NOAA - National Weather Service

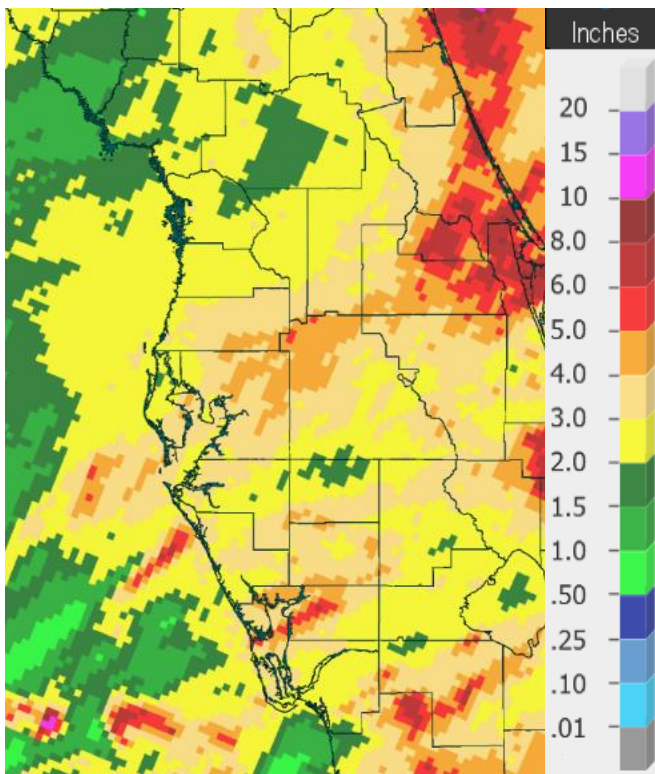
Tampa Bay Area

2525 14th Avenue SE, Ruskin, Florida 33570

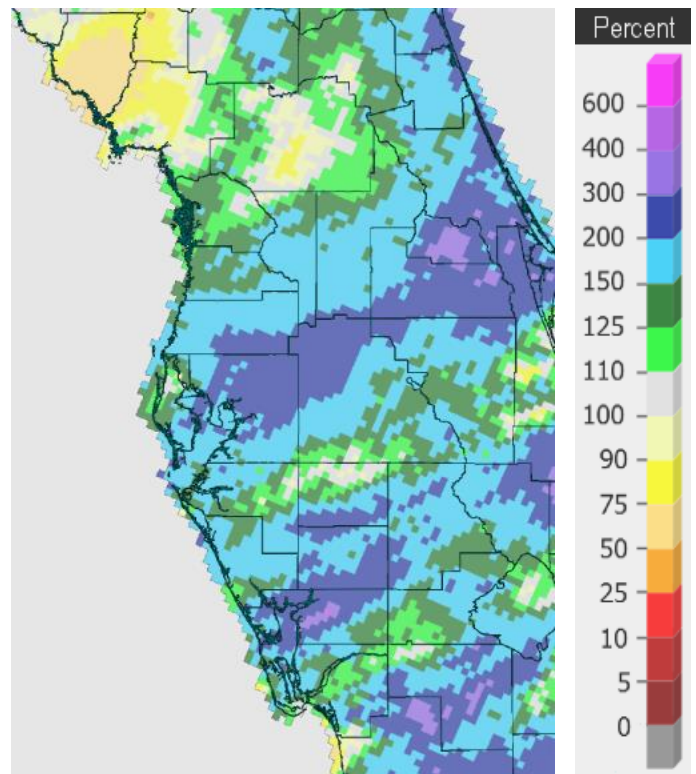
813-645-2323 <https://weather.gov/tampabay>

Preliminary November and Autumn (Sep/Oct/Nov) 2021 Climate Summary

We've been on a temperature rollercoaster during November 2021 with cold fronts moving through each week causing warm and somewhat humid conditions ahead of them followed by cooler drier weather which has led to average temperatures being slightly below normal for the month. Most of these fronts were uneventful bringing just a few showers, but the first one early in the month did bring some widespread heavy rainfall to the region with most areas receiving more rainfall in one day than they usually see during the entire month of November.



Rainfall Nov 1-27, 2021



Percent of Normal

As for Autumn so far, we had near normal temperatures in September, mostly above normal temperatures in October, and mostly below normal temperatures so far in November. Rainfall has been somewhat variable with totals ranging from less than 8 inches to over 19 inches.

On the following pages are tables of the Top Ten Warmest, Coolest, Wettest, and Driest Novembers and Autumns at some official NWS locations, which include the average/total for this November and Autumn where available, and the 1991-2020 Normal (average) temperature and rainfall for November and Autumn.

CHIEFLAND 5 SE (records began in July 1956):

Warmest Novembers		Coolest Novembers		Wettest Novembers		Driest Novembers	
1	69.4 in 1985	1	56.6 in 1976	1	7.52 in 1972	1	Trace in 1978
2	69.2 in 1998	2	56.7 in 2008	2	6.47 in 1997	2	0.15 in 2012
3	68.9 in 1986	3	57.3 in 1970	3	6.02 in 1987	3	0.25 in 2016
4	68.6 in 1994	4	58.2 in 1962	4	5.94 in 2002	4	0.33 in 1956
5	67.5 in 1982	5	58.3 in 1968	5	5.25 in 1958	5	0.35 in 1970
6	67.1 in 2020	6	59.2 in 1969	6	4.95 in 1983	6	0.48 in 1998
7	66.9 in 1973	7	59.4 in 2014	7	4.80 in 1963	7	0.61 in 1990
8	66.5 in 1958	8	59.7 in 1984	8	4.73 in 2013	8	0.62 in 1991
9	66.3 in 1978	9	59.8 in 1963	9	4.55 in 1981	9	0.66 in 2001
10	66.1 in 2003	10	60.0 in 2012	10	4.50 in 1986	10	0.82 in 1993
			60.0 in 1983				

Average Temperature for Nov 1-24, 2021 = 60.7°
 Normal Temperature for November at CHIF1 = 62.7°

Total Rainfall for Nov 1-24, 2021 = 2.82 inches
 Normal Rainfall for November at CHIF1 = 2.22 inches

Warmest Autumns		Coolest Autumns		Wettest Autumns		Driest Autumns	
1	75.2 in 2018	1	67.1 in 1976	1	26.52 in 2004	1	2.05 in 1978
2	75.0 in 2020	2	67.9 in 2008	2	24.26 in 1983	2	3.83 in 2008
3	74.9 in 1998	3	68.7 in 2006	3	20.54 in 1964	3	4.20 in 1961
4	74.2 in 1986	4	68.8 in 1968	4	18.65 in 1959	4	5.13 in 2010
5	73.9 in 1985	5	68.9 in 2000	5	17.59 in 1985	5	5.37 in 1970
6	73.7 in 1959	6	69.1 in 1963	6	16.94 in 1998	6	5.38 in 2003
7	73.4 in 2019		69.1 in 1969	7	16.38 in 1997	7	6.24 in 1991
8	73.0 in 1973	8	69.3 in 1956	8	15.91 in 1960	8	6.61 in 1974
9	72.9 in 2016		69.3 in 1962	9	15.67 in 2002	9	6.65 in 2005
10	72.6 in 1994	10	69.6 in 2010	10	15.26 in 2017	10	6.67 in 1968

Average Temperature for Sep 1 - Nov 24, 2021 = 71.1°
 Normal Temperature for Autumn at CHIF1 = 70.9°

Total Rainfall for Sep 1 - Nov 24, 2021 = 8.40 inches
 Normal Rainfall for Autumn at CHIF1 = 11.21 inches

INVERNESS 3 SE (records began in July 1948):

Warmest Novembers		Coolest Novembers		Wettest Novembers		Driest Novembers	
1	73.1 in 2015	1	59.0 in 1991	1	7.73 in 1980	1	0.00 in 2004
2	71.0 in 2020	2	59.5 in 1976	2	6.40 in 1997		0.00 in 1978
3	70.3 in 1958	3	60.3 in 2002	3	6.21 in 1972	3	0.01 in 2016
4	69.3 in 1964	4	60.5 in 2014	4	5.48 in 1951	4	0.02 in 1950
	69.3 in 1978	5	60.6 in 1997	5	4.90 in 2015	5	0.07 in 2012
6	68.8 in 1957	6	61.0 in 1950	6	4.78 in 2014	6	0.23 in 1993
7	68.6 in 1998	7	61.3 in 2012	7	4.69 in 1988	7	0.25 in 1967
8	68.5 in 1973	8	61.4 in 1995	8	3.77 in 2005	8	0.28 in 1956
	68.5 in 1960	9	61.6 in 2000	9	3.70 in 2017	9	0.36 in 2001
10	68.4 in 2003	10	61.7 in 1949	10	3.46 in 1953	10	0.38 in 1966
							0.38 in 1964

Average Temperature for Nov 2021 = Not Available Yet
 Normal Temperature for November at INVF1 = 64.3°

Total Rainfall for Nov 2021 = Not Available Yet
 Normal Rainfall for November at INVF1 = 1.83 inches

Warmest Autumns		Coolest Autumns		Wettest Autumns		Driest Autumns	
1	76.8 in 2020	1	68.4 in 1976	1	21.53 in 2017	1	2.08 in 1967
2	76.1 in 2015	2	69.4 in 1997	2	21.34 in 1960	2	2.92 in 1978
3	75.1 in 1958	3	70.2 in 1991	3	21.07 in 1950	3	4.19 in 1961
4	75.0 in 2019	4	70.4 in 2006	4	19.55 in 1992	4	4.56 in 1974
5	74.9 in 1998	5	70.6 in 2000	5	19.27 in 1997	5	4.97 in 2010
	74.9 in 1960	6	70.7 in 1987	6	18.83 in 2004	6	5.13 in 2003
	74.9 in 1959	7	70.8 in 2014	7	17.75 in 2016	7	5.37 in 1954
8	74.2 in 1948	8	71.1 in 1956	8	17.32 in 2001	8	5.47 in 2012
9	74.1 in 2009	9	71.3 in 2002	9	16.51 in 1988	9	5.85 in 2000
	74.1 in 2007	10	71.5 in 1996	10	16.40 in 1979	10	6.14 in 1996

Average Temperature for Autumn = Not Available Yet
 Normal Temperature for Autumn at INVF1 = 71.9°

Total Rainfall for Autumn = Not Available Yet
 Normal Rainfall for Autumn at INVF1 = 10.56 inches

BROOKSVILLE AREA (records began in January 1892):

Warmest Novembers		Coolest Novembers		Wettest Novembers		Driest Novembers	
1	73.2 in 2015	1	57.5 in 1901	1	9.31 in 1916	1	0.00 in 1967
2	72.7 in 1948	2	60.3 in 2008	2	9.17 in 1987	2	Trace in 2016
3	72.6 in 1946	3	60.5 in 1892	3	8.30 in 1951		Trace in 1931
4	71.0 in 2020	4	60.8 in 2014	4	7.08 in 2014	4	0.01 in 1978
	71.0 in 1958	5	61.1 in 1923	5	6.64 in 1937	5	0.05 in 1928
6	70.7 in 1994	6	61.3 in 2000	6	6.56 in 1980	6	0.12 in 2001
7	70.5 in 1973	7	61.4 in 2012	7	6.28 in 1999	7	0.15 in 1913
	70.5 in 1896		61.4 in 1917	8	6.14 in 1972	8	0.18 in 1940
9	70.1 in 1905	9	61.8 in 2002	9	5.49 in 1932	9	0.22 in 1956
10	69.8 in 1988	10	61.9 in 1962	10	5.14 in 1988		0.22 in 1924
	69.8 in 1929				5.14 in 1920		0.22 in 1900

Average Temperature for Nov 1-28, 2021 = 63.1°
 Normal Temperature for November at BKV = 65.1°

Total Rainfall for Nov 1-28, 2021 = 2.57 inches
 Normal Rainfall for November at BKV = 1.59 inches

Warmest Autumns		Coolest Autumns		Wettest Autumns		Driest Autumns	
1	76.6 in 2020	1	69.3 in 1892	1	27.84 in 1950	1	2.30 in 1903
2	76.0 in 1911	2	69.5 in 1901	2	24.74 in 1912	2	3.58 in 2008
3	75.9 in 2015	3	70.2 in 1920	3	22.68 in 1894		3.58 in 1978
4	75.7 in 1905	4	70.3 in 2008	4	21.62 in 1947	4	3.87 in 1967
5	75.4 in 1941	5	70.4 in 1923	5	21.50 in 1922	5	3.97 in 1909
	75.4 in 1919	6	70.5 in 2000	6	21.46 in 1995	6	4.10 in 2010
	75.4 in 1915	7	70.8 in 2006	7	21.24 in 1921	7	4.58 in 1940
8	75.3 in 1946	8	70.9 in 2014	8	20.56 in 1938	8	4.61 in 1991
	75.3 in 1927		70.9 in 1894	9	20.36 in 1911	9	5.37 in 2015
10	75.2 in 2018	10	71.0 in 1953	10	19.88 in 1988	10	5.61 in 1961
	75.2 in 1973						

Average Temperature for Sep 1 - Nov 28, 2021 = 73.1°
 Normal Temperature for Autumn at BKV = 72.7°

Total Rainfall for Sep 1 - Nov 28, 2021 = 9.78 inches
 Normal Rainfall for Autumn at BKV = 10.17 inches

ST LEO (records began in April 1895):

Warmest Novembers	Coollest Novembers	Wettest Novembers	Driest Novembers
1 75.1 in 1986	1 60.8 in 1917	1 12.48 in 1988	1 Trace in 1960
2 73.6 in 1985	2 61.3 in 1901	2 8.34 in 1951	2 0.02 in 1978
3 73.2 in 1946	3 61.7 in 1910	3 7.36 in 1987	3 0.03 in 1931
4 73.1 in 1948	4 62.2 in 1930	4 7.21 in 2014	0.03 in 1928
5 72.0 in 1998	5 62.3 in 2014	5 6.22 in 1916	5 0.06 in 2016
6 71.8 in 2015	6 62.5 in 1923	6 6.12 in 1963	6 0.08 in 2012
71.8 in 1994	7 62.6 in 1970	7 6.06 in 1972	7 0.21 in 1993
8 71.5 in 1982	8 62.8 in 1933	8 5.84 in 1911	8 0.22 in 1940
9 71.4 in 1958	62.8 in 1932	9 5.61 in 1918	9 0.23 in 1913
10 71.3 in 2020	62.8 in 1904	10 4.89 in 2020	10 0.26 in 1945
71.3 in 1978			

Average Temperature for Nov 2021 = Not Available Yet
Normal Temperature for November at STLF1 = 66.8°

Total Rainfall for Nov 2021 = Not Available Yet
Normal Rainfall for November at STLF1 = 1.86 inches

Warmest Autumns	Coollest Autumns	Wettest Autumns	Driest Autumns
1 77.9 in 1985	1 69.8 in 1917	1 25.80 in 1988	1 1.52 in 1978
2 77.4 in 1986	2 70.1 in 1903	2 25.13 in 1912	2 3.19 in 1940
3 76.5 in 2020	3 70.2 in 1930	3 24.60 in 1922	3 3.56 in 2010
76.5 in 1998	4 70.7 in 1920	4 22.73 in 1953	4 3.81 in 1909
5 76.4 in 2007	5 71.0 in 1976	5 21.77 in 1997	5 4.14 in 1967
6 76.2 in 1946	71.0 in 1923	6 21.48 in 1982	6 4.76 in 1991
7 76.1 in 2009	7 71.1 in 1910	7 21.40 in 1950	7 5.09 in 2008
76.1 in 1941	8 71.4 in 1943	8 21.29 in 1921	8 5.11 in 2018
9 75.9 in 2004	9 71.5 in 2014	9 20.71 in 1949	9 5.33 in 1931
10 75.8 in 2018	10 71.8 in 1956	10 20.35 in 2004	10 5.63 in 1961
75.8 in 2003	71.8 in 1922		

Average Temperature for Autumn 2021 = Not Available Yet
Normal Temperature for Autumn at STLF1= 73.6°

Total Rainfall for Autumn 2021 = Not Available Yet
Normal Rainfall for Autumn at STLF1 = 11.55 inches

TARPON SPRINGS (records began in January 1892):

Warmest Novembers	Coollest Novembers	Wettest Novembers	Driest Novembers
1 75.9 in 1986	1 59.6 in 2004	1 9.13 in 1988	1 0.00 in 2016
2 74.4 in 1985	2 60.0 in 1901	2 8.18 in 1916	2 Trace in 1939
3 74.3 in 1946	3 61.5 in 1917	3 6.99 in 1997	Trace in 1931
4 73.5 in 2015	4 61.7 in 1962	4 6.63 in 1992	4 0.02 in 1978
5 72.6 in 1994	61.7 in 1892	5 6.09 in 2014	5 0.06 in 1933
6 72.3 in 1998	6 61.9 in 1910	6 5.80 in 1963	6 0.08 in 1942
7 71.8 in 2003	7 62.5 in 1904	7 5.57 in 1920	7 0.09 in 1940
8 71.6 in 1896	8 62.6 in 2014	8 5.49 in 2020	0.09 in 1928
9 71.4 in 1982	62.6 in 1970	9 5.19 in 1955	9 0.10 in 1930
10 71.3 in 1929	10 63.0 in 1976	10 5.18 in 1896	10 0.13 in 1924
71.3 in 1919	63.0 in 1912		

Average Temperature for Nov 1-28, 2021 = 64.1°

Normal Temperature for November at TRPF1 = 67.5°

Total Rainfall for Nov 1-28, 2021 = 2.75 inches

Normal Rainfall for November at TRPF1 = 1.90 inches

Warmest Autumns	Coollest Autumns	Wettest Autumns	Driest Autumns
1 78.1 in 1985	1 70.8 in 1917	1 28.87 in 1911	1 1.85 in 2005
2 78.0 in 1986	70.8 in 1892	2 28.34 in 1988	2 3.33 in 1978
3 77.9 in 1919	3 71.4 in 1903	3 24.31 in 2014	3 3.44 in 1967
4 77.6 in 2018	4 71.5 in 1976	4 22.25 in 1997	4 4.62 in 2008
5 76.8 in 2020	5 71.7 in 1967	5 21.71 in 1983	5 4.85 in 2010
76.8 in 1946	71.7 in 1901	6 21.70 in 1912	6 4.86 in 1927
7 76.7 in 2015	7 71.9 in 1963	7 21.43 in 1975	7 5.57 in 1909
76.7 in 1994	71.9 in 1962	8 20.78 in 1995	8 5.74 in 1930
9 76.6 in 2019	71.9 in 1940	20.78 in 1959	9 5.99 in 1981
76.6 in 1998	71.9 in 1904	10 20.60 in 1971	10 6.37 in 1961
	71.9 in 1899		6.37 in 1933

Average Temperature for Sep 1 - Nov 28, 2021 = 73.8°

Normal Temperature for Autumn at TRPF1 = 74.8°

Total Rainfall for Sep 1 - Nov 28, 2021 = 12.48 inches

Normal Rainfall for Autumn at TRPF1 = 12.12 inches

TAMPA AREA (records began in April 1890):

Warmest Novembers	Coollest Novembers	Wettest Novembers	Driest Novembers
1 76.3 in 1986	1 61.4 in 1901	1 6.12 in 1963	1 Trace in 1960
2 76.2 in 2015	2 61.9 in 1970	2 5.97 in 1988	2 0.01 in 2016
3 74.6 in 2020	3 62.3 in 1968	3 5.40 in 2020	0.01 in 1978
4 73.7 in 1946	4 62.5 in 1962	4 5.38 in 1944	4 0.04 in 1931
5 73.6 in 1948	5 62.8 in 1976	5 5.26 in 2014	5 0.05 in 1928
73.6 in 1985	6 62.9 in 1969	6 4.89 in 1953	6 0.08 in 1927
7 72.7 in 1958	62.9 in 1917	7 4.85 in 1925	7 0.10 in 2001
8 72.5 in 1998	8 63.3 in 1910	8 4.75 in 1941	0.10 in 1942
9 72.3 in 1994	9 63.4 in 1923	9 4.36 in 1987	9 0.11 in 2007
10 72.1 in 2017	10 63.7 in 1949	10 4.34 in 1916	10 0.12 in 2017
			0.12 in 1974

Average Temperature for Nov 1-28, 2021 = 68.8°

Normal Temperature for November at TPA = 69.8°

Total Rainfall for Nov 1-28, 2021 = 3.52 inches

Normal Rainfall for November at TPA = 1.40 inches

Warmest Autumns	Coollest Autumns	Wettest Autumns	Driest Autumns
1 79.7 in 2020	1 71.0 in 1976	1 24.38 in 1894	1 3.19 in 2010
2 79.0 in 2015	2 71.6 in 1903	2 22.83 in 1912	2 3.30 in 1909
3 78.9 in 2018	71.6 in 1891	3 20.45 in 1997	3 3.62 in 1961
4 78.4 in 1986	4 71.7 in 1968	4 19.80 in 1922	4 4.06 in 1942
5 78.1 in 2019	5 71.8 in 1917	5 19.62 in 1988	5 4.21 in 1940
6 77.9 in 2017	71.8 in 1901	6 19.07 in 1947	6 4.25 in 1913
7 77.8 in 1985	7 71.9 in 1923	7 18.15 in 1953	7 4.35 in 1974
8 77.7 in 2016	8 72.2 in 1892	8 17.60 in 1890	8 5.07 in 1967
9 77.5 in 1919	9 72.3 in 1962	9 16.58 in 1911	9 5.22 in 1984
10 77.2 in 1998	10 72.4 in 1956	10 16.41 in 1975	10 5.33 in 2003
	72.4 in 1910		

Average Temperature for Sep 1 - Nov 28, 2021 = 77.7°

Normal Temperature for Autumn at TPA = 76.6°

Total Rainfall for Sep 1 - Nov 28, 2021 = 12.26 inches

Normal Rainfall for Autumn at TPA = 9.83 inches

ST PETERSBURG (records began in August 1914):

Warmest Novembers		Coolest Novembers		Wettest Novembers		Driest Novembers	
1	77.4 in 1986	1	63.9 in 1917	1	6.94 in 1988	1	0.00 in 1931
2	76.3 in 1985	2	64.3 in 1962	2	6.85 in 1953	2	0.02 in 1960
3	74.9 in 2015	3	64.7 in 1949	3	6.80 in 1987	3	0.03 in 2016
4	74.8 in 1946	4	65.1 in 1976	4	6.18 in 2020		0.03 in 1942
5	74.5 in 1948	5	65.2 in 1995	5	6.04 in 1963	5	0.04 in 2001
6	74.3 in 2020		65.2 in 1951	6	5.71 in 1916	6	0.10 in 1978
7	73.8 in 2005	7	65.3 in 1950	7	5.63 in 1925	7	0.12 in 1974
8	73.7 in 1978	8	65.4 in 1954	8	5.08 in 1954	8	0.14 in 1930
9	73.5 in 1958	9	65.7 in 1956	9	5.03 in 1968	9	0.15 in 1928
10	72.9 in 1994		65.7 in 1923	10	5.02 in 1915	10	0.18 in 1946
	72.9 in 1929						

Average Temperature for Nov 1-28, 2021 = 70.0°

Normal Temperature for November at SPG = 70.6°

Total Rainfall for Nov 1-28, 2021 = 3.38 inches

Normal Rainfall for November at SPG = 1.46 inches

Warmest Autumns		Coolest Autumns		Wettest Autumns		Driest Autumns	
1	80.0 in 1985	1	72.6 in 1917	1	32.75 in 1988	1	2.13 in 2010
2	79.9 in 1986	2	73.2 in 1956	2	30.04 in 1953	2	4.00 in 1990
3	79.8 in 2005	3	73.4 in 1952	3	26.31 in 1986	3	4.49 in 1967
4	79.3 in 2020	4	73.5 in 1954	4	26.30 in 1952	4	4.69 in 2008
5	79.1 in 2015		73.5 in 1953	5	21.83 in 1997	5	4.84 in 1964
6	79.0 in 2018	6	73.6 in 1976	6	21.06 in 1922	6	5.01 in 1940
7	78.9 in 2019		73.6 in 1962	7	20.14 in 1954	7	5.52 in 1927
8	78.4 in 2013		73.6 in 1923	8	19.12 in 1918	8	5.61 in 1966
	78.4 in 1941	9	73.7 in 1943	9	19.07 in 2001	9	5.73 in 1965
10	78.3 in 2010	10	73.9 in 1950	10	18.52 in 1959	10	6.14 in 1939
	78.3 in 1919						

Average Temperature for Sep 1 - Nov 28, 2021 = 78.4°

Normal Temperature for Autumn at SPG = 77.0°

Total Rainfall for Sep 1 - Nov 28, 2021 = 12.93 inches

Normal Rainfall for Autumn at SPG = 10.28 inches

PLANT CITY (records began in September 1892):

Warmest Novembers	Coollest Novembers	Wettest Novembers	Driest Novembers
1 75.7 in 1986	1 61.8 in 1932	1 7.88 in 1953	1 0.00 in 1960
2 74.6 in 2015	2 62.0 in 1930	2 7.34 in 1988	0.00 in 1931
3 74.3 in 1948	3 62.1 in 1917	3 6.89 in 2020	0.00 in 1905
4 74.2 in 2020	4 62.4 in 1933	4 6.75 in 2014	4 0.01 in 2007
5 73.9 in 1946	5 62.6 in 1904	5 6.46 in 1963	5 0.05 in 2012
6 72.7 in 1985	6 62.9 in 1912	6 5.90 in 1918	6 0.10 in 1928
7 72.5 in 1896	7 63.1 in 2014	7 5.56 in 1971	0.10 in 1924
8 72.3 in 1994	8 63.3 in 1962	8 4.63 in 1980	8 0.13 in 1940
72.3 in 1958	63.3 in 1949	9 4.52 in 1987	9 0.15 in 2017
10 71.7 in 1978	10 63.4 in 1926	10 4.41 in 1947	0.15 in 1978

Average Temperature for Nov 1-28, 2021 = 66.8°

Normal Temperature for November at PLCF1 = 69.4°

Total Rainfall for Nov 1-28, 2021 = 4.23 inches

Normal Rainfall for November at PLCF1 = 1.76 inches

Warmest Autumns	Coollest Autumns	Wettest Autumns	Driest Autumns
1 79.6 in 2020	1 70.4 in 1930	1 25.05 in 1947	1 1.89 in 1909
2 78.4 in 2018	2 70.8 in 1932	2 23.20 in 1894	2 1.99 in 1961
3 78.3 in 2019	3 71.2 in 1940	3 23.04 in 1988	3 3.56 in 1940
4 77.9 in 1986	4 71.5 in 2000	4 21.72 in 1953	4 4.08 in 1991
5 77.4 in 2015	5 71.6 in 1976	5 20.54 in 2020	5 4.29 in 1927
6 77.2 in 1985	6 71.7 in 1943	6 20.36 in 2014	6 4.41 in 1990
7 76.4 in 1946	7 72.0 in 1937	7 20.15 in 2004	7 4.55 in 2010
8 76.0 in 2016	72.0 in 1909	8 20.06 in 1998	8 4.57 in 1939
9 75.9 in 1948	9 72.2 in 1968	9 19.92 in 1959	9 4.63 in 1967
75.9 in 1911	10 72.4 in 1926	10 19.76 in 1912	10 4.67 in 2008

Average Temperature for Sep 1 - Nov 28, 2021 = 76.6°

Normal Temperature for Autumn at PLCF1 = 76.1°

Total Rainfall for Sep 1 - Nov 28, 2021 = 13.14 inches

Normal Rainfall for Autumn at PLCF1 = 11.33 inches

LAKELAND AREA (records began in January 1915):

Warmest Novembers	Coollest Novembers	Wettest Novembers	Driest Novembers
1 76.9 in 1986	1 62.6 in 1970	1 7.56 in 2014	1 0.00 in 1924
2 75.4 in 2015	2 62.9 in 1962	2 7.19 in 1988	2 Trace in 2016
3 73.4 in 1985	3 63.0 in 1969	3 6.08 in 1987	Trace in 1960
4 73.3 in 1994	4 63.4 in 1949	4 5.94 in 1941	Trace in 1917
73.3 in 1948	5 63.5 in 1976	5 5.80 in 2020	5 0.03 in 1931
6 73.1 in 1946	63.5 in 1951	6 5.71 in 1963	6 0.05 in 1928
7 73.0 in 2020	63.5 in 1950	7 5.54 in 1980	7 0.07 in 1950
8 71.6 in 2003	8 63.7 in 1968	8 5.37 in 1953	8 0.08 in 2012
71.6 in 1958	9 63.9 in 2008	9 4.59 in 2018	9 0.10 in 1991
10 71.5 in 1998	10 64.0 in 1923	10 4.48 in 1997	10 0.11 in 1940

Average Temperature for Nov 1-28, 2021 = 67.2°

Normal Temperature for November at LLDF1 = 69.2°

Total Rainfall for Nov 1-28, 2021 = 4.24 inches

Normal Rainfall for November at LLDF1 = 1.93 inches

Warmest Autumns	Coollest Autumns	Wettest Autumns	Driest Autumns
1 79.2 in 1986	1 71.5 in 1976	1 22.45 in 2014	1 2.99 in 1961
2 78.6 in 2020	2 72.1 in 1943	2 21.46 in 2004	2 3.21 in 1940
3 78.3 in 2015	3 72.2 in 1923	3 19.78 in 1947	3 4.16 in 1942
4 78.1 in 1985	4 72.3 in 2006	4 19.52 in 1918	4 4.25 in 1927
5 78.0 in 2018	72.3 in 1968	5 18.47 in 1998	5 4.28 in 1934
6 77.4 in 2019	72.3 in 1956	6 18.39 in 1929	6 4.58 in 2010
7 77.0 in 1994	7 72.4 in 1967	7 18.29 in 1953	7 4.69 in 2008
8 76.8 in 2009	8 72.5 in 1940	8 17.36 in 1997	8 5.01 in 1967
9 76.7 in 1990	9 72.6 in 1954	9 17.09 in 1989	9 5.12 in 1978
10 76.6 in 2017	10 72.7 in 1962	10 17.08 in 2020	10 5.35 in 1974
	72.7 in 1953		
	72.7 in 1924		

Average Temperature for Sep 1 - Nov 28, 2021 = 76.1°

Normal Temperature for Autumn at LLDF1 = 75.7°

Total Rainfall for Sep 1 - Nov 28, 2021 = 15.92 inches

Normal Rainfall for Autumn at LLDF1 = 12.59 inches

WINTER HAVEN AREA (records began in January 1941):

Warmest Novembers	Coollest Novembers	Wettest Novembers	Driest Novembers
1 76.8 in 1986	1 63.1 in 1962	1 7.81 in 1988	1 0.00 in 1960
2 75.6 in 1948	2 63.2 in 1970	2 7.13 in 1987	0.00 in 1950
3 75.1 in 2015	3 63.9 in 2008	3 6.76 in 1953	3 Trace in 2011
4 74.9 in 1985	63.9 in 1968	4 6.27 in 1963	4 0.01 in 2012
5 74.5 in 1946	5 64.1 in 1976	5 5.32 in 1994	5 0.07 in 2016
6 73.5 in 2020	6 64.5 in 1949	6 5.21 in 1980	6 0.13 in 1966
7 73.1 in 1994	7 64.6 in 1969	7 4.94 in 1951	7 0.16 in 1942
8 72.6 in 1988	8 64.7 in 1981	8 4.07 in 1995	8 0.19 in 1985
9 72.4 in 1958	9 64.9 in 1950	9 4.00 in 2020	9 0.20 in 2017
10 72.2 in 1998	10 65.0 in 2012	10 3.97 in 1968	0.20 in 1991
	65.0 in 1951		0.20 in 1967

Average Temperature for Nov 1-28, 2021 = 67.8°

Normal Temperature for November at GIF = 69.8°

Total Rainfall for Nov 1-28, 2021 = 3.06 inches

Normal Rainfall for November at GIF = 1.45 inches

Warmest Autumns	Coollest Autumns	Wettest Autumns	Driest Autumns
1 79.2 in 2020	1 71.8 in 1976	1 21.86 in 1987	1 2.72 in 1961
2 79.1 in 2018	2 72.2 in 1968	2 20.61 in 1947	2 3.11 in 2009
3 79.0 in 1986	3 72.5 in 1962	3 20.57 in 1953	3 4.27 in 1967
4 78.7 in 2019	4 73.0 in 1963	4 20.35 in 1960	4 4.29 in 2008
5 78.4 in 1985	5 73.2 in 2006	5 18.82 in 1959	5 4.91 in 1985
6 78.0 in 2015	6 73.3 in 2008	6 18.11 in 1950	6 5.14 in 1942
7 77.2 in 1998	73.3 in 1981	7 17.84 in 2014	7 5.44 in 1978
77.2 in 1989	73.3 in 1953	8 17.59 in 2001	8 5.54 in 2006
77.2 in 1946	9 73.4 in 1943	9 17.16 in 1988	9 5.78 in 1990
77.2 in 1941	10 73.5 in 2000	10 16.36 in 2020	10 5.87 in 2015

Average Temperature for Sep 1 - Nov 28, 2021 = 76.6°

Normal Temperature for Autumn at GIF = 76.4°

Total Rainfall for Sep 1 - Nov 28, 2021 = 8.03 inches

Normal Rainfall for Autumn at GIF = 8.98 inches

BARTOW (records began in June 1892):

Warmest Novembers	Coollest Novembers	Wettest Novembers	Driest Novembers
1 76.4 in 1986	1 60.9 in 1917	1 7.40 in 1987	1 0.00 in 2016
2 75.3 in 2015	2 61.5 in 1970	2 7.36 in 2002	0.00 in 1960
3 74.5 in 1948	3 62.0 in 1910	3 6.52 in 1963	3 0.02 in 1931
4 73.6 in 2013	4 62.3 in 1901	4 6.33 in 1988	4 0.04 in 1966
73.6 in 1985	5 62.6 in 1904	5 5.97 in 1953	0.04 in 1928
6 73.5 in 1946	62.6 in 1892	6 5.80 in 1951	6 0.05 in 2012
7 73.0 in 1994	7 62.9 in 1962	7 4.75 in 1911	7 0.06 in 1950
8 72.9 in 1958	8 63.5 in 2008	8 4.71 in 1937	8 0.09 in 1923
9 72.5 in 2020	63.5 in 1912	9 4.68 in 2015	9 0.10 in 2007
72.5 in 1998	10 63.6 in 1939	10 4.54 in 1983	0.10 in 1974

Average Temperature for Nov 1-21, 2021 = 67.5°

Normal Temperature for November at BARF1 = 68.3°

Total Rainfall for Nov 1-21, 2021 = 2.42 inches

Normal Rainfall for November at BARF1 = 1.49 inches

Warmest Autumns	Coollest Autumns	Wettest Autumns	Driest Autumns
1 77.8 in 2020	1 71.0 in 1894	1 26.99 in 1894	1 3.71 in 1942
77.8 in 2015	2 71.1 in 1892	2 21.30 in 1947	2 4.88 in 2010
3 77.2 in 1998	3 71.4 in 1917	3 20.97 in 1917	3 5.00 in 1940
4 77.1 in 2018	4 71.8 in 1976	4 20.77 in 1922	4 5.02 in 1990
5 76.9 in 2009	5 72.1 in 1895	5 20.38 in 1959	5 5.25 in 1961
6 76.8 in 1946	6 72.3 in 1914	6 20.31 in 1982	6 5.26 in 1939
76.8 in 1919	7 72.4 in 1970	7 19.77 in 1953	7 5.29 in 1984
8 76.5 in 2019	8 72.5 in 1904	8 19.43 in 1902	8 5.47 in 1974
76.5 in 1958	9 72.8 in 1967	9 19.30 in 1960	9 5.57 in 1906
10 76.4 in 1994	72.8 in 1963	10 18.97 in 2004	10 5.90 in 1927
	72.8 in 1935		

Average Temperature for Sep 1 - Nov 21, 2021 = 76.0°

Normal Temperature for Autumn at BARF1 = 74.8°

Total Rainfall for Sep 1 - Nov 21, 2021 = 14.47 inches

Normal Rainfall for Autumn at BARF1 = 11.83 inches

SARASOTA-BRADENTON AREA (records began in January 1911):

Warmest Novembers	Coollest Novembers	Wettest Novembers	Driest Novembers
1 76.1 in 1986	1 63.2 in 1917	1 9.40 in 1997	1 0.00 in 1931
2 75.4 in 2015	2 63.5 in 1949	2 7.62 in 2020	2 Trace in 1940
3 74.7 in 2020	63.5 in 1923	3 6.81 in 1920	Trace in 1928
4 73.2 in 1948	4 64.2 in 1976	4 6.24 in 1925	4 0.02 in 2016
5 73.1 in 1958	5 64.5 in 2008	5 5.68 in 1953	5 0.06 in 2001
6 72.7 in 1994	6 64.6 in 2014	6 5.18 in 1941	0.06 in 1991
7 72.4 in 1985	64.6 in 1981	7 5.15 in 1988	7 0.09 in 1930
8 72.2 in 2013	8 64.7 in 1968	8 4.94 in 1918	8 0.16 in 2007
9 72.1 in 1998	9 64.8 in 1933	9 4.69 in 2002	9 0.20 in 1945
72.1 in 1946	10 65.0 in 1962	10 4.55 in 1972	10 0.21 in 1978
			0.21 in 1950

Average Temperature for Nov 1-28, 2021 = 68.0°

Normal Temperature for November at SRQ = 70.1°

Total Rainfall for Nov 1-28, 2021 = 1.44 inches

Normal Rainfall for November at SRQ = 1.81 inches

Warmest Autumns	Coollest Autumns	Wettest Autumns	Driest Autumns
1 79.7 in 2020	1 71.3 in 1976	1 28.46 in 1953	1 3.64 in 2010
79.7 in 2019	2 72.2 in 1930	2 25.64 in 1962	2 4.01 in 1991
3 78.3 in 2016	3 72.3 in 1943	3 23.66 in 1922	3 5.08 in 1942
4 78.2 in 1986	4 72.5 in 1940	4 23.12 in 1997	4 5.44 in 1974
5 78.0 in 2015	5 72.7 in 1923	5 22.26 in 1912	5 5.61 in 2012
6 77.8 in 2018	6 73.0 in 1981	6 22.01 in 1952	6 5.90 in 2019
7 77.3 in 2007	73.0 in 1944	7 21.30 in 1988	7 5.95 in 1945
8 77.1 in 1998	73.0 in 1937	8 20.43 in 1928	8 6.05 in 1944
77.1 in 1990	9 73.1 in 1968	9 20.29 in 1957	9 6.27 in 1984
10 77.0 in 2013	73.1 in 1956	10 19.80 in 1960	10 6.42 in 1930

Average Temperature for Sep 1 - Nov 28, 2021 = 76.5°

Normal Temperature for Autumn at SRQ = 76.5°

Total Rainfall for Sep 1 - Nov 28, 2021 = 7.77 inches

Normal Rainfall for Autumn at SRQ = 10.57 inches

VENICE (records began in May 1955):

Warmest Novembers	Coollest Novembers	Wettest Novembers	Driest Novembers
1 75.8 in 2015	1 64.2 in 2008	1 7.65 in 1997	1 0.00 in 1991
2 74.1 in 1985	2 64.7 in 1962	2 6.02 in 2020	2 0.02 in 2007
3 73.6 in 1998	3 64.9 in 1981	3 5.85 in 1972	3 0.04 in 2001
73.6 in 1994	64.9 in 1970	4 5.56 in 1983	4 0.06 in 2016
5 73.5 in 2020	5 65.1 in 1956	5 5.55 in 1963	5 0.15 in 1960
6 72.5 in 2013	6 65.2 in 1976	6 4.77 in 1957	6 0.20 in 1993
7 72.3 in 2003	7 65.4 in 1968	7 4.46 in 1980	7 0.30 in 1956
8 72.2 in 1978	8 65.8 in 2014	8 4.14 in 1998	8 0.31 in 1978
9 71.9 in 2011	9 66.0 in 1969	9 3.77 in 1968	9 0.32 in 2012
71.9 in 1982	10 66.8 in 1966	10 3.72 in 2014	0.32 in 2003

Average Temperature for Nov 1-28, 2021 = 67.3°

Normal Temperature for November at VNCF1 = 69.9°

Total Rainfall for Nov 1-28, 2021 = 3.43 inches

Normal Rainfall for November at VNCF1 = 1.54 inches

Warmest Autumns	Coollest Autumns	Wettest Autumns	Driest Autumns
1 78.9 in 2009	1 71.8 in 1976	1 26.44 in 1983	1 3.04 in 1961
2 78.5 in 1998	2 72.1 in 1968	2 25.83 in 1995	2 3.63 in 1981
3 78.4 in 2015	3 72.8 in 2008	3 21.38 in 1997	3 5.24 in 1978
4 78.0 in 2020	72.8 in 1956	4 20.89 in 1960	4 5.81 in 2010
5 77.8 in 2018	5 73.6 in 1974	5 20.27 in 1968	5 6.18 in 1964
77.8 in 2013	6 73.7 in 1987	6 19.23 in 1959	6 6.59 in 1984
77.8 in 1985	73.7 in 1981	7 18.86 in 1982	7 7.16 in 1990
8 77.6 in 2010	73.7 in 1962	8 18.67 in 2014	8 7.38 in 2011
9 77.3 in 1994	9 73.9 in 1977	9 18.33 in 1957	9 7.53 in 2019
10 77.0 in 2017	10 74.0 in 2006	10 18.29 in 1962	10 7.81 in 1965
77.0 in 2011			
77.0 in 2003			

Average Temperature for Sep 1 - Nov 28, 2021 = 76.2°

Normal Temperature for Autumn at VNCF1 = 76.0°

Total Rainfall for Sep 1 - Nov 28, 2021 = 8.28 inches

Normal Rainfall for Autumn at VNCF1 = 12.05 inches

MYAKKA RIVER STATE PARK (Temperature records began in March 1956
and Rainfall records began in Sep 1943):

Warmest Novembers		Coolest Novembers		Wettest Novembers		Driest Novembers	
1	75.8 in 2015	1	62.1 in 1962	1	10.19 in 1997	1	0.00 in 2001
2	75.6 in 1986	2	62.4 in 1969	2	5.13 in 1953	2	0.02 in 1950
3	73.4 in 1998	3	62.8 in 1970	3	5.04 in 1947	3	0.03 in 1991
4	73.2 in 1985	4	63.2 in 1968	4	5.01 in 1972	4	0.07 in 2016
5	72.8 in 2020	5	64.1 in 2008	5	4.87 in 1981	5	0.19 in 2012
6	72.7 in 1958	6	65.3 in 2000	6	4.76 in 2020	6	0.20 in 1944
7	72.3 in 1982	7	65.4 in 2012	7	4.73 in 1958	7	0.30 in 1996
8	72.1 in 2013		65.4 in 1963	8	4.52 in 1963		0.30 in 1993
	72.1 in 1978	9	65.8 in 1976	9	4.45 in 2002		0.30 in 1965
10	71.6 in 2003	10	65.9 in 2002	10	4.42 in 1983	10	0.37 in 1945

Average Temperature for Nov 2021 = Not Available Yet
Normal Temperature for November at MKCF1 = 69.1°

Total Rainfall for Nov 2021 = Not Available Yet
Normal Rainfall for November at MKCF1 = 2.02 inches

Warmest Autumns		Coolest Autumns		Wettest Autumns		Driest Autumns	
1	78.5 in 2015	1	71.7 in 1962	1	25.70 in 1962	1	4.57 in 1961
2	78.3 in 1998	2	72.6 in 1968	2	23.65 in 1997	2	5.85 in 1974
3	78.0 in 2019	3	72.7 in 1976	3	23.43 in 1979	3	6.14 in 1991
	78.0 in 2018	4	72.8 in 1963	4	21.95 in 2014	4	6.52 in 2008
5	77.9 in 1986	5	73.4 in 1970	5	21.67 in 1995	5	7.52 in 1970
6	77.8 in 1985		73.4 in 1969	6	21.13 in 1953	6	7.57 in 1955
7	77.7 in 1991	7	73.5 in 2008	7	20.63 in 1957	7	8.07 in 2012
8	77.5 in 2020	8	73.7 in 2000	8	20.18 in 2001	8	8.67 in 1950
9	76.8 in 2009	9	73.8 in 1992	9	19.62 in 1952	9	8.75 in 1996
	76.8 in 1990	10	73.9 in 1987	10	19.59 in 1994	10	8.84 in 2011

Average Temperature for Autumn 2021 = Not Available Yet
Normal Temperature for Autumn at MKCF1 = 75.6°

Total Rainfall for Autumn 2021 = Not Available Yet
Normal Rainfall for Autumn at MKCF1 = 13.66 inches

WAUCHULA 2 N (records began in January 1933):

Warmest Novembers	Coollest Novembers	Wettest Novembers	Driest Novembers
1 75.7 in 1986	1 61.9 in 2012	1 11.18 in 1987	1 0.02 in 1940
2 74.6 in 2015	2 62.5 in 2014	2 10.38 in 1997	2 0.03 in 1967
3 74.4 in 1948	62.5 in 1949	3 6.43 in 1953	3 0.08 in 1960
4 73.2 in 1946	4 63.2 in 1962	4 5.89 in 1963	4 0.12 in 1991
5 72.7 in 2020	5 63.4 in 1970	5 4.75 in 1972	5 0.16 in 1974
72.7 in 1985	6 63.5 in 1956	6 4.41 in 2002	6 0.17 in 2016
7 72.7 in 1958	7 63.8 in 2000	7 4.37 in 2014	7 0.19 in 2012
8 71.7 in 1988	8 63.9 in 1969	8 3.93 in 2010	8 0.23 in 1944
9 71.4 in 1978	9 64.0 in 1950	9 3.91 in 1937	9 0.24 in 1966
71.4 in 1973	10 64.4 in 1954	10 3.44 in 1988	0.24 in 1956

Average Temperature for Nov 1-28, 2021 = 66.0°

Normal Temperature for November at WAUF1 = 67.8°

Total Rainfall for Nov 1-28, 2021 = 2.24 inches

Normal Rainfall for November at WAUF1 = 1.96 inches

Warmest Autumns	Coollest Autumns	Wettest Autumns	Driest Autumns
1 78.1 in 2009	1 71.6 in 2014	1 27.02 in 1953	1 2.12 in 1961
2 77.9 in 2007	2 71.7 in 2012	2 23.48 in 1947	2 3.84 in 1974
3 77.7 in 1985	3 72.0 in 1956	3 20.13 in 1975	3 4.75 in 1967
4 77.6 in 2020	4 72.1 in 1943	4 20.12 in 1952	4 4.92 in 2008
5 77.5 in 2015	5 72.2 in 1954	5 19.04 in 1987	5 5.10 in 1978
6 77.2 in 1941	6 72.5 in 2010	6 19.02 in 1960	6 5.80 in 1991
7 76.9 in 2018	72.5 in 2006	7 19.00 in 1997	7 6.09 in 1976
8 76.3 in 1946	72.5 in 1953	8 18.33 in 2017	8 6.10 in 1944
9 76.2 in 1989	72.5 in 1944	9 16.90 in 1938	9 6.32 in 1980
10 76.1 in 2019	10 72.6 in 1976	10 16.88 in 1969	10 6.58 in 2003
76.1 in 1990			
76.1 in 1936			

Average Temperature for Sep 1 - Nov 28, 2021 = 74.4°

Normal Temperature for Autumn at WAUF1 = 74.6°

Total Rainfall for Sep 1 - Nov 28, 2021 = 11.39 inches

Normal Rainfall for Autumn at WAUF1 = 11.37 inches

ARCADIA (records began in November 1899)

Warmest Novembers	Coollest Novembers	Wettest Novembers	Driest Novembers
1 74.9 in 1986	1 62.1 in 1901	1 6.69 in 1997	1 Trace in 1996
2 74.7 in 2015	2 62.2 in 2008	2 5.67 in 1947	Trace in 1940
3 74.2 in 1948	3 62.6 in 1970	3 5.11 in 1987	Trace in 1928
4 73.3 in 1958	4 62.7 in 1910	4 5.08 in 2002	4 0.01 in 1931
73.3 in 1946	5 62.8 in 1923	5 4.95 in 1980	5 0.04 in 1950
6 72.7 in 1919	6 63.3 in 1933	6 4.88 in 2020	6 0.05 in 2016
7 72.4 in 2020	7 63.4 in 1949	7 4.82 in 1992	7 0.06 in 2008
8 72.2 in 1902	8 63.7 in 2014	4.82 in 1962	8 0.09 in 2007
9 72.0 in 1911	9 63.8 in 2012	9 4.53 in 2014	9 0.10 in 1991
10 71.9 in 1990	63.8 in 1962	10 4.43 in 1951	0.10 in 1960

Average Temperature for Nov 2021 = Not Available Yet

Normal Temperature for November at ARCF1 = 67.6°

Total Rainfall for Nov 2021 = Not Available Yet

Normal Rainfall for November at ARCF1 = 1.83 inches

Warmest Autumns	Coollest Autumns	Wettest Autumns	Driest Autumns
1 78.0 in 1919	1 71.6 in 1923	1 24.53 in 1952	1 3.03 in 1961
2 77.5 in 2020	2 71.7 in 1976	2 23.19 in 2020	2 4.14 in 1909
3 77.4 in 1911	71.7 in 1910	3 22.94 in 1953	3 4.68 in 1901
4 77.2 in 2015	4 71.8 in 2008	4 22.83 in 1908	4 4.77 in 1946
77.2 in 1986	5 72.2 in 1968	5 20.84 in 1947	5 5.62 in 1925
77.2 in 1902	6 72.5 in 1943	6 20.79 in 1960	6 5.89 in 1942
7 76.9 in 2018	7 72.6 in 1970	7 20.17 in 1962	7 5.97 in 1913
8 76.6 in 1946	72.6 in 1969	8 19.95 in 1910	8 5.98 in 1974
9 76.4 in 1998	9 72.7 in 1990	9 18.88 in 1959	9 5.99 in 1955
76.4 in 1948	72.7 in 1962	10 18.83 in 2017	10 6.00 in 2008
76.4 in 1941			

Average Temperature for Autumn 2021 = Not Available Yet

Normal Temperature for Autumn at ARCF1 = 74.2°

Total Rainfall for Autumn 2021 = Not Available Yet

Normal Rainfall for Autumn at ARCF1 = 12.18 inches

ARCHBOLD BIO STN (records began in January 1969):

Warmest Novembers	Coollest Novembers	Wettest Novembers	Driest Novembers
1 76.0 in 2015	1 62.2 in 2008	1 5.94 in 1987	1 0.00 in 2016
2 75.6 in 1986	2 63.1 in 2012	2 5.16 in 1998	0.00 in 2008
3 73.7 in 2020	3 63.2 in 1970	3 4.52 in 2002	3 0.08 in 1986
4 72.4 in 1992	4 64.2 in 1969	4 4.46 in 1997	4 0.12 in 1970
5 71.7 in 1985	5 64.4 in 1981	5 4.37 in 1992	5 0.13 in 1975
6 71.6 in 1994	6 65.1 in 2014	6 4.17 in 1977	6 0.20 in 1996
7 71.3 in 1978	7 65.3 in 2006	7 4.16 in 1994	7 0.21 in 2012
71.3 in 1973	8 65.4 in 2000	8 3.80 in 1988	8 0.24 in 2000
9 71.2 in 2013	9 66.0 in 1991	9 3.78 in 2005	9 0.29 in 1973
10 70.6 in 2017	10 66.3 in 1997	10 3.52 in 1972	10 0.40 in 2006
70.6 in 2003			
70.6 in 1988			

Average Temperature for Nov 1-22, 2021 = 68.4°
Normal Temperature for November at ACHF1 = 68.9°

Total Rainfall for Nov 1-22, 2021 = 3.13 inches
Normal Rainfall for November at ACHF1 = 1.74 inches

Warmest Autumns	Coollest Autumns	Wettest Autumns	Driest Autumns
1 78.2 in 2015	1 71.6 in 2008	1 22.87 in 2017	1 4.62 in 1996
2 78.0 in 2020	2 72.5 in 2012	2 22.49 in 1987	2 4.86 in 1990
3 77.4 in 1986	3 72.7 in 2006	3 20.74 in 1969	3 5.52 in 2006
4 76.6 in 2018	72.7 in 2000	4 18.09 in 2014	4 5.96 in 1974
5 76.3 in 2019	72.7 in 1976	5 17.33 in 1977	5 6.01 in 2018
76.3 in 1985	6 72.8 in 1997	6 17.04 in 2001	6 6.16 in 2010
7 76.2 in 2017	7 73.0 in 1981	7 16.79 in 1998	7 6.27 in 2008
8 75.8 in 2016	8 73.1 in 1970	8 16.55 in 2016	8 6.53 in 1980
75.8 in 1973	9 73.2 in 2014	9 16.32 in 2005	9 7.16 in 1984
10 75.7 in 2009	73.2 in 1984	10 16.23 in 2004	10 7.36 in 2007

Average Temperature for Sep 1 - Nov 22, 2021 = 75.4°
Normal Temperature for Autumn at ACHF1 = 75.1°

Total Rainfall for Sep 1 - Nov 22, 2021 = 16.95 inches
Normal Rainfall for Autumn at ACHF1 = 12.32 inches

PUNTA GORDA AREA (records began in May 1914):

Warmest Novembers	Coollest Novembers	Wettest Novembers	Driest Novembers
1 78.3 in 1948	1 63.9 in 1917	1 6.91 in 2020	1 0.00 in 1931
2 76.8 in 1986	2 64.2 in 1970	2 5.97 in 1916	2 0.02 in 2012
3 75.9 in 1946	64.2 in 1968	3 5.52 in 2002	3 0.05 in 2016
4 75.5 in 2015	4 65.1 in 2008	4 5.07 in 1987	0.05 in 1990
5 74.3 in 2020	5 65.7 in 1969	5 4.60 in 2014	5 0.07 in 2007
6 74.2 in 1985	6 65.8 in 1966	6 4.54 in 1965	6 0.08 in 1940
7 74.1 in 1958	7 66.1 in 1976	7 4.40 in 1972	7 0.09 in 1993
8 73.8 in 1961	66.1 in 1923	8 4.31 in 1921	8 0.10 in 1929
9 73.6 in 1947	9 67.0 in 2012	9 4.16 in 1951	9 0.11 in 1973
10 73.0 in 1960	67.0 in 1939	10 3.92 in 1998	10 0.12 in 1924
	67.0 in 1914		

Average Temperature for Nov 1-28, 2021 = 69.0°

Normal Temperature for November at PGD = 70.2°

Total Rainfall for Nov 1-28, 2021 = 3.70 inches

Normal Rainfall for November at PGD = 2.12 inches

Warmest Autumns	Coollest Autumns	Wettest Autumns	Driest Autumns
1 79.6 in 1948	1 72.4 in 1917	1 31.25 in 1959	1 5.37 in 2008
2 79.4 in 1986	2 73.0 in 1976	2 24.61 in 1922	2 5.75 in 1961
3 79.3 in 2020	73.0 in 1968	3 23.01 in 1962	3 5.87 in 1974
4 79.1 in 1946	4 73.5 in 1923	4 21.28 in 1953	4 5.91 in 1927
5 78.7 in 2018	5 73.7 in 1930	5 20.82 in 1995	5 5.95 in 1973
78.7 in 1985	6 73.8 in 1914	6 20.64 in 1947	6 6.00 in 1931
7 78.1 in 2015	7 73.9 in 1943	7 20.39 in 1924	7 6.22 in 1991
78.1 in 1947	73.9 in 1940	8 18.72 in 1929	8 6.33 in 1970
9 77.9 in 1960	9 74.0 in 1970	9 18.66 in 1951	9 6.62 in 1978
77.9 in 1951	10 74.1 in 2008	10 18.54 in 1945	10 6.82 in 1920
	74.1 in 1969		
	74.1 in 1966		

Average Temperature for Sep 1 - Nov 28, 2021 = 77.0°

Normal Temperature for Autumn at PGD = 76.5°

Total Rainfall for Sep 1 - Nov 28, 2021 = 11.17 inches

Normal Rainfall for Autumn at PGD = 12.01 inches

FORT MYERS AREA (records began in January 1902):

Warmest Novembers	Coollest Novembers	Wettest Novembers	Driest Novembers
1 78.3 in 1986	1 64.7 in 1917	1 8.06 in 1987	1 Trace in 2016
2 76.7 in 2015	2 64.9 in 1910	2 7.58 in 1998	Trace in 2000
3 75.6 in 1985	3 65.4 in 1956	3 5.67 in 2002	Trace in 1944
75.6 in 1948	4 65.7 in 1949	4 4.60 in 1921	4 0.01 in 1990
5 75.4 in 1994	5 65.9 in 1923	5 4.47 in 2014	5 0.02 in 1950
6 75.0 in 1946	6 66.1 in 1962	6 4.21 in 2020	6 0.03 in 1945
7 74.9 in 2020	7 66.2 in 1969	7 4.11 in 1997	7 0.04 in 1978
8 74.2 in 1978	8 66.3 in 1903	8 3.85 in 1972	8 0.06 in 1905
9 74.0 in 2017	9 66.6 in 1950	9 3.75 in 2005	9 0.08 in 1942
74.0 in 1988	10 66.7 in 1976	10 3.71 in 1922	10 0.09 in 2008
	66.7 in 1970		0.09 in 2007
			0.09 in 1931

Average Temperature for Nov 1-28, 2021 = 71.2°

Normal Temperature for November at FMY = 71.5°

Total Rainfall for Nov 1-28, 2021 = 2.45 inches

Normal Rainfall for November at FMY = 1.78 inches

Warmest Autumns	Coollest Autumns	Wettest Autumns	Driest Autumns
1 80.4 in 1986	1 72.5 in 1903	1 32.14 in 1922	1 5.16 in 1988
2 80.2 in 1985	2 72.7 in 1910	2 27.85 in 1969	2 5.95 in 1942
3 79.8 in 2019	3 72.9 in 1976	3 26.80 in 1924	3 5.96 in 1974
4 79.1 in 2020	4 73.7 in 1908	4 23.34 in 1947	4 5.97 in 1907
79.1 in 2015	5 73.8 in 1913	5 23.33 in 1953	5 6.11 in 1992
6 78.8 in 1979	6 74.0 in 1923	6 22.99 in 1962	6 6.12 in 1906
7 78.7 in 1994	7 74.1 in 1953	7 22.36 in 2020	7 6.31 in 2004
8 78.6 in 2018	8 74.3 in 1909	8 21.74 in 1998	8 6.50 in 1966
9 78.5 in 2007	9 74.4 in 1943	9 21.44 in 1952	9 6.67 in 1978
78.5 in 1990	74.4 in 1914	10 20.90 in 2011	10 6.78 in 1904

Average Temperature for Sep 1 - Nov 28, 2021 = 78.8°

Normal Temperature for Autumn at FMY = 77.2°

Total Rainfall for Sep 1 - Nov 28, 2021 = 14.67 inches

Normal Rainfall for Autumn at FMY = 13.86 inches

For more local climate information, please visit our web page at <http://weather.gov/tampabay> and look within the "Climate and Past Weather" drop down menu above the map of the area.