



NOAA - National Weather Service

Tampa Bay Area

2525 14th Avenue SE, Ruskin, Florida 33570

813-645-2323 <https://weather.gov/tampabay>

October 2019 Climate Summary

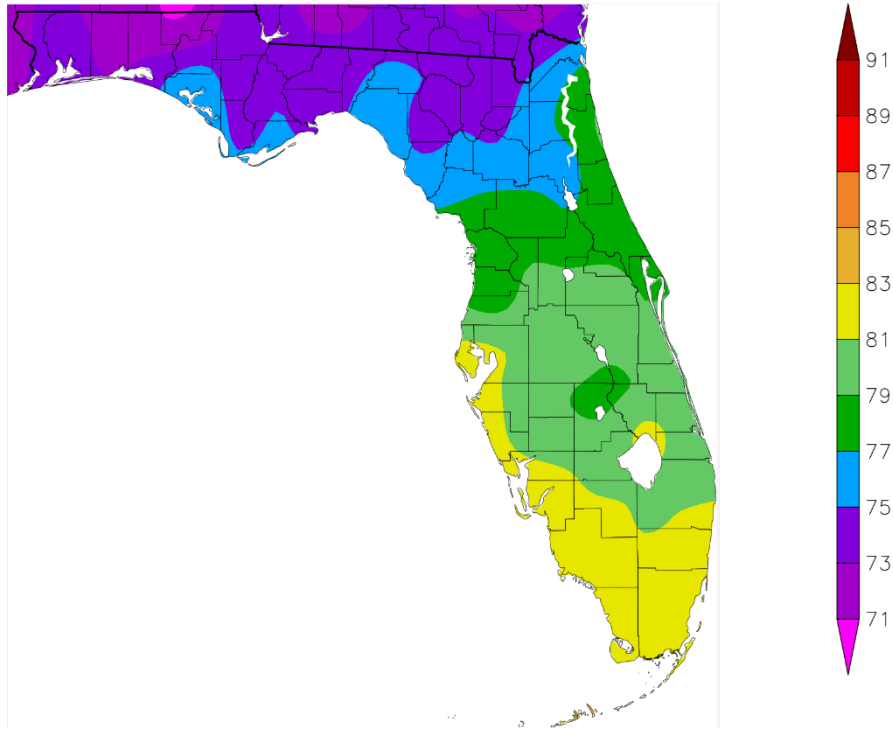
October 2019 was the warmest October on record at numerous locations across West Central and Southwest Florida with temperatures averaging about 3 to 7 degrees above normal.

OCTOBER TEMPERATURE (°F - Top Ten Warmest):

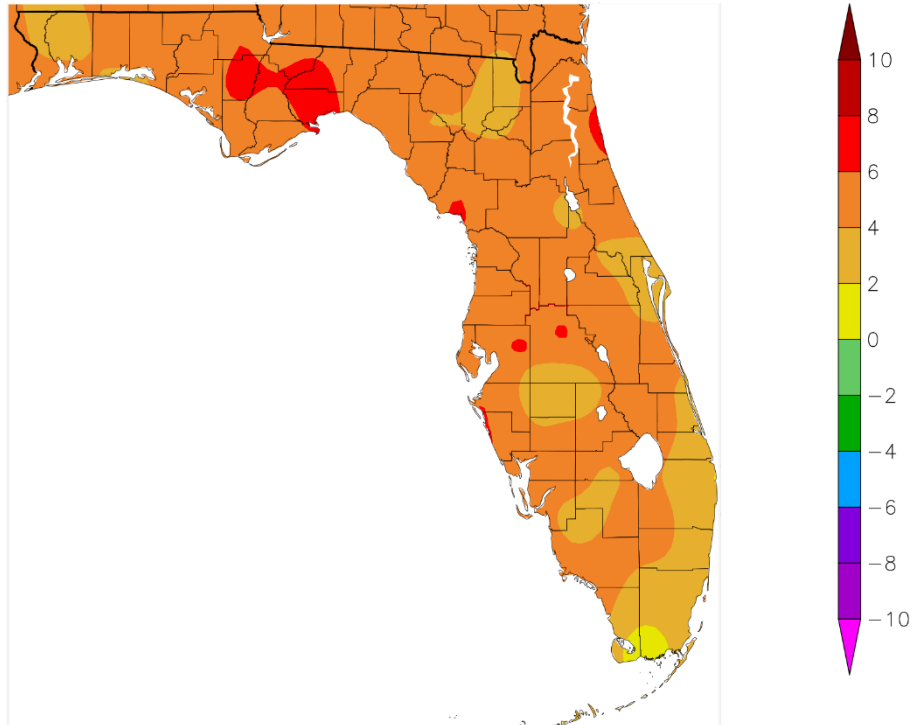
Location	Oct 2019		Normal Oct Temp	Dep fm Normal	Record/	Records Began
	Rank	Avg Temp			Prev Rec Warmest	
Fort Myers Area	1st	82.9°	77.9°	+5.0°	81.7/1980	Jan 1902
Sarasota-Bradenton Area	1st	82.7°	76.3°	+6.4°	80.4/2007	Jan 1911
Winter Haven Area	1st	82.2°	75.7°	+6.5°	80.4/2018	Mar 1941
Venice	1st	81.5°	75.6°	+5.9°	80.4/2009	Apr 1955
Plant City	1st	81.2°	75.0°	+6.2°	79.9/2018	Sep 1892
Tampa Area	1st	81.1°	76.2°	+4.9°	80.4/1919	Apr 1890
Myakka River State Park	1st	80.9°	75.9°	+5.0°	79.9/2007	Mar 1956
Punta Gorda Area	1st(tie)	80.6°	76.9°	+3.7°	80.0/1919	May 1914
Lakeland Area	1st	80.4°	74.9°	+5.5°	79.9/1985	Jan 1915
Archbold Bio Stn	1st	79.3°	74.6°	+4.7°	79.0/2007	Jan 1969
Inverness 3 SE	1st	78.4°	73.0°	+5.4°	78.2/1959	Jul 1948
St Petersburg Area	2nd	81.5°	77.2°	+4.3°	81.7/1985	Aug 1914
Tarpon Springs	2nd	79.8°	74.5°	+5.3°	81.2/1919	Jan 1892
Bartow	2nd	79.6°	76.0°	+3.6°	79.8/2013	Jun 1892
Arcadia	2nd	78.8°	74.9°	+3.9°	80.0/1919	Jan 1899
Chiefland 5 SE	3rd	76.5°	70.8°	+5.7°	77.1/1959	Jun 1956
Wauchula 2 N	4th(tie)	79.3°	76.7°	+2.6°	80.8/2007	Jan 1933
St Leo	5th(tie)	78.4°	75.3°	+3.1°	79.6/1985	Apr 1895
Brooksville Area	5th	78.1°	72.8°	+5.3°	78.5/1959*	Jan 1892
Bushnell 1 E	8th(tie)	75.7°	73.5°	+2.2°	78.0/1959	Jul 1948

* Last of multiple occurrences

Temperature (F)
10/1/2019 - 10/31/2019



Departure from Normal Temperature (F)
10/1/2019 - 10/31/2019

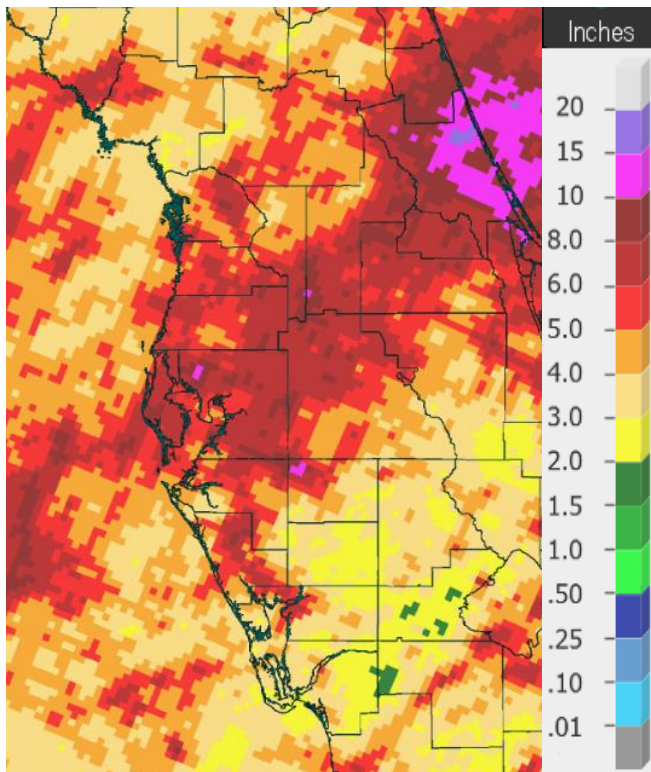


Graphics Source: NOAA Regional Climate Centers

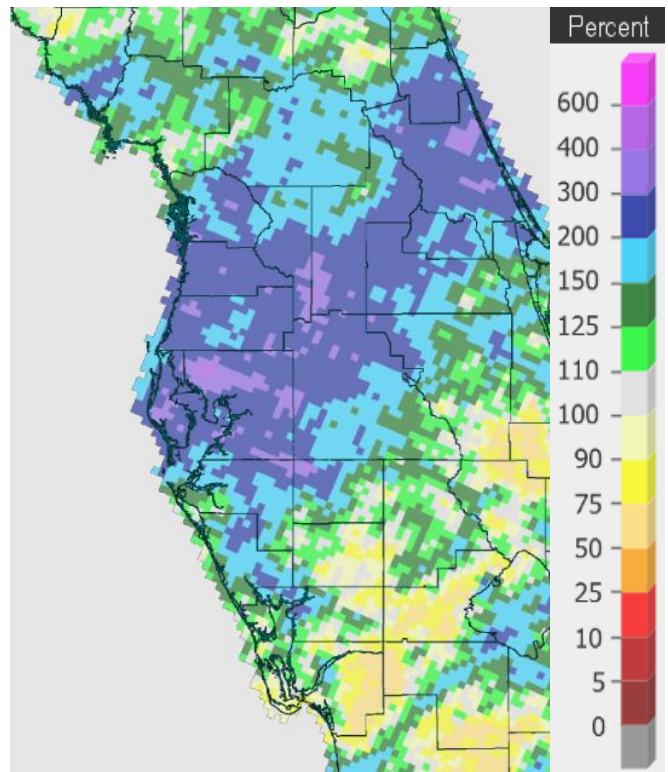
Thanks to Tropical Storm Nestor rainfall from around the Tampa Bay area north and east was well above normal, blue and purple areas in the below right image, while over portions of southwest Florida and the southern interior rainfall continued below normal, yellow and light orange areas. However, in October the average rainfall is much less than the summer months and only averages about 2 to 3 inches across the area.

OCTOBER RAINFALL (inches - Top Ten Wettest):

Location	Oct 2019 Rank	Oct 2019 Rainfall	Normal Oct Rain	Dep fm Normal	Record Wettest	Records Began
Inverness 3 SE	3rd	6.73	2.80	+3.93	10.60/1958	Jul 1948
Plant City	4th	7.32	2.36	+4.96	10.43/1959	Sep 1892
Tampa Area	4th(tie)	6.94	2.26	+4.68	10.33/1922	Apr 1890
Myakka River State Park	5th	6.98	3.27	+3.71	10.01/1951	Sep 1943
Chiefland 5 SE	6th	6.98	3.10	+3.88	8.45/1959	Jun 1956
St Petersburg Area	9th	7.17	2.78	+4.39	17.63/1986	Aug 1914
Lakeland Area	9th	6.19	2.88	+3.31	9.19/2005	Jan 1915



Rainfall for October 2019



Percent of Normal

On the following pages are tables of the Top Ten Warmest, Coolest, Driest, and Wettest Octobers at some official NWS locations, which include the average/total for this October where available, and the 1981-2010 Normal (average) temperature and rainfall for the month of October.

CHIEFLAND 5 SE (records began in June 1956):

Warmest Octobers	Coollest Octobers	Wettest Octobers	Driest Octobers
1 77.1 in 1959	1 66.9 in 1987	1 8.45 in 1959	1 0.00 in 2010
2 76.9 in 2018	2 67.1 in 1976	2 8.17 in 1997	2 0.11 in 2001
3 76.5 in 2019	3 67.4 in 1977	3 7.32 in 1995	3 0.14 in 1973
4 75.5 in 1985	4 67.6 in 1957	4 7.12 in 1971	4 0.15 in 1979
5 75.0 in 1998	5 67.9 in 1967	5 7.01 in 1993	0.15 in 1974
6 74.6 in 2002	67.9 in 1964	6 6.98 in 2019	6 0.17 in 2000
7 74.5 in 2007	7 68.0 in 1974	7 6.44 in 1992	7 0.20 in 1987
8 74.2 in 1971	8 68.5 in 2011	8 6.41 in 2007	8 0.23 in 1981
74.2 in 1970	9 68.6 in 2010	9 6.40 in 2002	9 0.24 in 1984
10 73.7 in 1995	10 69.0 in 2000	10 5.66 in 1983	10 0.39 in 1977

Normal Temperature for October at CHIF1 = 70.8°

Normal Rainfall for October at CHIF1 = 3.10 inches

INVERNESS 3 SE (records began in July 1948):

Warmest Octobers	Coollest Octobers	Wettest Octobers	Driest Octobers
1 78.4 in 2019	1 67.8 in 1987	1 10.60 in 1958	1 Trace in 1974
2 78.2 in 1959	2 68.1 in 1976	2 9.04 in 1992	2 0.03 in 2010
3 77.3 in 1949	3 69.7 in 1977	3 6.73 in 2019	0.03 in 1961
4 76.8 in 2007	4 69.9 in 2011	4 5.81 in 1995	4 0.19 in 1963
5 76.0 in 1970	5 70.1 in 1992	5 5.71 in 1956	5 0.20 in 2000
6 75.7 in 1995	6 70.2 in 1988	6 5.68 in 1960	6 0.62 in 1967
7 75.6 in 1969	7 70.5 in 1997	7 5.53 in 1959	7 0.69 in 2015
8 75.5 in 1971	8 70.6 in 1954	8 5.38 in 1993	8 0.70 in 1987
75.5 in 1960	9 70.8 in 2006	9 5.33 in 1975	9 0.71 in 2018
75.5 in 1950	70.8 in 2001	10 4.91 in 1971	10 0.74 in 1977

Normal Temperature for October at INV1 = 73.0°

Normal Rainfall for October at INV1 = 2.80 inches

BUSHNELL 1 E (records began in July 1948):

Warmest Octobers		Coolest Octobers		Wettest Octobers		Driest Octobers	
1	78.0 in 1959	1	68.1 in 1987	1	7.42 in 1969	1	0.00 in 2010
2	77.9 in 1985	2	69.1 in 2011	2	7.09 in 1995	2	0.09 in 1984
	77.9 in 1949	3	69.7 in 1988	3	6.42 in 1956	3	0.15 in 2000
4	77.2 in 2002		69.7 in 1977	4	6.39 in 1952	4	0.18 in 1974
5	76.2 in 1998	5	70.3 in 1957	5	5.96 in 1959	5	0.19 in 1973
	76.2 in 1950	6	70.4 in 2014	6	5.63 in 2007	6	0.24 in 1963
7	76.0 in 1971		70.4 in 1965	7	5.60 in 1950	7	0.26 in 2001
8	75.7 in 2019		70.4 in 1964	8	5.54 in 1971	8	0.28 in 1977
	75.7 in 2007	9	70.5 in 2008	9	5.29 in 1968	9	0.47 in 2015
	75.7 in 1951	10	70.6 in 1974	10	5.21 in 1992	10	0.56 in 1979
			70.6 in 1967	11	5.15 in 1975		
			70.6 in 1954	12	5.02 in 2019		

Normal Temperature for October at BSHF1 = 73.5°

Normal Rainfall for October at BSHF1 = 2.14 inches

BROOKSVILLE AREA (records began in January 1892):

Warmest Octobers		Coolest Octobers		Wettest Octobers		Driest Octobers	
1	78.5 in 1959	1	69.4 in 1920	1	15.64 in 1921	1	0.00 in 2010
	78.5 in 1919	2	69.7 in 1892	2	12.52 in 1915	2	0.01 in 1974
3	78.4 in 1911	3	70.3 in 2010	3	10.77 in 1995	3	0.07 in 2000
4	78.3 in 1941	4	70.4 in 2000	4	9.63 in 1944	4	0.12 in 1984
5	78.1 in 2019		70.4 in 1952	5	8.97 in 1958	5	0.18 in 1951
6	77.1 in 2007	6	70.5 in 1923	6	8.92 in 1922	6	0.22 in 1963
7	77.0 in 1949	7	70.7 in 1953	7	7.58 in 1936	7	0.28 in 1935
8	76.8 in 1915		70.7 in 1924	8	7.50 in 1952	8	0.30 in 1901
9	76.7 in 1928	9	70.8 in 1943	9	6.87 in 1911	9	0.35 in 1977
	76.7 in 1912	10	70.9 in 2008	10	6.35 in 1910	10	0.36 in 1979
			70.9 in 1896	11	6.02 in 2007		
				12	5.84 in 1941		
				13	5.46 in 1938		
				14	5.39 in 2019		

Normal Temperature for October at BKV = 72.8°

Normal Rainfall for October at BKV = 2.73 inches

ST LEO (records began in April 1895):

Warmest Octobers		Coolest Octobers		Wettest Octobers		Driest Octobers	
1	79.6 in 1985	1	69.2 in 1930	1	15.80 in 1921	1	0.00 in 2010
2	78.9 in 2002	2	69.4 in 1903	2	10.38 in 1924	2	0.03 in 2000
3	78.8 in 1941	3	69.9 in 1920	3	9.66 in 1910	3	0.10 in 1974
4	78.6 in 2007	4	70.0 in 1943	4	8.45 in 1922		0.10 in 1940
5	78.4 in 2019	5	70.1 in 1987	5	7.89 in 2007	5	0.14 in 1963
	78.4 in 2009	6	70.4 in 2011	6	7.49 in 1944	6	0.23 in 1984
	78.4 in 1959	7	70.5 in 1992	7	7.23 in 2012	7	0.29 in 1978
8	78.0 in 1919	8	70.7 in 1917	8	7.11 in 1938		0.29 in 1961
9	77.3 in 1949	9	70.9 in 1976	9	6.68 in 1959	9	0.30 in 1920
	77.3 in 1925	10	71.0 in 1938	10	6.55 in 1915		0.30 in 1907
			71.0 in 1929	11	6.48 in 1969		
				12	6.42 in 1995		
				13	6.20 in 2019		
					in 1982		

Normal Temperature for October at STLF1 = 75.3°
 Normal Rainfall for October at STLF1 = 3.01 inches

TARPON SPRINGS (records began in January 1892):

Warmest Octobers		Coolest Octobers		Wettest Octobers		Driest Octobers	
1	81.2 in 1919	1	70.3 in 1987	1	14.13 in 1995	1	0.02 in 2010
2	79.8 in 2019	2	71.0 in 1940	2	12.43 in 1921	2	0.04 in 2000
3	79.7 in 1985	3	71.1 in 1913	3	10.91 in 1938	3	0.06 in 1940
4	79.2 in 2018	4	71.2 in 1974	4	10.33 in 1911	4	0.07 in 1974
5	79.0 in 1941		71.2 in 1943	5	9.49 in 1975	5	0.08 in 1963
6	78.7 in 2007	6	71.5 in 1938	6	9.20 in 1992	6	0.11 in 1961
7	78.5 in 1911		71.5 in 1907	7	8.13 in 1922	7	0.12 in 1942
8	78.2 in 1949	8	71.6 in 1917	8	7.57 in 1917	8	0.25 in 1905
9	77.9 in 1995		71.6 in 1908	9	6.89 in 1936	9	0.31 in 1979
	77.9 in 1918		71.6 in 1892	10	6.38 in 1968	10	0.34 in 1903
				11	6.35 in 1912		
				12	6.23 in 1959		
				13	6.13 in 1983		
					6.13 in 1952		
				15	6.04 in 2019		

Normal Temperature for October at TRPF1 = 74.5°
 Normal Rainfall for October at TRPF1 = 3.31 inches

TAMPA AREA (records began in April 1890):

Warmest Octobers	Coolest Octobers	Wettest Octobers	Driest Octobers
1 81.1 in 2019	1 70.0 in 1891	1 10.33 in 1922	1 Trace in 2010
2 80.4 in 1919	2 70.8 in 1964	2 9.88 in 1921	2 0.02 in 1940
3 80.0 in 2018	3 70.9 in 1976	3 7.36 in 1952	3 0.03 in 1942
4 79.8 in 2007	4 71.3 in 1987	4 6.94 in 2019	4 0.06 in 2000
5 79.6 in 1959	5 71.7 in 1943	6.94 in 1938	5 0.09 in 1988
6 79.4 in 1941	71.7 in 1913	6 6.26 in 1959	6 0.12 in 1920
7 79.2 in 1985	71.7 in 1908	7 6.21 in 1986	7 0.16 in 1979
8 78.8 in 2002	71.7 in 1903	8 5.67 in 1944	8 0.23 in 1974
9 78.3 in 1911	9 71.8 in 1957	9 5.66 in 1911	9 0.25 in 1961
10 78.2 in 2017	10 72.0 in 1938	10 5.25 in 1924	10 0.29 in 1984 0.29 in 1963

Normal Temperature for October at TPA = 76.2°

Normal Rainfall for October at TPA = 2.26 inches

ST PETERSBURG AREA (records began in August 1914):

Warmest Octobers	Coolest Octobers	Wettest Octobers	Driest Octobers
1 81.7 in 1985	1 72.3 in 1952	1 17.63 in 1986	1 0.00 in 1942
2 81.5 in 2019	2 73.0 in 1987	2 14.12 in 1952	2 Trace in 2010
3 81.4 in 1919	73.0 in 1938	3 10.05 in 1922	3 0.12 in 2000
4 81.0 in 2018	4 73.1 in 1964	4 9.55 in 1938	4 0.14 in 1974
5 80.6 in 1941	5 73.2 in 1953	5 9.13 in 1921	5 0.20 in 1998
6 80.0 in 2002	6 73.4 in 1957	6 8.59 in 1959	6 0.29 in 1961
7 79.9 in 1959	7 73.5 in 1943	7 8.14 in 1918	7 0.30 in 1988
8 79.8 in 2013	73.5 in 1917	8 8.09 in 1944	8 0.31 in 1963
79.8 in 2007	9 73.7 in 1920	9 7.17 in 2019	9 0.35 in 1940
79.8 in 2005	10 74.0 in 2011	10 6.77 in 1917	10 0.37 in 1979
	74.0 in 1956		
	74.0 in 1954		

Normal Temperature for October at SPG = 77.2°

Normal Rainfall for October at SPG = 2.78 inches

PLANT CITY (records began in September 1892):

Warmest Octobers	Coollest Octobers	Wettest Octobers	Driest Octobers
1 81.2 in 2019	1 69.8 in 1940	1 10.43 in 1959	1 0.04 in 2000
2 79.9 in 2018	2 70.0 in 1930	2 9.01 in 1938	2 0.09 in 1940
3 78.9 in 1959	3 70.2 in 1943	3 8.05 in 1924	3 0.10 in 2010
4 78.8 in 1985	70.2 in 1929	4 7.32 in 2019	4 0.14 in 1963
5 78.5 in 1918	5 70.6 in 2000	5 7.18 in 1917	5 0.16 in 1979
6 78.0 in 2007	70.6 in 1987	6 6.86 in 1975	6 0.21 in 1907
78.0 in 1941	70.6 in 1938	7 6.66 in 1952	7 0.26 in 2018
8 77.9 in 2002	8 71.1 in 1913	8 6.43 in 1898	8 0.28 in 1988
9 77.6 in 1971	9 71.2 in 1909	9 6.32 in 1969	9 0.29 in 1961
10 77.4 in 1969	10 71.3 in 1944	10 5.62 in 1986	10 0.37 in 1926
	71.3 in 1942		

Normal Temperature for October at PLCF1 = 75.0°

Normal Rainfall for October at PLCF1 = 2.36 inches

LAKELAND AREA (records began in January 1915):

Warmest Octobers	Coollest Octobers	Wettest Octobers	Driest Octobers
1 80.4 in 2019	1 70.9 in 1976	1 9.19 in 2005	1 0.00 in 2010
2 79.9 in 1985	2 71.0 in 1943	2 7.73 in 1922	2 0.04 in 1974
3 79.3 in 2018	3 71.2 in 1964	3 6.93 in 1917	3 0.11 in 1973
4 78.8 in 1941	4 71.8 in 1974	4 6.72 in 1952	4 0.16 in 2000
78.8 in 1919	71.8 in 1957	5 6.63 in 1959	5 0.18 in 1940
6 78.6 in 2009	71.8 in 1938	6 6.50 in 2011	6 0.19 in 1935
78.6 in 1959	7 71.9 in 1930	7 6.29 in 1938	7 0.23 in 1978
8 78.5 in 2007	8 72.0 in 1924	8 6.23 in 1982	8 0.25 in 1942
9 78.1 in 2002	9 72.1 in 1952	9 6.19 in 2019	9 0.29 in 1926
10 78.0 in 1986	10 72.2 in 1967	10 6.00 in 2007	10 0.33 in 1963
	72.2 in 1953		
	72.2 in 1944		

Normal Temperature for October at LLDF1 = 74.9°

Normal Rainfall for October at LLDF1 = 2.88 inches

WINTER HAVEN AREA (records began in January 1941):

Warmest Octobers		Coolest Octobers		Wettest Octobers		Driest Octobers	
1	82.2 in 2019	1	70.9 in 1987	1	9.43 in 1952	1	0.02 in 2010
2	80.4 in 2018	2	71.7 in 1977	2	9.42 in 1959	2	0.16 in 2000
3	79.3 in 1941	3	72.2 in 1976	3	8.00 in 2011	3	0.17 in 2004
4	79.0 in 1985		72.2 in 1943	4	7.60 in 1950	4	0.19 in 1998
5	78.9 in 2007	5	72.6 in 2011	5	7.15 in 1956	5	0.43 in 2009
	78.9 in 1959		72.6 in 1974	6	6.90 in 1944		0.43 in 1974
7	78.7 in 2002	7	73.0 in 1958	7	6.77 in 1995	7	0.46 in 1963
8	78.5 in 1995		73.0 in 1957	8	6.47 in 2005	8	0.55 in 1989
9	78.4 in 2009	9	73.1 in 2000	9	6.13 in 2002	9	0.61 in 2015
10	78.2 in 1971		73.1 in 1944	10	5.66 in 1969		0.61 in 1942

Normal Temperature for October at GIF = 75.7°

Total Rainfall for Oct 2019 was at least 4.53 inches, but two days were missing where decent rainfall likely occurred.

Normal Rainfall for October at GIF = 2.80 inches

BARTOW (records began in June 1892):

Warmest Octobers		Coolest Octobers		Wettest Octobers		Driest Octobers	
1	79.8 in 2013	1	70.6 in 1913	1	12.55 in 1910	1	0.00 in 2000
2	79.6 in 2019	2	71.2 in 1894	2	10.22 in 1924	2	0.13 in 1940
3	79.3 in 1919	3	71.3 in 1940	3	9.10 in 1959	3	0.20 in 2013
4	79.1 in 2007		71.3 in 1892	4	8.98 in 1952		0.20 in 1963
5	78.9 in 1959	5	71.4 in 1977	5	8.75 in 2011	5	0.23 in 1998
6	78.8 in 2002	6	71.5 in 1976	6	8.43 in 1917	6	0.30 in 2010
7	78.4 in 1911	7	71.7 in 1929	7	8.18 in 1922	7	0.31 in 1974
8	78.3 in 2018	8	71.9 in 2011	8	7.90 in 1894	8	0.34 in 1973
	78.3 in 2009	9	72.0 in 1895	9	7.40 in 1938	9	0.36 in 1901
	78.3 in 1902	10	72.1 in 1924	10	7.26 in 1950	10	0.37 in 1942
			72.1 in 1920	...			
				20	5.67 in 2019	108	5.67 in 2019

Normal Temperature for October at BARF1 = 76.0°

Normal Rainfall for October at BARF1 = 2.91 inches

SARASOTA-BRADENTON AREA (records began in January 1911):

Warmest Octobers	Coollest Octobers	Wettest Octobers	Driest Octobers
1 82.7 in 2019	1 70.6 in 1976	1 12.50 in 1952	1 0.00 in 1942
2 80.4 in 2007	2 71.0 in 1943	2 12.02 in 1922	2 Trace in 2010
3 79.5 in 1959	3 71.2 in 1940	3 10.48 in 1938	3 0.02 in 1963
4 79.2 in 2016	4 71.4 in 1913	4 7.31 in 1918	4 0.04 in 1973
79.2 in 1919	5 71.5 in 1977	5 7.23 in 1957	5 0.10 in 2000
6 78.9 in 2018	6 71.6 in 1987	6 7.22 in 1924	0.10 in 1940
78.9 in 1985	7 71.7 in 1930	7 7.21 in 1921	7 0.31 in 1920
8 78.5 in 1941	8 71.8 in 1938	8 7.11 in 1990	8 0.44 in 1974
9 78.4 in 2002	71.8 in 1929	9 7.09 in 1993	9 0.45 in 1984
78.4 in 1995	10 72.0 in 1944	10 6.74 in 2007	10 0.53 in 1979
	
		36 3.38 in 2019	73 3.38 in 2019
		in 1944	in 1944

Normal Temperature for October at SRQ = 76.3°
Normal Rainfall for October at SRQ = 3.12 inches

VENICE (records began in April 1955):

Warmest Octobers	Coollest Octobers	Wettest Octobers	Driest Octobers
1 81.5 in 2019	1 70.8 in 1987	1 12.83 in 1995	1 0.00 in 2010
2 80.4 in 2009	2 71.4 in 1976	2 9.90 in 2005	2 0.08 in 1981
3 79.5 in 2002	3 72.1 in 1974	3 9.61 in 1959	3 0.09 in 1963
4 79.2 in 2018	4 72.2 in 1977	4 8.48 in 1982	4 0.18 in 2000
79.2 in 1959	5 73.0 in 1968	5 7.78 in 1986	5 0.20 in 1974
6 79.0 in 2012	6 73.3 in 1957	6 7.73 in 1967	6 0.36 in 1998
79.0 in 1985	7 73.6 in 2008	7 7.45 in 1993	7 0.56 in 1970
8 78.9 in 1998	73.6 in 2000	8 6.65 in 1983	8 0.72 in 2003
9 78.8 in 1995	9 74.1 in 1964	9 6.39 in 1969	9 0.73 in 1973
10 78.7 in 2007	10 74.4 in 1967	10 6.21 in 1958	10 0.74 in 1961
		11 5.90 in 1975	
		12 5.52 in 1957	
		13 5.16 in 1992	
		14 5.11 in 2019	

Normal Temperature for October at VNCF1 = 75.6°
Normal Rainfall for October at VNCF1 = 3.57 inches

MYAKKA RIVER STATE PARK (Temperature records began in March 1956
and Rainfall records began in Sep 1943):

Warmest Octobers		Coolest Octobers		Wettest Octobers		Driest Octobers	
1	80.9 in 2019	1	71.5 in 1987	1	10.01 in 1951	1	0.00 in 2010
2	79.9 in 2007	2	72.0 in 1992	2	9.32 in 1952		0.00 in 1974
3	79.5 in 2018	3	72.5 in 1977	3	8.59 in 1995	3	0.10 in 2000
	79.5 in 1985		72.5 in 1957	4	7.70 in 1959	4	0.30 in 1963
5	79.0 in 1991	5	72.6 in 1976	5	6.98 in 2019	5	0.44 in 1973
6	78.9 in 1998	6	72.8 in 1963	6	6.81 in 1999	6	0.61 in 1978
7	78.1 in 1975	7	73.2 in 1974	7	6.65 in 2005		0.61 in 1977
8	78.0 in 1959	8	73.5 in 1958	8	6.54 in 1994	8	0.85 in 1962
9	77.9 in 1990	9	73.6 in 1962	9	6.40 in 1943	9	1.01 in 1955
	77.9 in 1983	10	73.7 in 2011	10	6.29 in 1957	10	1.03 in 1980

Normal Temperature for October at MKCF1 = 75.9
Normal Rainfall for October at MKCF1 = 3.27 inches

WAUCHULA 2 N (records began in January 1933):

Warmest Octobers		Coolest Octobers		Wettest Octobers		Driest Octobers	
1	80.8 in 2007	1	70.6 in 1943	1	10.36 in 1975	1	0.00 in 2000
2	79.8 in 2009	2	71.2 in 2011	2	9.67 in 1952	2	Trace in 1940
3	79.4 in 1985	3	71.4 in 2000	3	9.38 in 1938	3	0.10 in 1974
4	79.3 in 2019	4	71.8 in 1987	4	8.64 in 1995	4	0.22 in 1981
	79.3 in 1941		71.8 in 1944	5	8.27 in 2011	5	0.27 in 1963
6	78.8 in 1959	6	71.9 in 2010	6	6.85 in 1950	6	0.36 in 1984
7	78.3 in 1936	7	72.0 in 1954	7	6.21 in 1953	7	0.45 in 1979
8	78.0 in 2018	8	72.2 in 1977	8	5.61 in 1999	8	0.53 in 2006
9	77.7 in 1939		72.2 in 1953	9	5.55 in 2005	9	0.57 in 1961
10	77.4 in 1990	10	72.4 in 1964		5.55 in 1945	10	0.59 in 1973
				
				22	3.90 in 2019	63	3.90 in 2019

Normal Temperature for October at WAUF1 = 76.7
Normal Rainfall for October at WAUF1 = 2.64 inches

ARCADIA (records began in January 1899):

Warmest Octobers		Coolest Octobers		Wettest Octobers		Driest Octobers	
1	80.0 in 1919	1	70.5 in 1990	1	13.98 in 1952	1	Trace in 1942
2	78.8 in 2019	2	71.2 in 1943	2	13.16 in 1910	2	0.05 in 2010
3	78.6 in 1911	3	71.5 in 2000	3	10.82 in 1953		0.05 in 2009
4	78.4 in 1959		71.5 in 1977	4	9.73 in 1924		0.05 in 1961
	78.4 in 1941		71.5 in 1976	5	8.67 in 1968	5	0.18 in 1974
6	78.1 in 2007	6	71.7 in 1938	6	8.26 in 1959		0.18 in 1940
	78.1 in 1936		71.7 in 1920	7	8.12 in 1986	7	0.21 in 2003
8	78.0 in 1985	8	71.8 in 1954	8	7.75 in 1922	8	0.25 in 2001
	78.0 in 1912	9	71.9 in 1944	9	7.64 in 1969	9	0.26 in 1981
10	77.9 in 1951	10	72.3 in 1987	10	7.62 in 1904		0.26 in 1901
			72.3 in 1940	
				42	3.17 in 2019	71	3.17 in 2019

Normal Temperature for October at ARCF1 = 74.9°

Normal Rainfall for October at ARCF1 = 2.59 inches

ARCHBOLD BIO STN (records began in January 1969):

Warmest Octobers		Coolest Octobers		Wettest Octobers		Driest Octobers	
1	79.3 in 2019	1	71.9 in 1977	1	9.24 in 2005	1	0.00 in 2010
2	79.0 in 2007	2	72.0 in 1987	2	8.40 in 1969	2	0.13 in 1984
3	77.9 in 1995		72.0 in 1976	3	7.19 in 2017	3	0.25 in 2003
	77.9 in 1985	4	72.4 in 2011	4	7.15 in 1995	4	0.40 in 1980
4	77.8 in 2018	5	72.5 in 2010	5	6.95 in 1993	5	0.47 in 2009
5	77.0 in 2016		72.5 in 2000	6	6.89 in 2011	6	0.53 in 1990
6	76.8 in 2015		72.5 in 1992	7	6.63 in 1987	7	0.56 in 1974
7	76.7 in 2009	8	72.6 in 1988	8	5.18 in 1983	8	0.68 in 1997
	76.7 in 2002	9	72.7 in 2008	9	4.68 in 2001	9	0.76 in 2018
	76.7 in 1975	10	72.9 in 1997	10	4.52 in 2015	10	0.96 in 1979
				11	4.37 in 1985		
				12	4.35 in 1989		
				13	4.14 in 2019		

Normal Temperature for October at ACHF1 = 74.6°

Normal Rainfall for October at ACHF1 = 3.18 inches

PUNTA GORDA AREA (records began in May 1914):

Warmest Octobers	Coollest Octobers	Wettest Octobers	Driest Octobers
1 80.6 in 2019	1 72.9 in 1976	1 13.99 in 1924	1 0.00 in 1942
80.6 in 1949	2 73.0 in 1938	2 12.21 in 1959	2 Trace in 1940
3 80.4 in 1951	3 73.1 in 1987	3 11.60 in 1952	3 0.01 in 2010
4 80.3 in 1959	73.1 in 1940	4 10.88 in 1995	4 0.10 in 1981
5 80.1 in 2018	5 73.3 in 1974	5 10.03 in 1951	5 0.16 in 1973
6 80.0 in 1985	73.3 in 1930	6 9.64 in 1945	6 0.26 in 1961
7 79.9 in 2007	7 73.4 in 1929	7 9.18 in 1922	7 0.45 in 2003
8 79.8 in 1919	8 73.5 in 2000	8 8.86 in 1996	8 0.56 in 1974
9 79.6 in 1960	73.5 in 1977	9 8.20 in 1953	9 0.63 in 1979
10 79.4 in 1946	10 73.7 in 1917	10 8.05 in 1932	10 0.78 in 1931
		11 7.02 in 2011	
		12 6.93 in 1975	
		13 6.60 in 2019	

Normal Temperature for October at PNTF1 = 76.9°

Normal Rainfall for October at PNTF1 = 2.93 inches

FORT MYERS AREA (records began in January 1902):

Warmest Octobers	Coollest Octobers	Wettest Octobers	Driest Octobers
1 82.9 in 2019	1 72.5 in 1903	1 19.70 in 1924	1 0.05 in 1963
2 81.7 in 1985	2 72.6 in 1976	2 12.04 in 1959	2 0.16 in 1973
3 81.1 in 2007	3 73.3 in 1913	3 11.91 in 1951	3 0.19 in 1974
4 80.4 in 1919	4 73.5 in 1953	4 11.08 in 1922	4 0.30 in 1935
5 80.0 in 1995	5 73.6 in 1957	5 11.03 in 1969	5 0.39 in 1979
80.0 in 1959	73.6 in 1908	6 10.80 in 1921	6 0.40 in 1988
7 79.8 in 1981	7 73.7 in 1943	7 10.73 in 2011	0.40 in 1981
8 79.5 in 2018	8 74.0 in 1977	8 9.26 in 1910	8 0.43 in 1977
9 79.4 in 2002	74.0 in 1920	9 8.34 in 1952	9 0.45 in 2010
79.4 in 1990	10 74.1 in 1940	10 8.17 in 2005	10 0.50 in 1942
79.4 in 1986	74.1 in 1910
79.4 in 1936		30 4.98 in 2019	89 4.98 in 2019

Normal Temperature for October at FMY = 77.9°

Normal Rainfall for October at FMY = 2.88 inches

For more local climate information, please visit our web page at <https://www.weather.gov/tampabay> and look within the "Climate and Past Weather" drop down menu above the map of the area.