



NOAA - National Weather Service

Tampa Bay Area

2525 14th Avenue SE, Ruskin, Florida 33570

813-645-2323 <https://weather.gov/tampabay>

September 2021 Climate Summary for West Central and Southwest Florida

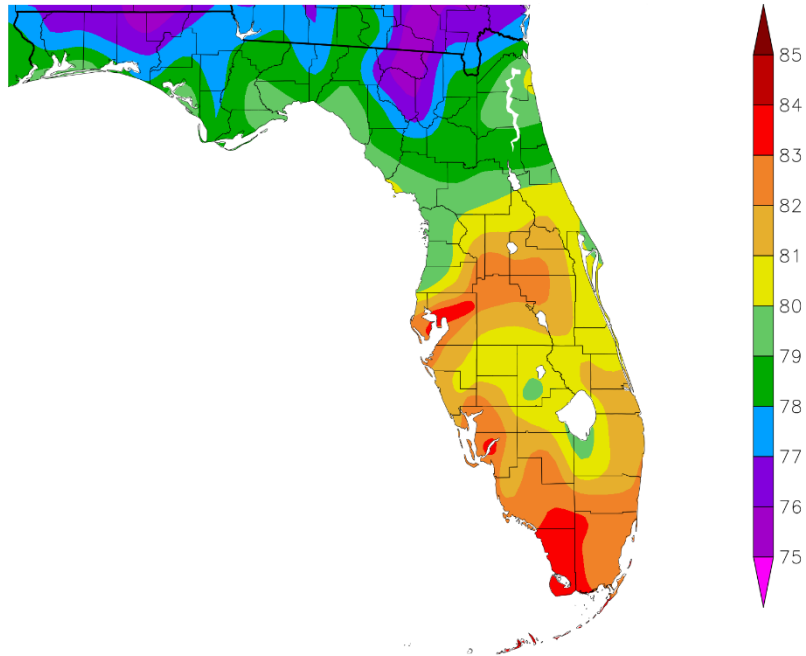
Temperatures in September 2021 averaged from about 1.5 degrees below normal to 1 degree above normal. The warmer than normal departures placed a few sites in the Top Ten Warmest for September, but with slightly cooler drier air the last week of the month many locations fell out of the Top Ten Warmest.

SEPTEMBER TEMPERATURE (°F) :

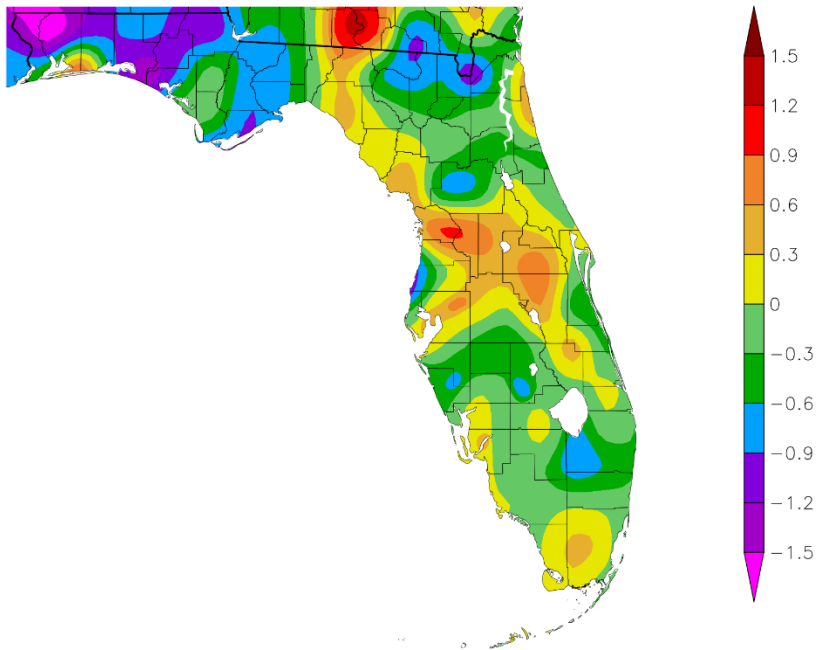
Location	September 2021 Rank	Avg Temp	Normal Sep Temp	Dep fm Normal	Records Began
Fort Myers Area	9th Warmest	83.3°	82.2°	+1.1°	Jan 1902
Tampa Area	7th Warmest (tie)	83.1°	82.7°	+0.4°	Apr 1890
St Petersburg Area	19th Warmest (tie)	83.1°	82.5°	+0.6°	Aug 1914
Plant City	5th Warmest	83.0°	82.2°	+0.8°	Sep 1892
Punta Gorda Area	18th Warmest (tie)	82.3°	82.1°	+0.2°	May 1914
Winter Haven Area	19th Warmest (tie)	82.2°	82.5°	-0.3°	Mar 1941
Lakeland Area	21st Warmest (tie)	81.9°	81.7°	+0.2°	Jan 1915
Sarasota-Bradenton Area	23rd Warmest (tie)	81.8°	82.2°	-0.4°	Jan 1911
Venice	33rd Coolest	81.2°	81.6°	-0.4°	May 1955
Bartow	59th Warmest (tie)	80.8°	80.7°	+0.1°	Jun 1892
Myakka River State Park	12th Coolest (tie)	80.5°	81.4°	-0.9°	Mar 1956
Inverness 3 SE	38th Warmest (tie)	80.0°	78.9°	+1.1°	Jul 1948
Tarpon Springs	37th Coolest (tie)	80.0°	81.3°	-1.3°	Jan 1892
Wauchula 2 N	29th Coolest (tie)	80.2°	80.8°	-0.6°	Jan 1933
Archbold Bio Stn	18th Coolest (tie)	79.9°	80.7°	-0.8°	Jan 1969
St. Leo	42nd Coolest (tie)	79.7°	79.8°	-0.1°	Apr 1895
Brooksville Area	46th Coolest (tie)	79.7°	79.8°	-0.1°	Jan 1892
Chiefland 5 ESE	29th Warmest (tie)	78.9°	78.5°	+0.4°	Jul 1956

*Last of Multiple Occurrences

Temperature (F)
9/1/2021 - 9/30/2021



Departure from Normal Temperature (F)
9/1/2021 - 9/30/2021

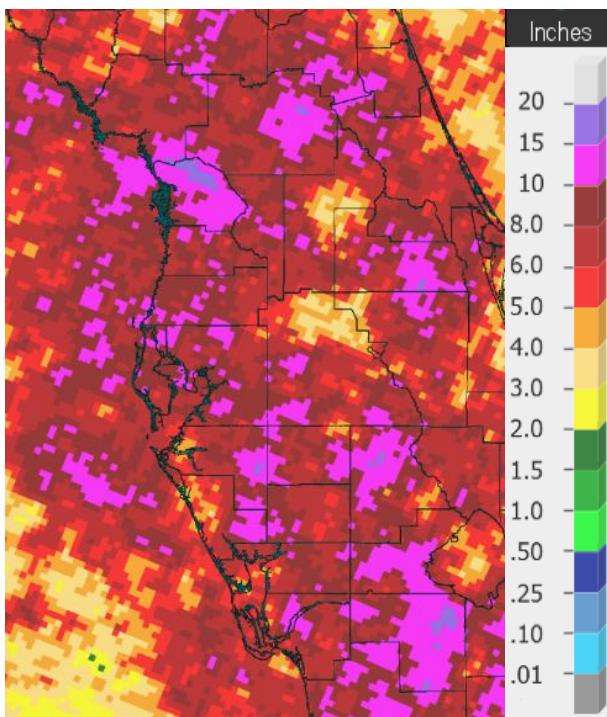


Graphics Source: NOAA Regional Climate Centers

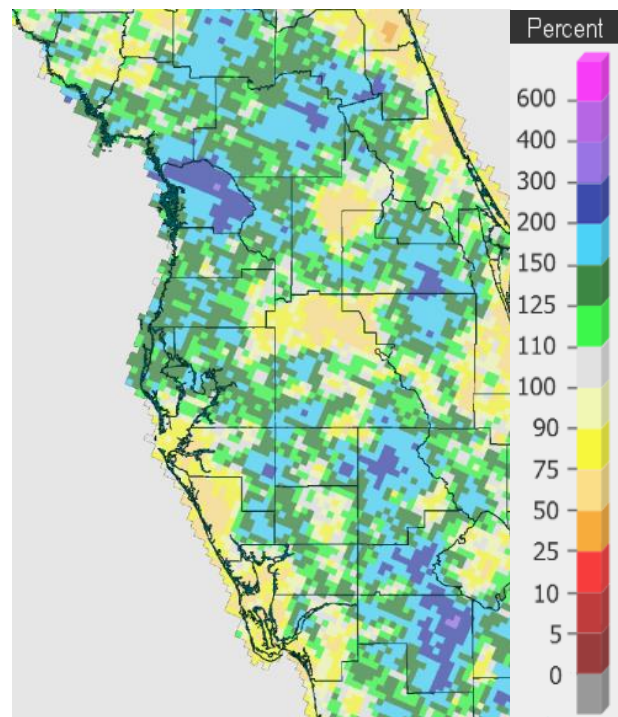
As for rainfall it was highly variable thanks to the random nature of the thunderstorms with some areas less than 75 percent of normal (light orange areas on right image below) while others were more than 200 percent of normal (dark blue/purple areas on right image below).

SEPTEMBER RAINFALL (inches):

Location	September 2021 Rank	Rain Total	Normal Sep Rain	Dep fm Normal	Records Began
Inverness 3 SE	7th Wettest	14.14	5.81	+8.33	Jul 1948
St. Leo	29th Wettest	10.01	6.63	+3.38	Apr 1895
Bartow	31st Wettest	9.83	7.31	+2.52	Jun 1892
Archbold Bio Stn	12th Wettest	9.80	7.17	+2.63	Jan 1969
Fort Myers Area	43rd Wettest	9.03	9.00	+0.03	Jan 1902
Wauchula 2 N	18th Wettest	8.58	6.32	+2.26	Jan 1933
St. Petersburg Area	41st Wettest	8.29	6.66	+1.63	Aug 1914
Tarpon Springs	52nd Wettest	7.82	7.03	+0.79	Jan 1892
Lakeland Area	71st Driest	7.46	7.62	-0.16	Jan 1915
Tampa Area	45th Wettest	7.39	6.09	+1.30	Apr 1890
Plant City	62nd Driest	6.57	6.99	-0.42	Feb 1893
Myakka River State Park	26th Driest	6.14	8.45	-2.31	Sep 1943
Punta Gorda Area	28th Driest	5.31	6.87	-1.56	May 1914
Sarasota-Bradenton Area	40th Driest	5.30	6.00	-0.70	Jan 1911
Brooksville Area	59th Driest	5.27	5.79	-0.52	Jan 1892
Venice	10th Driest	3.71	7.16	-3.45	May 1955
Winter Haven Area	22nd Driest	3.62	5.31	-1.69	Mar 1941
Chiefland 5 ESE	15th Driest	3.27	5.82	-2.55	Jul 1956



Rainfall September 2021



Percent of Normal

On the following pages are tables of the Top Ten Warmest, Coolest, Wettest, and Driest Septembers at some official NWS locations, which includes the average/total for this September where available and the 1991-2020 Normal (average) temperature and rainfall for the month of September.

CHIEFLAND 5 SE (records began in July 1956):

Warmest Sep	Coolest Sep	Wettest Sep	Driest Sep
1 83.2 in 2018	1 75.8 in 1967	1 21.39 in 2004	1 0.43 in 2019
2 81.6 in 2019	2 76.1 in 1969	2 20.12 in 1988	2 0.86 in 1972
3 81.0 in 2016	76.1 in 1956	3 16.04 in 1964	3 1.06 in 1968
81.0 in 1970	4 76.3 in 2001	4 14.77 in 1998	4 1.10 in 2008
5 80.8 in 1986	5 76.7 in 2006	5 13.65 in 1983	5 1.23 in 1978
80.8 in 1980	6 76.9 in 1985	6 10.49 in 1979	6 1.74 in 1997
7 80.5 in 2020	7 77.0 in 1994	7 10.18 in 2017	7 1.97 in 1967
80.5 in 1988	77.0 in 1966	8 10.16 in 1989	8 1.99 in 2003
9 80.4 in 1998	9 77.6 in 2008	9 10.11 in 2000	9 2.15 in 1961
80.4 in 1959	77.6 in 1982	10 10.03 in 1966	10 2.20 in 1958
...	...		11 2.23 in 1992
29 78.9 in 2021	33 78.9 in 2021		12 2.38 in 1976
78.9 in 2007	78.9 in 2007		13 3.08 in 1970
78.9 in 1993	78.9 in 1993		14 3.09 in 2005
			15 3.27 in 2021

Normal Temperature for September at CHIF1 = 78.5°
 Normal Rainfall for September at CHIF1 = 5.82 in.

INVERNESS 3 SE (records began in July 1948):

Warmest Sep	Coolest Sep	Wettest Sep	Driest Sep
1 82.3 in 1954	1 76.8 in 1994	1 16.73 in 2016	1 0.76 in 1961
2 82.2 in 1958	2 77.0 in 2001	2 16.54 in 1950	2 1.07 in 2008
3 82.0 in 1970	3 77.1 in 1997	3 16.49 in 2017	3 1.21 in 1967
4 81.9 in 2019	4 77.3 in 1956	4 16.27 in 2004	4 1.25 in 1972
5 81.8 in 2020	5 77.7 in 1976	5 15.67 in 2001	5 1.74 in 1954
81.8 in 1974	6 77.9 in 1984	6 15.24 in 1960	6 1.76 in 2012
7 81.7 in 2010	7 78.0 in 1981	7 14.14 in 2021	7 1.80 in 1990
8 81.4 in 2009	8 78.1 in 2006	8 13.15 in 1979	8 1.82 in 2019
9 81.2 in 2018	78.1 in 1983	9 12.23 in 1982	9 1.96 in 1996
81.2 in 1977	10 78.4 in 1996	10 11.92 in 1964	10 2.04 in 2005
...	...		
38 80.0 in 2021	30 80.0 in 2021		
80.0 in 1990	80.0 in 1990		
80.0 in 1971	80.0 in 1971		

Normal Temperature for September at INVF1 = 78.9°
 Normal Rainfall for September at INVF1 = 5.81 in.

BROOKSVILLE AREA (records began in January 1892):

Warmest Sep	Coolest Sep	Wettest Sep	Driest Sep
1 82.8 in 2018	1 77.2 in 2001	1 22.34 in 1950	1 0.48 in 1972
2 82.5 in 1926	2 77.5 in 1894	2 17.32 in 1979	2 0.90 in 2008
3 81.9 in 1906	3 77.6 in 1956	3 15.87 in 1894	3 1.39 in 1910
4 81.8 in 1958	4 77.7 in 1940	4 15.53 in 1912	4 1.69 in 1991
81.8 in 1925	5 77.8 in 1892	5 15.16 in 1935	5 1.74 in 1990
6 81.7 in 1930	6 77.9 in 1953	6 14.12 in 1988	6 1.90 in 1958
7 81.6 in 1911	7 78.0 in 1983	7 13.88 in 1947	7 2.02 in 1961
8 81.5 in 2019	8 78.1 in 1994	8 13.77 in 1938	8 2.07 in 2019
81.5 in 2002	78.1 in 1897	9 13.33 in 2016	9 2.09 in 1909
81.5 in 1991	10 78.2 in 2003	10 12.84 in 1960	10 2.29 in 2007
	78.2 in 1967
	78.2 in 1893	70 5.27 in 2021	59 5.27 in 2021
...	...		
66 79.7 in 2021	46 79.7 in 2021		
79.7 in 2008	79.7 in 2008		
79.7 in 1959	79.7 in 1959		
79.7 in 1923	79.7 in 1923		
79.7 in 1913	79.7 in 1913		
79.7 in 1900	79.7 in 1900		

Normal Temperature for September at BKV = 79.8°

Normal Rainfall for September at BKV = 5.79 in.

ST LEO (records began in April 1895):

Warmest Sep	Coolest Sep	Wettest Sep	Driest Sep
1 83.5 in 1925	1 76.3 in 1922	1 17.44 in 2004	1 0.75 in 1990
2 82.5 in 2002	2 77.1 in 1935	2 17.38 in 1929	2 1.17 in 1972
3 82.3 in 1900	77.1 in 1918	3 17.03 in 1950	3 1.21 in 1978
4 82.2 in 2009	4 77.4 in 1903	4 16.81 in 1912	4 1.76 in 1995
5 82.1 in 2018	5 77.9 in 1927	5 16.52 in 1960	5 1.97 in 2008
6 82.0 in 1944	77.9 in 1917	6 15.07 in 1935	6 2.05 in 1991
7 81.9 in 2008	77.9 in 1914	7 15.01 in 1933	7 2.10 in 1910
81.9 in 2007	8 78.0 in 1940	8 14.93 in 1949	8 2.23 in 2018
9 81.8 in 2005	9 78.1 in 1897	9 14.70 in 1953	9 2.24 in 1911
81.8 in 1958	10 78.3 in 1956	10 13.33 in 1982	10 2.41 in 2010
81.8 in 1951	78.3 in 1920
	78.3 in 1916	29 10.01 in 2021	98 10.01 in 2021
...	...		
83 79.7 in 2021	42 79.7 in 2021		
79.7 in 1983	79.7 in 1983		

Normal Temperature for September at STLF1 = 79.8°

Normal Rainfall for September at STLF1 = 6.63 in.

TARPON SPRINGS (records began in January 1892):

Warmest Sep	Coolest Sep	Wettest Sep	Driest Sep
1 84.2 in 2018	1 78.2 in 1894	1 18.13 in 1988	1 0.44 in 2005
2 84.0 in 1925	2 78.4 in 1967	2 15.80 in 2006	2 0.58 in 1972
3 83.5 in 1933	78.4 in 1899	3 15.54 in 1971	3 0.82 in 2008
4 83.2 in 1996	4 78.5 in 1956	4 15.39 in 1935	0.82 in 1921
5 83.0 in 1921	5 78.6 in 1940	5 15.28 in 2014	5 1.97 in 1910
6 82.9 in 1944	78.6 in 1916	6 14.27 in 1911	6 2.05 in 1967
7 82.7 in 2019	7 78.7 in 1900	7 13.21 in 1959	7 2.16 in 2007
82.7 in 1997	78.7 in 1896	8 13.12 in 1898	2.16 in 1952
9 82.6 in 1926	78.7 in 1895	9 12.79 in 1983	9 2.65 in 1919
10 82.3 in 1951	10 78.8 in 1983	10 12.70 in 1960	10 2.69 in 1978
82.3 in 1930	78.8 in 1918
...	78.8 in 1903	52 7.82 in 2021	79 7.82 in 2021
91 80.0 in 2021	...		
80.0 in 1913	37 80.0 in 2021		
	80.0 in 1913		

Normal Temperature for September at TRPF1 = 81.3°
Normal Rainfall for September at TRPF1 = 7.03 in.

TAMPA AREA (records began in April 1890):

Warmest Sep	Coolest Sep	Wettest Sep	Driest Sep
1 85.8 in 2018	1 77.5 in 1897	1 18.93 in 1912	1 0.79 in 2005
2 84.0 in 2019	2 78.4 in 1914	2 17.28 in 1894	0.79 in 1910
3 83.8 in 2016	3 78.5 in 1956	3 13.98 in 1979	3 1.05 in 1937
4 83.4 in 2017	4 78.6 in 1981	4 13.56 in 1988	4 1.13 in 2010
5 83.2 in 2010	78.6 in 1940	5 13.29 in 1929	5 1.28 in 1972
83.2 in 1925	6 78.8 in 1903	6 13.04 in 1947	6 1.46 in 2019
7 83.1 in 2021	7 78.9 in 1922	7 12.84 in 1997	7 1.58 in 1921
83.1 in 1944	8 79.1 in 1913	8 12.40 in 2006	8 1.68 in 1904
9 82.9 in 2020	79.1 in 1894	9 11.76 in 2001	9 1.90 in 1927
82.9 in 2005	10 79.2 in 2001	10 11.56 in 1953	10 2.08 in 1915
82.9 in 1958	79.2 in 1967
	79.2 in 1899	45 7.39 in 2021	88 7.39 in 2021

Normal Temperature for September at TPA = 82.7°
Normal Rainfall for September at TPA = 6.09 in.

ST PETERSBURG (records began in August 1914):

Warmest Sep	Coolest Sep	Wettest Sep	Driest Sep
1 85.7 in 2005	1 79.0 in 1956	1 25.51 in 1988	1 1.09 in 2019
2 84.8 in 1925	2 79.6 in 1953	2 18.60 in 1953	1.09 in 2008
3 84.4 in 2018	3 79.7 in 2001	3 16.39 in 2001	3 1.40 in 1967
84.4 in 2010	79.7 in 1950	4 14.40 in 1929	4 1.48 in 1972
5 84.3 in 2019	79.7 in 1940	5 14.03 in 1962	5 1.61 in 2010
84.3 in 1933	6 80.0 in 1994	6 13.39 in 1928	6 1.84 in 1990
7 83.8 in 2017	80.0 in 1914	7 13.07 in 1933	7 1.90 in 2005
83.8 in 1970	8 80.2 in 1983	8 12.63 in 1997	8 2.13 in 1915
9 83.7 in 2008	9 80.4 in 1918	9 12.46 in 2004	9 2.30 in 1944
10 83.6 in 1986	10 80.5 in 1947	10 12.36 in 1926	10 2.35 in 1925
83.6 in 1944	80.5 in 1917
83.6 in 1941		41 8.29 in 2021	68 8.29 in 2021
...			
19 83.1 in 2021			
83.1 in 2013			
83.1 in 1945			

Normal Temperature for September at SPG = 82.5°

Normal Rainfall for September at SPG = 6.66 in.

PLANT CITY (records began in September 1892):

Warmest Sep	Coolest Sep	Wettest Sep	Driest Sep
1 84.9 in 2018	1 77.7 in 1940	1 18.43 in 1894	1 0.71 in 1972
2 83.8 in 2020	2 77.9 in 1907	2 18.21 in 2004	2 0.75 in 1909
83.8 in 2019	3 78.0 in 1932	3 17.09 in 1947	3 0.92 in 2019
4 83.4 in 2017	78.0 in 1918	4 16.77 in 1998	4 0.97 in 1915
5 83.0 in 2021	5 78.4 in 1953	5 15.42 in 1988	5 1.12 in 1991
6 82.9 in 2016	78.4 in 1931	6 15.12 in 1960	6 1.26 in 1961
7 81.8 in 1958	7 78.6 in 1910	7 14.75 in 1933	7 1.27 in 1937
81.8 in 1951	78.6 in 1909	8 14.20 in 1979	8 1.50 in 1911
9 81.7 in 1974	9 78.7 in 1956	9 13.38 in 1912	9 1.64 in 1990
81.7 in 1970	78.7 in 1913	10 12.49 in 1929	10 2.15 in 1978
		...	2.15 in 1967
		60 6.57 in 2021	62 6.57 in 2021
	

Normal Temperature for September at PLCF1 = 82.2°

Normal Rainfall for September at PLCF1 = 6.99 in.

LAKELAND AREA (records began in January 1915):

Warmest Sep	Coollest Sep	Wettest Sep	Driest Sep
1 83.8 in 2018	1 78.0 in 1940	1 19.67 in 2004	1 0.31 in 1921
2 83.0 in 1987	2 78.6 in 2001	2 15.52 in 1929	2 0.81 in 1972
3 82.9 in 2016	78.6 in 1947	3 15.47 in 1998	3 0.85 in 2019
82.9 in 1989	4 78.7 in 1967	4 15.18 in 1989	4 1.26 in 1944
5 82.8 in 1998	78.7 in 1956	5 13.75 in 1933	5 1.45 in 2008
6 82.7 in 2020	6 79.0 in 1953	6 13.67 in 2001	6 1.55 in 1961
82.7 in 2019	7 79.1 in 1928	7 12.99 in 2014	7 2.42 in 1927
82.7 in 2010	79.1 in 1918	8 12.33 in 1979	8 2.57 in 1925
82.7 in 1990	9 79.2 in 2006	9 12.16 in 2017	9 2.59 in 1937
10 82.6 in 1986	79.2 in 1950	10 11.68 in 1947	10 2.68 in 1991
...	
21 81.9 in 2021		36 7.46 in 2021	71 7.46 in 2021
81.9 in 2008			

Normal Temperature for September at LLDF1 = 81.7°

Normal Rainfall for September at LLDF1 = 7.62 in.

WINTER HAVEN AREA (records began in March 1941):

Warmest Sep	Coollest Sep	Wettest Sep	Driest Sep
1 85.0 in 2018	1 79.2 in 1976	1 17.26 in 1960	1 1.08 in 2008
2 84.3 in 2019	79.2 in 1968	2 14.79 in 2001	2 1.10 in 1972
3 84.0 in 1989	79.2 in 1956	3 13.46 in 1948	3 1.22 in 1961
4 83.2 in 1991	4 79.4 in 1981	4 12.84 in 2014	4 1.61 in 2005
5 83.1 in 2020	79.4 in 1962	5 12.83 in 1947	5 1.96 in 2015
6 82.9 in 2016	6 79.6 in 2001	6 12.47 in 1979	1.96 in 1952
7 82.6 in 2002	7 79.7 in 1983	7 11.32 in 1987	7 2.16 in 1990
82.6 in 1951	79.7 in 1959	8 10.54 in 2020	8 2.33 in 2009
9 82.5 in 2010	9 79.8 in 1967	9 10.51 in 1998	9 2.35 in 2006
82.5 in 2007	79.8 in 1964	10.51 in 1920	10 2.47 in 1944
82.5 in 1995	79.8 in 1947		...
...			22 3.62 in 2021
19 82.2 in 2021			
82.2 in 2015			

Normal Temperature for September at GIF = 82.5°

Normal Rainfall for September at GIF = 5.31 in.

BARTOW (records began in June 1892):

Warmest Sep	Coollest Sep	Wettest Sep	Driest Sep
1 83.5 in 2014	1 77.0 in 1894	1 17.24 in 2004	1 1.04 in 1972
2 83.3 in 1925	2 77.7 in 1913	2 16.91 in 1894	2 1.73 in 2005
3 83.2 in 1988	3 77.8 in 1914	3 16.61 in 1928	3 1.76 in 1904
4 82.8 in 2018	4 78.1 in 1918	4 15.96 in 1998	4 2.35 in 1942
82.8 in 2002	5 78.5 in 1940	5 15.77 in 1933	5 2.41 in 1961
6 82.7 in 1987	78.5 in 1916	6 15.59 in 1960	6 2.47 in 1937
7 82.6 in 1951	7 78.6 in 1895	7 15.06 in 1979	7 2.51 in 1991
82.6 in 1949	78.6 in 1893	8 14.64 in 1982	8 2.52 in 1910
9 82.5 in 1958	9 78.9 in 1922	9 14.25 in 1947	9 2.57 in 1990
82.5 in 1944	10 79.0 in 1975	10 13.72 in 1908	10 2.87 in 2019
	79.0 in 1967
	79.0 in 1897	31 9.83 in 2021	95 9.83 in 2021
	79.0 in 1892		
...	...		
59 80.8 in 2021	55 80.8 in 2021		
80.8 in 1998	80.8 in 1998		
80.8 in 1985	80.8 in 1985		
80.8 in 1969	80.8 in 1969		
80.8 in 1966	80.8 in 1966		
80.8 in 1950	80.8 in 1950		
80.8 in 1943	80.8 in 1943		

Normal Temperature for September at BARF1 = 80.7°

Normal Rainfall for September at BARF1 = 7.31 in.

SARASOTA-BRADENTON AREA (records began in January 1911):

Warmest Sep	Coollest Sep	Wettest Sep	Driest Sep
1 84.8 in 2019	1 78.2 in 1927	1 21.16 in 1962	1 1.07 in 2005
2 83.9 in 2016	2 78.4 in 1931	2 19.14 in 1953	2 1.17 in 2010
3 83.2 in 2020	3 78.6 in 1916	3 17.31 in 1928	3 1.94 in 2012
4 82.7 in 2007	4 78.7 in 1940	4 16.92 in 1929	4 1.99 in 2019
5 82.6 in 2018	5 78.9 in 1956	5 16.65 in 1912	5 2.02 in 1945
6 82.5 in 1951	6 79.0 in 2001	6 15.86 in 1926	6 2.27 in 1921
82.5 in 1925	79.0 in 1984	7 15.65 in 1960	7 2.33 in 1984
8 82.3 in 2010	79.0 in 1922	8 15.57 in 1988	8 2.37 in 1944
82.3 in 2009	9 79.1 in 1976	9 14.50 in 1979	9 2.41 in 1972
82.3 in 2005	79.1 in 1935	10 13.40 in 1989	10 2.74 in 1991
82.3 in 1989	
...		72 5.30 in 2021	40 5.30 in 2021
23 81.8 in 2021			
81.8 in 2012			

Normal Temperature for September at SRQ = 82.2°

Normal Rainfall for September at SRQ = 6.00 in.

VENICE (records began in May 1955):

Warmest Sep	Coollest Sep	Wettest Sep	Driest Sep
1 85.4 in 1989	1 78.1 in 1968	1 16.20 in 1960	1 1.39 in 2019
2 84.5 in 2009	2 78.7 in 1956	2 14.77 in 1962	2 1.72 in 1961
3 84.1 in 2010	3 78.9 in 1976	3 14.23 in 1983	3 1.84 in 1981
4 83.6 in 2011	4 79.8 in 1967	4 13.10 in 2013	4 1.93 in 2005
5 83.4 in 2019	5 79.9 in 2001	5 12.49 in 2003	5 2.22 in 1993
6 83.2 in 2012	79.9 in 1984	6 12.31 in 1968	6 2.61 in 1986
7 83.1 in 2018	7 80.1 in 1987	7 12.22 in 2014	7 3.25 in 2011
8 83.0 in 1998	8 80.2 in 1961	8 11.96 in 1994	8 3.43 in 1958
9 82.9 in 2002	80.2 in 1960	9 11.95 in 1995	9 3.69 in 1965
10 82.5 in 1995	10 80.3 in 1985	10 11.44 in 1975	10 3.71 in 2021
	80.3 in 1983		
...	...		
30 81.2 in 2021	33 81.2 in 2021		

Normal Temperature for September at VNCF1 = 81.6°

Normal Rainfall for September at VNCF1 = 7.16 in.

MYAKKA RIVER STATE PARK (Temperature records began in March 1956
and Rainfall records began in Sep 1943):

Warmest Sep	Coollest Sep	Wettest Sep	Driest Sep
1 83.8 in 2018	1 78.9 in 2001	1 22.49 in 1962	1 1.48 in 2005
2 82.8 in 2016	78.9 in 1959	2 21.08 in 1979	2 1.66 in 2019
3 82.6 in 2019	3 79.4 in 1962	3 18.10 in 2001	3 2.29 in 1972
82.6 in 2009	4 79.7 in 1976	4 14.65 in 2014	4 2.36 in 1961
5 82.5 in 2010	79.7 in 1963	5 14.04 in 1960	5 2.40 in 1986
82.5 in 1991	6 80.1 in 1994	6 12.82 in 1957	6 2.65 in 2008
7 82.3 in 2015	80.1 in 1971	7 12.47 in 2018	7 2.74 in 1990
82.3 in 1998	80.1 in 1968	8 12.42 in 1995	8 3.76 in 1991
82.3 in 1990	9 80.3 in 1984	9 11.98 in 1982	9 4.19 in 1984
10 82.2 in 2002	80.3 in 1972	10 11.96 in 1994	10 4.24 in 1966
82.2 in 1996	80.3 in 1969
82.2 in 1993	12 80.5 in 2021	52 6.14 in 2021	26 6.14 in 2021
	80.5 in 1960		

Normal Temperature for September at MKCF1 = 81.4°

Normal Rainfall for September at MKCF1 = 8.45 in.

WAUCHULA 2 N (records began in January 1933):

Warmest Sep	Coolest Sep	Wettest Sep	Driest Sep
1 84.5 in 2009	1 78.1 in 1956	1 18.06 in 1947	1 1.19 in 1961
2 83.4 in 2008	2 78.4 in 2001	2 14.38 in 1953	2 1.44 in 1972
3 82.6 in 2018	78.4 in 1953	3 13.91 in 1948	3 1.54 in 2019
4 82.5 in 2007	4 78.7 in 1940	4 13.83 in 1960	4 1.61 in 1933
5 82.4 in 1989	5 78.8 in 2012	5 11.77 in 2017	5 1.91 in 2008
6 82.2 in 1988	6 78.9 in 2013	6 11.56 in 1979	6 2.00 in 1980
82.2 in 1933	7 79.1 in 1984	7 11.41 in 1962	7 2.21 in 1991
8 82.0 in 2017	8 79.2 in 1982	8 11.33 in 2015	8 2.70 in 1978
82.0 in 1974	79.2 in 1947	9 10.95 in 1982	9 3.26 in 1976
10 81.9 in 2016	10 79.3 in 1981	10 10.47 in 2000	10 3.35 in 1987
	79.3 in 1968	...	
...	...	18 8.58 in 2021	
53 80.2 in 2021	29 80.2 in 2021		
80.2 in 1954	80.2 in 1954		
80.2 in 1948	80.2 in 1948		
80.2 in 1946	80.2 in 1946		

Normal Temperature for September at WAUF1 = 80.8°

Normal Rainfall for September at WAUF1 = 6.32 in.

ARCADIA (records began in November 1899):

Warmest Sep	Coolest Sep	Wettest Sep	Driest Sep
1 82.3 in 2018	1 75.7 in 1990	1 17.71 in 1940	1 1.40 in 1961
2 81.8 in 1905	2 77.9 in 1971	2 17.05 in 1960	2 2.02 in 1925
3 81.7 in 1974	3 78.5 in 1976	3 16.10 in 2017	3 2.05 in 1909
81.7 in 1933	4 78.7 in 1985	4 15.78 in 2020	4 2.24 in 1980
81.7 in 1925	78.7 in 1910	5 15.67 in 1908	5 2.28 in 2018
81.7 in 1902	6 78.8 in 1984	6 15.66 in 1930	6 2.38 in 2019
7 81.6 in 1912	78.8 in 1968	7 14.81 in 1929	7 2.39 in 1972
8 81.5 in 2020	8 78.9 in 1969	8 14.67 in 2001	8 2.44 in 1911
81.5 in 2011	78.9 in 1909	9 13.74 in 1979	9 2.60 in 1990
81.5 in 1991	10 79.0 in 2001	10 13.30 in 2003	10 2.75 in 1932
81.5 in 1944	79.0 in 1940	13.30 in 1962	
81.5 in 1900			

Average Temperature for September 2021 = Not Available Yet

Normal Temperature for September at ARCF1 = 80.1°

Total Rainfall for September 2021 = Not Available Yet

Normal Rainfall for September at ARCF1 = 7.77 in.

ARCHBOLD BIO STN (records began in January 1969):

Warmest Sep	Coollest Sep	Wettest Sep	Driest Sep
1 82.3 in 2016	1 78.3 in 1994	1 14.54 in 2017	1 0.70 in 1996
2 82.0 in 2017	2 78.5 in 2001	2 14.15 in 1979	2 2.04 in 2019
3 81.8 in 2015	78.5 in 1984	3 12.78 in 2016	3 2.37 in 1983
4 81.7 in 2018	4 78.6 in 1982	4 12.54 in 2004	4 2.41 in 1988
5 81.3 in 2020	5 79.0 in 1976	5 11.55 in 2001	5 2.92 in 1980
6 81.2 in 1974	6 79.3 in 2012	6 11.47 in 2014	6 3.22 in 2008
7 81.1 in 2019	79.3 in 1999	7 10.69 in 2012	7 3.30 in 2005
81.1 in 2002	79.3 in 1997	8 10.65 in 1982	8 3.58 in 2011
9 80.9 in 2010	79.3 in 1985	9 9.97 in 1973	9 3.67 in 2018
80.9 in 2009	79.3 in 1981	10 9.92 in 1987	10 3.79 in 2006
80.9 in 1989	79.3 in 1971	11 9.87 in 1977	
...	...	12 9.80 in 2021	
33 79.9 in 2021	18 79.9 in 2021		
79.9 in 2008	79.9 in 2008		
79.9 in 1980	79.9 in 1980		
79.9 in 1977	79.9 in 1977		

Normal Temperature for September at ACHF1 = 80.7°

Normal Rainfall for September at ACHF1 = 7.17 in.

PUNTA GORDA AREA (records began in May 1914):

Warmest Sep	Coollest Sep	Wettest Sep	Driest Sep
1 84.6 in 2018	1 78.5 in 1940	1 17.09 in 1959	1 0.93 in 2019
2 84.2 in 1951	2 78.8 in 2001	2 16.54 in 1929	2 1.23 in 1978
3 83.0 in 1988	3 79.1 in 1969	3 16.47 in 1962	3 2.94 in 1952
4 82.9 in 2009	4 79.2 in 1922	4 16.13 in 1947	4 3.33 in 1990
5 82.8 in 2020	5 79.4 in 1917	5 14.86 in 1935	5 3.36 in 1991
82.8 in 1986	79.4 in 1914	6 14.17 in 2001	6 3.44 in 1987
7 82.7 in 2017	7 79.5 in 1956	7 14.15 in 1928	7 3.71 in 1972
82.7 in 1933	79.5 in 1929	8 14.03 in 1979	8 3.74 in 1986
9 82.6 in 2011	9 79.9 in 1938	9 13.77 in 1926	9 3.76 in 1965
82.6 in 1989	79.9 in 1928	10 13.67 in 2003	10 3.81 in 1927
...
18 82.3 in 2021		79 5.31 in 2021	28 5.31 in 2021
82.3 in 2019		5.31 in 1998	5.31 in 1998
82.3 in 1995			
82.3 in 1992			
82.3 in 1977			
82.3 in 1949			
82.3 in 1945			

Normal Temperature for September at PGD = 82.1°

Normal Rainfall for September at PGD = 6.87 in.

FORT MYERS AREA (records began in January 1902):

Warmest Sep	Coollest Sep	Wettest Sep	Driest Sep
1 84.7 in 1980	1 78.5 in 1917	1 17.35 in 1922	1 1.93 in 1988
2 84.0 in 1996	2 78.7 in 1908	2 17.21 in 2003	2 2.33 in 1972
3 83.7 in 1988	78.7 in 1903	3 16.60 in 1969	3 2.80 in 1961
4 83.6 in 2019	4 78.9 in 1922	4 16.32 in 1947	4 2.86 in 2019
83.6 in 1997	78.9 in 1909	5 15.58 in 1953	5 3.04 in 1937
6 83.5 in 1986	6 79.0 in 1913	6 15.44 in 1929	6 3.07 in 1904
83.5 in 1979	7 79.1 in 1902	7 14.86 in 2008	7 3.24 in 1925
8 83.4 in 1990	8 79.2 in 1910	8 14.54 in 1962	8 3.39 in 1906
9 83.3 in 2021	9 79.3 in 1976	9 14.49 in 1935	9 3.48 in 1954
10 83.1 in 2018	79.3 in 1918	10 14.14 in 2001	10 3.56 in 1944
83.1 in 2011	79.3 in 1904		3.56 in 1936
83.1 in 2010	
83.1 in 1997		43 9.03 in 2021	76 9.03 in 2021
83.1 in 1987			
83.1 in 1985			
83.1 in 1981			

Normal Temperature for September at FMY = 82.2°
 Normal Rainfall for September at FMY = 9.00 in.

For more Climate information visit our web site at the following link:
<http://www.weather.gov/tampabay> and then go to the Climate and Past
 Weather drop down menu above the graphical forecast images.