



NOAA - National Weather Service

Tampa Bay Area

2525 14th Avenue SE, Ruskin, Florida 33570

813-645-2323 <https://weather.gov/tampabay>

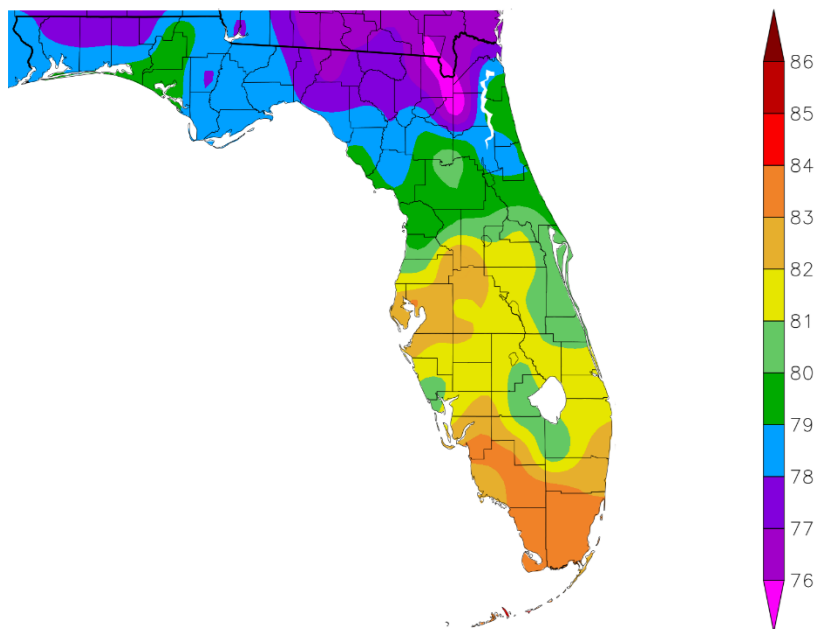
September 2025 Weather Summary for West Central and Southwest Florida

Temperatures this September averaged from about 1 degree below normal to 1 degree above normal with a few of the official sites on track ending up in the Top Ten Warmest for September.

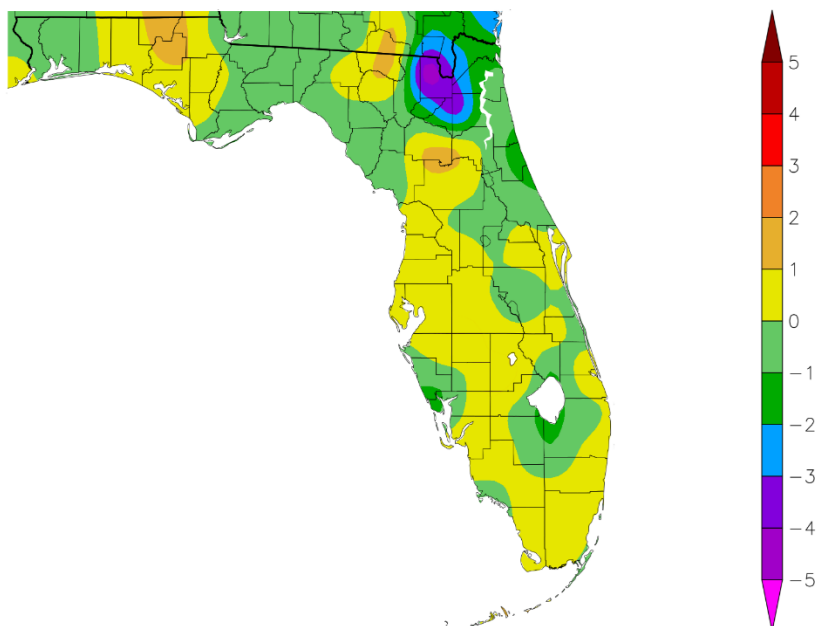
SEPTEMBER TEMPERATURE (°F) :

Location	September 2025		Normal Sep Temp	Dep fm Normal	Records Began
	Rank	Avg Temp			
Tampa Area	6th Warmest(tie)	83.4°	82.7°	+0.7°	Apr 1890
Fort Myers Area	29th Warmest(tie)	82.6°	82.2°	+0.4°	Jan 1902
Winter Haven Area	64th Coolest(tie)	82.4°	82.5°	-0.1°	Mar 1941
Plant City	9th Warmest	82.3°	82.2°	+0.1°	Sep 1892
St Petersburg Area	63rd Coolest(tie)	82.3°	82.5°	-0.2°	Aug 1914
Sarasota-Bradenton Area	91st Coolest(tie)	82.0°	82.2°	-0.2°	Jan 1911
Lakeland Area	27th Warmest	81.7°	81.7°	0.0°	Jan 1915
Punta Gorda Area	57th Coolest(tie)	81.5°	82.1°	-0.6°	May 1914
Bartow	50th Warmest(tie)	81.1°	80.7°	+0.4°	Jun 1892
Tarpon Springs	70th Coolest(tie)	80.9°	81.3°	-0.4°	Jan 1892
Wauchula	35th Warmest(tie)	80.8°	80.8°	0.0°	Jan 1933
Venice	12th Coolest(tie)	80.4°	81.6°	-1.2°	May 1955
Brooksville Area	44th Warmest(tie)	80.3°	79.8°	+0.5°	Jan 1892
St. Leo	78th Warmest(tie)	79.9°	79.8°	+0.1°	Apr 1895
Inverness 3 SE	49th Warmest(tie)	79.6°	78.9°	+0.7°	Jul 1948
Chiefland 5 ESE	17th Coolest	78.0°	78.5°	-0.5°	Jul 1956

Temperature (F)
9/1/2025 – 9/30/2025



Departure from Normal Temperature (F)
9/1/2025 – 9/30/2025

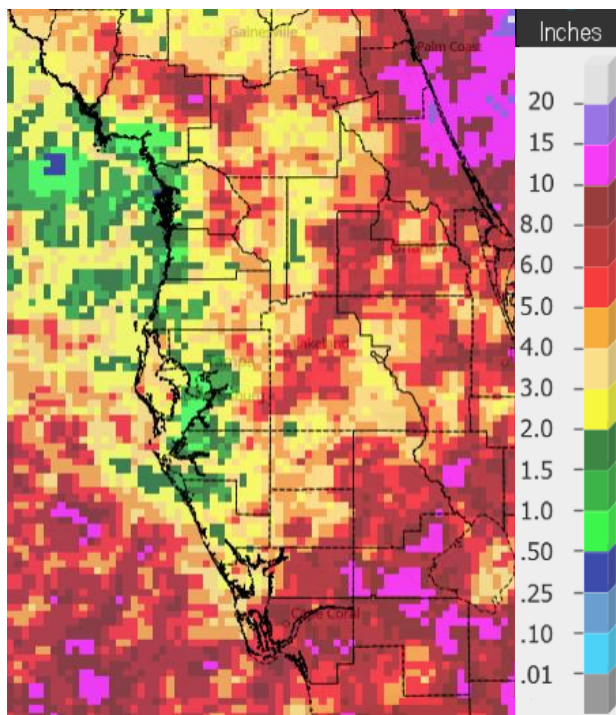


Graphics Source: NOAA Regional Climate Centers

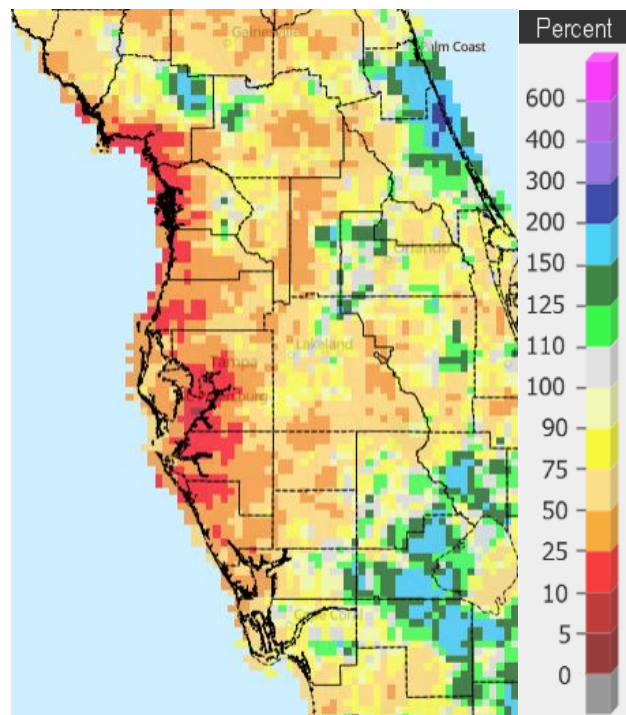
As for rainfall, a few small areas saw above normal amounts (green/blue areas on right image below the table), but most of the region was below normal (orange/red areas on right image below the table). These low rainfall amounts put some locations in the Top Ten Driest for September, with Tampa setting a new record for least amount of rain during any September since records began in 1890.

SEPTEMBER RAINFALL (inches):

Location	September 2025 Rank	Rain Total	Normal Sep Rain	Dep fm Normal	Records Began
Plant City	49th Wettest	7.34	6.99	+0.35	Sep 1892
Fort Myers Area	44th Driest	6.56	9.00	-2.44	Jan 1902
Chiefland 5 ESE	33rd Wettest	5.85	5.82	+0.03	Jul 1956
Wauchula	31st Driest	5.40	6.32	-0.92	Jan 1933
Punta Gorda Area	32nd Driest	5.38	6.87	-1.49	May 1914
Bartow	50th Driest(tie)	5.08	7.31	-2.23	Jun 1892
St. Leo	50th Driest(tie)	4.37	6.63	-2.26	Apr 1895
Lakeland Area	21st Driest	3.55	7.62	-4.07	Jan 1915
Inverness 3 SE	18th Driest	3.12	5.81	-2.69	Jul 1948
Winter Haven Area	12th Driest	3.00	5.31	-2.31	Mar 1941
Venice	5th Driest	2.21	7.16	-4.95	May 1955
St. Petersburg Area	6th Driest	1.80	6.66	-4.86	Aug 1914
Brooksville Area	5th Driest(tie)	1.74	5.79	-4.05	Jan 1892
Sarasota-Bradenton Area	3rd Driest	1.66	6.00	-4.34	Jan 1911
Tarpon Springs	5th Driest	1.29	7.03	-5.74	Jan 1892
Tampa Area	1st Driest	0.70	6.09	-5.39	Apr 1890



Rainfall September 2025



Percent of Normal

On the following pages are tables of the Top Ten Warmest, Coolest, Wettest, and Driest Septembers at some official NWS locations, which includes the average/total for this September where available and the 1991-2020 Normal (average) temperature and rainfall for the month of September.

CHIEFLAND 5 ESE (records began in July 1956):

Warmest Sep	Coolest Sep	Wettest Sep	Driest Sep
1 83.2 in 2018	1 75.8 in 1967	1 21.39 in 2004	1 0.43 in 2019
2 81.6 in 2019	2 76.1 in 1969	2 20.12 in 1988	2 0.86 in 1972
3 81.0 in 2016	76.1 in 1956	3 16.04 in 1964	3 1.06 in 1968
81.0 in 1970	4 76.3 in 2001	4 14.77 in 1998	4 1.10 in 2008
5 80.8 in 1986	5 76.7 in 2006	5 13.65 in 1983	5 1.23 in 1978
80.8 in 1980	6 76.9 in 1985	6 10.49 in 1979	6 1.74 in 1997
7 80.5 in 2020	7 77.0 in 1994	7 10.18 in 2017	7 1.97 in 1967
80.5 in 1988	77.0 in 1966	8 10.16 in 1989	8 1.99 in 2003
9 80.4 in 1998	9 77.6 in 2008	9 10.11 in 2000	9 2.15 in 1961
80.4 in 1959	77.6 in 1982	10 10.03 in 1966	10 2.20 in 1958

	17 78.0 in 2025	33 5.85 in 2025	38 5.85 in 2025

Normal Temperature for September at CHIF1 = 78.5°

Normal Rainfall for September at CHIF1 = 5.82 in.

INVERNESS 3 SE (records began in July 1948):

Warmest Sep	Coolest Sep	Wettest Sep	Driest Sep
1 82.3 in 1954	1 76.8 in 1994	1 16.73 in 2016	1 0.76 in 1961
2 82.2 in 1958	2 77.0 in 2001	2 16.54 in 1950	2 1.07 in 2008
3 82.1 in 2024	3 77.1 in 1997	3 16.49 in 2017	3 1.21 in 1967
4 82.0 in 1970	4 77.3 in 1956	4 16.27 in 2004	4 1.25 in 1972
5 81.9 in 2019	5 77.7 in 1976	5 15.67 in 2001	5 1.74 in 1954
6 81.8 in 2020	6 77.9 in 1984	6 15.24 in 1960	6 1.76 in 2012
81.8 in 1974	7 78.0 in 1981	7 14.14 in 2021	7 1.80 in 1990
8 81.7 in 2010	8 78.1 in 2006	8 13.15 in 1979	8 1.82 in 2019
9 81.4 in 2009	78.1 in 1983	9 12.23 in 1982	9 1.96 in 1996
10 81.2 in 2018	10 78.4 in 1996	10 11.92 in 1964	10 2.04 in 2005
81.2 in 1977			...
...	...		18 3.12 in 2025
49 79.6 in 2025	23 79.6 in 2025		
79.6 in 1986	79.6 in 1986		

Normal Temperature for September at INV1 = 78.9°

Normal Rainfall for September at INV1 = 5.81 in.

BROOKSVILLE AREA (records began in January 1892):

Warmest Sep	Coollest Sep	Wettest Sep	Driest Sep
1 82.8 in 2018	1 77.2 in 2001	1 22.34 in 1950	1 0.48 in 1972
2 82.5 in 1926	2 77.5 in 1894	2 17.32 in 1979	2 0.90 in 2008
3 82.0 in 2024	3 77.6 in 1956	3 15.87 in 1894	3 1.39 in 1910
4 81.9 in 1906	4 77.7 in 1940	4 15.53 in 1912	4 1.69 in 1991
5 81.8 in 1958	5 77.8 in 1892	5 15.16 in 1935	5 1.74 in 2025
81.8 in 1925	6 77.9 in 1953	6 14.12 in 1988	1.74 in 1990
7 81.7 in 1930	7 78.0 in 1983	7 13.88 in 1947	7 1.90 in 1958
8 81.6 in 1911	8 78.1 in 1994	8 13.77 in 1938	8 2.02 in 1961
9 81.5 in 2019	78.1 in 1897	9 13.33 in 2016	9 2.07 in 2019
81.5 in 2002	10 78.2 in 2003	10 12.84 in 1960	10 2.09 in 1909
81.5 in 1991	78.2 in 1967		
	78.2 in 1893		
...	...		
44 80.3 in 2025	73 80.3 in 2025		
80.3 in 1995	80.3 in 1995		
80.3 in 1945	80.3 in 1945		
80.3 in 1941	80.3 in 1941		
80.3 in 1931	80.3 in 1931		

Normal Temperature for September at BKV = 79.8°

Normal Rainfall for September at BKV = 5.79 in.

ST LEO (records began in April 1895):

Warmest Sep	Coollest Sep	Wettest Sep	Driest Sep
1 83.5 in 1925	1 76.3 in 1922	1 17.44 in 2004	1 0.75 in 1990
2 82.5 in 2002	2 77.1 in 1935	2 17.38 in 1929	2 1.17 in 1972
3 82.3 in 1900	77.1 in 1918	3 17.03 in 1950	3 1.21 in 1978
4 82.2 in 2009	4 77.4 in 1903	4 16.81 in 1912	4 1.76 in 1995
5 82.1 in 2018	5 77.9 in 1927	5 16.52 in 1960	5 1.97 in 2008
6 82.0 in 1944	77.9 in 1917	6 15.07 in 1935	6 2.05 in 1991
7 81.9 in 2024	77.9 in 1914	7 15.01 in 1933	7 2.10 in 1910
81.9 in 2008	8 78.0 in 1940	8 14.93 in 1949	8 2.11 in 2023
81.9 in 2007	9 78.1 in 1897	9 14.70 in 1953	9 2.23 in 2018
10 81.8 in 2005	10 78.3 in 1956	10 13.33 in 1982	10 2.24 in 1911
81.8 in 1958	78.3 in 1920
81.8 in 1951		80 4.37 in 2025	50 4.37 in 2025
...	...	4.37 in 1957	4.37 in 1957
78 79.9 in 2025	51 79.9 in 2025		
79.9 in 1896	79.9 in 1896		

Normal Temperature for September at STLF1 = 79.8°

Normal Rainfall for September at STLF1 = 6.63 in.

TARPON SPRINGS (records began in January 1892):

Warmest Sep	Cooltest Sep	Wettest Sep	Driest Sep
1 84.2 in 2018	1 78.2 in 1894	1 18.13 in 1988	1 0.44 in 2005
2 84.0 in 1925	2 78.4 in 1967	2 15.80 in 2006	2 0.58 in 1972
3 83.5 in 1933	78.4 in 1899	3 15.54 in 1971	3 0.82 in 2008
4 83.3 in 2024	4 78.5 in 1956	4 15.39 in 1935	0.82 in 1921
5 83.2 in 1996	5 78.6 in 1940	5 15.28 in 2014	5 1.29 in 2025
6 83.0 in 1921	78.6 in 1916	6 14.27 in 1911	6 1.97 in 1910
7 82.9 in 1944	7 78.7 in 1900	7 13.21 in 1959	7 2.05 in 1967
8 82.7 in 2019	78.7 in 1896	8 13.12 in 1898	8 2.16 in 2007
82.7 in 1997	78.7 in 1895	9 12.79 in 1983	2.16 in 1952
10 82.6 in 1926	10 78.8 in 1983	10 12.70 in 1960	10 2.21 in 2023
	78.8 in 1918		
	78.8 in 1903		
...	...		
57 80.9 in 2025	70 80.9 in 2025		
80.9 in 2023	80.9 in 2023		
80.9 in 1970	80.9 in 1970		
80.9 in 1955	80.9 in 1955		
80.9 in 1937	80.9 in 1937		
80.9 in 1929	80.9 in 1929		
80.9 in 1928	80.9 in 1928		

Normal Temperature for September at TRPF1 = 81.3°

Normal Rainfall for September at TRPF1 = 7.03 in.

TAMPA AREA (records began in April 1890):

Warmest Sep	Cooltest Sep	Wettest Sep	Driest Sep
1 85.8 in 2018	1 77.5 in 1897	1 18.93 in 1912	1 0.70 in 2025
2 84.0 in 2024	2 78.4 in 1914	2 17.28 in 1894	2 0.79 in 2008
84.0 in 2019	3 78.5 in 1956	3 13.98 in 1979	0.79 in 1910
4 83.8 in 2023	4 78.6 in 1981	4 13.56 in 1988	4 1.05 in 1937
83.8 in 2016	78.6 in 1940	5 13.35 in 2024	5 1.13 in 2010
6 83.4 in 2025	6 78.8 in 1903	6 13.29 in 1929	6 1.28 in 1972
83.4 in 2017	7 78.9 in 1922	7 13.04 in 1947	7 1.46 in 2019
8 83.2 in 2010	8 79.1 in 1913	8 12.84 in 1997	8 1.58 in 1921
83.2 in 1925	79.1 in 1894	9 12.40 in 2006	9 1.68 in 1904
10 83.1 in 2021	10 79.2 in 2001	10 12.29 in 2022	10 1.90 in 1927
83.1 in 1944	79.2 in 1967		
	79.2 in 1899		

Normal Temperature for September at TPA = 82.7°

Normal Rainfall for September at TPA = 6.09 in.

ST PETERSBURG AREA (records began in August 1914):

Warmest Sep	Coolest Sep	Wettest Sep	Driest Sep
1 85.7 in 2024	1 79.0 in 1956	1 25.51 in 1988	1 1.09 in 2019
85.7 in 2005	2 79.6 in 1953	2 18.60 in 1953	1.09 in 2008
3 84.8 in 1925	3 79.7 in 2001	3 16.39 in 2001	3 1.40 in 1967
4 84.4 in 2018	79.7 in 1950	4 14.40 in 1929	4 1.48 in 1972
84.4 in 2010	79.7 in 1940	5 14.03 in 1962	5 1.61 in 2010
6 84.3 in 2019	6 80.0 in 1994	6 13.39 in 1928	6 1.80 in 2025
84.3 in 1933	80.0 in 1914	7 13.16 in 2022	7 1.84 in 1990
8 83.8 in 2017	8 80.2 in 1983	8 13.07 in 1933	8 1.90 in 2005
83.8 in 1970	9 80.4 in 1918	9 12.63 in 1997	9 2.13 in 1915
10 83.7 in 2023	10 80.5 in 1947	10 12.46 in 2004	10 2.30 in 1944
83.7 in 2008	80.5 in 1917		
...	...		
47 82.3 in 2025	63 82.3 in 2025		
82.3 in 1951	82.3 in 1951		

Normal Temperature for September at SPG = 82.5°

Normal Rainfall for September at SPG = 6.66 in.

PLANT CITY (records began in September 1892):

Warmest Sep	Coolest Sep	Wettest Sep	Driest Sep
1 86.2 in 2024	1 77.7 in 1940	1 18.43 in 1894	1 0.71 in 1972
2 84.9 in 2018	2 77.9 in 1907	2 18.21 in 2004	2 0.75 in 1909
3 84.0 in 2023	3 78.0 in 1932	3 17.09 in 1947	3 0.92 in 2019
4 83.8 in 2020	78.0 in 1918	4 16.77 in 1998	4 0.97 in 1915
83.8 in 2019	5 78.4 in 1953	5 15.42 in 1988	5 1.12 in 1991
6 83.1 in 2022	78.4 in 1931	6 15.18 in 2022	6 1.26 in 1961
7 83.0 in 2021	7 78.6 in 1910	7 15.12 in 1960	7 1.27 in 1937
8 82.9 in 2016	78.6 in 1909	8 14.75 in 1933	8 1.47 in 2023
9 82.3 in 2025	9 78.7 in 1956	9 14.20 in 1979	9 1.50 in 1911
10 81.8 in 1958	78.7 in 1913	10 13.38 in 1912	10 1.64 in 1990
81.8 in 1951	
		49 7.34 in 2025	78 7.34 in 2025

Normal Temperature for September at PLCF1 = 82.2°

Normal Rainfall for September at PLCF1 = 6.99 in.

LAKELAND AREA (records began in January 1915):

Warmest Sep	Coolest Sep	Wettest Sep	Driest Sep
1 83.8 in 2024	1 78.0 in 1940	1 19.67 in 2004	1 0.31 in 1921
83.8 in 2018	2 78.6 in 2001	2 15.52 in 1929	2 0.81 in 1972
3 83.0 in 1987	78.6 in 1947	3 15.47 in 1998	3 0.85 in 2019
4 82.9 in 2023	4 78.7 in 1967	4 15.18 in 1989	4 1.26 in 1944
82.9 in 2016	78.7 in 1956	5 14.03 in 2022	5 1.45 in 2008
82.9 in 1989	6 79.0 in 1953	6 13.75 in 1933	6 1.55 in 1961
7 82.8 in 1998	7 79.1 in 1928	7 13.67 in 2001	7 1.59 in 2023
8 82.7 in 2020	79.1 in 1918	8 12.99 in 2014	8 2.42 in 1927
82.7 in 2019	9 79.2 in 2006	9 12.54 in 2024	9 2.57 in 1925
82.7 in 2010	79.2 in 1950	10 12.33 in 1979	10 2.59 in 1937
82.7 in 1990			...
...			21 3.55 in 2025
27 81.7 in 2025			

Normal Temperature for September at LLDF1 = 81.7°

Normal Rainfall for September at LLDF1 = 7.62 in.

WINTER HAVEN AREA (records began in March 1941):

Warmest Sep	Coolest Sep	Wettest Sep	Driest Sep
1 85.0 in 2018	1 79.2 in 1976	1 17.26 in 1960	1 1.08 in 2008
2 84.5 in 2024	79.2 in 1968	2 14.79 in 2001	2 1.10 in 1972
3 84.3 in 2019	79.2 in 1956	3 13.46 in 1948	3 1.22 in 1961
4 84.0 in 1989	4 79.4 in 1981	4 12.84 in 2014	4 1.61 in 2005
5 83.2 in 1991	79.4 in 1962	5 12.83 in 1947	5 1.96 in 2015
6 83.1 in 2020	6 79.6 in 2001	6 12.47 in 1979	1.96 in 1952
7 82.9 in 2016	7 79.7 in 1983	7 11.32 in 1987	7 2.16 in 1990
8 82.6 in 2002	79.7 in 1959	8 10.54 in 2020	8 2.33 in 2009
82.6 in 1951	9 79.8 in 1967	9 10.51 in 1998	9 2.35 in 2006
10 82.5 in 2010	79.8 in 1964	10.51 in 1920	10 2.47 in 1944
82.5 in 2007	79.8 in 1947		11 2.90 in 1978
82.5 in 1995	...		12 3.00 in 2025
13 82.4 in 2025	64 82.4 in 2025		
82.4 in 2005	82.4 in 2005		
82.4 in 1986	82.4 in 1986		
82.4 in 1944	82.4 in 1944		

Normal Temperature for September at GIF = 82.5°

Normal Rainfall for September at GIF = 5.31 in.

BARTOW (records began in June 1892):

Warmest Sep	Coollest Sep	Wettest Sep	Driest Sep
1 83.5 in 2014	1 77.0 in 1894	1 25.59 in 2022	1 1.04 in 1972
2 83.3 in 1925	2 77.7 in 1913	2 17.24 in 2004	2 1.73 in 2005
3 83.2 in 1988	3 77.8 in 1914	3 16.91 in 1894	3 1.76 in 1904
4 83.1 in 2024	4 78.1 in 1918	4 16.61 in 1928	4 2.35 in 1942
5 82.8 in 2018	5 78.5 in 1940	5 15.96 in 1998	5 2.41 in 1961
82.8 in 2002	78.5 in 1916	6 15.77 in 1933	6 2.47 in 1937
7 82.7 in 1987	7 78.6 in 1895	7 15.59 in 1960	7 2.51 in 1991
8 82.6 in 1951	78.6 in 1893	8 15.06 in 1979	8 2.52 in 1910
82.6 in 1949	9 78.9 in 1922	9 14.64 in 1982	9 2.57 in 1990
10 82.5 in 1958	10 79.0 in 1975	10 14.25 in 1947	10 2.87 in 2019
82.5 in 1944	79.0 in 1967
	79.0 in 1897	83 5.08 in 2025	50 5.08 in 2025
	79.0 in 1892	5.08 in 1971	5.08 in 1971
...	...		
50 81.1 in 2025	70 81.1 in 2025		
81.1 in 2023	81.1 in 2023		
81.1 in 1965	81.1 in 1965		
81.1 in 1946	81.1 in 1946		
81.1 in 1930	81.1 in 1930		

Normal Temperature for September at BARF1 = 80.7°

Normal Rainfall for September at BARF1 = 7.31 in.

SARASOTA-BRADENTON AREA (records began in January 1911):

Warmest Sep	Coollest Sep	Wettest Sep	Driest Sep
1 84.8 in 2019	1 78.2 in 1927	1 21.16 in 1962	1 1.07 in 2005
2 83.9 in 2016	2 78.4 in 1931	2 19.14 in 1953	2 1.17 in 2010
3 83.2 in 2020	3 78.6 in 1916	3 17.31 in 1928	3 1.66 in 2025
4 83.1 in 2024	4 78.7 in 1940	4 16.92 in 1929	4 1.88 in 2023
5 82.8 in 2023	5 78.9 in 1956	5 16.65 in 1912	5 1.94 in 2012
6 82.7 in 2007	6 79.0 in 2001	6 15.86 in 1926	6 1.99 in 2019
7 82.6 in 2018	79.0 in 1984	7 15.65 in 1960	7 2.02 in 1945
8 82.5 in 1951	79.0 in 1922	8 15.57 in 1988	8 2.27 in 1921
82.5 in 1925	9 79.1 in 1976	9 14.54 in 2022	9 2.33 in 1984
10 82.3 in 2010	79.1 in 1935	10 14.50 in 1979	10 2.37 in 1944
82.3 in 2009			
82.3 in 2005			
82.3 in 1989			
...	...		
19 82.0 in 2025	91 82.0 in 2025		
82.0 in 1998	82.0 in 1998		
82.0 in 1958	82.0 in 1958		

Normal Temperature for September at SRQ = 82.2°

Normal Rainfall for September at SRQ = 6.00 in.

VENICE (records began in May 1955):

Warmest Sep	Coolest Sep	Wettest Sep	Driest Sep
1 85.4 in 1989	1 78.1 in 1968	1 20.96 in 2022	1 1.39 in 2019
2 84.6 in 2024	2 78.7 in 1956	2 16.20 in 1960	2 1.72 in 1961
3 84.5 in 2009	3 78.9 in 1976	3 14.77 in 1962	3 1.84 in 1981
4 84.1 in 2010	4 79.8 in 1967	4 14.23 in 1983	4 1.93 in 2005
5 83.6 in 2011	5 79.9 in 2001	5 13.10 in 2013	5 2.21 in 2025
6 83.4 in 2019	79.9 in 1984	6 12.49 in 2003	6 2.22 in 1993
7 83.2 in 2012	7 80.1 in 1987	7 12.31 in 1968	7 2.61 in 1986
8 83.1 in 2018	8 80.2 in 1961	8 12.22 in 2014	8 3.25 in 2011
9 83.0 in 2023	80.2 in 1960	9 11.96 in 1994	9 3.43 in 1958
83.0 in 1998	10 80.3 in 1985	10 11.95 in 1995	10 3.58 in 2023
	80.3 in 1983		
	12 80.4 in 2025		
	80.4 in 2008		
	80.4 in 1981		
	80.4 in 1966		

Normal Temperature for September at VNCF1 = 81.6°

Normal Rainfall for September at VNCF1 = 7.16 in.

MYAKKA RIVER STATE PARK (Temperature records began in March 1956
and Rainfall records began in Sep 1943):

Warmest Sep	Coolest Sep	Wettest Sep	Driest Sep
1 83.8 in 2018	1 78.9 in 2001	1 30.78 in 2022	1 1.48 in 2005
2 83.6 in 2024	78.9 in 1959	2 22.49 in 1962	2 1.66 in 2019
3 82.8 in 2016	3 79.4 in 1962	3 21.08 in 1979	3 2.29 in 1972
4 82.6 in 2019	4 79.7 in 1976	4 18.10 in 2001	4 2.36 in 1961
82.6 in 2009	79.7 in 1963	5 14.65 in 2014	5 2.40 in 1986
6 82.5 in 2010	6 80.1 in 1994	6 14.04 in 1960	6 2.65 in 2008
82.5 in 1991	80.1 in 1968	7 12.82 in 1957	7 2.74 in 1990
8 82.3 in 2015	8 80.3 in 1984	8 12.47 in 2018	8 3.49 in 2023
82.3 in 1998	80.3 in 1972	9 12.12 in 1995	9 3.76 in 1991
82.3 in 1990	80.3 in 1971	10 11.98 in 1982	10 4.19 in 1984
	80.3 in 1969		

Average Temperature for September 2025 = Not Available Yet

Normal Temperature for September at MKCF1 = 81.4°

Total Rainfall for September 2025 = Not Available Yet

Normal Rainfall for September at MKCF1 = 8.45 in.

WAUCHULA (records began in January 1933):

Warmest Sep	Coolest Sep	Wettest Sep	Driest Sep
1 84.5 in 2009	1 78.1 in 1956	1 29.07 in 2022	1 1.19 in 1961
2 83.7 in 2024	2 78.4 in 2001	2 18.06 in 1947	2 1.44 in 1972
3 83.4 in 2008	78.4 in 1953	3 14.38 in 1953	3 1.54 in 2019
4 82.6 in 2018	4 78.7 in 1940	4 13.91 in 1948	4 1.61 in 1933
5 82.5 in 2007	5 78.8 in 2012	5 13.83 in 1960	5 1.91 in 2008
6 82.4 in 1989	6 78.9 in 2013	6 13.65 in 2024	6 2.00 in 1980
7 82.2 in 1988	7 79.1 in 1984	7 12.27 in 2023	7 2.21 in 1991
82.2 in 1933	8 79.2 in 1982	8 11.77 in 2017	8 2.70 in 1978
9 82.0 in 2017	79.2 in 1947	9 11.56 in 1979	9 3.26 in 1976
82.0 in 1974	10 79.3 in 1981	10 11.41 in 1962	10 3.35 in 1987
	79.3 in 1968
...	...	61 5.40 in 2025	31 5.40 in 2025
35 80.8 in 2025	51 80.8 in 2025		
80.8 in 2005	80.8 in 2005		
80.8 in 1937	80.8 in 1937		
80.8 in 1934	80.8 in 1934		

Normal Temperature for September at WAUF1 = 80.8°

Normal Rainfall for September at WAUF1 = 6.32 in.

ARCHBOLD BIO STN (records began in January 1969):

Warmest Sep	Coolest Sep	Wettest Sep	Driest Sep
1 83.0 in 2024	1 78.3 in 1994	1 16.38 in 2022	1 0.70 in 1996
2 82.3 in 2016	2 78.5 in 2001	2 14.54 in 2017	2 2.04 in 2019
3 82.0 in 2017	78.5 in 1984	3 14.15 in 1979	3 2.37 in 1983
4 81.8 in 2015	4 78.6 in 1982	4 12.78 in 2016	4 2.41 in 1988
5 81.7 in 2018	5 79.0 in 1976	5 12.54 in 2004	5 2.92 in 1980
6 81.3 in 2020	6 79.3 in 2012	6 11.55 in 2001	6 3.22 in 2008
7 81.2 in 2023	79.3 in 1999	7 11.47 in 2014	7 3.30 in 2005
81.2 in 1974	79.3 in 1997	8 10.69 in 2012	8 3.58 in 2011
9 81.1 in 2019	79.3 in 1985	9 10.65 in 1982	9 3.67 in 2018
81.1 in 2002	79.3 in 1981	10 10.03 in 2024	10 3.79 in 2006
	79.3 in 1971		

Average Temperature for September 2025 = Not Available Yet

Normal Temperature for September at ACHF1 = 80.7°

Total Rainfall for September 2025 = Not Available Yet

Normal Rainfall for September at ACHF1 = 7.17 in.

PUNTA GORDA AREA (records began in May 1914):

Warmest Sep	Coollest Sep	Wettest Sep	Driest Sep
1 85.6 in 2024	1 78.5 in 1940	1 17.09 in 1959	1 0.93 in 2019
2 84.6 in 2018	2 78.8 in 2001	2 16.54 in 1929	2 1.23 in 1978
3 84.2 in 1951	3 79.1 in 1969	3 16.47 in 1962	3 2.94 in 1952
4 83.9 in 2023	4 79.2 in 1922	4 16.42 in 2022	4 3.33 in 1990
5 83.0 in 1988	5 79.4 in 1917	5 16.13 in 1947	5 3.36 in 1991
6 82.9 in 2009	79.4 in 1914	6 14.86 in 1935	6 3.44 in 1987
7 82.8 in 2020	7 79.5 in 1956	7 14.17 in 2001	7 3.71 in 1972
82.8 in 1986	79.5 in 1929	8 14.15 in 1928	8 3.74 in 1986
9 82.7 in 2017	9 79.9 in 1938	9 14.03 in 1979	9 3.76 in 1965
82.7 in 1933	79.9 in 1928	10 13.77 in 1926	10 3.81 in 1927
...
53 81.5 in 2025	57 81.5 in 2025	80 5.38 in 2025	32 5.38 in 2025
81.5 in 1957	81.5 in 1957		
81.5 in 1954	81.5 in 1954		

Normal Temperature for September at PGD = 82.1°

Normal Rainfall for September at PGD = 6.87 in.

FORT MYERS AREA (records began in January 1902):

Warmest Sep	Coollest Sep	Wettest Sep	Driest Sep
1 84.7 in 1980	1 78.5 in 1917	1 17.35 in 1922	1 1.93 in 1988
2 84.4 in 2024	2 78.7 in 1908	2 17.21 in 2003	2 2.33 in 1972
3 84.0 in 1996	78.7 in 1903	3 16.60 in 1969	3 2.80 in 1961
4 83.7 in 2023	4 78.9 in 1922	4 16.45 in 2022	4 2.86 in 2019
83.7 in 1988	78.9 in 1909	5 16.32 in 1947	5 3.04 in 1937
6 83.6 in 2019	6 79.0 in 1913	6 15.58 in 1953	6 3.07 in 1904
83.6 in 1997	7 79.1 in 1902	7 15.44 in 1929	7 3.24 in 1925
8 83.5 in 1986	8 79.2 in 1910	8 14.86 in 2008	8 3.39 in 1906
83.5 in 1979	9 79.3 in 1976	9 14.54 in 1962	9 3.48 in 1954
10 83.4 in 1990	79.3 in 1918	10 14.49 in 1935	10 3.56 in 1944
	79.3 in 1904		3.56 in 1936
...
29 82.6 in 2025	92 82.6 in 2025	79 6.56 in 2025	44 6.56 in 2025
82.6 in 2005	82.6 in 2005		
82.6 in 1992	82.6 in 1992		
82.6 in 1972	82.6 in 1972		
82.6 in 1961	82.6 in 1961		

Normal Temperature for September at FMY = 82.2°

Normal Rainfall for September at FMY = 9.00 in.

For more past weather information visit our web site at the following link: <https://www.weather.gov/tampabay> and then go to the Climate and Past Weather drop down menu above the graphical forecast images.