



NOAA - National Weather Service

Tampa Bay Area

2525 14th Avenue SE, Ruskin, Florida 33570

813-645-2323 <https://weather.gov/tampabay>

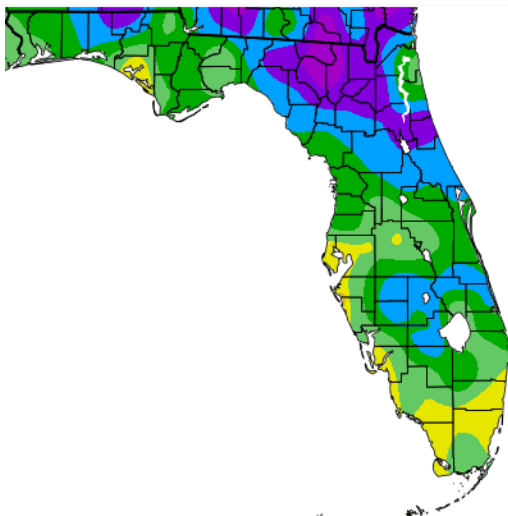
September 2019 Climate Data

September 2019 was rather warm with many locations about 2 to 4 degrees above normal which placed several sites in the Top Ten Warmest for September.

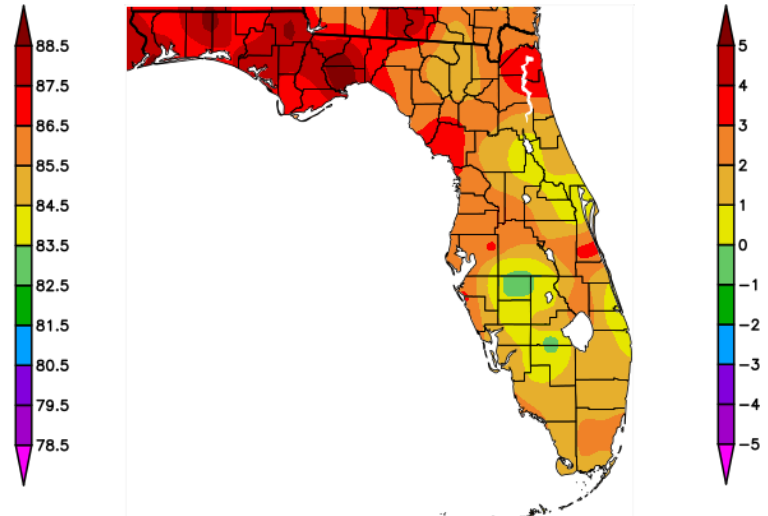
SEPTEMBER TEMPERATURE (°F - Top Ten Warmest):

Location	Sep 2019		Normal Sep Temp	Dep fm Normal	Record	Records Began
	Rank	Avg Temp			Prev/Rec Warmest	
Sarasota-Bradenton Area	1st	84.8°	81.4°	+3.4°	83.9/2016	Jan 1911
Winter Haven Area	2nd	84.3°	81.5°	+2.8°	85.0/2018	Mar 1941
Tampa Area	2nd	84.0°	81.7°	+2.3°	85.8/2018	Apr 1890
Plant City	2nd	83.8°	80.3°	+3.5°	84.9/2018	Sep 1892
Chiefland 5 ESE	2nd	81.6°	77.8°	+3.8°	83.2/2018	Jun 1956
Myakka River State Park	3rd(tie)	82.6°	81.1°	+1.5°	83.8/2018	Mar 1956
Fort Myers Area	4th(tie)	83.6°	82.4°	+1.2°	84.7/1980	Jan 1902
Inverness 3 SE	4th	81.9°	79.4°	+2.5°	82.3/1954	Jul 1948
St Petersburg Area	5th(tie)	84.3°	82.3°	+2.0°	85.7/2005	Aug 1914
Venice	5th(tie)	83.4°	81.0°	+2.4°	85.4/1989	Apr 1955
Lakeland Area	6th(tie)	82.7°	80.2°	+2.5°	83.8/2018	Jan 1915
Archbold Bio Stn	6th(tie)	81.1°	79.7°	+1.4°	82.3/2016	Jan 1969
Tarpon Springs	7th(tie)	82.7°	80.2°	+2.5°	84.2/2018	Jan 1892
Brooksville Area	8th(tie)	81.5°	79.3°	+2.2°	82.8/2018	Jan 1892

Temperature (F)
9/1/2019 - 9/30/2019



Departure from Normal Temperature (F)
9/1/2019 - 9/30/2019

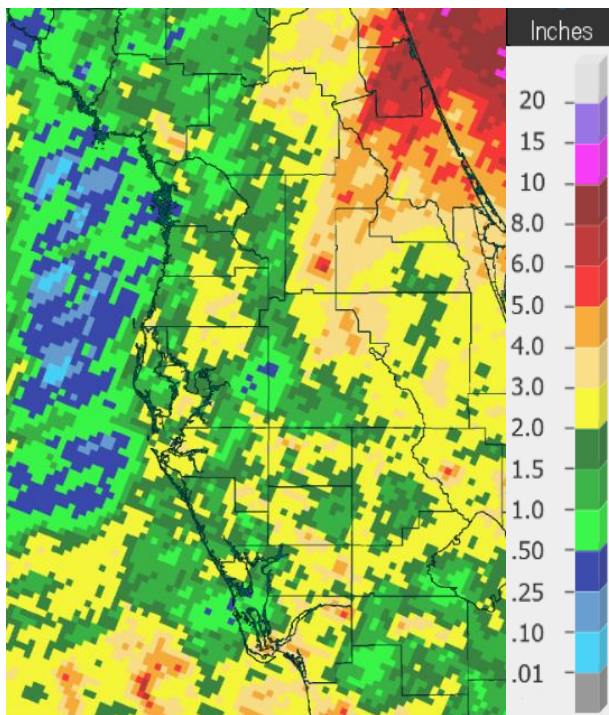


However, the big story for September was the lack of rainfall with much of the area well below normal as dry high pressure setup to our north and northeast for much of the month. Many locations ended up in the Top Ten Driest for September with the driest areas, as indicated by the red sections on the right map below, seeing less than 25 percent of the normal rainfall for the month.

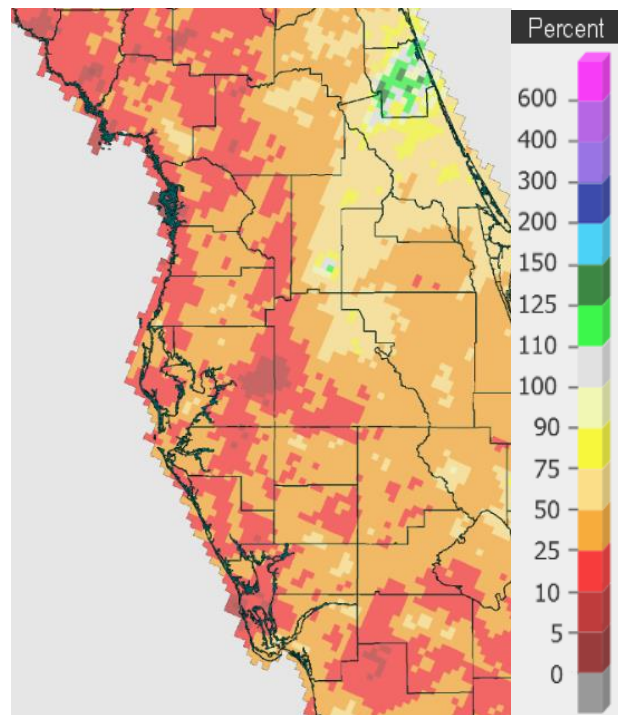
SEPTEMBER RAINFALL (inches - Top Ten Driest):

Location	Sep 2019 Rank	Sep 2019 Rainfall	Normal Sep Rain	Dep fm Normal	Record/Prev Rec Driest	Records Began
Chiefland 5 ESE	1st	0.43	6.89	-6.46	0.86/1972	Jun 1956
Punta Gorda Area	1st	0.93	7.23	-6.30	1.23/1978	May 1914
St Petersburg Area	1st(tie)	1.09	7.76	-6.67	1.09/2008	Aug 1914
Venice	1st	1.39	6.93	-5.54	1.72/1961	Apr 1955
Myakka River State Park	2nd	1.66	7.91	-6.25	1.48/2005	Sep 1943
Archbold Bio Stn	2nd	2.04	6.46	-4.42	0.70/1996	Jan 1969
Lakeland Area	3rd	0.85	7.44	-6.59	0.31/1921	Jan 1915
Plant City	3rd	0.92	7.09	-6.17	0.71/1972	Sep 1892
Wauchula 2 N	3rd	1.54	6.09	-4.55	1.19/1961	Jan 1933
Bushnell	4th	1.27	6.00	-4.73	0.35/2008	Jul 1948
Sarasota-Bradenton Area	4th	1.99	7.10	-5.11	1.07/2005	Jan 1911
Fort Myers Area	4th	2.86	8.31	-5.45	1.93/1988	Jan 1902
Tampa Area	6th	1.46	6.30	-4.84	0.79/2005*	Apr 1890
Arcadia	6th	2.38	7.28	-4.90	1.40/1961	Nov 1899
Inverness 3 SE	8th	1.82	6.00	-4.18	0.76/1961	Jul 1948
Brooksville Area	8th	2.07	6.56	-4.49	0.48/1972	Jan 1892
Bartow	10th	2.87	6.55	-3.68	1.04/1972	Jun 1892

*Last of Multiple Occurrences



Rainfall Sept 2019



Percent of Normal

On the following pages are tables of the Top Ten Warmest, Coolest, Wettest, and Driest Septembers at some official NWS locations, which includes the average/total for this September and the 1981-2010 Normal (average) temperature and rainfall for the month of September.

CHIEFLAND 5 SE (records began in July 1956):

Warmest Sept	Coolest Sept	Wettest Sept	Driest Sept
1 83.2 in 2018	1 75.8 in 1967	1 21.39 in 2004	1 0.43 in 2019
2 81.6 in 2019	2 76.1 in 1969	2 20.12 in 1988	2 0.86 in 1972
3 81.0 in 2016	76.1 in 1956	3 16.04 in 1964	3 1.06 in 1968
81.0 in 1970	4 76.3 in 2001	4 14.77 in 1998	4 1.10 in 2008
5 80.8 in 1986	5 76.7 in 2006	5 13.65 in 1983	5 1.23 in 1978
80.8 in 1980	6 76.9 in 1985	6 10.49 in 1979	6 1.74 in 1997
7 80.5 in 1988	7 77.0 in 1994	7 10.18 in 2017	7 1.97 in 1967
8 80.4 in 1998	77.0 in 1966	8 10.16 in 1989	8 1.99 in 2003
80.4 in 1959	9 77.6 in 2008	9 10.11 in 2000	9 2.15 in 1961
10 80.3 in 1973	77.6 in 1982	10 10.03 in 1966	10 2.20 in 1958

Normal Temperature for September at CHIF1 = 77.8°
 Normal Rainfall for September at CHIF1 = 6.89 inches

INVERNESS 3 SE (records began in July 1948):

Warmest Sept	Coolest Sept	Wettest Sept	Driest Sept
1 82.3 in 1954	1 76.8 in 1994	1 16.73 in 2016	1 0.76 in 1961
2 82.2 in 1958	2 77.0 in 2001	2 16.54 in 1950	2 1.07 in 2008
3 82.0 in 1970	3 77.1 in 1997	3 16.49 in 2017	3 1.21 in 1967
4 81.9 in 2019	4 77.3 in 1956	4 16.27 in 2004	4 1.25 in 1972
5 81.8 in 1974	5 77.7 in 1976	5 15.67 in 2001	5 1.74 in 1954
6 81.7 in 2010	6 77.9 in 1984	6 15.24 in 1960	6 1.76 in 2012
7 81.4 in 2009	7 78.0 in 1981	7 13.15 in 1979	7 1.80 in 1990
8 81.2 in 2018	8 78.1 in 2006	8 12.23 in 1982	8 1.82 in 2019
81.2 in 1977	78.1 in 1983	9 11.92 in 1964	9 1.96 in 1996
10 81.1 in 2016	10 78.4 in 1996	10 10.89 in 1988	10 2.04 in 2005
81.1 in 1965			
81.1 in 1951			

Normal Temperature for September at INVF1 = 79.4°
 Normal Rainfall for September at INVF1 = 6.00 inches

BUSHNELL 1 E (records began in July 1948):

Warmest Sept	Coolest Sept	Wettest Sept	Driest Sept
1 81.2 in 2002	1 76.6 in 1981	1 16.88 in 1950	1 0.35 in 2008
81.2 in 1983	2 77.2 in 1967	2 16.57 in 2004	2 0.88 in 2005
3 81.1 in 1970	3 77.3 in 1956	3 14.95 in 2001	3 1.04 in 1958
4 81.0 in 2018	4 77.4 in 1964	4 14.53 in 1964	4 1.27 in 2019
81.0 in 1991	5 77.8 in 1968	5 14.07 in 1960	5 1.44 in 1984
6 80.8 in 1995	6 77.9 in 1966	6 12.56 in 1949	6 1.54 in 1961
80.8 in 1974	7 78.1 in 1982	7 11.99 in 2017	7 1.93 in 1956
80.8 in 1958	8 78.2 in 1976	8 11.72 in 1997	8 2.36 in 2009
80.8 in 1955	9 78.3 in 1978	9 10.28 in 1979	9 2.38 in 1954
10 80.7 in 1951	10 78.5 in 2012	10 10.27 in 1952	10 2.57 in 1968
...	...		
30 79.2 in 2019	20 79.2 in 2019		
79.2 in 1972	79.2 in 1972		
79.2 in 1965	79.2 in 1965		

Normal Temperature for September at BSHF1 = 79.8°

Normal Rainfall for September at BSHF1 = 6.00 inches

BROOKSVILLE AREA (records began in January 1892):

Warmest Sept	Coolest Sept	Wettest Sept	Driest Sept
1 82.8 in 2018	1 77.2 in 2001	1 22.34 in 1950	1 0.48 in 1972
2 82.5 in 1926	2 77.5 in 1894	2 17.32 in 1979	2 0.90 in 2008
3 81.9 in 1906	3 77.6 in 1956	3 15.87 in 1894	3 1.39 in 1910
4 81.8 in 1958	4 77.7 in 1940	4 15.53 in 1912	4 1.69 in 1991
81.8 in 1925	5 77.8 in 1892	5 15.16 in 1935	5 1.74 in 1990
6 81.7 in 1930	6 77.9 in 1953	6 14.12 in 1988	6 1.90 in 1958
7 81.6 in 1911	7 78.0 in 1983	7 13.88 in 1947	7 2.02 in 1961
8 81.5 in 2019	8 78.1 in 1994	8 13.77 in 1938	8 2.07 in 2019
81.5 in 2002	78.1 in 1897	9 13.33 in 2016	9 2.09 in 1909
81.5 in 1991	10 78.2 in 2003	10 12.84 in 1960	10 2.29 in 2007
	78.2 in 1967		
	78.2 in 1893		

Normal Temperature for September at BKV = 79.3°

Normal Rainfall for September at BKV = 6.56 inches

ST LEO (records began in April 1895):

Warmest Sept	Coolest Sept	Wettest Sept	Driest Sept
1 83.5 in 1925	1 76.3 in 1922	1 17.44 in 2004	1 0.75 in 1990
2 82.5 in 2002	2 77.1 in 1935	2 17.38 in 1929	2 1.17 in 1972
3 82.3 in 1900	77.1 in 1918	3 17.03 in 1950	3 1.21 in 1978
4 82.2 in 2009	4 77.4 in 1903	4 16.81 in 1912	4 1.76 in 1995
5 82.1 in 2018	5 77.9 in 1927	5 16.52 in 1960	5 1.97 in 2008
6 82.0 in 1944	77.9 in 1917	6 15.07 in 1935	6 2.05 in 1991
7 81.9 in 2008	77.9 in 1914	7 15.01 in 1933	7 2.10 in 1910
81.9 in 2007	8 78.0 in 1940	8 14.93 in 1949	8 2.23 in 2018
9 81.8 in 2005	9 78.1 in 1897	9 14.70 in 1953	9 2.24 in 1911
81.8 in 1958	10 78.3 in 1956	10 13.33 in 1982	10 2.41 in 2010
81.8 in 1951	78.3 in 1920		11 2.43 in 2019
	78.3 in 1916		
...			
30 81.0 in 2019	91 81.0 in 2019		
in 1988	in 1988		
in 1973	in 1973		
in 1926	in 1926		

Normal Temperature for September at STLf1 = 81.0°
Normal Rainfall for September at STLf1 = 6.81 inches

TARPON SPRINGS (records began in January 1892):

Warmest Sept	Coolest Sept	Wettest Sept	Driest Sept
1 84.2 in 2018	1 78.2 in 1894	1 18.13 in 1988	1 0.44 in 2005
2 84.0 in 1925	2 78.4 in 1967	2 15.80 in 2006	2 0.58 in 1972
3 83.5 in 1933	78.4 in 1899	3 15.54 in 1971	3 0.82 in 2008
4 83.2 in 1996	4 78.5 in 1956	4 15.39 in 1935	0.82 in 1921
5 83.0 in 1921	5 78.6 in 1940	5 15.28 in 2014	5 1.97 in 1910
6 82.9 in 1944	78.6 in 1916	6 14.27 in 1911	6 2.05 in 1967
7 82.7 in 2019	7 78.7 in 1900	7 13.21 in 1959	7 2.16 in 2007
82.7 in 1997	78.7 in 1896	8 13.12 in 1898	2.16 in 1952
9 82.6 in 1926	78.7 in 1895	9 12.79 in 1983	9 2.65 in 1919
10 82.3 in 1951	10 78.8 in 1983	10 12.70 in 1960	10 2.69 in 1978
82.3 in 1930	78.8 in 1918
	78.8 in 1903	102 4.18 in 2019	27 4.18 in 2019

Normal Temperature for September at TRPF1 = 80.2°
Normal Rainfall for September at TRPF1 = 6.99 inches

TAMPA AREA (records began in April 1890):

Warmest Sept	Coolest Sept	Wettest Sept	Driest Sept
1 85.8 in 2018	1 77.5 in 1897	1 18.93 in 1912	1 0.79 in 2005
2 84.0 in 2019	2 78.4 in 1914	2 17.28 in 1894	0.79 in 1910
3 83.8 in 2016	3 78.5 in 1956	3 13.98 in 1979	3 1.05 in 1937
4 83.4 in 2017	4 78.6 in 1981	4 13.56 in 1988	4 1.13 in 2010
5 83.2 in 2010	78.6 in 1940	5 13.29 in 1929	5 1.28 in 1972
83.2 in 1925	6 78.8 in 1903	6 13.04 in 1947	6 1.46 in 2019
7 83.1 in 1944	7 78.9 in 1922	7 12.84 in 1997	7 1.58 in 1921
8 82.9 in 2005	8 79.1 in 1913	8 12.40 in 2006	8 1.68 in 1904
82.9 in 1958	79.1 in 1894	9 11.76 in 2001	9 1.90 in 1927
10 82.8 in 2015	10 79.2 in 2001	10 11.56 in 1953	10 2.08 in 1915
82.8 in 1990	79.2 in 1967		
82.8 in 1974	79.2 in 1899		
82.8 in 1933			

Normal Temperature for September at TPA = 81.7°

Normal Rainfall for September at TPA = 6.30 inches

ST PETERSBURG (records began in August 1914):

Warmest Sept	Coolest Sept	Wettest Sept	Driest Sept
1 85.7 in 2005	1 79.0 in 1956	1 25.51 in 1988	1 1.09 in 2019
2 84.8 in 1925	2 79.6 in 1953	2 18.60 in 1953	1.09 in 2008
3 84.4 in 2018	3 79.7 in 2001	3 16.39 in 2001	3 1.40 in 1967
84.4 in 2010	79.7 in 1950	4 14.40 in 1929	4 1.48 in 1972
5 84.3 in 2019	79.7 in 1940	5 14.03 in 1962	5 1.61 in 2010
84.3 in 1933	6 80.0 in 1994	6 13.39 in 1928	6 1.84 in 1990
7 83.8 in 2017	80.0 in 1914	7 13.07 in 1933	7 1.90 in 2005
83.8 in 1970	8 80.2 in 1983	8 12.63 in 1997	8 2.13 in 1915
9 83.7 in 2008	9 80.4 in 1918	9 12.46 in 2004	9 2.30 in 1944
10 83.6 in 1986	10 80.5 in 1947	10 12.36 in 1926	10 2.35 in 1925
83.6 in 1944	80.5 in 1917		
83.6 in 1941			

Normal Temperature for September at SPG = 82.3°

Normal Rainfall for September at SPG = 7.76 inches

PLANT CITY (records began in September 1892):

Warmest Sept	Coolest Sept	Wettest Sept	Driest Sept
1 84.9 in 2018	1 77.7 in 1940	1 18.43 in 1894	1 0.71 in 1972
2 83.8 in 2019	2 77.9 in 1907	2 18.21 in 2004	2 0.75 in 1909
3 83.4 in 2017	3 78.0 in 1932	3 17.09 in 1947	3 0.92 in 2019
4 82.9 in 2016	78.0 in 1918	4 16.77 in 1998	4 0.97 in 1915
5 81.8 in 1958	5 78.4 in 1953	5 15.42 in 1988	5 1.12 in 1991
81.8 in 1951	78.4 in 1931	6 15.12 in 1960	6 1.26 in 1961
7 81.7 in 1974	7 78.6 in 1910	7 14.75 in 1933	7 1.27 in 1937
81.7 in 1970	78.6 in 1909	8 14.20 in 1979	8 1.50 in 1911
9 81.6 in 2010	9 78.7 in 1956	9 13.38 in 1912	9 1.64 in 1990
81.6 in 1977	78.7 in 1913	10 12.49 in 1929	10 2.15 in 1978
81.6 in 1925			2.15 in 1967

Normal Temperature for September at PLCF1 = 80.3°
Normal Rainfall for September at PLCF1 = 7.09 inches

LAKELAND AREA (records began in January 1915):

Warmest Sept	Coolest Sept	Wettest Sept	Driest Sept
1 83.8 in 2018	1 78.0 in 1940	1 19.67 in 2004	1 0.31 in 1921
2 83.0 in 1987	2 78.6 in 2001	2 15.52 in 1929	2 0.81 in 1972
3 82.9 in 2016	78.6 in 1947	3 15.47 in 1998	3 0.85 in 2019
82.9 in 1989	4 78.7 in 1967	4 15.18 in 1989	4 1.26 in 1944
5 82.8 in 1998	78.7 in 1956	5 13.75 in 1933	5 1.45 in 2008
6 82.7 in 2019	6 79.0 in 1953	6 13.67 in 2001	6 1.55 in 1961
82.7 in 2010	7 79.1 in 1928	7 12.99 in 2014	7 2.42 in 1927
82.7 in 1990	79.1 in 1918	8 12.33 in 1979	8 2.57 in 1925
9 82.6 in 1986	9 79.2 in 2006	9 12.16 in 2017	9 2.59 in 1937
10 82.5 in 2015	79.2 in 1950	10 11.68 in 1947	10 2.68 in 1991
82.5 in 1991			

Normal Temperature for September at LLDF1 = 80.2°
Normal Rainfall for September at LLDF1 = 7.44 inches

WINTER HAVEN AREA (records began in March 1941):

Warmest Sept	Coolest Sept	Wettest Sept	Driest Sept
1 85.0 in 2018	1 79.2 in 1976	1 17.26 in 1998	1 1.08 in 2008
2 84.3 in 2019	79.2 in 1968	2 14.79 in 2001	2 1.10 in 1972
3 84.0 in 1989	79.2 in 1956	3 13.46 in 1948	3 1.22 in 1961
4 83.2 in 1991	4 79.4 in 1981	4 12.84 in 2014	4 1.61 in 2005
5 82.9 in 2016	79.4 in 1962	5 12.83 in 1947	5 1.96 in 2015
6 82.6 in 2002	6 79.6 in 2001	6 12.47 in 1979	1.96 in 1952
82.6 in 1951	7 79.7 in 1983	7 11.32 in 1987	7 2.16 in 1990
8 82.5 in 2010	79.7 in 1959	8 10.51 in 1998	8 2.33 in 2009
82.5 in 2007	9 79.8 in 1967	10.51 in 1920	9 2.35 in 2006
82.5 in 1995	79.8 in 1964	10 9.69 in 1973	10 2.47 in 1944
	79.8 in 1947
		55 3.82 in 2019	24 3.82 in 2019

Normal Temperature for September at GIF = 81.5°

Normal Rainfall for September at GIF = 6.25 inches

BARTOW (records began in June 1892):

Warmest Sept	Coolest Sept	Wettest Sept	Driest Sept
1 83.5 in 2014	1 77.0 in 1894	1 17.24 in 2004	1 1.04 in 1972
2 83.3 in 1925	2 77.7 in 1913	2 16.91 in 1894	2 1.73 in 2005
3 83.2 in 1988	3 77.8 in 1914	3 16.61 in 1928	3 1.76 in 1904
4 82.8 in 2018	4 78.1 in 1918	4 15.96 in 1998	4 2.35 in 1942
82.8 in 2002	5 78.5 in 1940	5 15.77 in 1933	5 2.41 in 1961
6 82.7 in 1987	78.5 in 1916	6 15.59 in 1960	6 2.47 in 1937
7 82.6 in 1951	7 78.6 in 1895	7 15.06 in 1979	7 2.51 in 1991
82.6 in 1949	78.6 in 1893	8 14.64 in 1982	8 2.52 in 1910
9 82.5 in 1958	9 78.9 in 1922	9 14.25 in 1947	9 2.57 in 1990
82.5 in 1944	10 79.0 in 1975	10 13.72 in 1908	10 2.87 in 2019
...	79.0 in 1967		
28 81.5 in 2019	79.0 in 1897		
in 2012	79.0 in 1892		
in 1993			
in 1955			
in 1937			

Normal Temperature for September at BARF1 = 81.4°

Normal Rainfall for September at BARF1 = 6.55 inches

SARASOTA-BRADENTON AREA (records began in January 1911):

Warmest Sept	Coolest Sept	Wettest Sept	Driest Sept
1 84.8 in 2019	1 78.2 in 1927	1 21.16 in 1962	1 1.07 in 2005
2 83.9 in 2016	2 78.4 in 1931	2 19.14 in 1953	2 1.17 in 2010
3 82.7 in 2007	3 78.6 in 1916	3 17.31 in 1928	3 1.94 in 2012
4 82.6 in 2018	4 78.7 in 1940	4 16.92 in 1929	4 1.99 in 2019
5 82.5 in 1951	5 78.9 in 1956	5 16.65 in 1912	5 2.02 in 1945
82.5 in 1925	6 79.0 in 2001	6 15.86 in 1926	6 2.27 in 1921
7 82.3 in 2010	79.0 in 1984	7 15.65 in 1960	7 2.33 in 1984
82.3 in 2009	79.0 in 1922	8 15.57 in 1988	8 2.37 in 1944
82.3 in 2005	9 79.1 in 1976	9 14.50 in 1979	9 2.41 in 1972
82.3 in 1989	79.1 in 1935	10 13.40 in 1989	10 2.74 in 1991

Normal Temperature for September at SRQ = 81.4°

Normal Rainfall for September at SRQ = 7.10 inches

VENICE (records began in April 1955):

Warmest Sept	Coolest Sept	Wettest Sept	Driest Sept
1 85.4 in 1989	1 78.1 in 1968	1 16.20 in 1960	1 1.39 in 2019
2 84.5 in 2009	2 78.7 in 1956	2 14.77 in 1962	2 1.72 in 1961
3 84.1 in 2010	3 78.9 in 1976	3 14.23 in 1983	3 1.84 in 1981
4 83.6 in 2011	4 79.8 in 1967	4 13.10 in 2013	4 1.93 in 2005
5 83.4 in 2019	5 79.9 in 2001	5 12.49 in 2003	5 2.22 in 1993
6 83.2 in 2012	79.9 in 1984	6 12.31 in 1968	6 2.61 in 1986
7 83.1 in 2018	7 80.1 in 1987	7 12.22 in 2014	7 3.25 in 2011
8 83.0 in 1998	8 80.2 in 1961	8 11.96 in 1994	8 3.43 in 1958
9 82.9 in 2002	80.2 in 1960	9 11.95 in 1995	9 3.69 in 1965
10 82.5 in 1995	10 80.3 in 1985	10 11.44 in 1975	10 3.79 in 1990
	80.3 in 1983		3.79 in 1984

Normal Temperature for September at VNCF1 = 81.0°

Normal Rainfall for September at VNCF1 = 6.93 inches

MYAKKA RIVER STATE PARK (Temperature records began in March 1956
and Rainfall records began in Sep 1943):

Warmest Sept	Coolest Sept	Wettest Sept	Driest Sept
1 83.8 in 2018	1 78.9 in 2001	1 22.49 in 1962	1 1.48 in 2005
2 82.8 in 2016	78.9 in 1959	2 21.08 in 1979	2 1.66 in 2019
3 82.6 in 2019	3 79.4 in 1962	3 18.10 in 2001	3 2.29 in 1972
82.6 in 2009	4 79.7 in 1976	4 14.65 in 2014	4 2.36 in 1961
5 82.5 in 2010	79.7 in 1963	5 14.04 in 1960	5 2.40 in 1986
82.5 in 1991	6 80.1 in 1994	6 12.82 in 1957	6 2.65 in 2008
7 82.3 in 2015	80.1 in 1968	7 12.47 in 2018	7 2.74 in 1990
82.3 in 1998	8 80.3 in 1984	8 12.42 in 1995	8 3.76 in 1991
82.3 in 1990	80.3 in 1975	9 11.98 in 1982	9 4.19 in 1984
10 82.2 in 2002	80.3 in 1971	10 11.96 in 1994	10 4.24 in 1966
82.2 in 1996	80.3 in 1969		
82.2 in 1993			

Normal Temperature for September at MKCF1 = 81.1°
Normal Rainfall for September at MKCF1 = 7.91 inches

WAUCHULA 2 N (records began in January 1933):

Warmest Sept	Coolest Sept	Wettest Sept	Driest Sept
1 84.5 in 2009	1 78.1 in 1956	1 18.06 in 1947	1 1.19 in 1961
2 83.4 in 2008	2 78.4 in 2001	2 14.38 in 1953	2 1.44 in 1972
3 82.6 in 2018	78.4 in 1953	3 13.91 in 1948	3 1.54 in 2019
4 82.5 in 2007	4 78.7 in 1940	4 13.83 in 1960	4 1.61 in 1933
5 82.4 in 1989	5 78.8 in 2012	5 11.77 in 2017	5 1.91 in 2008
6 82.2 in 1988	6 78.9 in 2013	6 11.56 in 1979	6 2.00 in 1980
82.2 in 1933	7 79.1 in 1984	7 11.41 in 1962	7 2.21 in 1991
8 82.0 in 2017	8 79.2 in 1982	8 11.33 in 2015	8 2.70 in 1978
82.0 in 1974	79.2 in 1947	9 10.95 in 1982	9 3.26 in 1976
10 81.9 in 2016	10 79.3 in 1981	10 10.47 in 2000	10 3.35 in 1987
	79.3 in 1968		
...	...		
28 81.1 in 2019	53 81.1 in 2019		
in 2004	in 2004		
in 1970	in 1970		

Normal Temperature for September at WAUF1 = 82.1°
Normal Rainfall for September at WAUF1 = 6.09 inches

ARCADIA (records began in November 1899):

Warmest Sept	Coollest Sept	Wettest Sept	Driest Sept
1 82.3 in 2018	1 75.7 in 1990	1 17.71 in 1940	1 1.40 in 1961
2 81.8 in 1905	2 77.9 in 1971	2 17.05 in 1960	2 2.02 in 1925
3 81.7 in 1974	3 78.5 in 1976	3 16.10 in 2017	3 2.05 in 1909
81.7 in 1933	4 78.7 in 1985	4 15.67 in 1908	4 2.24 in 1980
81.7 in 1925	78.7 in 1910	5 15.66 in 1930	5 2.28 in 2018
81.7 in 1902	6 78.8 in 1984	6 14.81 in 1929	6 2.38 in 2019
7 81.6 in 1912	78.8 in 1968	7 14.67 in 2001	7 2.39 in 1972
8 81.5 in 2011	8 78.9 in 1969	8 13.74 in 1979	8 2.44 in 1911
81.5 in 1991	78.9 in 1909	9 13.30 in 2003	9 2.60 in 1990
81.5 in 1944	10 79.0 in 2001	13.30 in 1962	10 2.75 in 1932
81.5 in 1900	79.0 in 1940		
...	...		
54 80.3 in 2019	53 80.3 in 2019		
in 1946	in 1946		
in 1945	in 1945		

Normal Temperature for September at ARCF1 = 80.2°
Normal Rainfall for September at ARCF1 = 7.28 inches

ARCHBOLD BIO STN (records began in January 1969):

Warmest Sept	Coollest Sept	Wettest Sept	Driest Sept
1 82.3 in 2016	1 78.3 in 1994	1 14.54 in 2017	1 0.70 in 1996
2 82.0 in 2017	2 78.5 in 2001	2 14.15 in 1979	2 2.04 in 2019
3 81.8 in 2015	78.5 in 1984	3 12.78 in 2016	3 2.37 in 1983
4 81.7 in 2018	4 78.6 in 1982	4 12.54 in 2004	4 2.41 in 1988
5 81.2 in 1974	5 79.0 in 1976	5 11.55 in 2001	5 2.92 in 1980
6 81.1 in 2019	6 79.3 in 2012	6 11.47 in 2014	6 3.22 in 2008
81.1 in 2002	79.3 in 1999	7 10.69 in 2012	7 3.30 in 2005
8 80.9 in 2010	79.3 in 1997	8 10.65 in 1982	8 3.58 in 2011
80.9 in 2009	79.3 in 1985	9 9.97 in 1973	9 3.67 in 2018
80.9 in 1989	79.3 in 1981	10 9.92 in 1987	10 3.79 in 2006
	79.3 in 1971		

Normal Temperature for September at ACHF1 = 79.7°
Normal Rainfall for September at ACHF1 = 6.46 inches

PUNTA GORDA AREA (records began in May 1914):

Warmest Sept	Coollest Sept	Wettest Sept	Driest Sept
1 84.6 in 2018	1 78.5 in 1940	1 17.09 in 1959	1 0.93 in 2019
2 84.2 in 1951	2 78.8 in 2001	2 16.54 in 1929	2 1.23 in 1978
3 83.0 in 1988	3 79.1 in 1969	3 16.47 in 1962	3 2.94 in 1952
4 82.9 in 2009	4 79.2 in 1922	4 16.13 in 1947	4 3.33 in 1990
5 82.8 in 1986	5 79.4 in 1917	5 14.86 in 1935	5 3.36 in 1991
6 82.7 in 2017	79.4 in 1914	6 14.17 in 2001	6 3.44 in 1987
82.7 in 1933	7 79.5 in 1956	7 14.15 in 1928	7 3.71 in 1972
8 82.6 in 2011	79.5 in 1929	8 14.03 in 1979	8 3.74 in 1986
82.6 in 1989	9 79.9 in 1938	9 13.77 in 1926	9 3.76 in 1965
10 82.5 in 2016	79.9 in 1928	10 13.67 in 2003	10 3.81 in 1927
82.5 in 1944			
...			
17 82.3 in 2019			
in 1995			
in 1992			
in 1977			
in 1949			
in 1945			

Normal Temperature for September at PGD = 82.0°

Normal Rainfall for September at PGD = 7.23 inches

FORT MYERS AREA (records began in January 1902):

Warmest Sept	Coollest Sept	Wettest Sept	Driest Sept
1 84.7 in 1980	1 78.5 in 1917	1 17.35 in 1922	1 1.93 in 1988
2 84.0 in 1996	2 78.7 in 1908	2 17.21 in 2003	2 2.33 in 1972
3 83.7 in 1988	78.7 in 1903	3 16.60 in 1969	3 2.80 in 1961
4 83.6 in 2019	4 78.9 in 1922	4 16.32 in 1947	4 2.86 in 2019
83.6 in 1997	78.9 in 1909	5 15.58 in 1953	5 3.04 in 1937
6 83.5 in 1986	6 79.0 in 1913	6 15.44 in 1929	6 3.07 in 1904
83.5 in 1979	7 79.1 in 1902	7 14.86 in 2008	7 3.24 in 1925
8 83.4 in 1990	8 79.2 in 1910	8 14.54 in 1962	8 3.39 in 1906
9 83.1 in 2018	9 79.3 in 1976	9 14.49 in 1935	9 3.48 in 1954
83.1 in 2011	79.3 in 1918	10 14.14 in 2001	10 3.56 in 1944
83.1 in 2010	79.3 in 1904		3.56 in 1936
83.1 in 1997			
83.1 in 1987			
83.1 in 1985			
83.1 in 1981			

Normal Temperature for September at FMY = 82.4°

Normal Rainfall for September at FMY = 8.31 inches

For more Climate information visit our web site at the following link:
<http://www.weather.gov/tampabay> and then go to the Climate and Past
Weather drop down menu above the graphical forecast images.

Contact: Paul Close, Paul.Close@noaa.gov

Date: 10/07/2019