



# Hurricane Gabrielle

## Fact Sheet

Event date: September 11 - 19, 2001

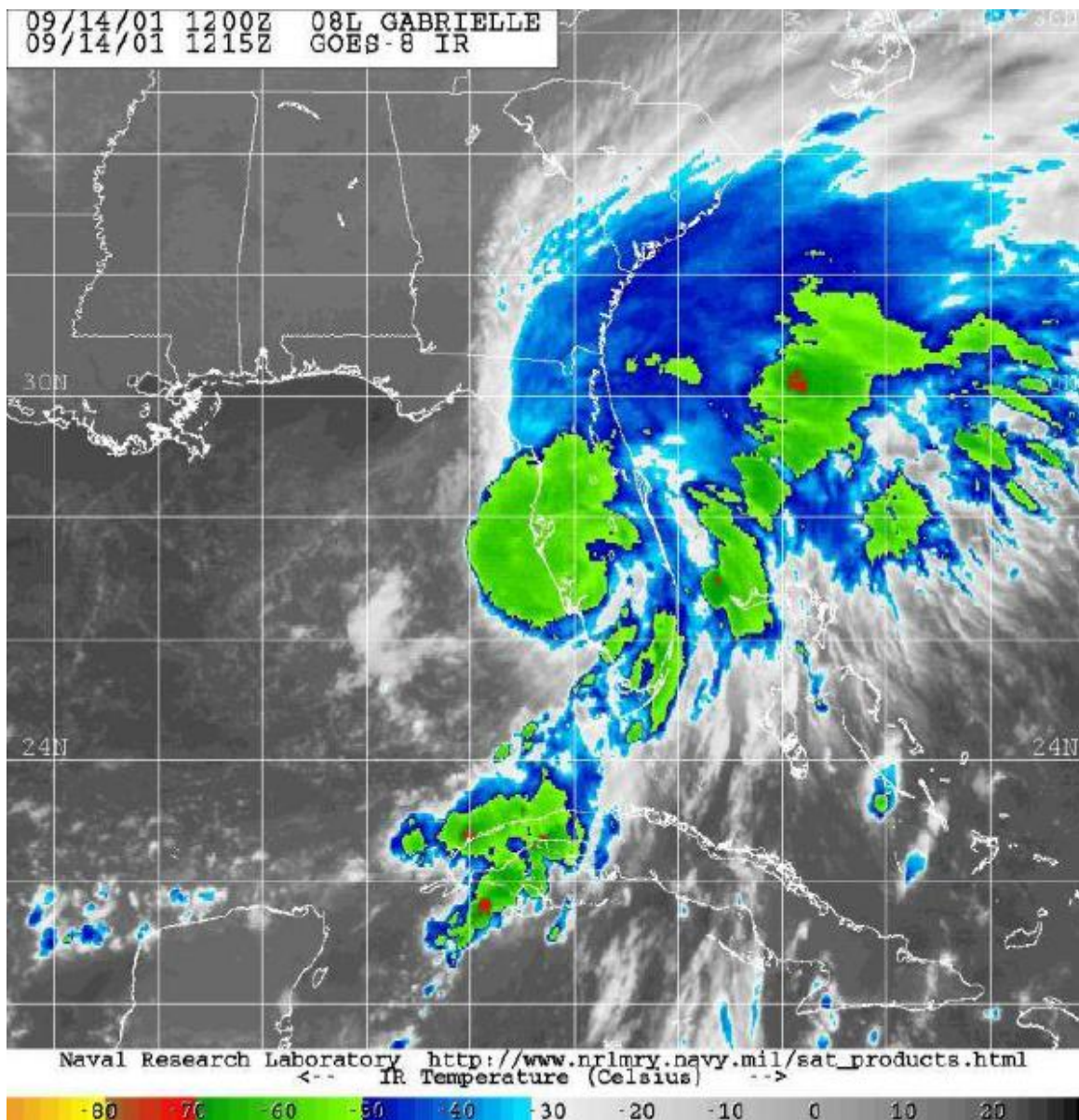
Peak winds: 80 mph

Landfall winds: 70 mph

Minimum pressure: 983 mb

Landfall pressure: 983 mb

Maximum rainfall: 7 inches



**Figure 1.** Hurricane Gabrielle which weakened to a tropical storm just before landfall in southwest Florida.

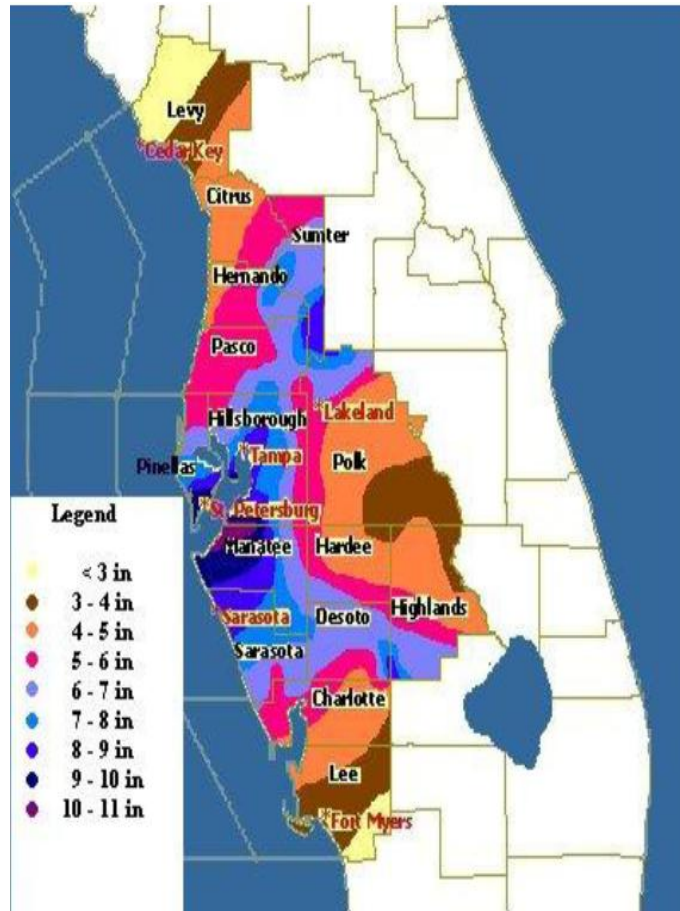
NOAA AND THE PRESERVE  
AMERICA  
*Initiative*



**Summary of event:** Tropical storm Gabrielle formed during the afternoon of September 13, 2001, after meandering as a tropical wave and depression in the Gulf of Mexico. Just before landfall in Venice (Sarasota County) Hurricane Gabrielle reached her peak intensity, with a minimum central pressure of 983 mb, along with a small core of hurricane winds (80 mph). The combination of wind, rain, and coastal flooding produced damage which exceeded \$15 million across the Tampa Bay area. Freshwater flooding of small streams, creeks, and poor drainage locations was noted across much of the area. Hardest hit were areas south of Tampa Bay, where antecedent rainfall during the prior week had already pushed many small streams and creeks toward critical stages. Rainfall totaled 4-8 inches in most areas, with select locations receiving 10 inches. Storm surge flooding occurred immediately southeast of where Gabrielle made landfall. This included Englewood, south to the Lee County barrier islands. High tides of 6.2 feet (5.1 above normal) resulted from the combination of a surge of south winds up the harbor, and sheet flow from flooded areas of southern Desoto County. Sustained tropical storm force winds affected a fairly large portion of west central and southwest Florida, mainly along and south of a Tampa Bay to Lakeland line. Tropical storm force gusts were felt across the entire Tampa Bay region.



**Figure 2.** Freshwater flooding in Hillsborough County.

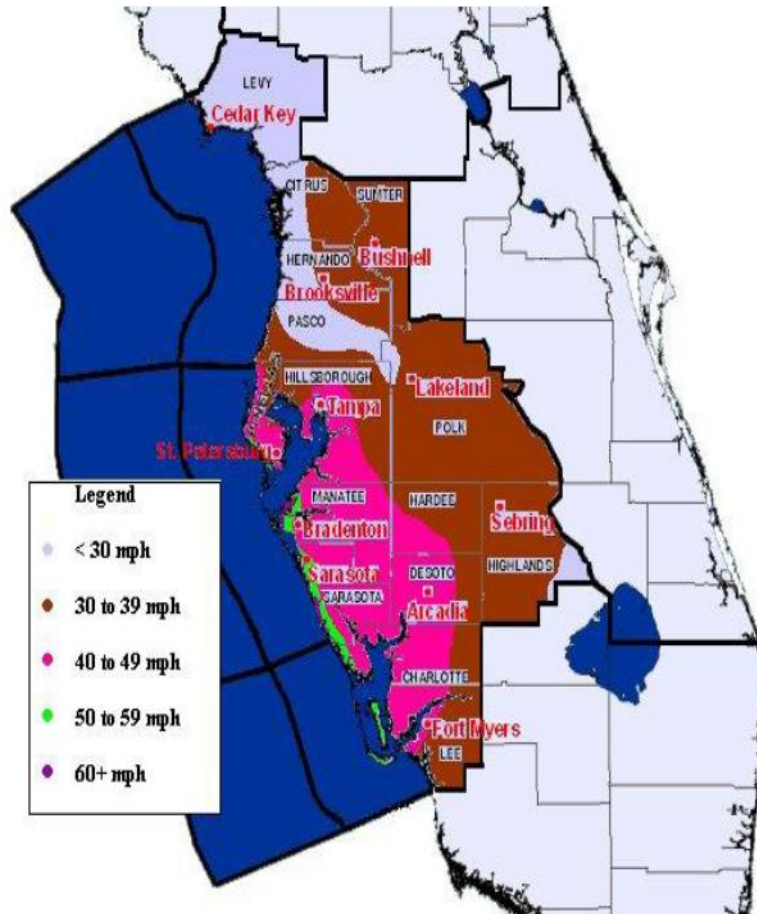


**Figure 3.** Rainfall totals from Gabrielle, beginning the afternoon of September 13, 2001 and ending in the early morning of September 15, 2001.

# NOAA AND THE PRESERVE AMERICA



*Initiative*



**Figure 4.** Peak sustained winds during Tropical Storm Gabrielle.

**Links for more information:**

<http://www.aoml.noaa.gov/general/lib/lib1/nhclib/mwreviews/2001.pdf>

<http://www.srh.noaa.gov/images/tbw/2003/TropicalStormGabrielle.pdf>

**Acknowledgements:** The National Weather Service, Tampa Bay Area.