



NOAA - National Weather Service

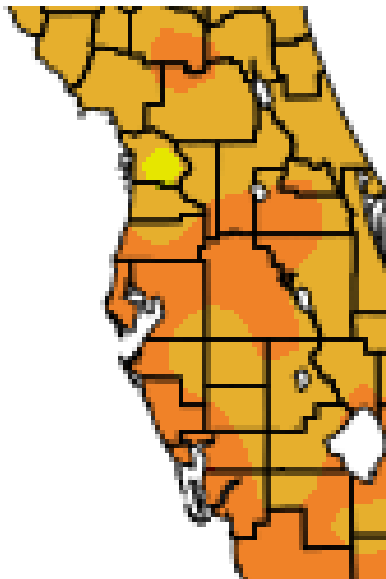
Tampa Bay Area

2525 14th Avenue SE, Ruskin, Florida 33570

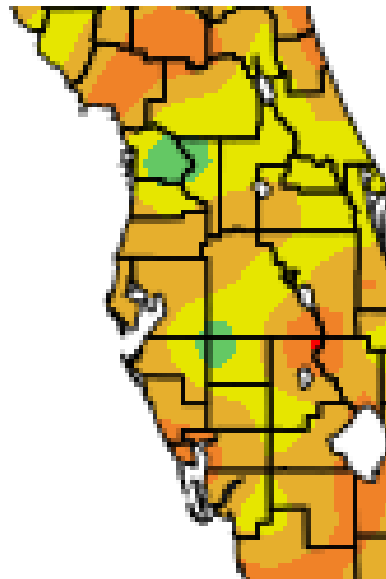
813-645-2323 <http://weather.gov/tampabay>

June 2018 Preliminary Top Ten Climate Data for West Central and Southwest Florida

Temperatures across West Central and Southwest Florida have ranged from about 1 degree below to 2.5 degrees above average for June 2018 and could place a few locations in the Top Ten Warmest for June.



June 2018 Avg Temperature



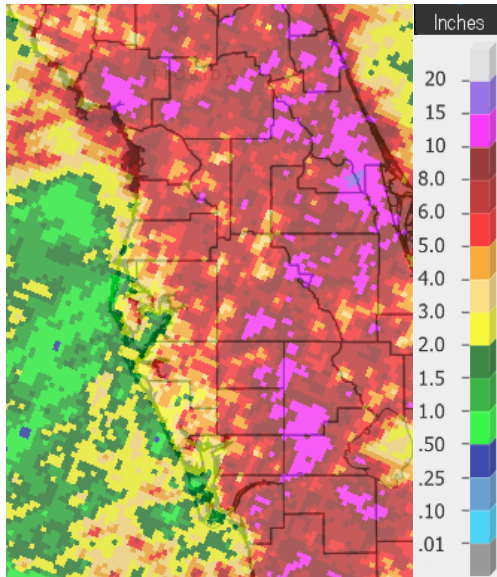
June 2018 Temp Dep fm Avg

JUNE TEMPERATURE through the 27th (deg F):

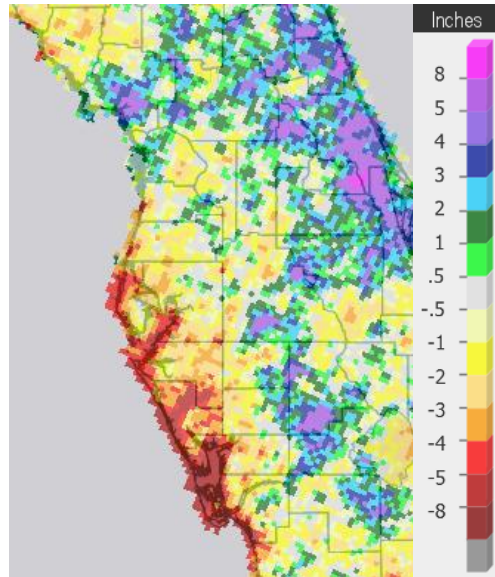
Top Ten Warmest

Location	So Far June 2018 Rank	So Far June 2018 Avg Temp	Normal June Temp	Departure fm Normal
Punta Gorda Area	2nd(tie)	83.8	81.8	+2.0
Tampa Area	3rd	83.8	82.2	+1.6
Plant City	3rd(tie)	83.2	80.7	+2.5
Sarasota-Bradenton Area	4th	82.2	80.8	+1.4
Tarpon Springs	5th	83.4	80.8	+2.6
Venice	6th(tie)	82.8	80.9	+1.9
Chiefland 5 ESE	6th	81.2	78.8	+2.4
Lakeland	9th(tie)	83.0	80.8	+2.2
Winter Haven Area	9th	82.9	82.0	+0.9
St Petersburg Area	10th	83.9	82.7	+1.2

As for rainfall, we've seen numerous days with westerly flow this June and this has caused much of the rain to fall over the interior and eastern half of the Florida peninsula. Across much of our area, especially close to the coast, rainfall has been lacking in June and below normal in all but portions of Levy and Citrus counties.



June 2018 Rainfall



June 2018 Rainfall Dep fm Avg

JUNE RAINFALL through the 27th (inches):

Top Ten Driest

Location	So Far June 2018 Rank	June 2018 Rainfall	Normal June Rain	Departure fm Normal
Venice	4th	1.17	7.50	-6.33
Punta Gorda 4 ESE	4th	3.01	8.92	-5.91
Winter Haven Area	7th(tie)	3.50	7.71	-4.21
Tampa Area	9th	2.18	6.68	-4.50

Following are tables of the Top Ten Warmest, Coolest, Driest, and Wettest Junes at some official NWS locations, which include the average/total so far for this June where available, and the 1981-2010 Normal (average) temperature and rainfall for the month of June.

Chiefland 5 ESE (Records Began July 1956):

Warmest Junes	Coolest Junes	Wettest Junes	Driest Junes
1 82.6 in 1998	1 77.0 in 1965	1 15.06 in 2003	1 1.00 in 1998
2 82.3 in 2016	2 77.1 in 1974	2 14.12 in 2012	2 1.27 in 1977
3 82.1 in 2015	77.1 in 1966	3 13.11 in 1974	3 1.97 in 1971
4 81.7 in 1989	4 77.4 in 1963	4 12.90 in 1965	4 2.33 in 1991
5 81.3 in 1985	5 77.7 in 1997	5 11.98 in 2002	5 3.10 in 1963
6 81.0 in 2011	77.7 in 1984	6 11.84 in 2009	6 3.27 in 1979
81.0 in 1977	7 77.9 in 2006	7 11.64 in 1983	7 3.48 in 1968
8 80.9 in 2010	77.9 in 1962	8 11.49 in 2016	8 3.51 in 2008
80.9 in 1986	9 78.0 in 1995	9 11.35 in 1995	9 3.63 in 2010
10 80.7 in 1958	10 78.1 in 1961	10 9.98 in 1989	10 3.70 in 1958

Avg Temp thru June 27, 2018 = 81.2°
 Normal June Temp at CHIF1 = 78.8°

Rain Total thru June 27, 2018 = 9.43 in.
 Normal June Rain at CHIF1 = 7.72 in.

Inverness 3 SE (Records Began July 1948):

Warmest Junes	Coolest Junes	Wettest Junes	Driest Junes
1 83.6 in 1981	1 77.7 in 1995	1 21.84 in 2003	1 1.69 in 1977
2 83.5 in 2010	2 78.1 in 1976	2 17.44 in 1974	2 1.95 in 1981
3 83.4 in 1998	3 78.2 in 1997	3 15.45 in 1982	3 2.07 in 1998
4 82.9 in 1969	4 78.4 in 2003	4 14.88 in 2012	4 2.73 in 1954
82.9 in 1952	5 78.6 in 1966	5 13.13 in 1989	5 2.93 in 2010
6 82.7 in 1950	6 78.9 in 1991	6 12.19 in 1985	6 3.14 in 1964
7 82.5 in 2016	78.9 in 1955	7 12.06 in 1960	7 3.31 in 2015
82.5 in 1958	8 79.0 in 2012	8 12.04 in 1965	8 3.70 in 1963
9 82.4 in 2015	9 79.0 in 1994	9 11.66 in 2009	9 3.80 in 1987
82.4 in 2011	10 79.2 in 2017	10 10.94 in 2016	10 3.91 in 1979
82.4 in 1977			

Avg Temp thru June 27, 2018 = 79.6°
 Normal June Temp at INVF1 = 80.4°

Rain Total thru June 27, 2018 = 4.74 in.
 Normal June Rain at INVF1 = 8.30 in.

Bushnell 1 E (Records Began July 1948) :

Warmest Junes	Coollest Junes	Wettest Junes	Driest Junes
1 84.0 in 1998	1 74.7 in 1983	1 18.09 in 2012	1 0.66 in 1998
2 82.5 in 1981	2 76.5 in 1966	2 16.85 in 1974	2 1.84 in 1954
3 82.0 in 1952	3 77.0 in 1984	3 15.24 in 2002	3 1.97 in 1956
4 81.8 in 1969	4 77.8 in 2012	4 14.86 in 1990	4 1.98 in 1977
5 81.5 in 1977	77.8 in 1955	5 12.39 in 1989	5 2.52 in 1979
6 81.4 in 1982	6 77.9 in 1965	6 11.69 in 1966	6 2.64 in 1950
7 81.3 in 1985	7 78.1 in 1976	7 11.62 in 2013	7 2.87 in 1978
8 81.1 in 2016	8 78.5 in 1974	8 11.43 in 1982	8 3.00 in 2006
9 80.9 in 1987	9 78.7 in 2014	9 10.85 in 1949	9 3.01 in 1958
10 80.8 in 2000	10 78.8 in 1988	10 10.72 in 2005	10 3.03 in 1970
80.8 in 1964	78.8 in 1980		
	78.8 in 1967		
	78.8 in 1960		

Avg Temp for June 2018 = Not Avbl
Normal June Temp at BSHF1 = 80.4°

Rain Total for June 2018 = Not Avbl
Normal June Rain at BSHF1 = 6.18 in.

Brooksville Area (Records Began January 1892) :

Warmest Junes	Coollest Junes	Wettest Junes	Driest Junes
1 84.2 in 1927	1 76.6 in 1917	1 21.68 in 2012	1 0.67 in 1998
2 82.7 in 1998	2 77.1 in 1920	2 20.81 in 1945	2 0.91 in 1979
3 82.2 in 1909	77.1 in 1894	3 19.29 in 2003	3 2.27 in 1977
82.2 in 1899	4 77.6 in 1966	4 14.64 in 2013	4 2.56 in 1956
5 82.1 in 1964	5 77.9 in 1910	5 14.37 in 1974	5 2.68 in 1988
82.1 in 1914	6 78.1 in 1946	6 14.29 in 1982	2.68 in 1931
7 81.9 in 2010	78.1 in 1930	7 14.19 in 1893	7 3.05 in 1933
81.9 in 1935	8 78.3 in 1976	8 13.94 in 1912	8 3.11 in 1954
9 81.7 in 1950	78.3 in 1965	9 13.89 in 1934	9 3.63 in 1918
81.7 in 1944	78.3 in 1919	10 13.69 in 1929	10 3.86 in 2011

Avg Temp thru June 27, 2018 = 81.0°
Normal June Temp at BKV = 80.0°

Rain Total thru June 27, 2018 = 4.55 in.
Normal June Rain at BKV = 7.65 in.

St. Leo (Records Began April 1895):

Warmest Junes	Coollest Junes	Wettest Junes	Driest Junes
1 86.4 in 1998	1 75.9 in 1930	1 24.26 in 1934	1 0.08 in 1998
2 83.3 in 1981	2 77.1 in 1920	2 20.30 in 2012	2 1.60 in 1973
3 83.1 in 1952	3 77.3 in 1919	3 19.08 in 1974	3 2.14 in 1979
4 82.9 in 1897	4 77.7 in 1966	4 18.00 in 1896	4 2.33 in 1967
5 82.8 in 1948	77.7 in 1923	5 17.25 in 1943	5 2.68 in 1948
6 82.7 in 1899	6 78.1 in 2012	6 16.90 in 1945	6 2.95 in 1951
7 82.6 in 2009	78.1 in 1933	7 16.31 in 2005	7 3.02 in 1958
82.6 in 2004	8 78.3 in 1922	8 14.70 in 1999	8 3.16 in 1895
82.6 in 1898	78.3 in 1916	9 14.35 in 2002	9 3.28 in 1980
10 82.4 in 1985	78.3 in 1903	10 13.91 in 1910	10 3.62 in 1915
82.4 in 1950			

Avg Temp for June 2018 = Not Avbl
Normal June Temp at STLf1 = 81.6°

Rain Total for June 2018 = Not Avbl
Normal June Rain at STLf1 = 7.77 in.

Tarpon Springs (Records Began January 1892):

Warmest Junes	Coollest Junes	Wettest Junes	Driest Junes
1 84.6 in 2004	1 77.2 in 1894	1 21.73 in 2012	1 0.62 in 1991
2 84.2 in 1998	2 77.9 in 1907	2 18.29 in 1974	2 0.72 in 1998
3 83.9 in 2010	77.9 in 1900	3 18.10 in 1909	3 1.17 in 1935
4 83.6 in 2005	4 78.1 in 1939	4 14.08 in 1934	4 1.47 in 1955
5 83.3 in 1994	78.1 in 1908	5 13.47 in 1900	5 1.49 in 1950
6 83.2 in 2016	6 78.3 in 1892	6 13.21 in 1912	6 1.56 in 1947
83.2 in 1927	7 78.4 in 1974	7 12.71 in 1943	7 1.63 in 1980
8 83.1 in 1952	78.4 in 1955	8 12.12 in 1957	8 1.70 in 1931
9 82.9 in 1950	78.4 in 1910	9 11.69 in 2001	9 1.73 in 1979
10 82.8 in 1992	78.4 in 1895	10 11.47 in 1982	10 1.83 in 1971 1.83 in 1921

Avg Temp thru June 27, 2018 = 83.4°
Normal June Temp at TRPF1 = 80.8°

Rain Total thru June 27, 2018 = 3.48 in.
Normal June Rain at TRPF1 = 6.69 in.

Tampa Area (Records Began April 1890):

Warmest Junes	Coollest Junes	Wettest Junes	Driest Junes
1 85.6 in 1998	1 78.5 in 1930	1 18.66 in 2012	1 1.26 in 1918
2 84.8 in 2010	2 78.6 in 1955	2 18.52 in 1945	2 1.46 in 1997
3 83.7 in 1985	3 78.9 in 1976	3 15.92 in 1934	3 1.47 in 1931
83.7 in 1977	78.9 in 1913	4 13.75 in 1974	4 1.77 in 2014
5 83.6 in 2011	78.9 in 1892	5 13.47 in 1912	5 1.86 in 1951
6 83.3 in 2008	6 79.1 in 1966	6 13.42 in 1896	6 2.03 in 1978
7 83.2 in 2004	7 79.2 in 1923	7 13.19 in 2003	7 2.05 in 1970
8 83.1 in 2016	79.2 in 1910	8 12.54 in 1943	8 2.07 in 1979
83.1 in 1952	79.2 in 1903	9 12.41 in 1892	9 2.41 in 1922
83.1 in 1944	10 79.3 in 1916	10 12.26 in 2005	10 2.54 in 1971
	79.3 in 1908		
	79.3 in 1894		

Avg Temp thru June 27, 2018 = 83.8°
Normal June Temp at TPA = 82.2°

Rain Total thru June 27, 2018 = 2.18 in.
Normal June Rain at TPA = 6.68 in.

St Petersburg (Records Began August 1914):

Warmest Junes	Coollest Junes	Wettest Junes	Driest Junes
1 86.5 in 2010	1 79.1 in 1955	1 23.00 in 1974	1 0.90 in 1979
2 84.9 in 1998	2 79.6 in 1930	2 16.88 in 1943	2 1.03 in 1948
3 84.6 in 2004	3 80.0 in 1974	3 16.60 in 1995	3 1.26 in 1931
4 84.5 in 1977	4 80.3 in 1923	4 14.80 in 2016	4 2.05 in 1973
5 84.3 in 1973	80.3 in 1920	5 12.99 in 2003	5 2.21 in 1993
6 84.2 in 1969	6 80.4 in 1976	6 12.95 in 2012	6 2.35 in 1949
7 84.1 in 1987	80.4 in 1922	7 12.29 in 1939	7 2.36 in 2004
84.1 in 1981	80.4 in 1916	8 12.12 in 1945	8 2.56 in 1977
9 84.0 in 1944	9 80.5 in 1995	9 11.63 in 1968	9 2.63 in 1980
10 83.7 in 1994	80.5 in 1968	10 11.02 in 1990	10 2.73 in 1916
83.7 in 1964	80.5 in 1966		
	80.5 in 1956		
	80.5 in 1949		

Avg Temp thru June 27, 2018 = 83.9°
Normal June Temp at SPG = 82.7°

Rain Total thru June 27, 2018 = 5.81 in.
Normal June Rain at SPG = 6.38 in.

Plant City (Records Began February 1893):

Warmest Junes	Coollest Junes	Wettest Junes	Driest Junes
1 83.8 in 1998	1 76.4 in 1933	1 17.08 in 1968	1 0.56 in 1979
2 83.4 in 2010	2 76.5 in 1930	2 17.01 in 2017	2 1.09 in 1948
3 83.2 in 2017	3 77.1 in 1931	3 16.48 in 1943	3 1.50 in 1961
83.2 in 2016	4 77.6 in 1976	4 16.44 in 1896	4 1.72 in 1931
83.2 in 1981	5 77.9 in 1936	5 16.37 in 1945	5 1.95 in 1998
6 82.9 in 1911	6 78.0 in 1966	6 16.24 in 1986	6 2.50 in 1993
7 82.6 in 1915	7 78.1 in 1938	7 15.44 in 2013	7 2.65 in 1956
8 82.5 in 1985	78.1 in 1932	8 15.34 in 1992	8 3.08 in 1898
9 82.2 in 2015	78.1 in 1925	9 14.98 in 2012	9 3.44 in 1950
82.2 in 2011	10 78.2 in 1929	10 14.93 in 1934	10 3.53 in 1973
82.2 in 1969	78.2 in 1907		3.53 in 1895
82.2 in 1914			

Avg Temp thru June 27, 2018 = 83.2°
Normal June Temp at PLCF1 = 80.7°

Rain Total thru June 27, 2018 = 8.38 in.
Normal June Rain at PLCF1 = 8.62 in.

Lakeland (Records Began January 1915):

Warmest Junes	Coollest Junes	Wettest Junes	Driest Junes
1 84.8 in 2010	1 76.8 in 1930	1 15.55 in 2012	1 1.86 in 1998
2 84.5 in 1998	2 77.8 in 1966	2 14.86 in 1968	2 1.87 in 1948
3 83.5 in 1985	77.8 in 1929	3 14.63 in 1934	3 2.22 in 1915
4 83.4 in 2015	4 78.2 in 1919	4 14.48 in 2005	4 2.54 in 1931
5 83.3 in 1987	5 78.3 in 2007	5 14.00 in 1939	5 2.97 in 1971
83.3 in 1981	78.3 in 1920	6 13.55 in 1974	6 3.06 in 1979
83.3 in 1977	7 78.4 in 1968	7 13.12 in 1930	7 3.18 in 2010
8 83.1 in 2016	8 78.5 in 1965	8 13.10 in 2013	8 3.31 in 1970
9 83.0 in 1990	9 79.0 in 1976	9 13.09 in 1992	9 3.37 in 1952
83.0 in 1989	10 79.2 in 1974	10 13.04 in 2017	10 3.47 in 1955
	79.2 in 1923		3.47 in 1918
	79.2 in 1921		

Avg Temp thru June 27, 2018 = 83.0°
Normal June Temp at LLDF1 = 80.8°

Rain Total thru June 27, 2018 = 9.20 in.
Normal June Rain at LLDF1 = 8.02 in.

Winter Haven Area (Records Began March 1941) :

Warmest Junes	Coollest Junes	Wettest Junes	Driest Junes
1 84.9 in 2010	1 77.6 in 1968	1 16.44 in 1992	1 0.86 in 1998
2 84.2 in 1985	2 78.5 in 1976	2 15.04 in 1968	2 2.49 in 1993
3 84.0 in 1989	3 78.6 in 1974	3 14.46 in 1945	3 2.62 in 1973
4 83.7 in 2004	78.6 in 1971	4 13.75 in 2015	4 2.72 in 1957
5 83.6 in 2015	5 78.9 in 1972	5 13.67 in 2012	5 3.38 in 2000
83.6 in 1952	6 79.0 in 1966	6 13.07 in 1974	6 3.41 in 1963
7 83.4 in 2016	7 79.2 in 1980	7 12.50 in 2005	7 3.50 in 2007
83.4 in 2011	79.2 in 1965	8 12.08 in 2013	8 3.52 in 1979
9 82.7 in 1950	9 79.4 in 1960	9 11.87 in 1994	9 3.58 in 1952
10 82.6 in 1969	10 79.5 in 1967	10 11.25 in 2017	10 3.70 in 1970
82.6 in 1944	79.5 in 1962		

Avg Temp thru June 27, 2018 = 82.9°
Normal June Temp at GIF = 82.0°

Rain Total thru June 27, 2018 = 3.50 in.
Normal June Rain at GIF = 7.71 in.

Bartow (Records Began January 1892) :

Warmest Junes	Coollest Junes	Wettest Junes	Driest Junes
1 85.9 in 1998	1 77.4 in 1894	1 21.62 in 1913	1 0.73 in 1964
2 85.7 in 2015	2 77.7 in 1913	2 17.76 in 1934	2 0.79 in 1998
3 84.0 in 2014	3 77.9 in 1936	3 16.97 in 2005	3 1.41 in 1948
4 83.9 in 2010	4 78.1 in 1892	4 16.32 in 2003	4 2.12 in 1931
5 83.7 in 1927	5 78.4 in 1930	5 15.78 in 1939	5 2.41 in 1973
6 83.4 in 1969	6 78.6 in 1966	6 15.03 in 1945	6 2.59 in 1905
83.4 in 1944	7 78.7 in 1938	7 15.00 in 1949	7 3.09 in 1993
8 83.3 in 2013	8 78.8 in 1919	8 14.39 in 1894	8 3.22 in 1950
9 83.2 in 1981	78.8 in 1912	9 14.35 in 1942	9 3.52 in 1980
10 83.1 in 2009	10 79.0 in 1972	10 13.74 in 1953	10 3.64 in 1911
	79.0 in 1916		

Avg Temp thru June 25, 2018 = 81.7°
Normal June Temp at BARF1 = 81.9°

Rain Total thru June 25, 2018 = 7.83 in.
Normal June Rain at BARF1 = 7.24 in.

Sarasota-Bradenton Area (Records Began January 1911):

Warmest Junes	Coollest Junes	Wettest Junes	Driest Junes
1 83.9 in 1998	1 76.4 in 1913	1 25.60 in 1912	1 0.64 in 1998
2 83.5 in 2010	2 77.5 in 1930	2 23.30 in 1943	2 1.20 in 2011
3 83.4 in 2016	3 77.8 in 1976	3 22.34 in 1992	3 1.28 in 1918
4 82.1 in 1950	4 78.0 in 1916	4 15.45 in 2012	4 1.30 in 2007
5 81.9 in 2013	5 78.1 in 1955	5 13.49 in 1945	5 1.46 in 1956
81.9 in 2009	6 78.2 in 1933	6 13.39 in 1968	6 1.58 in 1951
7 81.8 in 1994	7 78.3 in 1956	7 12.40 in 1974	7 1.68 in 1926
81.8 in 1993	78.3 in 1931	8 12.27 in 1976	8 1.69 in 1948
81.8 in 1985	9 78.5 in 1947	9 12.08 in 1957	9 2.44 in 1931
81.8 in 1981	78.5 in 1920	10 11.75 in 1996	10 2.51 in 2004

Avg Temp thru June 27, 2018 = 82.2°
Normal June Temp at SRQ = 80.8°

Rain Total thru June 27, 2018 = 3.46 in.
Normal June Rain at SRQ = 7.51 in.

**Myakka River State Park (Temperature Records Began March 1956/
Rainfall Records Began September 1943):**

Warmest Junes	Coollest Junes	Wettest Junes	Driest Junes
1 85.2 in 1998	1 78.1 in 1962	1 26.16 in 1992	1 1.75 in 2007
2 84.4 in 2010	2 78.4 in 1968	2 22.74 in 2003	2 1.76 in 2011
3 82.5 in 1994	3 78.5 in 1976	3 20.94 in 2017	3 2.49 in 1980
4 82.3 in 1981	4 78.6 in 1984	4 20.03 in 1974	4 2.87 in 1984
5 82.1 in 2015	78.6 in 1960	5 19.92 in 2012	2.87 in 1948
82.1 in 1985	6 78.9 in 1974	6 17.03 in 1995	6 3.07 in 1979
7 82.0 in 2011	7 79.2 in 1961	7 16.60 in 1968	7 3.20 in 1988
8 81.9 in 2016	79.2 in 1959	8 16.53 in 2005	8 3.53 in 1955
9 81.8 in 1997	9 79.4 in 1986	9 15.84 in 2013	9 3.55 in 1956
10 81.7 in 2017	79.4 in 1963	10 15.77 in 1981	10 3.74 in 1958
81.7 in 1999			

Avg Temp for June 2018 = Not Avbl
Normal June Temp at MKCF1 = 80.9°

Rain Total for June 2018 = Not Avbl
Normal June Rain at MKCF1 = 9.65 in.

Venice (Records Began May 1955):

Warmest Junes	Coollest Junes	Wettest Junes	Driest Junes
1 86.4 in 2010	1 78.6 in 1955	1 25.91 in 1992	1 1.04 in 1980
2 85.7 in 1998	2 78.7 in 1966	2 19.31 in 2003	1.04 in 1979
3 83.9 in 2004	3 79.0 in 1988	3 19.18 in 2005	3 1.06 in 1988
4 83.7 in 2011	79.0 in 1984	4 16.78 in 2012	4 1.33 in 1990
5 83.0 in 2009	5 79.3 in 1974	5 14.16 in 1995	5 1.38 in 1960
6 82.8 in 2013	79.3 in 1961	6 12.59 in 1962	6 1.57 in 2011
7 82.6 in 1994	79.3 in 1960	7 11.93 in 1974	7 2.01 in 1961
8 82.5 in 2003	8 79.6 in 1975	8 11.50 in 1982	8 2.43 in 1985
9 82.2 in 2012	79.6 in 1967	9 11.17 in 1968	9 2.45 in 1955
10 82.1 in 1997	79.6 in 1956	10 10.76 in 2001	10 2.46 in 1971

Avg Temp thru June 27, 2018 = 82.8°
Normal June Temp at VNCF1 = 80.9°

Rain Total thru June 27, 2018 = 1.17 in.
Normal June Rain at VNCF1 = 7.50 in.

Wauchula 2 N (Records Began January 1933):

Warmest Junes	Coollest Junes	Wettest Junes	Driest Junes
1 83.9 in 2009	1 78.0 in 1955	1 19.40 in 1939	1 1.69 in 1998
2 83.4 in 1998	2 78.1 in 2012	2 17.61 in 2017	2 2.40 in 1952
3 82.9 in 2008	78.1 in 1996	3 16.20 in 2005	3 3.02 in 1948
4 82.6 in 1993	78.1 in 1976	4 16.03 in 1952	4 3.18 in 2000
82.6 in 1985	5 78.2 in 1994	5 15.96 in 1982	5 3.26 in 1964
82.6 in 1969	6 78.9 in 1999	6 15.85 in 1968	6 3.48 in 1958
7 82.2 in 1987	78.9 in 1966	7 15.24 in 1945	7 3.53 in 2010
82.2 in 1981	78.9 in 1956	8 15.11 in 1913	8 3.69 in 1956
9 82.1 in 2010	9 79.0 in 1965	9 14.97 in 1974	9 3.72 in 1960
10 81.9 in 1990	10 79.1 in 2014	10 14.77 in 1962	10 3.82 in 1984
	79.1 in 2007		

Avg Temp thru June 22, 2018 = 80.9°
Normal June Temp at WAUF1 = 82.1°

Rain Total thru June 22, 2018 = 1.51 in.
Normal June Rain at WAUF1 = 8.07 in.

Arcadia (Records Began November 1899) :

Warmest Junes	Coollest Junes	Wettest Junes	Driest Junes
1 83.6 in 1998	1 76.4 in 1917	1 23.70 in 1982	1 2.55 in 1931
2 83.2 in 1927	2 77.8 in 1989	2 20.19 in 1939	2 2.88 in 1956
3 82.9 in 1981	3 77.9 in 1955	3 18.73 in 1947	3 3.07 in 1921
4 82.7 in 2010	4 78.0 in 1990	4 18.26 in 2002	4 3.10 in 1952
5 82.4 in 1952	5 78.1 in 1996	5 18.24 in 1942	5 3.36 in 1932
6 81.8 in 1950	6 78.2 in 1976	6 17.40 in 1962	6 3.56 in 1948
7 81.6 in 1902	78.2 in 1971	7 16.59 in 1912	7 3.80 in 1987
8 81.5 in 1985	78.2 in 1968	8 16.30 in 1946	8 3.98 in 1905
81.5 in 1945	9 78.3 in 1966	9 16.02 in 2012	9 4.02 in 2006
81.5 in 1944	78.3 in 1936	10 15.93 in 1992	10 4.04 in 1957
81.5 in 1911	78.3 in 1933		
81.5 in 1901			

Avg Temp thru June 27, 2018 = 81.1°
Normal June Temp at ARCF1 = 80.2°

Rain Total thru June 27, 2018 = 5.70 in.
Normal June Rain at ARCF1 = 9.10 in

Archbold Bio Stn (Records Began January 1969) :

Warmest Junes	Coollest Junes	Wettest Junes	Driest Junes
1 83.5 in 2010	1 77.1 in 1984	1 18.66 in 2002	1 0.90 in 1998
2 82.2 in 1998	2 77.4 in 1976	2 17.33 in 2013	2 1.70 in 1979
3 81.9 in 2017	3 78.1 in 1999	3 15.85 in 1986	3 2.40 in 1980
4 81.6 in 2016	4 78.2 in 2007	4 15.77 in 1992	4 2.79 in 2010
5 81.4 in 1981	78.2 in 1971	5 14.12 in 1974	5 3.01 in 1988
6 81.2 in 1985	6 78.4 in 1970	6 13.89 in 2005	6 3.27 in 1987
7 81.1 in 2015	7 78.5 in 1996	7 12.73 in 2015	7 3.76 in 2000
8 81.0 in 1987	8 78.7 in 1974	8 12.21 in 1969	8 4.79 in 2006
9 80.8 in 2004	9 78.8 in 1983	9 11.35 in 1994	9 4.89 in 1989
10 80.7 in 1991	78.8 in 1973	10 11.14 in 1982	10 4.89 in 2014

Avg Temp thru June 2018 = Not Avbl
Normal June Temp at ACHF1 = 79.5°

Rain Total thru June 2018 = Not Avbl
Normal June Rain at ACHF1 = 8.20 in

Punta Gorda Area (Records Began June 1914) :

Warmest Junes	Coollest Junes	Wettest Junes	Driest Junes
1 84.1 in 1998	1 78.3 in 1930	1 23.99 in 1974	1 2.00 in 1979
2 83.8 in 2010	2 78.9 in 1938	2 20.29 in 1939	2 2.16 in 1960
3 83.3 in 1948	3 79.1 in 1976	3 19.75 in 1992	3 2.30 in 1920
4 83.1 in 1985	79.1 in 1929	4 17.63 in 1995	4 3.06 in 1924
83.1 in 1951	5 79.2 in 1936	5 16.66 in 2003	5 3.08 in 1927
6 83.0 in 2016	6 79.3 in 1971	6 16.51 in 1999	6 3.37 in 1964
83.0 in 1945	79.3 in 1955	7 15.93 in 1943	7 3.48 in 2007
8 82.9 in 1994	8 79.5 in 1968	8 15.92 in 1949	3.48 in 1977
9 82.7 in 1982	79.5 in 1967	9 15.39 in 1946	3.48 in 1916
82.7 in 1981	79.5 in 1923	10 14.81 in 2017	10 4.12 in 1952

Avg Temp thru June 27, 2018 = 83.8°
Normal June Temp at PNTF1 = 81.8°

Rain Total thru June 27, 2018 = 3.01 in.
Normal June Rain at PNTF1 = 8.92 in.

Fort Myers Area (Records Began January 1902) :

Warmest Junes	Coollest Junes	Wettest Junes	Driest Junes
1 85.9 in 1981	1 78.5 in 1908	1 27.61 in 1912	1 1.99 in 1980
2 85.3 in 2010	2 78.6 in 1904	2 20.25 in 1936	2 2.48 in 2014
3 84.5 in 1998	3 78.7 in 1930	3 20.10 in 1974	3 3.59 in 1932
4 84.0 in 1997	78.7 in 1910	4 18.73 in 1992	4 3.73 in 1944
5 83.8 in 1994	5 78.8 in 1976	5 18.42 in 2005	5 3.76 in 1985
6 83.7 in 1985	6 78.9 in 1955	6 17.92 in 1983	3.76 in 1913
83.7 in 1982	7 79.0 in 1912	7 16.43 in 1939	7 3.96 in 1931
8 83.4 in 1980	79.0 in 1903	8 16.10 in 1959	8 3.99 in 1973
9 83.2 in 2009	9 79.2 in 1917	9 16.06 in 1943	9 4.52 in 2001
83.2 in 1944	10 79.3 in 1918	10 15.11 in 1922	10 4.58 in 1964
	79.3 in 1913		

Several Days Missing in June 2018
Normal June Temp at FMY = 82.5°

Rain Total thru June 27, 2018 = 6.50 in.
Normal June Rain at FMY = 10.09 in.

For more Climate information visit our web site at the following link:
<http://www.weather.gov/tampabay> and then go to the Climate and Past Weather
drop down menu above the graphical forecast images.