



NOAA - National Weather Service

Tampa Bay Area

2525 14th Avenue SE, Ruskin, Florida 33570

813-645-2323 <https://weather.gov/tampabay>

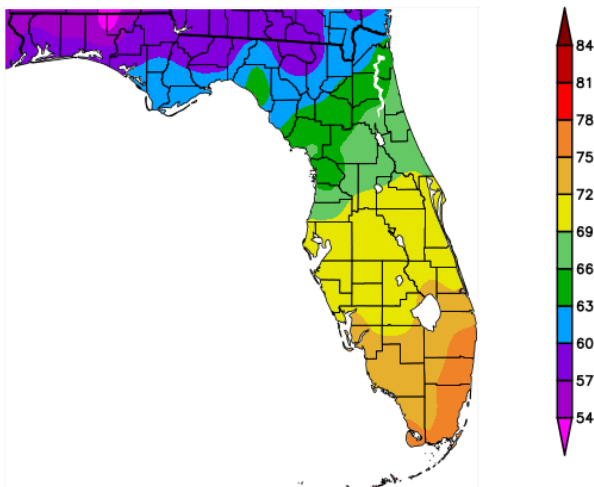
November and Autumn (Sep/Oct/Nov) 2018 Climate Summary

November 2018 ended up above normal at most locations and if not for few cool downs, especially the one near the end of the month, we would have had a record warm November at some sites.

NOVEMBER TEMPERATURE (°F):

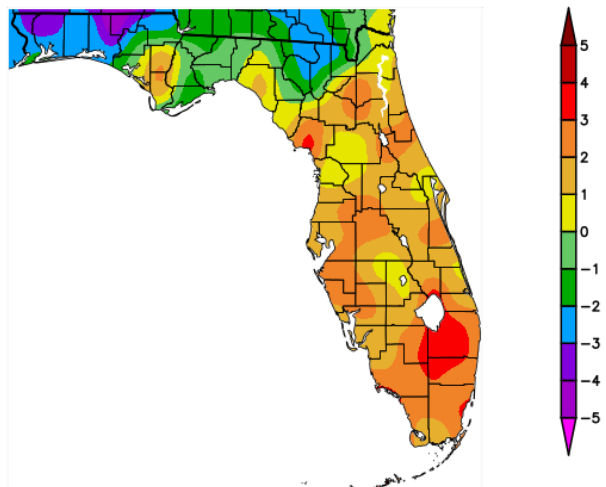
Location	Nov 2018 Rank	Nov 2018 Avg Temp	Normal Nov Temperature	Dep fm Normal	Records Began
Winter Haven Area	10th(tie)	71.9°	69.0°	+2.9°	1941
Plant City	10th	71.2°	68.2°	+3.0°	1892
Sarasota-Bradenton Area	11th(tie)	71.8°	69.2°	+2.6°	1911
Archbold Bio Stn	12th	70.4°	68.1°	+2.3°	1969
Venice	13th(tie)	71.2°	69.3°	+1.9°	1955
Myakka River St Pk	13th	70.7°	69.1°	+1.6°	1956
Chiefland 5 ESE	13th(tie)	65.4°	62.8°	+2.7°	1956
Lakeland Area	14th(tie)	70.8°	68.2°	+2.6°	1915
Fort Myers-Page Field	17th	73.1°	71.7°	+1.4°	1902
Tampa Area	19th(tie)	70.7°	69.1°	+1.6°	1890
Wauchula 2 N	20th(tie)	70.1°	69.5°	+0.6°	1933
St Petersburg Area	21st(tie)	71.5°	70.1°	+1.4°	1914
Arcadia	21st	70.4°	68.1°	+2.3°	1899
Punta Gorda Area	23rd	71.5°	69.9°	+1.6°	1914
Bartow	25th(tie)	70.0°	69.2°	+0.8°	1892
Tarpon Springs	29th(tie)	69.4°	67.8°	+1.6°	1892
St Leo	32nd(tie)	68.2°	68.6°	-0.4°	1895
Inverness 3 SE	35th(tie)	64.9°	65.3°	-0.4°	1948
Brooksville Area	50th(tie)	66.7°	65.0°	+1.7°	1892

Temperature (F)
11/1/2018 - 11/30/2018



Avg Temperature Nov 2018

Departure from Normal Temperature (F)
11/1/2018 - 11/30/2018



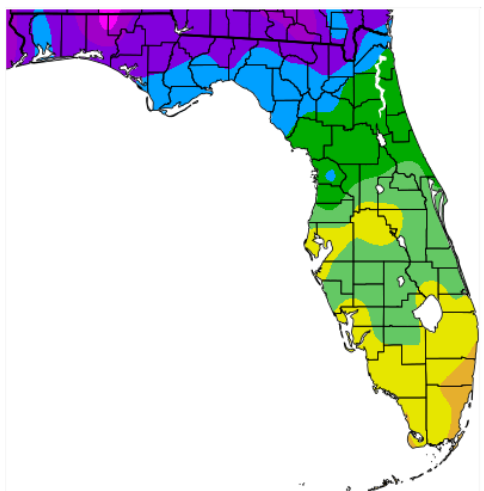
Departure from Normal

As for Autumn 2018 (Sep/Oct/Nov), it ended up being one of the warmest on record at a couple of sites, with most others still in the Top Ten.

AUTUMN (SEPTEMBER/OCTOBER/NOVEMBER) TEMPERATURE (°F) :

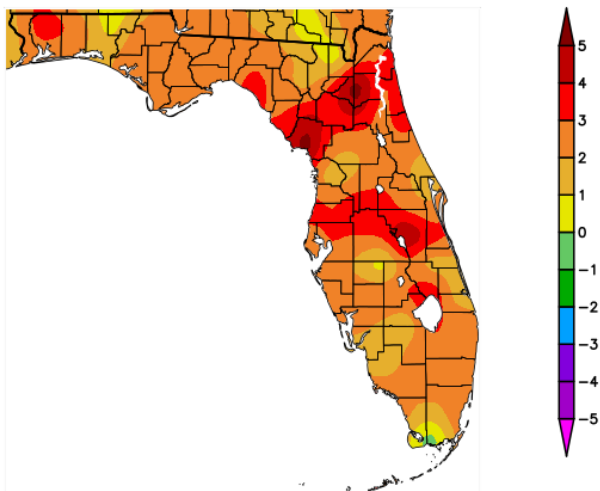
Location	Autumn 2018		Normal Autumn Temperature	Dep fm Normal	Records Began
	Rank	Avg Temp			
Winter Haven Area	1st	79.1°	75.4°	+3.7°	1941
Plant City	1st	78.4°	74.5°	+3.9°	1892
Chiefland 5 ESE	1st	75.2°	70.4°	+4.8°	1956
Tampa Area	2nd	78.9°	75.7°	+3.2°	1890
Myakka River St Pk	3rd	78.0°	75.3°	+2.7°	1956
Bartow	3rd	77.1°	75.5°	+1.6°	1892
Archbold Bio Stn	3rd	76.6°	74.1°	+2.5°	1969
Punta Gorda Area	4th(tie)	78.7°	76.2°	+2.5°	1914
Lakeland Area	4th	78.0°	74.5°	+3.5°	1915
Sarasota-Bradenton Area	4th	77.8°	75.6°	+2.2°	1911
Venice	4th(tie)	77.8°	75.3°	+2.5°	1955
Tarpon Springs	4th	77.6°	74.2°	+3.4°	1892
St Petersburg Area	5th	79.0°	76.5°	+2.5°	1914
Fort Myers-Page Field	6th(tie)	78.5°	77.3°	+1.2°	1902
Arcadia	6th	76.9°	74.4°	+2.5°	1899
Wauchula 2 N	6th	76.9°	76.1°	+0.8°	1933
St Leo	9th(tie)	75.8°	75.0°	+0.8°	1895
Brooksville Area	9th(tie)	75.2°	72.4°	+2.8°	1892
Inverness 3 SE	13th	73.7°	72.6°	+1.1°	1948

Temperature (F)
9/1/2018 - 11/30/2018



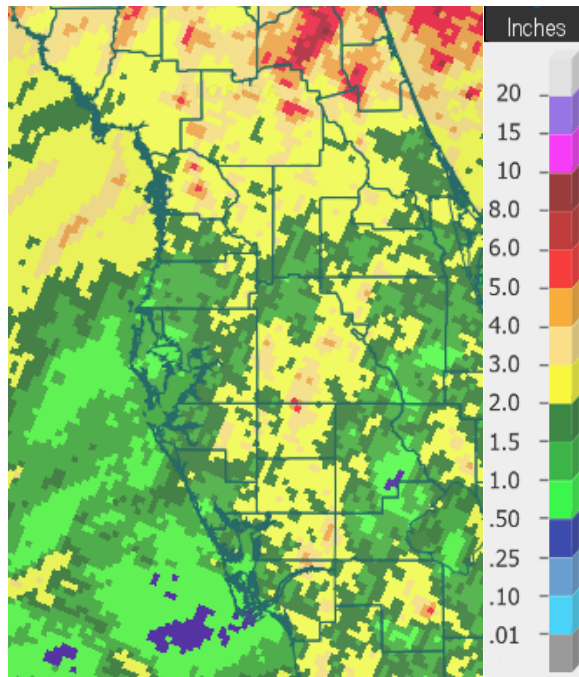
Avg Temperature Autumn 2018

Departure from Normal Temperature (F)
9/1/2018 - 11/30/2018

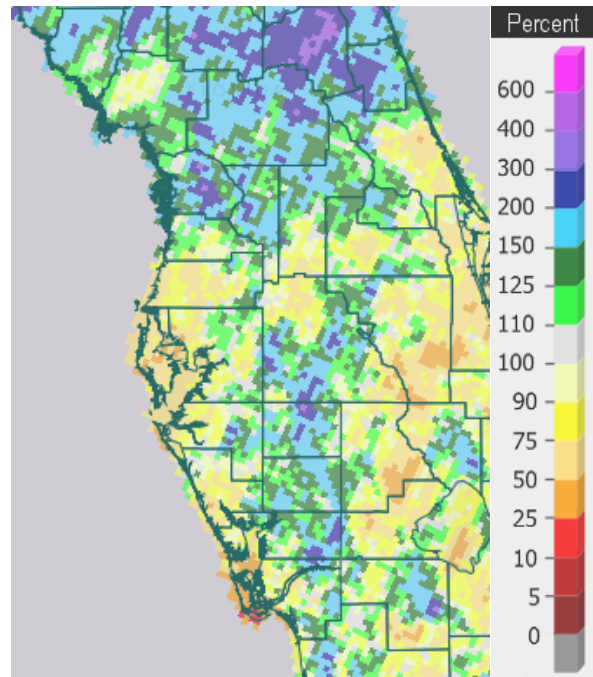


Departure from Normal

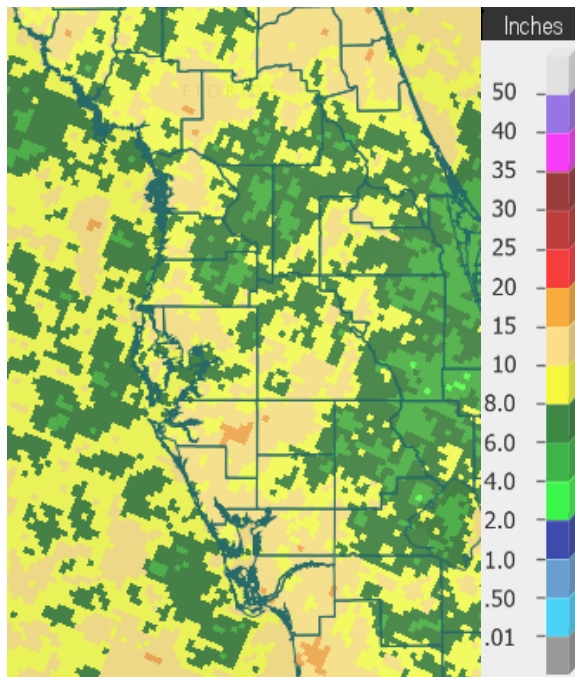
Looking at rainfall, most days in November 2018 were dry, which is pretty typical, with rainfall amounts for the month rather variable from as little as a half inch to over 5 inches. For autumn much of the area had below normal rainfall with amounts ranging from just under 6 inches to over 12 inches.



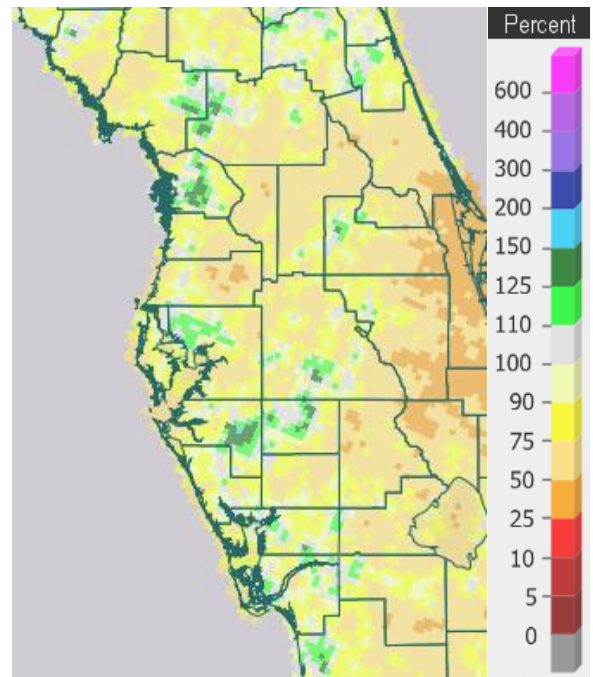
Rainfall Nov 2018



Nov Percent of Normal



Rainfall Autumn 2018



Autumn Percent of Normal

On the following pages are tables of the Top Ten Warmest, Coolest, Wettest, and Driest Novembers and Autumns at some official NWS locations, which include the average/total for this November and Autumn, and the 1981-2010 Normal (average) temperature and rainfall for November and Autumn.

CHIEFLAND 5 SE (records began in June 1956):

Warmest Novembers		Coolest Novembers		Wettest Novembers		Driest Novembers	
1	69.4 in 1985	1	56.6 in 1976	1	7.52 in 1972	1	Trace in 1978
2	69.2 in 1998	2	56.7 in 2008	2	6.47 in 1997	2	0.15 in 2012
3	68.9 in 1986	3	57.3 in 1970	3	6.02 in 1987	3	0.25 in 2016
4	68.6 in 1994	4	58.2 in 1962	4	5.94 in 2002	4	0.33 in 1956
5	67.5 in 1982	5	58.3 in 1968	5	5.25 in 1958	5	0.35 in 1970
6	66.9 in 1973	6	59.2 in 1969	6	4.95 in 1983	6	0.48 in 1998
7	66.5 in 1958	7	59.4 in 2014	7	4.80 in 1963	7	0.61 in 1990
8	66.3 in 1978	8	59.7 in 1984	8	4.73 in 2013	8	0.62 in 1991
9	66.1 in 2003	9	59.8 in 1963	9	4.55 in 1981	9	0.66 in 2001
10	65.9 in 1992	10	60.0 in 2012	10	4.50 in 1986	10	0.82 in 1993
11	65.8 in 1957		60.0 in 1983	
12	65.6 in 2013			33	1.85 in 2018	29	1.85 in 2018
13	65.4 in 2018						
	in 2017						
	in 2001						

Normal Temperature for November at CHIF1 = 62.8°
 Normal Rainfall for November at CHIF1 = 2.65 inches

Warmest Autumns		Coolest Autumns		Wettest Autumns		Driest Autumns	
1	75.2 in 2018	1	67.1 in 1976	1	26.52 in 2004	1	2.05 in 1978
2	74.9 in 1998	2	67.9 in 2008	2	24.26 in 1983	2	3.83 in 2008
3	74.2 in 1986	3	68.7 in 2006	3	20.54 in 1964	3	4.20 in 1961
4	73.9 in 1985	4	68.8 in 1968	4	18.65 in 1959	4	5.13 in 2010
5	73.7 in 1959	5	68.9 in 2000	5	17.59 in 1985	5	5.37 in 1970
6	73.0 in 1973	6	69.1 in 1963	6	16.94 in 1998	6	5.38 in 2003
7	72.9 in 2016	7	69.1 in 1969	7	16.38 in 1997	7	6.24 in 1991
8	72.6 in 1994	8	69.3 in 1956	8	15.91 in 1960	8	6.61 in 1974
9	72.5 in 1978	9	69.3 in 1962	9	15.67 in 2002	9	6.65 in 2005
	72.5 in 1960	10	69.6 in 2010	10	15.26 in 2017	10	6.67 in 1968
						11	6.73 in 1999
						12	6.91 in 2018

Normal Temperature for Autumn at CHIF1 = 70.4°
 Normal Rainfall for Autumn at CHIF1 = 12.64 inches

INVERNESS 3 SE (records began in July 1948):

Warmest Novembers		Coolest Novembers		Wettest Novembers		Driest Novembers	
1	73.1 in 2015	1	59.0 in 1991	1	7.73 in 1980	1	0.00 in 2004
2	70.3 in 1958	2	59.5 in 1976	2	6.40 in 1997	2	0.00 in 1978
3	69.3 in 1964	3	60.3 in 2002	3	6.21 in 1972	3	0.01 in 2016
	69.3 in 1978	4	60.5 in 2014	4	5.48 in 1951	4	0.02 in 1950
5	68.8 in 1957	5	60.6 in 1997	5	4.90 in 2015	5	0.07 in 2012
6	68.6 in 1998	6	61.0 in 1950	6	4.78 in 2014	6	0.23 in 1993
7	68.5 in 1973	7	61.3 in 2012	7	4.69 in 1988	7	0.25 in 1967
	68.5 in 1960	8	61.4 in 1995	8	3.77 in 2005	8	0.28 in 1956
9	68.4 in 2003	9	61.6 in 2000	9	3.70 in 2017	9	0.36 in 2001
10	67.8 in 1961	10	61.7 in 1949	10	3.46 in 1953	10	0.38 in 1966
...		
35	64.9 in 2018	26	64.9 in 2018	29	1.79 in 2018	41	1.79 in 2018
	in 2016		in 2016				
	in 1993		in 1993				

Normal Temperature for November at INVF1 = 65.3°
 Normal Rainfall for November at INVF1 = 1.81 inches

Warmest Autumns		Coolest Autumns		Wettest Autumns		Driest Autumns	
1	76.1 in 2015	1	68.4 in 1976	1	21.53 in 2017	1	2.08 in 1967
2	75.1 in 1958	2	69.4 in 1997	2	21.34 in 1960	2	2.92 in 1978
3	74.9 in 1998	3	70.2 in 1991	3	21.07 in 1950	3	4.19 in 1961
4	74.9 in 1960	4	70.4 in 2006	4	19.55 in 1992	4	4.56 in 1974
	74.9 in 1959	5	70.6 in 2000	5	19.27 in 1997	5	4.97 in 2010
6	74.2 in 1948	6	70.7 in 1987	6	18.83 in 2004	6	5.13 in 2003
7	74.1 in 2009	7	70.8 in 2014	7	17.75 in 2016	7	5.37 in 1954
8	74.1 in 2007	8	71.1 in 1956	8	17.32 in 2001	8	5.47 in 2012
9	73.9 in 2013	9	71.3 in 2002	9	16.51 in 1988	9	5.85 in 2000
	73.9 in 1978	10	71.5 in 1996	10	16.40 in 1979	10	6.14 in 1996
	73.9 in 1961			
12	73.8 in 1965			44	9.10 in 2018	23	9.10 in 2018
13	73.7 in 2018						

Normal Temperature for Autumn at INVF1 = 72.6°
 Normal Rainfall for Autumn at INVF1 = 10.61 inches

BROOKSVILLE AREA (records began in January 1892):

Warmest Novembers	Coollest Novembers	Wettest Novembers	Driest Novembers
1 73.2 in 2015	1 57.5 in 1901	1 9.31 in 1916	1 0.00 in 1967
2 72.7 in 1948	2 60.3 in 2008	2 9.17 in 1987	2 Trace in 2016
3 72.6 in 1946	3 60.5 in 1892	3 8.30 in 1951	Trace in 1931
4 71.0 in 1958	4 60.8 in 2014	4 7.08 in 2014	4 0.01 in 1978
5 70.7 in 1994	5 61.1 in 1923	5 6.64 in 1937	5 0.05 in 1928
6 70.5 in 1973	6 61.3 in 2000	6 6.56 in 1980	6 0.12 in 2001
70.5 in 1896	7 61.4 in 2012	7 6.14 in 1972	7 0.15 in 1913
8 70.1 in 1905	8 61.4 in 1917	8 5.49 in 1932	8 0.18 in 1940
9 69.8 in 1988	9 61.8 in 2002	9 5.14 in 1988	9 0.22 in 1956
69.8 in 1929	10 61.9 in 1962	5.14 in 1920	0.22 in 1924
...	0.22 in 1900
50 66.7 in 2018	62 66.7 in 2018	61 1.42 in 2018	64 1.42 in 2018
in 1944	in 1944	in 2003	in 2003

Normal Temperature for November at BKV = 65.0°

Normal Rainfall for November at BKV = 1.91 inches

Warmest Autumns	Coollest Autumns	Wettest Autumns	Driest Autumns
1 76.0 in 1911	1 69.3 in 1892	1 27.84 in 1950	1 2.30 in 1903
2 75.9 in 2015	2 69.5 in 1901	2 24.74 in 1912	2 3.58 in 2008
3 75.7 in 1905	3 70.2 in 1920	3 22.68 in 1894	3.58 in 1978
4 75.4 in 1941	4 70.3 in 2008	4 21.62 in 1947	4 3.87 in 1967
75.4 in 1919	5 70.4 in 1923	5 21.50 in 1922	5 3.97 in 1909
75.4 in 1915	6 70.5 in 2000	6 21.46 in 1995	6 4.10 in 2010
7 75.3 in 1946	7 70.8 in 2006	7 21.24 in 1921	7 4.58 in 1940
75.3 in 1927	8 70.9 in 2014	8 20.56 in 1938	8 4.61 in 1991
9 75.2 in 2018	70.9 in 1894	9 20.36 in 1911	9 5.37 in 2015
75.2 in 1973	10 71.0 in 1953	10 19.88 in 1988	10 5.61 in 1961
			11 5.81 in 1927
			12 6.00 in 2018

Normal Temperature for Autumn at BKV = 72.4°

Normal Rainfall for Autumn at BKV = 11.20 inches

ST LEO (records began in April 1895):

Warmest Novembers		Coolest Novembers		Wettest Novembers		Driest Novembers	
1	75.1 in 1986	1	60.8 in 1917	1	12.48 in 1988	1	Trace in 1960
2	73.6 in 1985	2	61.3 in 1901	2	8.34 in 1951	2	0.02 in 1978
3	73.2 in 1946	3	61.7 in 1910	3	7.36 in 1987	3	0.03 in 1931
4	73.1 in 1948	4	62.2 in 1930	4	7.21 in 2014		0.03 in 1928
5	72.0 in 1998	5	62.3 in 2014	5	6.22 in 1916	5	0.06 in 2016
6	71.8 in 2015	6	62.5 in 1923	6	6.12 in 1963	6	0.08 in 2012
	71.8 in 1994	7	62.6 in 1970	7	6.06 in 1972	7	0.21 in 1993
8	71.5 in 1982	8	62.8 in 1933	8	5.84 in 1911	8	0.22 in 1940
9	71.4 in 1958		62.8 in 1932	9	5.61 in 1918	9	0.23 in 1913
10	71.3 in 1978		62.8 in 1904	10	4.69 in 1937	10	0.26 in 1945
...		
32	68.2 in 2018	90	68.2 in 2018	55	1.92 in 2018	70	1.92 in 2018
	in 1999		in 1999				
	in 1941		in 1941				
	in 1929		in 1929				

Normal Temperature for November at STLFL1 = 68.6°
 Normal Rainfall for November at STLFL1 = 2.20 inches

Warmest Autumns		Coolest Autumns		Wettest Autumns		Driest Autumns	
1	77.9 in 1985	1	69.8 in 1917	1	25.80 in 1988	1	1.52 in 1978
2	77.4 in 1986	2	70.1 in 1903	2	25.13 in 1912	2	3.19 in 1940
3	76.5 in 1998	3	70.2 in 1930	3	24.60 in 1922	3	3.56 in 2010
4	76.4 in 2007	4	70.7 in 1920	4	22.73 in 1953	4	3.81 in 1909
5	76.2 in 1946	5	71.0 in 1976	5	21.77 in 1997	5	4.14 in 1967
6	76.1 in 2009	6	71.0 in 1923	6	21.48 in 1982	6	4.76 in 1991
7	76.1 in 1941	7	71.1 in 1910	7	21.40 in 1950	7	5.09 in 2008
8	75.9 in 2004	8	71.4 in 1943	8	21.29 in 1921	8	5.11 in 2018
9	75.8 in 2018	9	71.5 in 2014	9	20.71 in 1949	9	5.33 in 1931
	75.8 in 2003	10	71.8 in 1922	10	20.35 in 2004	10	5.63 in 1961
			71.8 in 1956				

Normal Temperature for Autumn at STLFL1= 75.0°
 Normal Rainfall for Autumn at STLFL1 = 12.02 inches

TARPON SPRINGS (records began in January 1892):

Warmest Novembers		Coolest Novembers		Wettest Novembers		Driest Novembers	
1	75.9 in 1986	1	59.6 in 2004	1	9.13 in 1988	1	0.00 in 2016
2	74.4 in 1985	2	60.0 in 1901	2	8.18 in 1916	2	Trace in 1939
3	74.3 in 1946	3	61.5 in 1917	3	6.99 in 1997		Trace in 1931
4	73.5 in 2015	4	61.7 in 1962	4	6.63 in 1992	4	0.02 in 1978
5	72.6 in 1994		61.7 in 1892	5	6.09 in 2014	5	0.06 in 1933
6	72.3 in 1998	6	61.9 in 1910	6	5.80 in 1963	6	0.08 in 1942
7	71.8 in 2003	7	62.5 in 1904	7	5.57 in 1920	7	0.09 in 1940
8	71.6 in 1896	8	62.6 in 2014	8	5.19 in 1955		0.09 in 1928
9	71.4 in 1982		62.6 in 1970	9	5.18 in 1896	9	0.10 in 1930
10	71.3 in 1929	10	63.0 in 1976	10	5.13 in 1919	10	0.13 in 1924
	71.3 in 1919		63.0 in 1912	
...		...		83	0.97 in 2018	42	0.97 in 2018
29	69.4 in 2018	93	69.4 in 2018		in 1957		in 1957
	in 1964		in 1964				
	in 1911		in 1911				

Normal Temperature for November at TRPF1 = 67.8°
 Normal Rainfall for November at TRPF1 = 2.15 inches

Warmest Autumns		Coolest Autumns		Wettest Autumns		Driest Autumns	
1	78.1 in 1985	1	70.8 in 1917	1	28.87 in 1911	1	1.85 in 2005
2	78.0 in 1986		70.8 in 1892	2	28.34 in 1988	2	3.33 in 1978
3	77.9 in 1919	3	71.4 in 1903	3	24.31 in 2014	3	3.44 in 1967
4	77.6 in 2018	4	71.5 in 1976	4	22.25 in 1997	4	4.62 in 2008
5	76.8 in 1946	5	71.7 in 1967	5	21.71 in 1983	5	4.85 in 2010
6	76.7 in 2015		71.7 in 1901	6	21.70 in 1912	6	4.86 in 1927
	76.7 in 1994	7	71.9 in 1963	7	21.43 in 1975	7	5.57 in 1909
8	76.6 in 1998		71.9 in 1962	8	20.78 in 1995	8	5.74 in 1930
9	76.4 in 1921		71.9 in 1940		20.78 in 1959	9	5.99 in 1981
	76.4 in 1911		71.9 in 1904	10	20.60 in 1971	10	6.37 in 1961
			71.9 in 1899				6.37 in 1933
				
				68	11.01 in 2018	57	11.01 in 2018
					in 1994		in 1994

Normal Temperature for Autumn at TRPF1 = 74.2°
 Normal Rainfall for Autumn at TRPF1 = 12.45 inches

TAMPA AREA (records began in April 1890):

Warmest Novembers		Coolest Novembers		Wettest Novembers		Driest Novembers	
1	76.3 in 1986	1	61.4 in 1901	1	6.12 in 1963	1	Trace in 1960
2	76.2 in 2015	2	61.9 in 1970	2	5.97 in 1988	2	0.01 in 2016
3	73.7 in 1946	3	62.3 in 1968	3	5.38 in 1954		0.01 in 1978
4	73.6 in 1948	4	62.5 in 1962	4	5.26 in 2014	4	0.04 in 1931
	73.6 in 1985	5	62.8 in 1976	5	4.89 in 1953	5	0.05 in 1928
6	72.7 in 1958	6	62.9 in 1969	6	4.85 in 1925	6	0.08 in 1927
7	72.5 in 1998		62.9 in 1917	7	4.75 in 1941	7	0.10 in 2001
8	72.3 in 1994	8	63.3 in 1910	8	4.36 in 1987		0.10 in 1942
9	72.1 in 2017	9	63.4 in 1923	9	4.34 in 1916	9	0.11 in 2007
10	72.0 in 1896	10	63.7 in 1949	10	3.96 in 1896	10	0.12 in 2017
...							0.12 in 1974
19	70.7 in 2018			
	in 1929			89	0.63 in 2018	40	0.63 in 2018
					in 1897		in 1897

Normal Temperature for November at TPA = 69.1°

Normal Rainfall for November at TPA = 1.55 inches

Warmest Autumns		Coolest Autumns		Wettest Autumns		Driest Autumns	
1	79.0 in 2015	1	71.0 in 1976	1	24.38 in 1894	1	3.19 in 2010
2	78.9 in 2018	2	71.5 in 1891	2	22.83 in 1912	2	3.30 in 1909
3	78.4 in 1986	3	71.6 in 1903	3	20.45 in 1997	3	3.62 in 1961
4	77.9 in 2017	4	71.7 in 1968	4	19.80 in 1922	4	4.06 in 1942
5	77.8 in 1985	5	71.8 in 1917	5	19.62 in 1988	5	4.21 in 1940
6	77.7 in 2016		71.8 in 1901	6	19.07 in 1947	6	4.25 in 1913
7	77.5 in 1919	7	71.9 in 1923	7	18.15 in 1953	7	4.35 in 1974
8	77.2 in 1998	8	72.2 in 1892	8	17.60 in 1890	8	5.07 in 1967
9	77.0 in 2007	9	72.3 in 1962	9	16.58 in 1911	9	5.22 in 1984
10	76.9 in 1990	10	72.4 in 1956	10	16.41 in 1975	10	5.33 in 2003
	76.9 in 1941		72.4 in 1910	
				53	11.25 in 2018	77	11.25 in 2018

Normal Temperature for Autumn at TPA = 75.7°

Normal Rainfall for Autumn at TPA = 10.11 inches

ST PETERSBURG (records began in August 1914):

Warmest Novembers	Coollest Novembers	Wettest Novembers	Driest Novembers
1 77.4 in 1986	1 63.9 in 1917	1 6.94 in 1988	1 0.00 in 1931
2 76.3 in 1985	2 64.3 in 1962	2 6.85 in 1953	2 0.02 in 1960
3 74.9 in 2015	3 64.7 in 1949	3 6.80 in 1987	3 0.03 in 2016
4 74.8 in 1946	4 65.1 in 1976	4 6.04 in 1963	0.03 in 1942
5 74.5 in 1948	5 65.2 in 1995	5 5.71 in 1916	5 0.04 in 2001
6 73.8 in 2005	65.2 in 1951	6 5.63 in 1925	6 0.10 in 1978
7 73.7 in 1978	7 65.3 in 1950	7 5.08 in 1954	7 0.12 in 1974
8 73.5 in 1958	8 65.4 in 1954	8 5.03 in 1968	8 0.14 in 1930
9 72.9 in 1994	9 65.7 in 1956	9 5.02 in 1915	9 0.15 in 1928
72.9 in 1929	65.7 in 1923	10 4.83 in 1997	10 0.18 in 1946
...
21 71.5 in 2018	80 71.5 in 2018	55 1.24 in 2018	50 1.24 in 2018
in 2010	in 2010		
in 2001	in 2001		
in 1982	in 1982		
in 1972	in 1972		

Normal Temperature for November at SPG = 70.1°
 Normal Rainfall for November at SPG = 1.90 inches

Warmest Autumns	Coollest Autumns	Wettest Autumns	Driest Autumns
1 80.0 in 1985	1 72.6 in 1917	1 32.75 in 1988	1 2.13 in 2010
2 79.9 in 1986	2 73.2 in 1956	2 30.04 in 1953	2 4.00 in 1990
3 79.8 in 2005	3 73.4 in 1952	3 26.31 in 1986	3 4.49 in 1967
4 79.1 in 2015	4 73.5 in 1954	4 26.30 in 1952	4 4.69 in 2008
5 79.0 in 2018	73.5 in 1953	5 21.83 in 1997	5 4.84 in 1964
6 78.4 in 2013	6 73.6 in 1976	6 21.06 in 1922	6 5.01 in 1940
78.4 in 1941	73.6 in 1962	7 20.14 in 1954	7 5.52 in 1927
8 78.3 in 2010	73.6 in 1923	8 19.12 in 1918	8 5.61 in 1966
78.3 in 1919	9 73.7 in 1943	9 19.07 in 2001	9 5.73 in 1965
10 78.0 in 1972	10 73.9 in 1950	10 18.52 in 1959	10 6.14 in 1939
			11 6.37 in 1972
			12 6.51 in 2012
			13 6.59 in 2018

Normal Temperature for Autumn at SPG = 76.5°
 Normal Rainfall for Autumn at SPG = 12.44 inches

PLANT CITY (records began in September 1892):

Warmest Novembers	Coollest Novembers	Wettest Novembers	Driest Novembers
1 75.7 in 1986	1 61.8 in 1932	1 7.88 in 1953	1 0.00 in 1960
2 74.6 in 2015	2 62.0 in 1930	2 7.34 in 1988	0.00 in 1931
3 74.3 in 1948	3 62.1 in 1917	3 6.75 in 2014	0.00 in 1905
4 73.9 in 1946	4 62.4 in 1933	4 6.46 in 1963	4 0.01 in 2007
5 72.7 in 1985	5 62.6 in 1904	5 5.90 in 1918	5 0.05 in 2012
6 72.5 in 1896	6 62.9 in 1912	6 5.56 in 1971	6 0.10 in 1928
7 72.3 in 1994	7 63.1 in 2014	7 4.63 in 1980	0.10 in 1924
72.3 in 1958	8 63.3 in 1962	8 4.52 in 1987	8 0.13 in 1940
9 71.7 in 1978	63.3 in 1949	9 4.41 in 1947	9 0.15 in 2017
10 71.2 in 2018	10 63.4 in 1926	10 4.07 in 1997	0.15 in 1978
	
		58 1.37 in 2018	63 1.37 in 2018

Normal Temperature for November at PLCF1 = 68.2°
 Normal Rainfall for November at PLCF1 = 1.83 inches

Warmest Autumns	Coollest Autumns	Wettest Autumns	Driest Autumns
1 78.4 in 2018	1 70.4 in 1930	1 25.05 in 1947	1 1.89 in 1909
2 77.9 in 1986	2 70.8 in 1932	2 23.20 in 1894	2 1.99 in 1961
3 77.4 in 2015	3 71.2 in 1940	3 23.04 in 1988	3 3.56 in 1940
4 77.2 in 1985	4 71.5 in 2000	4 21.72 in 1953	4 4.08 in 1991
5 76.5 in 1946	5 71.6 in 1976	5 20.36 in 2014	5 4.29 in 1927
6 76.0 in 2016	6 71.7 in 1943	6 20.15 in 2004	6 4.41 in 1990
7 75.9 in 1948	7 72.0 in 1937	7 20.06 in 1998	7 4.55 in 2010
75.9 in 1911	72.0 in 1909	8 19.92 in 1959	8 4.57 in 1939
9 75.8 in 2007	9 72.2 in 1968	9 19.76 in 1912	9 4.63 in 1967
75.8 in 1959	10 72.4 in 1926	10 18.24 in 1960	10 4.67 in 2008
	
		97 7.20 in 2018	19 7.20 in 2018

Normal Temperature for Autumn at PLCF1 = 74.5°
 Normal Rainfall for Autumn at PLCF1 = 11.28 inches

LAKELAND AREA (records began in January 1915):

Warmest Novembers		Coolest Novembers		Wettest Novembers		Driest Novembers	
1	76.9 in 1986	1	62.6 in 1970	1	7.56 in 2014	1	0.00 in 1924
2	75.4 in 2015	2	62.9 in 1962	2	7.19 in 1988	2	Trace in 2016
3	73.4 in 1985	3	63.0 in 1969	3	6.08 in 1987		Trace in 1960
4	73.3 in 1994	4	63.4 in 1949	4	5.94 in 1941		Trace in 1917
	73.3 in 1948	5	63.5 in 1976	5	5.71 in 1963	5	0.03 in 1931
6	73.1 in 1946		63.5 in 1951	6	5.54 in 1980	6	0.05 in 1928
7	71.6 in 2003		63.5 in 1950	7	5.37 in 1953	7	0.07 in 1950
	71.6 in 1958	8	63.7 in 1968	8	4.59 in 2018	8	0.08 in 2012
9	71.5 in 1998	9	63.9 in 2008	9	4.48 in 1997	9	0.10 in 1991
10	71.3 in 1988	10	64.0 in 1923	10	4.41 in 1994	10	0.11 in 1940
	71.3 in 1978						
12	71.2 in 1992						
13	70.9 in 1982						
14	70.8 in 2018						
	in 1929						

Normal Temperature for November at LLDF1 = 68.2°
 Normal Rainfall for November at LLDF1 = 2.30 inches

Warmest Autumns		Coolest Autumns		Wettest Autumns		Driest Autumns	
1	79.2 in 1986	1	71.5 in 1976	1	22.45 in 2014	1	2.99 in 1961
2	78.3 in 2015	2	72.1 in 1943	2	21.46 in 2004	2	3.21 in 1940
3	78.1 in 1985	3	72.2 in 1923	3	19.78 in 1947	3	3.83 in 1995
4	78.0 in 2018	4	72.3 in 2006	4	19.52 in 1918	4	4.16 in 1942
5	77.0 in 1994		72.3 in 1968	5	18.47 in 1998	5	4.25 in 1927
6	76.8 in 2009		72.3 in 1956	6	18.39 in 1929	6	4.29 in 1934
7	76.7 in 1990	7	72.4 in 1967	7	18.29 in 1953	7	4.58 in 2010
8	76.6 in 2017	8	72.5 in 1940	8	17.36 in 1997	8	4.69 in 2008
9	76.4 in 1998	9	72.6 in 1954	9	17.09 in 1989	9	5.01 in 1967
	76.4 in 1993	10	72.7 in 1962	10	17.06 in 1982	10	5.12 in 1978
	76.4 in 1941		72.7 in 1953		17.06 in 1979		
			72.7 in 1924	
				57	10.03 in 2018	48	10.03 in 2018

Normal Temperature for Autumn at LLDF1 = 74.5°
 Normal Rainfall for Autumn at LLDF1 = 12.62 inches

WINTER HAVEN AREA (records began in January 1941):

Warmest Novembers	Coollest Novembers	Wettest Novembers	Driest Novembers
1 76.8 in 1986	1 63.1 in 1962	1 7.81 in 1988	1 0.00 in 1960
2 75.6 in 1948	2 63.2 in 1970	2 7.13 in 1987	0.00 in 1950
3 75.1 in 2015	3 63.9 in 2008	3 6.76 in 1953	3 Trace in 2011
4 74.9 in 1985	63.9 in 1968	4 6.27 in 1963	4 0.01 in 2012
5 74.5 in 1946	5 64.1 in 1976	5 5.32 in 1994	5 0.07 in 2016
6 73.1 in 1994	6 64.5 in 1949	6 5.21 in 1980	6 0.13 in 1966
7 72.6 in 1988	7 64.6 in 1969	7 4.94 in 1951	7 0.16 in 1942
8 72.4 in 1958	8 64.7 in 1981	8 4.07 in 1995	8 0.19 in 1985
9 72.2 in 1998	9 64.9 in 1950	9 3.97 in 1968	9 0.20 in 2017
10 71.9 in 2018	10 65.0 in 2012	10 3.88 in 2014	0.20 in 1991
71.9 in 1973	65.0 in 1951		0.20 in 1967
	
		38 1.14 in 2018	36 1.14 in 2018

Normal Temperature for November at GIF = 69.0°

Normal Rainfall for November at GIF = 2.11 inches

Warmest Autumns	Coollest Autumns	Wettest Autumns	Driest Autumns
1 79.1 in 2018	1 71.8 in 1976	1 21.86 in 1987	1 2.72 in 1961
2 79.0 in 1986	2 72.2 in 1968	2 20.61 in 1947	2 3.11 in 2009
3 78.4 in 1985	3 72.5 in 1962	3 20.57 in 1953	3 4.27 in 1967
4 78.0 in 2015	4 73.0 in 1963	4 20.35 in 1960	4 4.29 in 2008
5 77.2 in 1998	5 73.2 in 2006	5 18.82 in 1959	5 4.91 in 1985
77.2 in 1989	6 73.3 in 2008	6 18.11 in 1950	6 5.14 in 1942
77.2 in 1946	73.3 in 1981	7 17.84 in 2014	7 5.44 in 1978
77.2 in 1941	73.3 in 1953	8 17.59 in 2001	8 5.54 in 2006
9 76.8 in 2009	9 73.4 in 1943	9 17.16 in 1988	9 5.78 in 1990
10 76.6 in 1994	10 73.5 in 2000	10 15.63 in 1948	10 5.87 in 2015
	
		54 7.57 in 2018	17 7.57 in 2018

Normal Temperature for Autumn at GIF = 75.4°

Normal Rainfall for Autumn at GIF = 11.16 inches

BARTOW (records began in June 1892):

Warmest Novembers		Coolest Novembers		Wettest Novembers		Driest Novembers	
1	76.4 in 1986	1	60.9 in 1917	1	7.40 in 1987	1	0.00 in 2016
2	75.3 in 2015	2	61.5 in 1970	2	7.36 in 2002		0.00 in 1960
3	74.5 in 1948	3	62.0 in 1910	3	6.52 in 1963	3	0.02 in 1931
4	73.6 in 2013	4	62.3 in 1901	4	6.33 in 1988	4	0.04 in 1966
	73.6 in 1985	5	62.6 in 1904	5	5.97 in 1953		0.04 in 1928
6	73.5 in 1946		62.6 in 1892	6	5.80 in 1951	6	0.05 in 2012
7	73.0 in 1994	7	62.9 in 1962	7	4.75 in 1911	7	0.06 in 1950
8	72.9 in 1958	8	63.5 in 2008	8	4.71 in 1937	8	0.09 in 1923
9	72.5 in 1998		63.5 in 1912	9	4.68 in 2015	9	0.10 in 2007
10	72.3 in 2003	10	63.6 in 1939	10	4.54 in 1983		0.10 in 1974
...		
25	70.0 in 2018 in 2009	72	70.0 in 2018 in 2009	56	1.69 in 2018	72	1.69 in 2018

Normal Temperature for November at BARF1 = 69.2°
 Normal Rainfall for November at BARF1 = 1.94 inches

Warmest Autumns		Coolest Autumns		Wettest Autumns		Driest Autumns	
1	77.8 in 2015	1	71.0 in 1894	1	26.99 in 1894	1	3.71 in 1942
2	77.2 in 1998	2	71.1 in 1892	2	21.30 in 1947	2	4.88 in 2010
3	77.1 in 2018	3	71.4 in 1917	3	20.97 in 1917	3	5.00 in 1940
4	76.9 in 2009	4	71.8 in 1976	4	20.77 in 1922	4	5.02 in 1990
5	76.8 in 1946	5	72.1 in 1895	5	20.38 in 1959	5	5.25 in 1961
	76.8 in 1919	6	72.3 in 1914	6	20.31 in 1982	6	5.26 in 1939
7	76.5 in 1958	7	72.4 in 1970	7	19.77 in 1953	7	5.29 in 1984
8	76.4 in 1994	8	72.5 in 1904	8	19.43 in 1902	8	5.47 in 1974
9	76.2 in 1990	9	72.8 in 1967	9	19.30 in 1960	9	5.57 in 1906
10	76.1 in 1960		72.8 in 1963	10	18.97 in 2004	10	5.90 in 1927
			72.8 in 1935			11	6.02 in 2018

Normal Temperature for Autumn at BARF1 = 75.5°
 Normal Rainfall for Autumn at BARF1 = 11.40 inches

SARASOTA-BRADENTON AREA (records began in January 1911):

Warmest Novembers	Coollest Novembers	Wettest Novembers	Driest Novembers
1 76.1 in 1986	1 63.2 in 1917	1 9.40 in 1997	1 0.00 in 1931
2 75.4 in 2015	2 63.5 in 1949	2 6.81 in 1920	2 Trace in 1940
3 73.2 in 1948	63.5 in 1923	3 6.24 in 1925	Trace in 1928
4 73.1 in 1958	4 64.2 in 1976	4 5.68 in 1953	4 0.02 in 2016
5 72.7 in 1994	5 64.5 in 2008	5 5.18 in 1941	5 0.06 in 2001
6 72.4 in 1985	6 64.6 in 1981	6 5.15 in 1988	0.06 in 1991
7 72.2 in 2013	64.6 in 2014	7 4.94 in 1918	7 0.09 in 1930
8 72.1 in 1998	8 64.7 in 1968	8 4.69 in 2002	8 0.16 in 2007
72.1 in 1946	9 64.8 in 1933	9 4.55 in 1972	9 0.20 in 1945
10 71.9 in 2016	10 65.0 in 1962	10 4.43 in 1983	10 0.21 in 1978
11 71.8 in 2018			0.21 in 1950
	
		49 1.62 in 2018	58 1.62 in 2018
		in 1935	in 1935

Normal Temperature for November at SRQ = 69.2°
 Normal Rainfall for November at SRQ = 1.93 inches

Warmest Autumns	Coollest Autumns	Wettest Autumns	Driest Autumns
1 78.3 in 2016	1 71.3 in 1976	1 28.46 in 1953	1 3.64 in 2010
2 78.2 in 1986	2 72.2 in 1930	2 25.64 in 1962	2 4.01 in 1991
3 78.0 in 2015	3 72.3 in 1943	3 23.66 in 1922	3 5.08 in 1942
4 77.8 in 2018	4 72.5 in 1940	4 23.12 in 1997	4 5.44 in 1974
5 77.3 in 2007	5 72.7 in 1923	5 22.26 in 1912	5 5.61 in 2012
6 77.1 in 1998	6 73.0 in 1981	6 22.01 in 1952	6 5.95 in 1945
77.1 in 1990	73.0 in 1944	7 21.30 in 1988	7 6.05 in 1944
8 77.0 in 2013	73.0 in 1937	8 20.43 in 1928	8 6.27 in 1984
9 76.9 in 1985	9 73.1 in 1968	9 20.29 in 1957	9 6.42 in 1930
10 76.8 in 2005	73.1 in 1956	10 19.80 in 1960	10 6.43 in 1961
	
		76 8.87 in 2018	33 8.87 in 2018

Normal Temperature for Autumn at SRQ = 75.6°
 Normal Rainfall for Autumn at SRQ = 12.15 inches

VENICE (records began in April 1955):

Warmest Novembers		Coolest Novembers		Wettest Novembers		Driest Novembers	
1	75.8 in 2015	1	64.2 in 2008	1	7.65 in 1997	1	0.00 in 1991
2	74.1 in 1985	2	64.7 in 1962	2	5.85 in 1972	2	0.02 in 2007
3	73.6 in 1998	3	64.9 in 1981	3	5.56 in 1983	3	0.04 in 2001
	73.6 in 1994		64.9 in 1970	4	5.55 in 1963	4	0.06 in 2016
5	72.5 in 2013	5	65.1 in 1956	5	4.77 in 1957	5	0.15 in 1960
6	72.3 in 2003	6	65.2 in 1976	6	4.46 in 1980	6	0.20 in 1993
7	72.2 in 1978	7	65.4 in 1968	7	4.14 in 1998	7	0.30 in 1956
8	71.9 in 2011	8	65.8 in 2014	8	3.77 in 1968	8	0.31 in 1978
	71.9 in 1982	9	66.0 in 1969	9	3.72 in 2014	9	0.32 in 2012
10	71.8 in 2009	10	66.8 in 1966	10	3.47 in 1988		0.32 in 2003
	71.8 in 1973			
12	71.4 in 2012			40	0.93 in 2018	25	0.93 in 2018
13	71.2 in 2018						
	in 2001						

Normal Temperature for November at VNCF1 = 69.3°
 Normal Rainfall for November at VNCF1 = 1.80 inches

Warmest Autumns		Coolest Autumns		Wettest Autumns		Driest Autumns	
1	78.9 in 2009	1	71.8 in 1976	1	26.44 in 1983	1	3.04 in 1961
2	78.5 in 1998	2	72.1 in 1968	2	25.83 in 1995	2	3.63 in 1981
3	78.4 in 2015	3	72.8 in 2008	3	21.38 in 1997	3	5.24 in 1978
4	77.8 in 2018		72.8 in 1956	4	20.89 in 1960	4	5.81 in 2010
	77.8 in 2013	5	73.6 in 1974	5	20.27 in 1968	5	6.18 in 1964
	77.8 in 1985	6	73.7 in 1987	6	19.23 in 1959	6	6.59 in 1984
7	77.6 in 2010		73.7 in 1981	7	18.86 in 1982	7	7.16 in 1990
8	77.3 in 1994		73.7 in 1962	8	18.67 in 2014	8	7.38 in 2011
9	77.0 in 2017	9	73.9 in 1977	9	18.33 in 1957	9	7.81 in 1965
	77.0 in 2011	10	74.0 in 2006	10	18.29 in 1962	10	8.06 in 2016
	77.0 in 2003					11	8.28 in 2009
						12	8.61 in 2018

Normal Temperature for Autumn at VNCF1 = 75.3°
 Normal Rainfall for Autumn at VNCF1 = 12.30 inches

MYAKKA RIVER STATE PARK (Temperature records began in March 1956
and Rainfall records began in Sep 1943):

Warmest Novembers		Coolest Novembers		Wettest Novembers		Driest Novembers	
1	75.8 in 2015	1	62.1 in 1962	1	10.19 in 1997	1	0.00 in 2001
2	75.6 in 1986	2	62.4 in 1969	2	5.13 in 1953	2	0.02 in 1950
3	73.4 in 1998	3	62.8 in 1970	3	5.04 in 1947	3	0.03 in 1991
4	73.2 in 1985	4	63.2 in 1968	4	5.01 in 1972	4	0.07 in 2016
5	72.7 in 1958	5	64.1 in 2008	5	4.87 in 1981	5	0.19 in 2012
6	72.3 in 1982	6	65.3 in 2000	6	4.73 in 1958	6	0.20 in 1944
7	72.1 in 2013	7	65.4 in 2012	7	4.52 in 1963	7	0.30 in 1996
	72.1 in 1978		65.4 in 1963	8	4.45 in 2002		0.30 in 1993
9	71.6 in 2003	9	65.8 in 1976	9	4.42 in 1983		0.30 in 1965
10	71.5 in 1991	10	65.9 in 2002	10	4.22 in 2014	10	0.37 in 1945
11	71.0 in 2005			
	71.0 in 1988			28	2.20 in 2018	47	2.20 in 2018
13	70.7 in 2018						

Normal Temperature for November at MKCF1 = 69.1°
Normal Rainfall for November at MKCF1 = 2.15 inches

Warmest Autumns		Coolest Autumns		Wettest Autumns		Driest Autumns	
1	78.5 in 2015	1	71.7 in 1962	1	25.70 in 1962	1	4.57 in 1961
2	78.3 in 1998	2	72.6 in 1968	2	23.65 in 1997	2	5.85 in 1974
3	78.0 in 2018	3	72.7 in 1976	3	23.43 in 1979	3	6.14 in 1991
4	77.9 in 1986	4	72.8 in 1963	4	21.95 in 2014	4	6.52 in 2008
5	77.8 in 1985	5	73.4 in 1970	5	21.67 in 1995	5	7.52 in 1970
6	77.7 in 1991		73.4 in 1969	6	21.13 in 1953	6	7.57 in 1955
7	76.8 in 2009	7	73.5 in 2008	7	20.63 in 1957	7	8.07 in 2012
	76.8 in 1990	8	73.7 in 2000	8	20.18 in 2001	8	8.67 in 1950
9	76.7 in 2013	9	73.8 in 1992	9	19.62 in 1952	9	8.75 in 1996
10	76.6 in 1993	10	73.9 in 1987	10	19.59 in 1994	10	8.84 in 2011
				
				21	16.67 in 2018	53	16.67 in 2018

Normal Temperature for Autumn at MKCF1 = 75.3°
Normal Rainfall for Autumn at MKCF1 = 13.33 inches

WAUCHULA 2 N (records began in January 1933):

Warmest Novembers	Coollest Novembers	Wettest Novembers	Driest Novembers
1 75.7 in 1986	1 61.9 in 2012	1 11.18 in 1987	1 0.02 in 1940
2 74.6 in 2015	2 62.5 in 2014	2 10.38 in 1997	2 0.03 in 1967
3 74.4 in 1948	62.5 in 1949	3 6.43 in 1953	3 0.08 in 1960
4 73.2 in 1946	4 63.2 in 1962	4 5.89 in 1963	4 0.12 in 1991
5 72.7 in 1985	5 63.4 in 1970	5 4.75 in 1972	5 0.16 in 1974
6 72.4 in 1958	6 63.5 in 1956	6 4.41 in 2002	6 0.17 in 2016
7 71.7 in 1988	7 63.8 in 2000	7 4.37 in 2014	7 0.19 in 2012
8 71.4 in 1978	8 63.9 in 1969	8 3.93 in 2010	8 0.23 in 1944
71.4 in 1973	9 64.0 in 1950	9 3.91 in 1937	9 0.24 in 1966
10 71.1 in 1998	10 64.4 in 1954	10 3.44 in 1988	0.24 in 1956
71.1 in 1947		11 3.42 in 2018	
...	...		
20 70.1 in 2018	62 70.1 in 2018		
in 1972	in 1972		

Normal Temperature for November at WAUF1 = 69.5°
 Normal Rainfall for November at WAUF1 = 2.14 inches

Warmest Autumns	Coollest Autumns	Wettest Autumns	Driest Autumns
1 78.1 in 2009	1 71.6 in 2014	1 27.02 in 1953	1 2.12 in 1961
2 77.9 in 2007	2 71.7 in 2012	2 23.48 in 1947	2 3.84 in 1974
3 77.7 in 1985	3 72.0 in 1956	3 20.13 in 1975	3 4.75 in 1967
4 77.5 in 2015	4 72.1 in 1943	4 20.12 in 1952	4 4.92 in 2008
5 77.2 in 1941	5 72.2 in 1954	5 19.04 in 1987	5 5.10 in 1978
6 76.9 in 2018	6 72.5 in 2010	6 19.02 in 1960	6 5.80 in 1991
7 76.3 in 1946	72.5 in 2006	7 19.00 in 1997	7 6.09 in 1976
8 76.2 in 1989	72.5 in 1953	8 18.33 in 2017	8 6.10 in 1944
9 76.1 in 1990	72.5 in 1944	9 16.90 in 1938	9 6.32 in 1980
76.1 in 1936	10 72.6 in 1976	10 16.88 in 1969	10 6.58 in 2003
	
		53 9.30 in 2018	29 9.30 in 2018

Normal Temperature for Autumn at WAUF1 = 76.1°
 Normal Rainfall for Autumn at WAUF1 = 10.87 inches

ARCADIA (records began in January 1899):

Warmest Novembers	Coollest Novembers	Wettest Novembers	Driest Novembers
1 74.9 in 1986	1 62.1 in 1901	1 6.69 in 1997	1 Trace in 1996
2 74.7 in 2015	2 62.2 in 2008	2 5.67 in 1947	Trace in 1940
3 74.2 in 1948	3 62.6 in 1970	3 5.11 in 1987	Trace in 1928
4 73.3 in 1958	4 62.7 in 1910	4 5.08 in 2002	4 0.01 in 1931
73.3 in 1946	5 62.8 in 1923	5 4.95 in 1980	5 0.04 in 1950
6 72.7 in 1919	6 63.3 in 1933	6 4.82 in 1992	6 0.05 in 2016
7 72.2 in 1902	7 63.4 in 1949	4.82 in 1962	7 0.06 in 2008
8 72.0 in 1911	8 63.7 in 2014	8 4.53 in 2014	8 0.09 in 2007
9 71.9 in 1990	9 63.8 in 2012	9 4.43 in 1951	9 0.10 in 1991
10 71.6 in 1985	63.8 in 1962	10 4.01 in 1968	0.10 in 1960
...
21 70.4 in 2018	87 70.4 in 2018	24 2.68 in 2018	90 2.68 in 2018

Normal Temperature for November at ARCF1 = 68.1°
 Normal Rainfall for November at ARCF1 = 1.94 inches

Warmest Autumns	Coollest Autumns	Wettest Autumns	Driest Autumns
1 78.0 in 1919	1 71.6 in 1923	1 24.53 in 1952	1 3.03 in 1961
2 77.4 in 1911	2 71.7 in 1976	2 22.94 in 1953	2 4.14 in 1909
3 77.2 in 2015	71.7 in 1910	3 22.83 in 1908	3 4.68 in 1901
77.2 in 1986	4 71.8 in 2008	4 20.84 in 1947	4 4.77 in 1946
77.2 in 1902	5 72.2 in 1968	5 20.79 in 1960	5 5.62 in 1925
6 76.9 in 2018	6 72.5 in 1943	6 20.17 in 1962	6 5.89 in 1942
7 76.6 in 1946	7 72.6 in 1970	7 19.95 in 1910	7 5.97 in 1913
8 76.4 in 1998	72.6 in 1969	8 18.88 in 1959	8 5.98 in 1974
76.4 in 1948	9 72.7 in 1990	9 18.83 in 2017	9 5.99 in 1955
76.4 in 1941	72.7 in 1962	10 18.62 in 1969	10 6.00 in 2008
	
		87 8.11 in 2018	20 8.11 in 2018

Normal Temperature for Autumn at ARCF1 = 74.4°
 Normal Rainfall for Autumn at ARCF1 = 11.81 inches

ARCHBOLD BIO STN (records began in January 1969):

Warmest Novembers	Coollest Novembers	Wettest Novembers	Driest Novembers
1 76.0 in 2015	1 62.2 in 2008	1 5.94 in 1987	1 0.00 in 2016
2 75.6 in 1986	2 63.1 in 2012	2 5.16 in 1998	0.00 in 2008
3 72.4 in 1992	3 63.2 in 1970	3 4.52 in 2002	3 0.08 in 1986
4 71.7 in 1985	4 64.2 in 1969	4 4.46 in 1997	4 0.12 in 1970
5 71.6 in 1994	5 64.4 in 1981	5 4.37 in 1992	5 0.13 in 1975
6 71.3 in 1978	6 65.1 in 2014	6 4.17 in 1977	6 0.20 in 1996
71.3 in 1973	7 65.3 in 2006	7 4.16 in 1994	7 0.21 in 2012
8 71.2 in 2013	8 65.4 in 2000	8 3.80 in 1988	8 0.24 in 2000
9 70.6 in 2017	9 66.0 in 1991	9 3.78 in 2005	9 0.29 in 1973
70.6 in 2003	10 66.3 in 1997	10 3.52 in 1972	10 0.40 in 2006
70.6 in 1988	
12 70.4 in 2018		21 1.58 in 2018	30 1.58 in 2018

Normal Temperature for November at ACHF1 = 68.1°
 Normal Rainfall for November at ACHF1 = 1.98 inches

Warmest Autumns	Coollest Autumns	Wettest Autumns	Driest Autumns
1 78.2 in 2015	1 71.6 in 2008	1 22.87 in 2017	1 4.62 in 1996
2 77.4 in 1986	2 72.5 in 2012	2 22.49 in 1987	2 4.86 in 1990
3 76.6 in 2018	3 72.7 in 2006	3 20.74 in 1969	3 5.52 in 2006
4 76.3 in 1985	4 72.7 in 2000	4 18.09 in 2014	4 5.96 in 1974
5 76.2 in 2017	72.7 in 1976	5 17.33 in 1977	5 6.01 in 2018
6 75.8 in 2016	6 72.8 in 1997	6 17.04 in 2001	6 6.16 in 2010
75.8 in 1973	7 73.0 in 1981	7 16.79 in 1998	7 6.27 in 2008
8 75.7 in 2009	8 73.1 in 1970	8 16.55 in 2016	8 6.53 in 1980
9 75.6 in 1990	9 73.2 in 2014	9 16.32 in 2005	9 7.16 in 1984
10 75.5 in 2007	73.2 in 1984	10 16.23 in 2004	10 7.36 in 2007
75.5 in 1998			

Normal Temperature for Autumn at ACHF1 = 74.1°
 Normal Rainfall for Autumn at ACHF1 = 11.62 inches

PUNTA GORDA AREA (records began in May 1914):

Warmest Novembers	Coollest Novembers	Wettest Novembers	Driest Novembers
1 78.3 in 1948	1 63.9 in 1917	1 5.97 in 1916	1 0.00 in 1931
2 76.8 in 1986	2 64.2 in 1970	2 5.52 in 2002	2 0.02 in 2012
3 76.4 in 2015	64.2 in 1968	3 5.07 in 1987	3 0.05 in 2016
4 75.9 in 1946	4 65.1 in 2008	4 4.60 in 2014	0.05 in 1990
5 74.2 in 1985	5 65.7 in 1969	5 4.54 in 1968	5 0.07 in 2007
6 74.1 in 1958	6 65.8 in 1966	6 4.40 in 1972	6 0.08 in 1940
7 73.8 in 1961	7 66.1 in 1976	7 4.31 in 1921	7 0.09 in 1993
8 73.6 in 1947	66.1 in 1923	8 4.16 in 1951	8 0.10 in 1929
9 73.2 in 2003	9 67.0 in 2012	9 3.92 in 1998	9 0.11 in 1973
10 73.0 in 1960	67.0 in 1939	10 3.91 in 1938	10 0.12 in 1924
	67.0 in 1914		
...
23 71.5 in 2018	80 71.5 in 2018	39 1.91 in 2018	65 1.91 in 2018

Normal Temperature for November at PGD = 69.9°
 Normal Rainfall for November at PGD = 2.01 inches

Warmest Autumns	Coollest Autumns	Wettest Autumns	Driest Autumns
1 79.6 in 1948	1 72.4 in 1917	1 31.25 in 1959	1 5.37 in 2008
2 79.4 in 1986	2 73.0 in 1976	2 24.61 in 1922	2 5.75 in 1961
3 79.1 in 1946	73.0 in 1968	3 23.01 in 1962	3 5.87 in 1974
4 78.7 in 2018	4 73.5 in 1923	4 21.28 in 1953	4 5.91 in 1927
78.7 in 1985	5 73.7 in 1930	5 20.82 in 1995	5 5.95 in 1973
6 78.1 in 2015	6 73.8 in 1914	6 20.64 in 1947	6 6.00 in 1931
78.1 in 1947	7 73.9 in 1943	7 20.39 in 1924	7 6.22 in 1991
8 77.9 in 1960	73.9 in 1940	8 18.72 in 1929	8 6.33 in 1970
77.9 in 1951	9 74.0 in 1970	9 18.66 in 1951	9 6.62 in 1978
10 77.7 in 1961	10 74.1 in 2008	10 18.54 in 1945	10 6.82 in 1920
	74.1 in 1969
	74.1 in 1966	51 12.09 in 2018	51 12.09 in 2018

Normal Temperature for Autumn at PGD = 76.2°
 Normal Rainfall for Autumn at PGD = 12.39 inches

FORT MYERS AREA (records began in January 1902):

Warmest Novembers		Coolest Novembers		Wettest Novembers		Driest Novembers	
1	78.3 in 1986	1	64.7 in 1917	1	8.06 in 1987	1	Trace in 2016
2	76.7 in 2015	2	64.9 in 1910	2	7.58 in 1998		Trace in 2000
3	75.6 in 1985	3	65.4 in 1956	3	5.67 in 2002		Trace in 1944
	75.6 in 1948	4	65.7 in 1949	4	4.60 in 1921	4	0.01 in 1990
5	75.4 in 1994	5	65.9 in 1923	5	4.47 in 2014	5	0.02 in 1950
6	75.0 in 1946	6	66.1 in 1962	6	4.11 in 1997	6	0.03 in 1945
7	74.2 in 1978	7	66.2 in 1969	7	3.85 in 1972	7	0.04 in 1978
8	74.0 in 2017	8	66.3 in 1903	8	3.75 in 2005	8	0.06 in 1905
	74.0 in 1988	9	66.6 in 1950	9	3.71 in 1922	9	0.08 in 1942
10	73.9 in 1992	10	66.7 in 1976	10	3.66 in 1983	10	0.09 in 2008
...			66.7 in 1970				0.09 in 2007
17	73.1 in 2018			0.09 in 1931
				44	1.50 in 2018	73	1.50 in 2018

Normal Temperature for November at FMY = 71.7°
 Normal Rainfall for November at FMY = 1.96 inches

Warmest Autumns		Coolest Autumns		Wettest Autumns		Driest Autumns	
1	80.4 in 1986	1	72.5 in 1903	1	32.14 in 1922	1	5.16 in 1988
2	80.2 in 1985	2	72.7 in 1910	2	27.85 in 1969	2	5.95 in 1942
3	79.1 in 2015	3	72.9 in 1976	3	26.80 in 1924	3	5.96 in 1974
4	78.8 in 1979	4	73.7 in 1908	4	23.34 in 1947	4	5.97 in 1907
5	78.7 in 1994	5	73.8 in 1913	5	23.33 in 1953	5	6.11 in 1992
6	78.5 in 2018	6	74.0 in 1923	6	22.99 in 1962	6	6.12 in 1906
	78.5 in 2007	7	74.1 in 1953	7	21.74 in 1998	7	6.31 in 2004
	78.5 in 1990	8	74.3 in 1909	8	21.44 in 1952	8	6.50 in 1966
9	78.3 in 1988	9	74.4 in 1943	9	20.90 in 2011	9	6.67 in 1978
10	78.2 in 1978		74.4 in 1914	10	20.85 in 1959	10	6.78 in 1904
						11	7.08 in 1961
						12	7.32 in 2018

Normal Temperature for Autumn at FMY = 77.3°
 Normal Rainfall for Autumn at FMY = 13.15 inches

For more local climate information, please visit our web page at <http://weather.gov/tampabay> and look within the "Climate and Past Weather" drop down menu above the map of the area.