



NOAA - National Weather Service

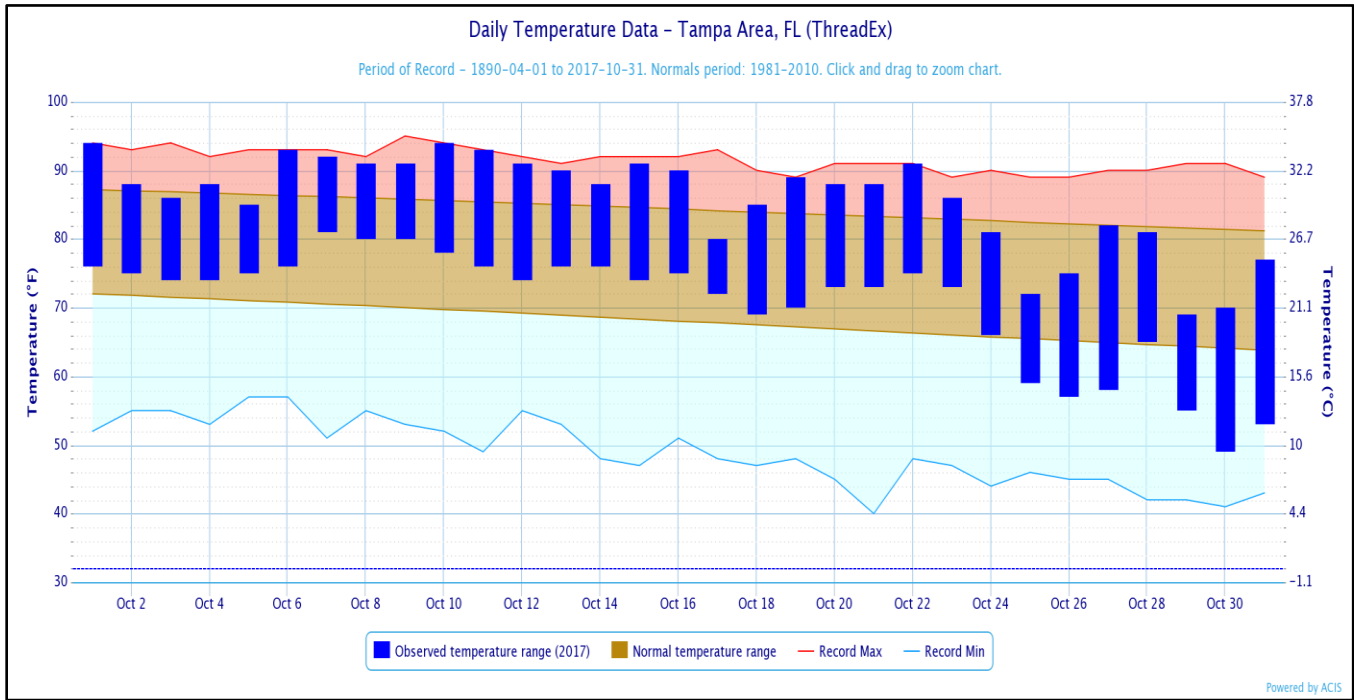
Tampa Bay Area

2525 14th Avenue SE, Ruskin, Florida 33570

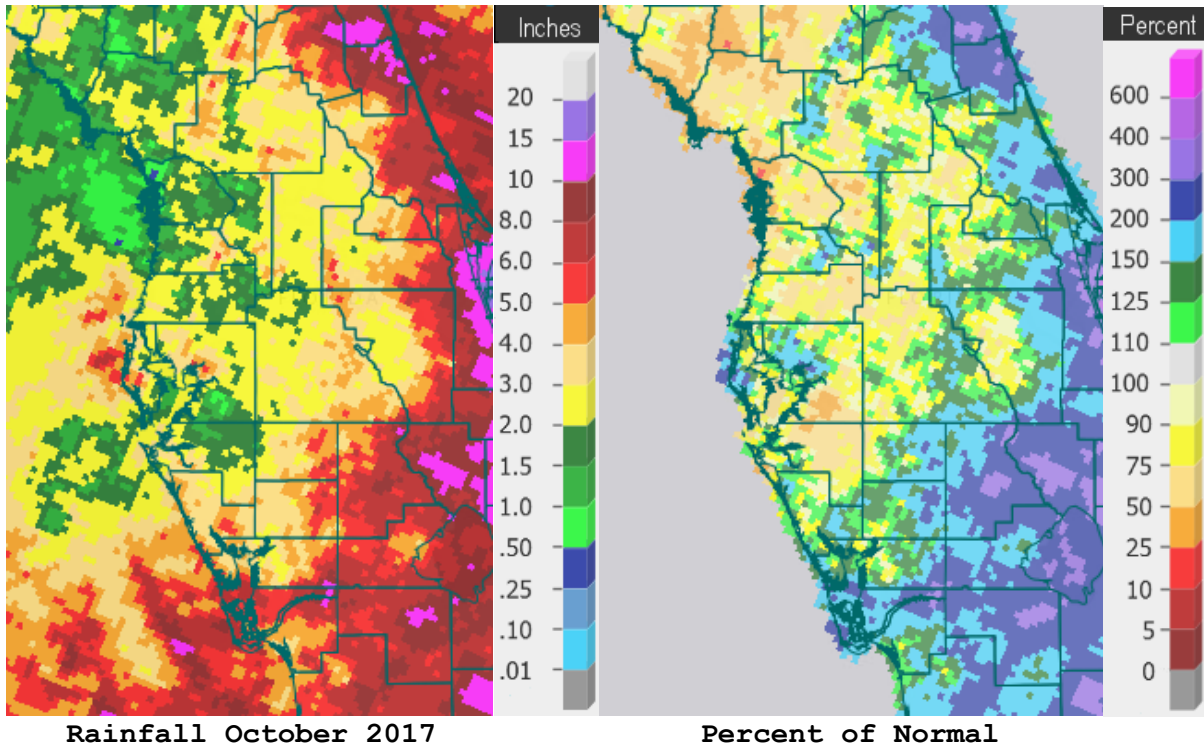
813-645-2323 <http://weather.gov/tampabay>

October 2017 Climate Summary

The first three weeks of October 2017 started out with well above normal temperatures, as can be seen in the graph below for Tampa, with many locations seeing the warmest start to any October. However, during the last week or so cold fronts moved through dropping temperatures 10 to 15 degrees below normal on a couple of days. These cooler temperatures caused most sites to drop out of the Top Ten Warmest for October.



Rainfall on the other hand ranged from as little as one inch in northwestern portions of Levy and Citrus counties to over 6 inches in portions of Highlands and eastern Lee and Charlotte counties. Many areas from the Nature Coast southward through the Tampa Bay area were below normal for the month as indicated by the yellow and orange areas in the below right image.



On the following pages are tables of the Top Ten Warmest, Coolest, Driest, and Wettest Octobers at some official NWS locations, which include the average/total for this October and the 1981-2010 Normal (average) temperature and rainfall for the month of October.

CHIEFLAND 5 SE (records began in June 1956):

Warmest Octobers		Coolest Octobers		Wettest Octobers		Driest Octobers	
1	77.1 in 1959	1	66.9 in 1987	1	8.45 in 1959	1	0.00 in 2010
2	75.5 in 1985	2	67.1 in 1976	2	8.17 in 1997	2	0.11 in 2001
3	75.0 in 1998	3	67.4 in 1977	3	7.32 in 1995	3	0.14 in 1973
4	74.6 in 2002	4	67.6 in 1957	4	7.12 in 1971	4	0.15 in 1979
5	74.5 in 2007	5	67.9 in 1967	5	7.01 in 1993		0.15 in 1974
6	74.2 in 1971		67.9 in 1964	6	6.44 in 1992	6	0.17 in 2000
	74.2 in 1970	7	68.0 in 1974	7	6.41 in 2007	7	0.20 in 1987
8	73.7 in 1995	8	68.5 in 2011	8	6.40 in 2002	8	0.23 in 1981
9	73.5 in 2016	9	68.6 in 2010	9	5.66 in 1983	9	0.24 in 1984
	73.5 in 1990	10	69.0 in 2000	10	5.14 in 1994	10	0.39 in 1977
	73.5 in 1984						

Average Temperature for October 2017 = Not Available (Several Days Missing)
 Normal Temperature for October at CHIF1 = 70.8

Total Rainfall for October 2017 = Not Available (Several Days Missing)
 Normal Rainfall for October at CHIF1 = 3.10

INVERNESS 3 SE (records began in July 1948):

Warmest Octobers		Coolest Octobers		Wettest Octobers		Driest Octobers	
1	78.2 in 1959	1	67.8 in 1987	1	10.60 in 1958	1	Trace in 1974
2	77.3 in 1949	2	68.1 in 1976	2	9.04 in 1992	2	0.03 in 2010
3	76.8 in 2007	3	69.7 in 1977	3	5.81 in 1995		0.03 in 1961
4	76.0 in 1970	4	69.9 in 2011	4	5.71 in 1956	4	0.19 in 1963
5	75.7 in 1995	5	70.1 in 1992	5	5.68 in 1960	5	0.20 in 2000
6	75.6 in 1969	6	70.2 in 1988	6	5.53 in 1959	6	0.62 in 1967
7	75.5 in 1971	7	70.5 in 1997	7	5.38 in 1993	7	0.69 in 2015
	75.5 in 1960	8	70.6 in 1954	8	5.33 in 1975	8	0.70 in 1987
	75.5 in 1950	9	70.8 in 2006	9	4.91 in 1971	9	0.74 in 1977
10	75.3 in 2009		70.8 in 2001	10	4.85 in 1991	10	0.82 in 1982
	75.3 in 1998						0.82 in 1978
...		
21	73.5 in 2017	42	73.5 in 2017	46	1.34 in 2017	22	1.34 in 2017

Normal Temperature for October at INVF1 = 73.0

Normal Rainfall for October at INVF1 = 2.80

BROOKSVILLE AREA (records began in January 1892):

Warmest Octobers		Coolest Octobers		Wettest Octobers		Driest Octobers	
1	78.5 in 1959	1	69.4 in 1920	1	15.64 in 1921	1	0.00 in 2010
	78.5 in 1919	2	69.7 in 1892	2	12.52 in 1915	2	0.01 in 1974
3	78.4 in 1911	3	70.3 in 2010	3	10.77 in 1995	3	0.07 in 2000
4	78.3 in 1941	4	70.4 in 2000	4	9.63 in 1944	4	0.12 in 1984
5	77.1 in 2007		70.4 in 1952	5	8.97 in 1958	5	0.18 in 1951
6	77.0 in 1949	6	70.5 in 1923	6	8.92 in 1922	6	0.22 in 1963
7	76.8 in 1915	7	70.7 in 1953	7	7.58 in 1936	7	0.28 in 1935
8	76.7 in 1928		70.7 in 1924	8	7.50 in 1952	8	0.30 in 1901
	76.7 in 1912	9	70.8 in 1943	9	6.87 in 1911	9	0.35 in 1977
10	76.6 in 1936	10	70.9 in 2008	10	6.35 in 1910	10	0.36 in 1979
			70.9 in 1896				
...		
31	74.8 in 2017	72	74.8 in 2017	68	2.01 in 2017	57	2.01 in 2017
	in 1984		in 1984				
	in 1947		in 1947				
	in 1904		in 1904				

Normal Temperature for October at BKV = 72.8

Normal Rainfall for October at BKV = 2.73

ST LEO (records began in April 1895):

Warmest Octobers		Coolest Octobers		Wettest Octobers		Driest Octobers	
1	79.6 in 1985	1	69.2 in 1930	1	15.80 in 1921	1	0.00 in 2010
2	78.9 in 2002	2	69.4 in 1903	2	10.38 in 1924	2	0.03 in 2000
3	78.8 in 1941	3	69.9 in 1920	3	9.66 in 1910	3	0.10 in 1974
4	78.6 in 2007	4	70.0 in 1943	4	8.45 in 1922		0.10 in 1940
5	78.4 in 2009	5	70.1 in 1987	5	7.89 in 2007	5	0.14 in 1963
	78.4 in 1959	6	70.4 in 2011	6	7.49 in 1944	6	0.23 in 1984
7	78.0 in 1919	7	70.5 in 1992	7	7.23 in 2012	7	0.29 in 1978
8	77.3 in 1949	8	70.7 in 1917	8	7.11 in 1938		0.29 in 1961
	77.3 in 1925	9	70.9 in 1976	9	6.68 in 1959	9	0.30 in 1920
10	77.2 in 1971	10	71.0 in 1938	10	6.55 in 1915		0.30 in 1907
	77.2 in 1900		71.0 in 1929	
...		...		80	1.63 in 2017	41	1.63 in 2017
38	75.3 in 2017	82	75.3 in 2017		in 1908		in 1908
	in 1966		in 1966				
	in 1947		in 1947				
	in 1946		in 1946				

Normal Temperature for October at STL1 = 75.3

Normal Rainfall for October at STL1 = 3.01

TARPON SPRINGS (records began in January 1892):

Warmest Octobers		Coolest Octobers		Wettest Octobers		Driest Octobers	
1	81.2 in 1919	1	70.3 in 1987	1	14.13 in 1995	1	0.02 in 2010
2	79.7 in 1985	2	71.0 in 1940	2	12.43 in 1921	2	0.04 in 2000
3	79.0 in 1941	3	71.1 in 1913	3	10.91 in 1938	3	0.06 in 1940
4	78.7 in 2007	4	71.2 in 1974	4	10.33 in 1911	4	0.07 in 1974
5	78.5 in 1911		71.2 in 1943	5	9.49 in 1975	5	0.08 in 1963
6	78.2 in 1949	6	71.5 in 1938	6	9.20 in 1992	6	0.11 in 1961
7	77.9 in 1995	7	71.5 in 1907	7	8.13 in 1922	7	0.12 in 1942
	77.9 in 1918	8	71.6 in 1917	8	7.57 in 1917	8	0.25 in 1905
9	77.6 in 1959		71.6 in 1908	9	6.89 in 1936	9	0.31 in 1979
	77.6 in 1925		71.6 in 1892	10	6.38 in 1968	10	0.34 in 1903
...		
16	76.8 in 2017			54	2.69 in 2017	73	2.69 in 2017
	in 2009						
	in 1994						
	in 1933						

Normal Temperature for October at TRPF1 = 74.5

Normal Rainfall for October at TRPF1 = 3.31

TAMPA AREA (records began in April 1890):

Warmest Octobers	Coollest Octobers	Wettest Octobers	Driest Octobers
1 80.4 in 1919	1 70.0 in 1891	1 10.33 in 1922	1 Trace in 2010
2 79.8 in 2007	2 70.8 in 1964	2 9.88 in 1921	2 0.02 in 1940
3 79.6 in 1959	3 70.9 in 1976	3 7.36 in 1952	3 0.03 in 1942
4 79.4 in 1941	4 71.3 in 1987	4 6.94 in 1938	4 0.06 in 2000
5 79.2 in 1985	5 71.7 in 1943	5 6.26 in 1959	5 0.09 in 1988
6 78.8 in 2002	71.7 in 1913	6 6.21 in 1986	6 0.12 in 1920
7 78.3 in 1911	71.7 in 1908	7 5.67 in 1944	7 0.16 in 1979
8 78.2 in 2017	71.7 in 1903	8 5.66 in 1911	8 0.23 in 1974
9 78.1 in 2016	9 71.8 in 1957	9 5.25 in 1924	9 0.25 in 1961
10 78.0 in 2015	10 72.0 in 1938	10 5.11 in 1900	10 0.29 in 1984
78.0 in 2009			0.29 in 1963
	
		44 3.07 in 2017	85 3.07 in 2017

Normal Temperature for October at TPA = 76.2

Normal Rainfall for October at TPA = 2.26

ST PETERSBURG (records began in August 1914):

Warmest Octobers	Coollest Octobers	Wettest Octobers	Driest Octobers
1 81.7 in 1985	1 72.3 in 1952	1 17.63 in 1986	1 0.00 in 1942
2 81.4 in 1919	2 73.0 in 1987	2 14.12 in 1952	2 Trace in 2010
3 80.6 in 1941	73.0 in 1938	3 10.05 in 1922	3 0.12 in 2000
4 80.0 in 2002	4 73.1 in 1964	4 9.55 in 1938	4 0.14 in 1974
5 79.9 in 1959	5 73.2 in 1953	5 9.13 in 1921	5 0.20 in 1998
6 79.8 in 2013	6 73.4 in 1957	6 8.59 in 1959	6 0.29 in 1961
79.8 in 2007	73.4 in 1920	7 8.14 in 1918	7 0.30 in 1988
79.8 in 2005	8 73.5 in 1943	8 8.09 in 1944	8 0.31 in 1963
9 79.7 in 1971	73.5 in 1917	9 6.77 in 1917	9 0.35 in 1940
10 79.1 in 2009	10 74.0 in 2011	10 6.27 in 1975	10 0.37 in 1979
79.1 in 1972	74.0 in 1956
	74.0 in 1954	53 2.11 in 2017	52 2.11 in 2017
...	...		
31 77.9 in 2017	73 77.9 in 2017		
in 1915	in 1915		

Normal Temperature for October at SPG = 77.2

Normal Rainfall for October at SPG = 2.78

PLANT CITY (records began in September 1892):

Warmest Octobers	Coollest Octobers	Wettest Octobers	Driest Octobers
1 78.9 in 1959	1 69.8 in 1940	1 10.43 in 1959	1 0.04 in 2000
2 78.8 in 1985	2 70.0 in 1930	2 9.01 in 1938	2 0.09 in 1940
3 78.5 in 1918	3 70.2 in 1943	3 8.05 in 1924	3 0.10 in 2010
4 78.0 in 2007	70.2 in 1929	4 7.18 in 1917	4 0.14 in 1963
78.0 in 1941	5 70.6 in 2000	5 6.86 in 1975	5 0.16 in 1979
6 77.9 in 2002	70.6 in 1987	6 6.66 in 1952	6 0.21 in 1907
7 77.6 in 1971	70.6 in 1938	7 6.43 in 1898	7 0.28 in 1988
8 77.4 in 1969	8 71.1 in 1913	8 6.32 in 1969	8 0.29 in 1961
9 77.3 in 2009	9 71.2 in 1909	9 5.62 in 1986	9 0.37 in 1926
10 77.2 in 1949	10 71.3 in 1944	10 5.45 in 1995	10 0.44 in 1981
	71.3 in 1942		

Average Temperature for October 1-27, 2017 = 77.0

Normal Temperature for October at PLCF1 = 75.0

Total Rainfall for October 1-27, 2017 = 2.52

Normal Rainfall for October at PLCF1 = 2.36

LAKELAND AREA (records began in January 1915):

Warmest Octobers	Coollest Octobers	Wettest Octobers	Driest Octobers
1 79.9 in 1985	1 70.9 in 1976	1 9.19 in 2005	1 0.00 in 2010
2 78.8 in 1941	2 71.0 in 1943	2 7.73 in 1922	2 0.04 in 1974
78.8 in 1919	3 71.2 in 1964	3 6.93 in 1917	3 0.11 in 1973
4 78.6 in 2009	4 71.8 in 1974	4 6.72 in 1952	4 0.16 in 2000
78.6 in 1959	71.8 in 1957	5 6.63 in 1959	5 0.18 in 1940
6 78.5 in 2007	71.8 in 1938	6 6.50 in 2011	6 0.19 in 1935
7 78.1 in 2002	7 71.9 in 1930	7 6.29 in 1938	7 0.23 in 1978
8 78.0 in 1986	8 72.0 in 1924	8 6.23 in 1982	8 0.25 in 1942
9 77.9 in 1918	9 72.1 in 1952	9 6.00 in 2007	9 0.29 in 1926
10 77.8 in 1934	10 72.2 in 1967	10 5.75 in 1971	10 0.33 in 1963
11 77.6 in 1990	72.2 in 1953
12 77.2 in 1993	72.2 in 1944	34 3.32 in 2017	69 3.32 in 2017
77.2 in 1949			
14 77.1 in 2017			
in 2015			
in 1994			
in 1971			

Normal Temperature for October at LLDF1 = 74.9

Normal Rainfall for October at LLDF1 = 2.88

WINTER HAVEN AREA (records began in January 1941):

Warmest Octobers	Coollest Octobers	Wettest Octobers	Driest Octobers
1 79.3 in 1941	1 70.9 in 1987	1 9.43 in 1952	1 0.02 in 2010
2 79.0 in 1985	2 71.7 in 1977	2 9.42 in 1959	2 0.16 in 2000
3 78.9 in 2007	3 72.2 in 1976	3 8.00 in 2011	3 0.17 in 2004
78.9 in 1959	72.2 in 1943	4 7.60 in 1950	4 0.43 in 2009
5 78.8 in 1998	5 72.6 in 2011	5 7.15 in 1956	0.43 in 1974
6 78.7 in 2002	72.6 in 1974	6 6.90 in 1944	6 0.46 in 1963
7 78.5 in 1995	7 73.0 in 1958	7 6.77 in 1995	7 0.55 in 1989
8 78.4 in 2009	73.0 in 1957	8 6.47 in 2005	8 0.61 in 2015
9 78.2 in 1971	9 73.1 in 2000	9 6.13 in 2002	0.61 in 1942
10 77.9 in 1986	73.1 in 1944	10 5.66 in 1969	10 0.63 in 1979
77.9 in 1969			

Average Temperature for October 2017 = Not Available (Several days missing)
Normal Temperature for October at GIF = 75.7

Total Rainfall for October 2017 = Not Available (Several days missing)
Normal Rainfall for October at GIF = 2.80

BARTOW (records began in June 1892):

Warmest Octobers	Coollest Octobers	Wettest Octobers	Driest Octobers
1 79.8 in 2013	1 70.6 in 1913	1 12.55 in 1910	1 0.00 in 2000
2 79.3 in 1919	2 71.2 in 1894	2 10.22 in 1924	2 0.13 in 1940
3 79.1 in 2007	3 71.3 in 1940	3 9.10 in 1959	3 0.20 in 2013
4 78.9 in 1959	71.3 in 1892	4 8.98 in 1952	0.20 in 1963
5 78.8 in 2002	5 71.4 in 1977	5 8.75 in 2011	5 0.23 in 1998
6 78.4 in 1911	6 71.5 in 1976	6 8.43 in 1917	6 0.30 in 2010
7 78.3 in 2009	7 71.7 in 1929	7 8.18 in 1922	7 0.31 in 1974
78.3 in 1902	8 71.9 in 2011	8 7.90 in 1894	8 0.34 in 1973
9 78.1 in 1998	9 72.0 in 1895	9 7.40 in 1938	9 0.36 in 1901
78.1 in 1995	10 72.1 in 1924	10 7.26 in 1950	10 0.37 in 1942
78.1 in 1949	72.1 in 1920
78.1 in 1941		52 2.79 in 2017	74 2.79 in 2017
...	...		
34 76.2 in 2017	79 76.2 in 2017		
in 1947	in 1947		
in 1933	in 1933		

Normal Temperature for October at BARF1 = 76.0
Normal Rainfall for October at BARF1 = 2.91

SARASOTA-BRADENTON AREA (records began in January 1911):

Warmest Octobers		Coolest Octobers		Wettest Octobers		Driest Octobers	
1	80.4 in 2007	1	70.6 in 1976	1	12.50 in 1952	1	0.00 in 1942
2	79.5 in 1959	2	71.0 in 1943	2	12.02 in 1922	2	Trace in 2010
3	79.2 in 2016	3	71.2 in 1940	3	10.48 in 1938	3	0.02 in 1963
	79.2 in 1919	4	71.4 in 1913	4	7.31 in 1918	4	0.04 in 1973
5	78.9 in 1985	5	71.5 in 1977	5	7.23 in 1957	5	0.10 in 2000
6	78.5 in 1941	6	71.6 in 1987	6	7.22 in 1924		0.10 in 1940
7	78.4 in 2002	7	71.7 in 1930	7	7.21 in 1921	7	0.31 in 1920
	78.4 in 1995	8	71.8 in 1938	8	7.11 in 1990	8	0.44 in 1974
9	78.2 in 1971		71.8 in 1929	9	7.09 in 1993	9	0.45 in 1984
10	78.0 in 1969	10	72.0 in 1944	10	6.74 in 2007	10	0.53 in 1949
	78.0 in 1936			
	78.0 in 1918			48	2.82 in 2017	59	2.82 in 2017
...					in 1934		in 1934
19	77.1 in 2017						
	in 2015						
	in 2012						
	in 1949						

Normal Temperature for October at SRQ = 76.3

Normal Rainfall for October at SRQ = 3.12

VENICE (records began in April 1955):

Warmest Octobers		Coolest Octobers		Wettest Octobers		Driest Octobers	
1	80.4 in 2009	1	70.8 in 1987	1	12.83 in 1995	1	0.00 in 2010
2	79.5 in 2002	2	71.4 in 1976	2	9.90 in 2005	2	0.08 in 1981
3	79.2 in 1959	3	72.1 in 1974	3	9.61 in 1959	3	0.09 in 1963
4	79.0 in 2012	4	72.2 in 1977	4	8.48 in 1982	4	0.18 in 2000
	79.0 in 1985	5	73.0 in 1968	5	7.78 in 1986	5	0.20 in 1974
6	78.9 in 1998	6	73.3 in 1957	6	7.73 in 1967	6	0.36 in 1998
7	78.8 in 1995	7	73.6 in 2008	7	7.45 in 1993	7	0.56 in 1970
8	78.7 in 2007		73.6 in 2000	8	6.65 in 1983	8	0.72 in 2003
9	78.3 in 1971	9	74.1 in 1964	9	6.39 in 1969	9	0.73 in 1973
10	78.1 in 2013	10	74.4 in 1967	10	6.21 in 1958	10	0.74 in 1961
...				
15	77.4 in 2017			26	3.17 in 2017	38	3.17 in 2017
	in 1970						

Normal Temperature for October at VNCF1 = 75.6

Normal Rainfall for October at VNCF1 = 3.57

MYAKKA RIVER STATE PARK (Temperature records began in March 1956
and Rainfall records began in Sep 1943):

Warmest Octobers		Coolest Octobers		Wettest Octobers		Driest Octobers	
1	79.6 in 2007	1	71.5 in 1987	1	10.01 in 1951	1	0.00 in 2010
2	79.5 in 1985	2	72.0 in 1992	2	9.32 in 1952		0.00 in 1974
3	79.0 in 1991	3	72.5 in 1977	3	8.59 in 1995	3	0.10 in 2000
4	78.9 in 1998		72.5 in 1957	4	7.70 in 1959	4	0.30 in 1963
5	78.1 in 1975	5	72.6 in 1976	5	6.81 in 1999	5	0.44 in 1973
6	78.0 in 1959	6	72.8 in 1963	6	6.65 in 2005	6	0.61 in 1978
7	77.9 in 1990	7	73.2 in 1974	7	6.54 in 1994		0.61 in 1977
	77.9 in 1983	8	73.5 in 1958	8	6.40 in 1943	8	0.85 in 1962
9	77.8 in 2009	9	73.6 in 1962	9	6.29 in 1957	9	1.01 in 1955
10	77.7 in 1995	10	73.7 in 2011	10	6.24 in 1958	10	1.03 in 1980
...				
15	77.1 in 2017			38	2.69 in 2017	36	2.69 in 2017

Normal Temperature for October at MKCF1 = 75.9

Normal Rainfall for October at MKCF1 = 3.27

WAUCHULA 2 N (records began in January 1933):

Warmest Octobers		Coolest Octobers		Wettest Octobers		Driest Octobers	
1	80.8 in 2007	1	70.6 in 1943	1	10.36 in 1975	1	0.00 in 2000
2	79.8 in 2009	2	71.2 in 2011	2	9.67 in 1952	2	Trace in 1940
3	79.4 in 1985	3	71.4 in 2000	3	9.38 in 1938	3	0.10 in 1974
4	79.3 in 1941	4	71.8 in 1987	4	8.64 in 1995	4	0.22 in 1981
5	78.8 in 1959		71.8 in 1944	5	8.27 in 2011	5	0.27 in 1963
6	78.3 in 1936	6	71.9 in 2010	6	6.85 in 1950	6	0.36 in 1984
7	77.7 in 1939	7	72.0 in 1954	7	6.21 in 1953	7	0.45 in 1979
8	77.4 in 1990	8	72.2 in 1977	8	5.61 in 1999	8	0.53 in 2006
9	77.2 in 1995		72.2 in 1953	9	5.55 in 2005	9	0.57 in 1961
	77.2 in 1986	10	72.4 in 1964		5.55 in 1945	10	0.59 in 1973
...		
24	76.1 in 2017	56	76.1 in 2017	14	5.03 in 2017		

Normal Temperature for October at WAUF1 = 76.7

Normal Rainfall for October at WAUF1 = 2.64

ARCADIA (records began in January 1899):

Warmest Octobers	Coollest Octobers	Wettest Octobers	Driest Octobers
1 80.0 in 1919	1 70.5 in 1990	1 13.98 in 1952	1 Trace in 1942
2 78.6 in 1911	2 71.2 in 1943	2 13.16 in 1910	2 0.05 in 2010
3 78.4 in 1959	3 71.5 in 2000	3 10.82 in 1953	0.05 in 2009
78.4 in 1941	71.5 in 1977	4 9.73 in 1924	0.05 in 1961
5 78.1 in 2007	71.5 in 1976	5 8.67 in 1968	5 0.18 in 1974
78.1 in 1936	6 71.7 in 1938	6 8.26 in 1959	0.18 in 1940
7 78.0 in 1985	71.7 in 1920	7 8.12 in 1986	7 0.21 in 2003
78.0 in 1912	8 71.8 in 1954	8 7.75 in 1922	8 0.25 in 2001
9 77.9 in 1951	9 71.9 in 1944	9 7.64 in 1969	9 0.26 in 1981
10 77.6 in 1902	10 72.3 in 1987	10 7.62 in 1904	0.26 in 1901
	72.3 in 1940		
...
43 75.5 in 2017	61 75.5 in 2017	62 2.11 in 2017	51 2.11 in 2017
in 2016	in 2016		
in 1993	in 1993		
in 1914	in 1914		

Normal Temperature for October at ARCF1 = 74.9

Normal Rainfall for October at ARCF1 = 2.59

ARCHBOLD BIO STN (records began in January 1969):

Warmest Octobers	Coollest Octobers	Wettest Octobers	Driest Octobers
1 79.0 in 2007	1 71.9 in 1977	1 9.24 in 1979	1 0.00 in 2010
2 77.9 in 1995	2 72.0 in 1987	2 8.40 in 2004	2 0.13 in 1984
77.9 in 1985	72.0 in 1976	3 7.15 in 2001	3 0.25 in 2003
4 77.0 in 2016	4 72.4 in 2011	4 6.95 in 2014	4 0.40 in 1980
5 76.8 in 2015	5 72.5 in 2010	5 6.89 in 2012	5 0.47 in 2009
6 76.7 in 2009	72.5 in 2000	6 6.63 in 1982	6 0.53 in 1990
76.7 in 2002	72.5 in 1992	7 5.18 in 1973	7 0.56 in 1974
76.7 in 1975	8 72.6 in 1988	8 4.68 in 1987	8 0.68 in 1997
9 76.5 in 1998	9 72.7 in 2008	9 4.52 in 1977	9 0.96 in 1979
76.5 in 1990	10 72.9 in 1997	10 4.37 in 2003	10 0.98 in 1981
76.5 in 1986			

Average Temperature for October 1-27, 2017 = 78.8

Normal Temperature for October at ACHF1 = 74.6

Total Rainfall for October 1-27, 2017 = 4.11

Normal Rainfall for October at ACHF1 = 3.18

PUNTA GORDA 4 ESE (records began in May 1914):

Warmest Octobers	Coollest Octobers	Wettest Octobers	Driest Octobers
1 80.6 in 1949	1 72.9 in 1976	1 13.99 in 1924	1 0.00 in 2010
2 80.4 in 1951	2 73.0 in 1938	2 12.21 in 1959	0.00 in 1942
3 80.3 in 1959	3 73.1 in 1987	3 11.60 in 1952	3 Trace in 1940
4 80.2 in 2007	73.1 in 1940	4 10.88 in 1995	4 0.10 in 1981
5 80.0 in 1985	5 73.3 in 1974	5 10.03 in 1951	5 0.16 in 1973
6 79.8 in 1919	73.3 in 1930	6 9.64 in 1945	6 0.26 in 1961
7 79.6 in 1960	7 73.4 in 1929	7 9.18 in 1922	7 0.28 in 2003
8 79.5 in 2009	8 73.5 in 1977	8 8.86 in 1996	8 0.34 in 2009
9 79.4 in 1946	9 73.7 in 1917	9 8.76 in 2011	9 0.56 in 1974
10 79.3 in 2002	10 73.8 in 1943	10 8.20 in 1953	10 0.63 in 1979
...	
19 78.4 in 2017 in 1941		50 2.75 in 2017	51 2.75 in 2017

Normal Temperature for October at PNTF1 = 76.9

Normal Rainfall for October at PNTF1 = 2.93

FORT MYERS AREA (records began in January 1902):

Warmest Octobers	Coollest Octobers	Wettest Octobers	Driest Octobers
1 81.7 in 1985	1 72.5 in 1903	1 19.70 in 1924	1 0.05 in 1963
2 81.1 in 2007	2 72.6 in 1976	2 12.04 in 1959	2 0.16 in 1973
3 80.4 in 1919	3 73.3 in 1913	3 11.91 in 1951	3 0.19 in 1974
4 80.0 in 1995	4 73.5 in 1953	4 11.08 in 1922	4 0.30 in 1935
80.0 in 1959	5 73.6 in 1957	5 11.03 in 1969	5 0.39 in 1979
6 79.8 in 1981	73.6 in 1908	6 10.80 in 1921	6 0.40 in 1988
7 79.4 in 2002	7 73.7 in 1943	7 10.73 in 2011	0.40 in 1981
79.4 in 1990	8 74.0 in 1977	8 9.26 in 1910	8 0.43 in 1977
79.4 in 1986	74.0 in 1920	9 8.34 in 1952	9 0.45 in 2010
10 79.2 in 1936	10 74.1 in 1940	10 8.17 in 2005	10 0.50 in 1942
	74.1 in 1910		
...
58 77.0 in 2017 in 1999 in 1933	57 77.0 in 2017 in 1999 in 1933	36 4.19 in 2017	77 4.19 in 2017

Normal Temperature for October at FMY = 77.9

Normal Rainfall for October at FMY = 2.88

For more local climate information, please visit our web page at <http://www.weather.gov/tampabay> and look within the "Climate and Past Weather" drop down menu above the map of the area.

Contact: Paul Close, Paul.Close@noaa.gov

Date: 11/06/2017