



# Drought Information Statement for MONTANA

Valid: September 16, 2025

Issued By: NWS Great Falls, NWS Missoula, NWS Glasgow, NWS Billings  
Contact Information:

- This product will be updated, October 16, 2025, or sooner, if drought conditions change, significantly.
  - Please see all currently available products at <https://drought.gov/drought-information-statements>.
  - Please visit <https://www.weather.gov/TFX/DroughtInformationStatement> for previous statements.
- 
- D3 - Extreme Drought conditions continue across portions of western and central Montana.





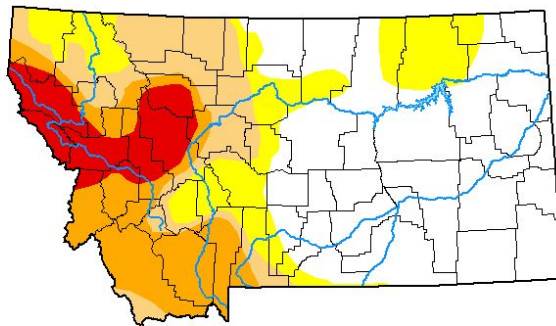
# U.S. Drought Monitor

Link: [Latest Montana U.S. Drought Monitor](#)

## U.S. Drought Monitor Montana

### • Drought intensity and Extent

- **D4 (Exceptional Drought)**: None
- **D3 (Extreme Drought)**: Portions of western and central MT
- **D2 (Severe Drought)**: Portions of western and central MT
- **D1 (Moderate Drought)**: Portions of western and central MT
- **D0: (Abnormally Dry)**: Portions of western, central and northeastern MT



**September 9, 2025**

(Released Thursday, Sep. 11, 2025)

Valid 8 a.m. EDT

*Drought Conditions (Percent Area)*

	None	D0-D4	D1-D4	D2-D4	D3-D4	D4
<b>Current</b>	47.39	52.61	36.06	22.93	8.55	0.00
<b>Last Week</b> 09-02-2025	48.53	51.47	36.06	22.33	8.24	0.00
<b>3 Months Ago</b> 06-10-2025	18.45	81.55	58.93	26.47	0.75	0.00
<b>Start of Calendar Year</b> 01-01-2025	6.70	93.30	54.22	27.25	13.79	0.00
<b>Start of Water Year</b> 10-01-2024	15.18	84.82	42.24	21.05	9.44	0.90
<b>One Year Ago</b> 09-10-2024	0.00	100.00	62.94	23.91	9.33	0.90

#### Intensity

None	D2 Severe Drought
D0 Abnormally Dry	D3 Extreme Drought
D1 Moderate Drought	D4 Exceptional Drought

*The Drought Monitor focuses on broad-scale conditions. Local conditions may vary. For more information on the Drought Monitor, go to <https://droughtmonitor.unl.edu/About.aspx>*

#### Author:

Brad Pugh  
CPC/NOAA



[droughtmonitor.unl.edu](https://droughtmonitor.unl.edu)



National Oceanic and  
Atmospheric Administration  
U.S. Department of Commerce

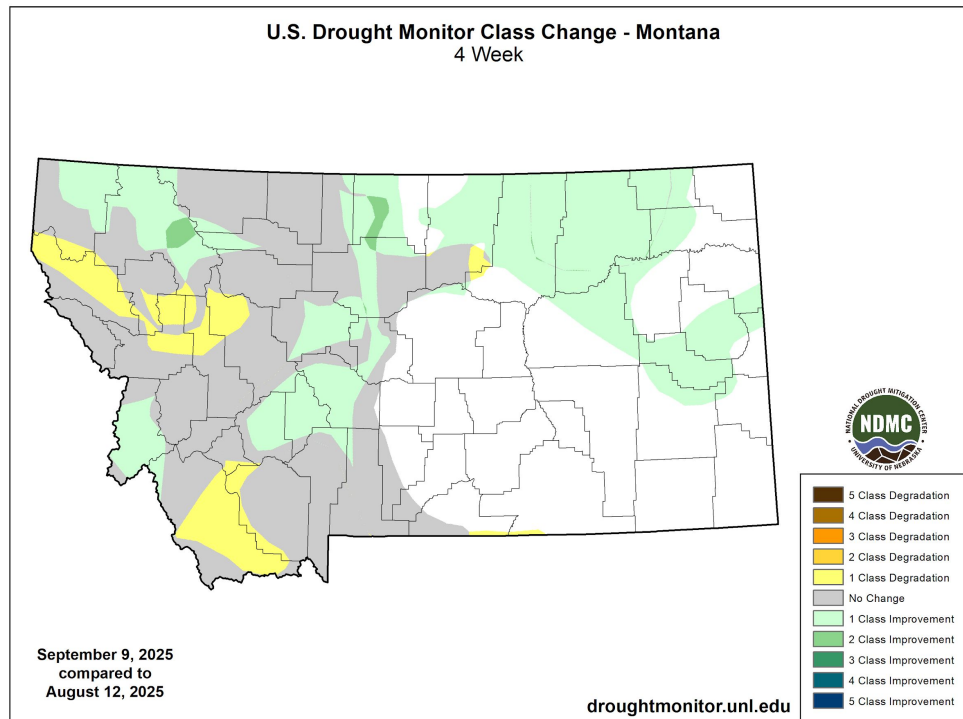
National Weather Service  
Great Falls, Montana



# Recent Change in Drought Intensity

Link: [Montana 4-week Change Map](#)

- Four Week Drought Monitor Class Change
  - **Drought Worsened:** Portions of western, and central MT
  - **No Change:** Much of the western half of the state
  - **Drought Improved:** Areas across the state



National Oceanic and  
Atmospheric Administration

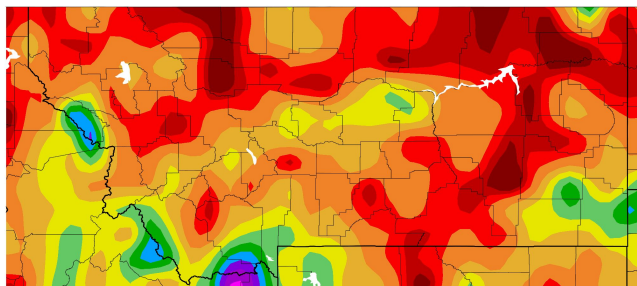
U.S. Department of Commerce

National Weather Service  
Great Falls, Montana



# Precipitation

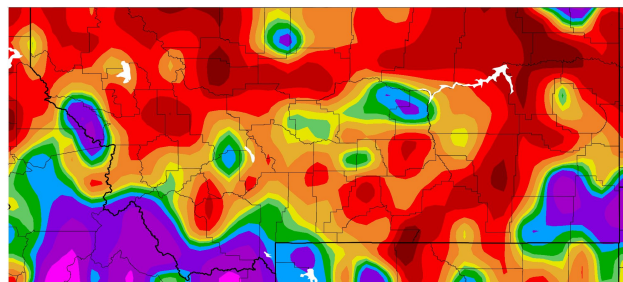
Precipitation (in)  
8/16/2025 – 9/14/2025



Generated 9/15/2025 using provisional data.

ACIS Web Services

Percent of Normal Precipitation (%)  
8/16/2025 – 9/14/2025



Generated 9/15/2025 using provisional data.

ACIS Web Services

- **Precipitation (in):** During the past month, most of the state received less than 1.5 inches of precipitation, while a few isolated areas receiving 2 inches or more.
- **Percent of Normal Precipitation (%):** Most of The Treasure State received below normal precipitation, while some isolated areas received above normal moisture.

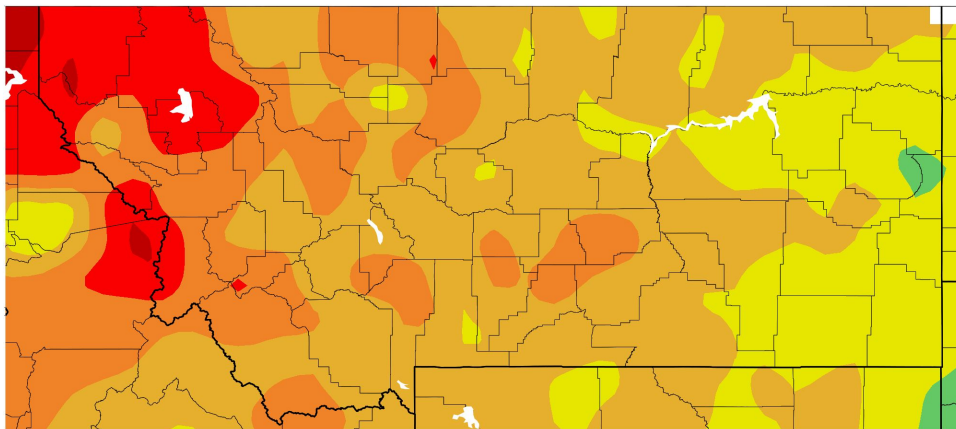




# Temperature

Departure from Normal Temperature (F)  
8/16/2025 – 9/14/2025

- Warmer than normal temperatures were recorded for most of the state of MT, with western MT realizing temperatures as high as 8 to 10 degrees above normal.



Generated 9/15/2025 using provisional data.

ACIS Web Services



**National Oceanic and  
Atmospheric Administration**  
U.S. Department of Commerce

**National Weather Service**  
**Great Falls, Montana**





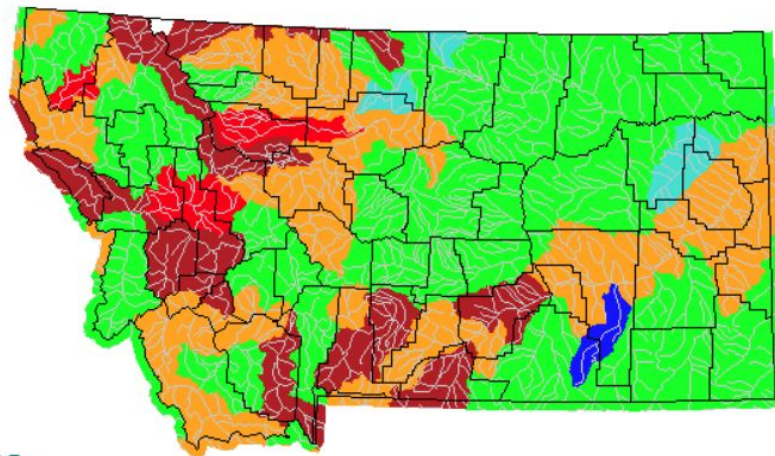
# Hydrologic Conditions and Impacts

Link: [USGS 7-day Average Streamflow Compared to Historical](#)

## USGS 7-Day Average Streamflow HUC Map

Sunday, September 14, 2025

- **Above Normal:** A few isolated areas of above normal to much above normal streamflow are located in central and eastern MT.
- **Normal:** Much of Montana's streamflow is reported within normal range.
- **Below Normal:** Significant portions of the watersheds across the state are experiencing streamflow in the below normal to low range.



Explanation - Percentile classes							
Low	<10	10-24	25-75	76-90	>90	High	No Data
	Much below normal	Below normal	Normal	Above normal	Much above normal		

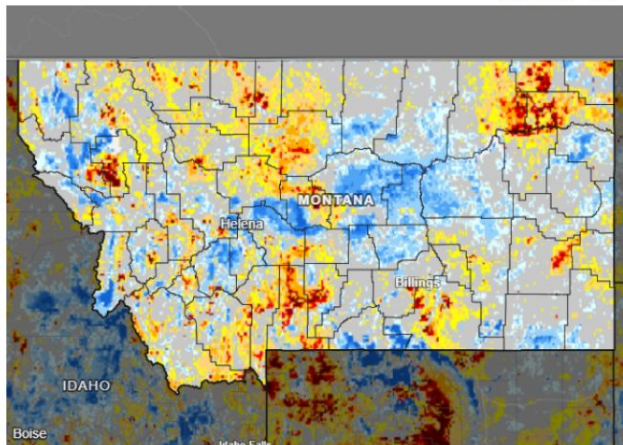




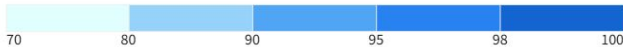
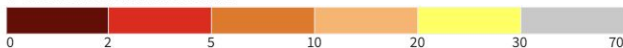
# Agricultural Impacts

Link: [drought.gov/states/montana](https://drought.gov/states/montana)

NASA SPoRT-LIS 0-100 cm Soil Moisture Percentile



0-100 cm Soil Moisture Percentile



An accurate depiction of soil moisture conditions can provide valuable insights for agricultural monitoring, weather prediction, and drought and flood early warning. This map shows the moisture content of the top 1 meter of soil compared to historical conditions from 1981-2013, based on NASA's Short-term Prediction and Transition Center - Land Information System (SPoRT-LIS). Red and orange hues indicate drier soils, while greens and blues indicate greater soil moisture.

Source(s): NASA

Data Valid: 09/14/25

**Drought.gov**

- The Soil Moisture Percentile map shows large areas of continuing dry conditions.
- Soil Moisture Percentile is at 80% and above across a significant portion of central MT.



**National Oceanic and  
Atmospheric Administration**

U.S. Department of Commerce

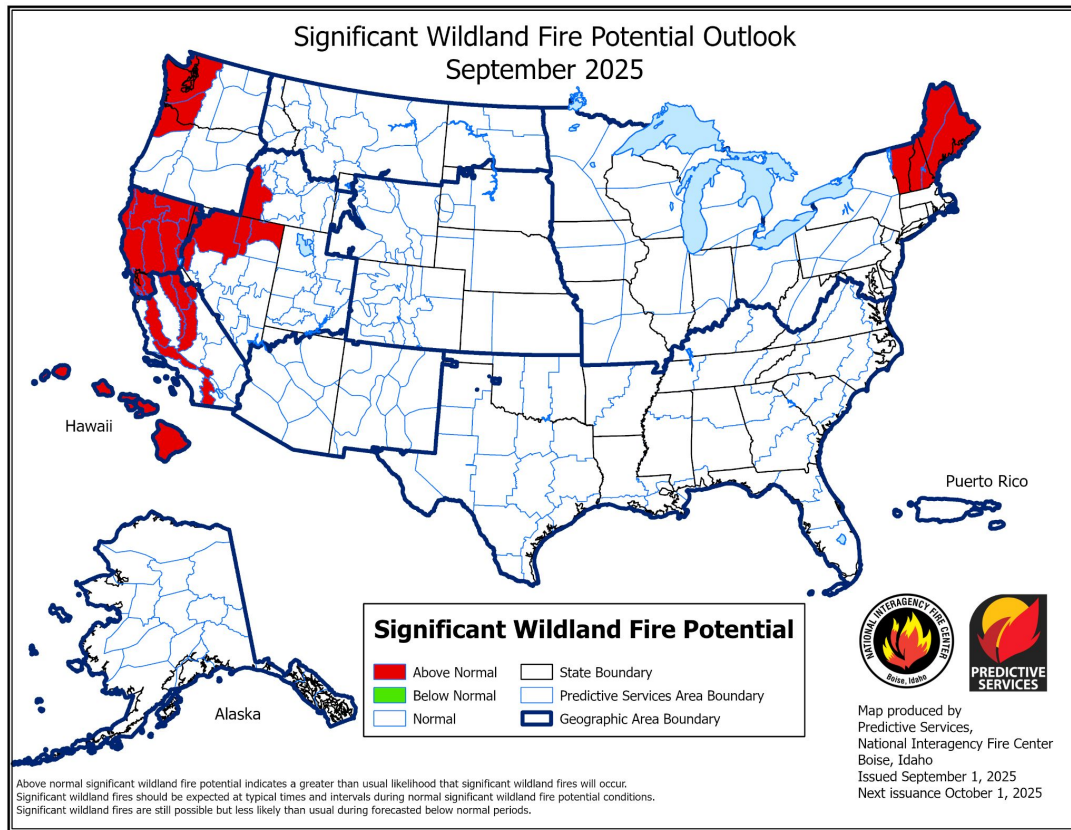
National Weather Service  
Great Falls, Montana



# Fire Hazard Impacts

Link: [Wildfire Potential Outlooks from the National Interagency Coordination Center](#)

- For the month of September, the state of MT is included in an area of normal significant wildland fire potential conditions.
  - Significant wildland fires should be expected at typical times and intervals.



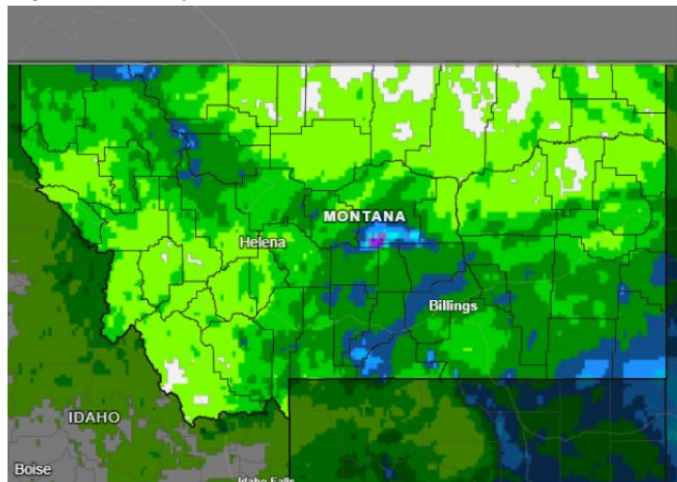




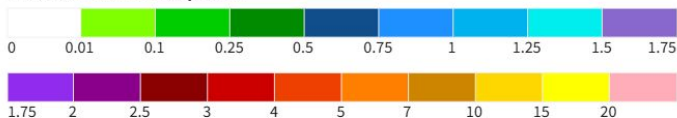
# 7-Day Precipitation Forecast

Link: [drought.gov/states/montana](https://drought.gov/states/montana)

7-Day Quantitative Precipitation Forecast for  
September 15–22, 2025



Predicted Inches of Precipitation



This map shows the amount of liquid precipitation (in inches) expected to fall over the next 7 days, according to the National Weather Service.

Source(s): National Weather Service Weather Prediction Center  
Last Updated: 09/15/25

**Drought.gov**

- Through, September 22, 2025, the liquid precipitation forecast, generally, shows modest amounts of moisture of up to 0.1” across much of western, north central and northeastern MT.
- Some higher elevation areas are forecast to receive up to an inch or more of precipitation.
- Much of northwestern MT, portions of central MT and much of southeastern MT are forecast to receive up to 0.5” of moisture.



**National Oceanic and  
Atmospheric Administration**  
U.S. Department of Commerce

National Weather Service  
Great Falls, Montana



# 8 to 14-Day Hydrologic Hazards Outlook

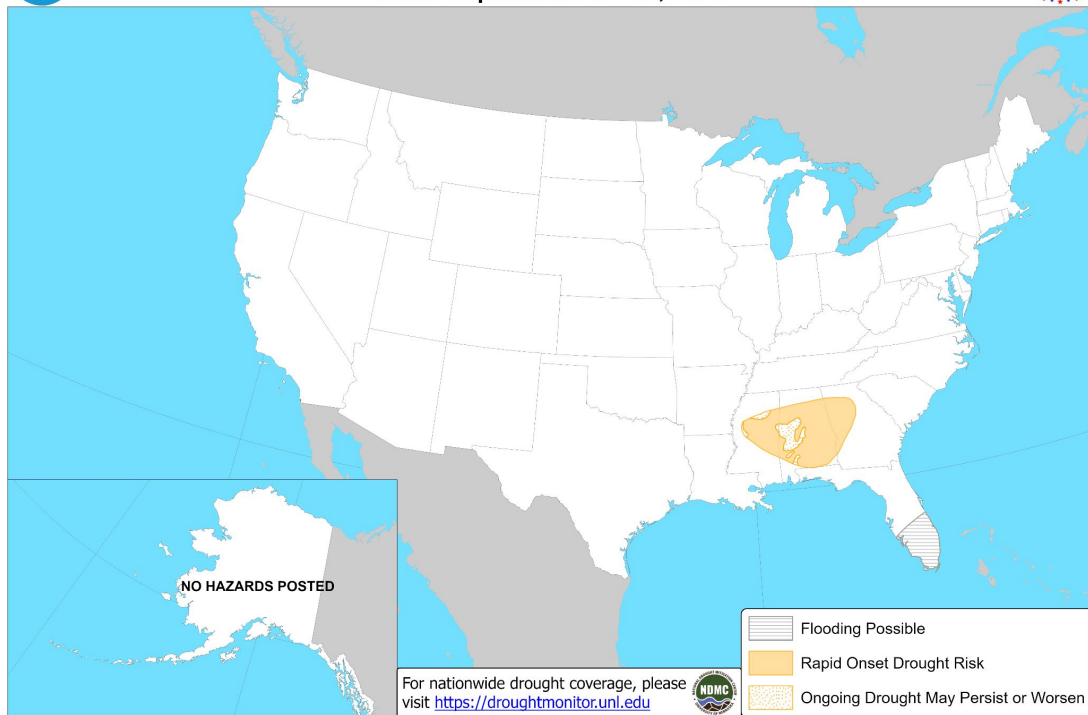
Link: [Climate Prediction Center 8 to 14-day Hazards Outlook](#)

- As of this time, no significant flooding or rapid onset drought hazards are forecast to occur across The Treasure State from, September 23rd to 29th.



## Days 8-14 U.S. Hazards Outlook

Valid: September 23 - 29, 2025



Climate Prediction Center

Released: September 15, 2025 3:00 PM EDT

Follow us:

[www.cpc.ncep.noaa.gov](http://www.cpc.ncep.noaa.gov)



National Oceanic and  
Atmospheric Administration

U.S. Department of Commerce

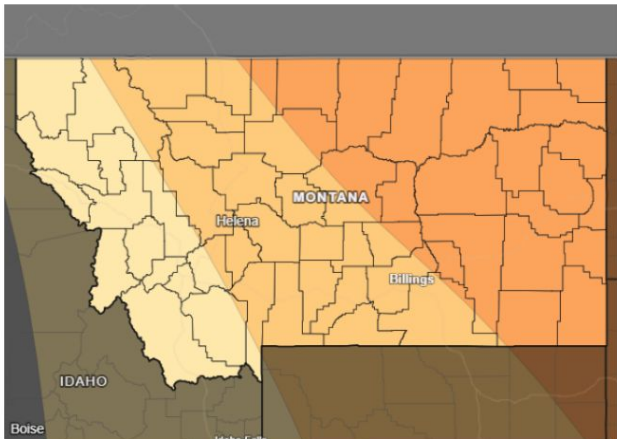
National Weather Service  
Great Falls, Montana



# 8 to 14-Day Temperature and Precipitation Outlooks

The latest monthly and seasonal outlooks can be found on the [CPC Homepage](#)

8-14 Day Temperature Outlook for September 22-28, 2025



Probability of Below-Normal Temperatures



Probability of Above-Normal Temperatures



Near-Normal Conditions

This map shows the probability (percent chance) of above-normal, near-normal, or below-normal temperature 8 to 14 days in the future.

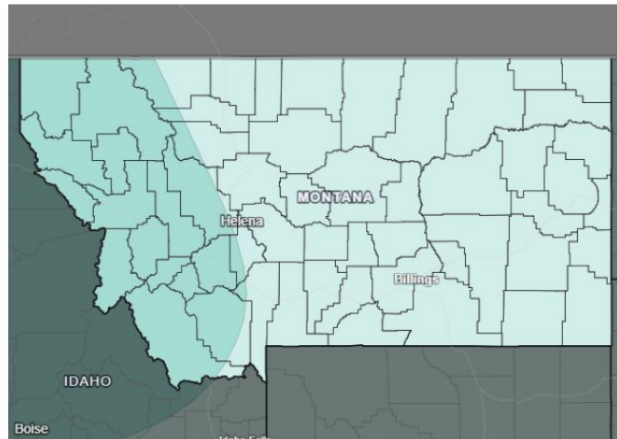
Source(s): Climate Prediction Center  
Last Updated: 09/14/25

[Drought.gov](#)

The 8 to 14-Day Temperature Outlook shows a better chance for warmer than normal temperatures across the state of MT.

The 8 to 14-Day Precipitation Outlook shows a better chance for above normal precipitation statewide.

8-14 Day Precipitation Outlook for September 22-28, 2025



Probability of Below-Normal Precipitation



Probability of Above-Normal Precipitation



Near-Normal Conditions

This map shows the probability (percent chance) of above-normal, near-normal, or below-normal precipitation 8 to 14 days in the future.

Source(s): Climate Prediction Center  
Last Updated: 09/14/25

[Drought.gov](#)



National Oceanic and  
Atmospheric Administration  
U.S. Department of Commerce

National Weather Service  
Great Falls, Montana

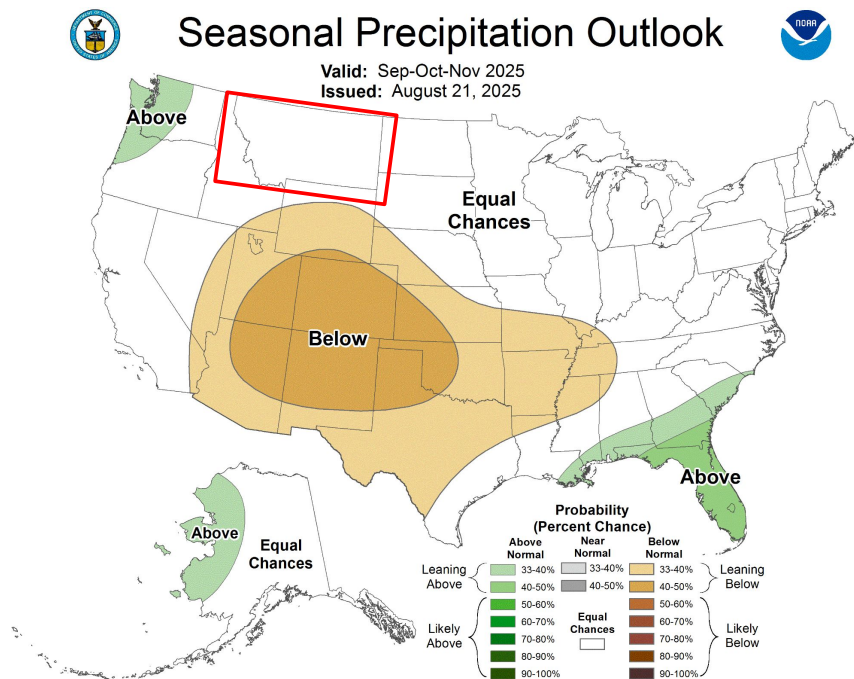
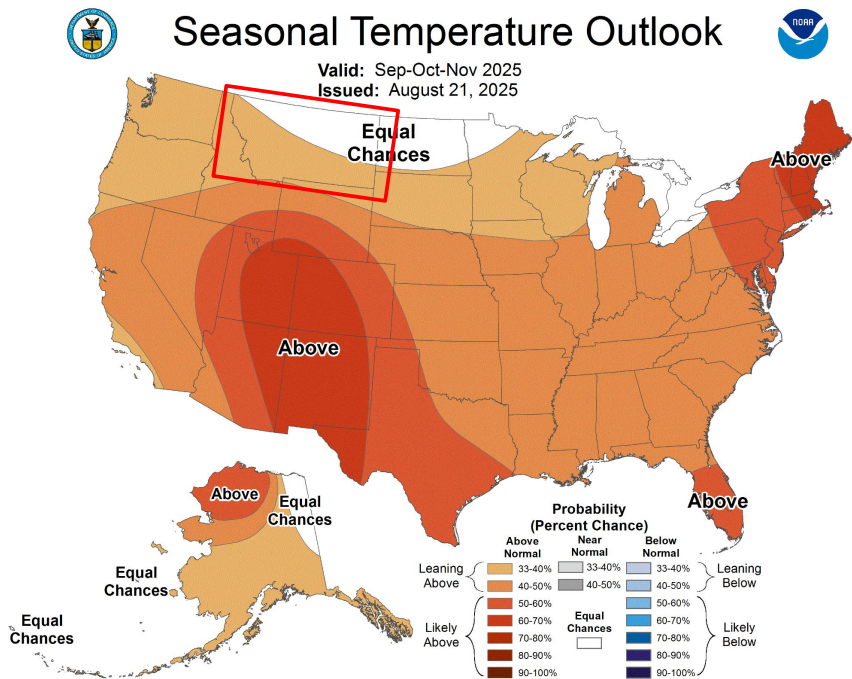


# Seasonal Temperature and Precipitation Outlooks

The latest monthly and seasonal outlooks can be found on the [CPC Homepage](#)

The Seasonal Temperature Outlook shows a better chance for warmer than normal temperatures south of an area that stretches from northwestern to southeastern MT, while the outlook for the remainder of the state is for equal chances for above or below normal temperatures.

The Seasonal Precipitation Outlook shows equal chances for above or below normal precipitation.



National Oceanic and  
Atmospheric Administration

U.S. Department of Commerce

National Weather Service  
Great Falls, Montana



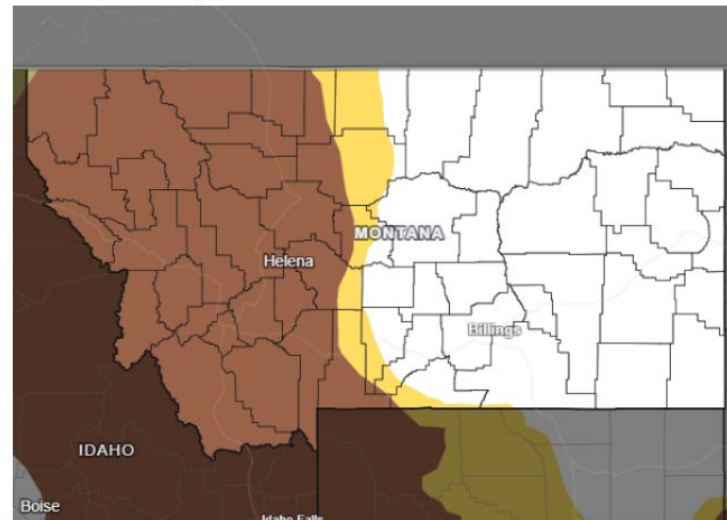
# Seasonal Drought Outlook

The latest monthly and seasonal outlooks can be found on the [CPC homepage](https://www.cpc.ncep.noaa.gov/)

- **Persisting:** For the seasonal period of, August 31st through the end of November, persistent drought conditions are predicted across an area that covers, nearly, the western half of The Treasure State.
- **Developing:** A portion of central MT
- **Improving:** None
- **Ending:** None
- **No Drought:** Generally, the eastern half of the state

<https://www.drought.gov/states/montana>

## Seasonal (3-Month) Drought Outlook for August 31–November 30, 2025



### Drought Is Predicted To...



The Seasonal Drought Outlook predicts whether drought will develop, remain, improve, or be removed in the next 3 months or so.

Source(s): Climate Prediction Center

Last Updated: 08/31/25

**Drought.gov**



National Oceanic and  
Atmospheric Administration  
U.S. Department of Commerce

National Weather Service  
Great Falls, Montana





# Summary of Impacts

Links: Submit [Condition Monitoring Observer Reports \(CMOR\)](#) and View the [Drought Impacts Reporter](#)

## Hydrologic Impacts

- According to the National Centers for Environmental Information (NCEI) Montana Climate Division 1, western Montana has experienced the 5th driest 36-month period (Sep 2022 - Aug 2025) since 1946. Montana Climate Division 1 received 79.41 inches of precipitation during this 36-month period, 14.79 inches less than the, 1901 -2000 mean of, 94.2 inches, for a 36-month period beginning in September and ending 36-months later in August.

## Agricultural Impacts

- In spite of the summer moisture received by some areas, the very dry May and June “severely” damaged hay crops, causing production well below normal.
- Some areas report that grasshoppers were “horrible,” again this year.

## Fire Hazard Impacts

- Although the state of MT is included in an area of normal Significant Wildland Fire Potential, fire safety practices continue very important.

## Other Impacts & Messaging

- It was just a year ago, this month, that flash flooding occurred at, The Horse Gulch Burn Scar.
- Thunderstorm activity continues.
- During flash flooding, “Climb to Safety.”

## Mitigation Actions

- High focus is applied to flood and fire concerns.
- Burn scar areas are monitored, closely.

