



Drought Information Statement for Southeast Arizona

Valid August 27, 2025

Issued By: National Weather Service Tucson, AZ

Contact Information: w-twc.webmaster@noaa.gov

- This product will be updated by September 22, 2025 or sooner if drought conditions worsen significantly.
 - Please see all currently available products at <https://drought.gov/drought-information-statements>.
 - Please visit <https://www.weather.gov/twc/DroughtInformationStatement> for previous statements.
 - Please visit <https://www.drought.gov/drought-status-updates/> for regional drought status updates.
-
- Exceptional (D4) drought conditions is across most of Greenlee county and the far eastern portions of Cochise county.
 - The remainder of southeast Arizona is under Severe (D2) to Extreme (D3) drought conditions



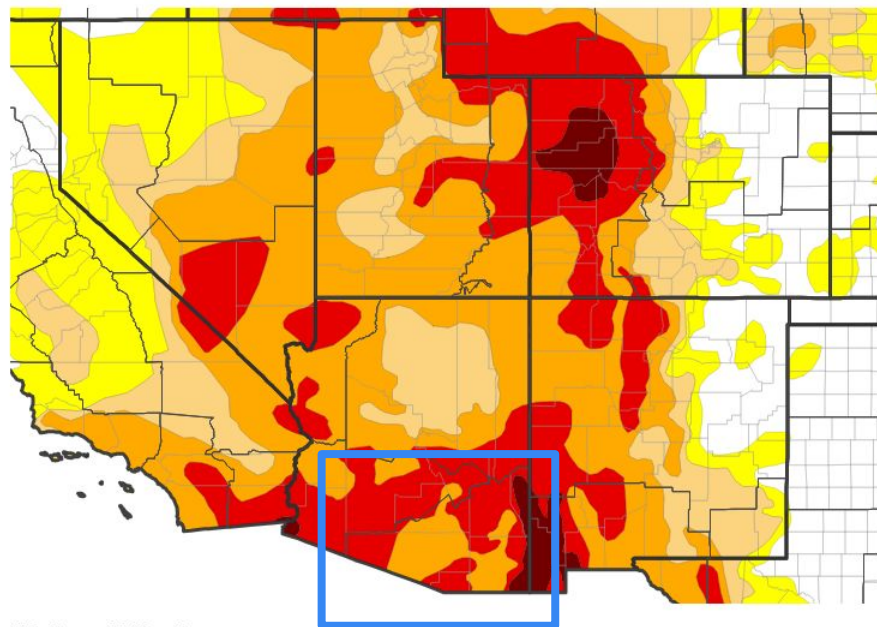


U.S. Drought Monitor

Link to the [latest U.S. Drought Monitor](#) for southeast Arizona

- Drought intensity and Extent
 - **D4 (Exceptional Drought)**: Most of Greenlee county and eastern Cochise county (east of a San Simon to Douglas line).
 - **D3 (Extreme Drought)**: The remainder of Greenlee county; majority of Graham and Santa Cruz counties; portions of Cochise, Pinal and Pima counties.
 - **D2 (Severe Drought)**: The remainder of Pima, Pinal, Graham, Cochise & Santa Cruz counties.
 - **D1 (Moderate Drought)**: No areas.
 - **D0: (Abnormally Dry)**: No areas.

U.S. Drought Monitor



U.S. Drought Monitor



Source(s): NDMC, NOAA, USDA; image courtesy of Drought.gov

Data Valid: 08/19/25



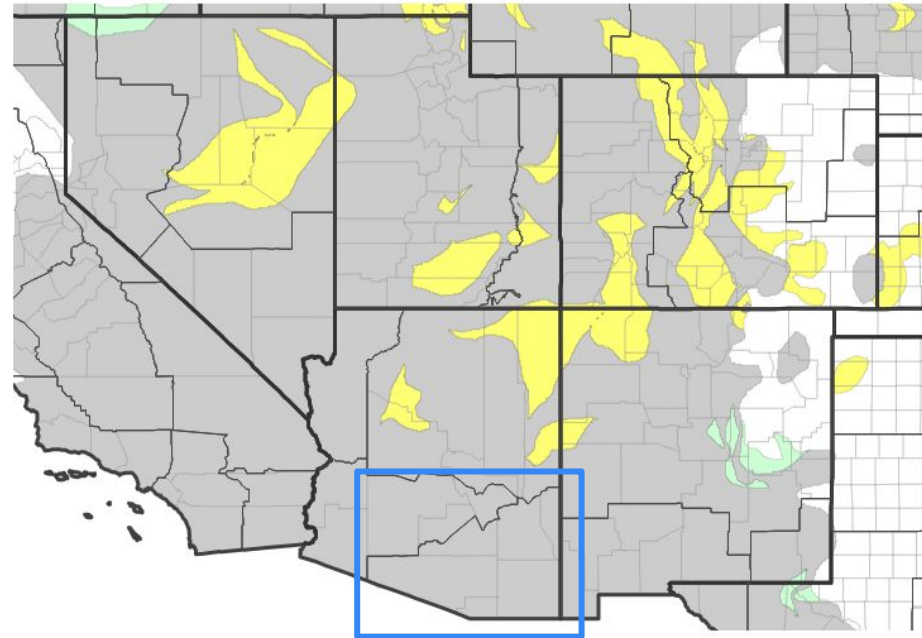


Recent Change in Drought Intensity

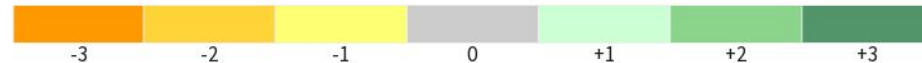
Link to the latest [4-week change map](#) for southeast Arizona

- One Week Drought Monitor Class Change.
 - Drought Worsened:** No deterioration was observed.
 - No Change:** All of southeast Arizona
 - Drought Improved:** No improvements.

U.S. Drought Monitor 1-Week Change Map



Drought Change Since Last Week



Source(s): NDMC, NOAA, USDA; image courtesy of Drought.gov

Data Valid: 08/19/25

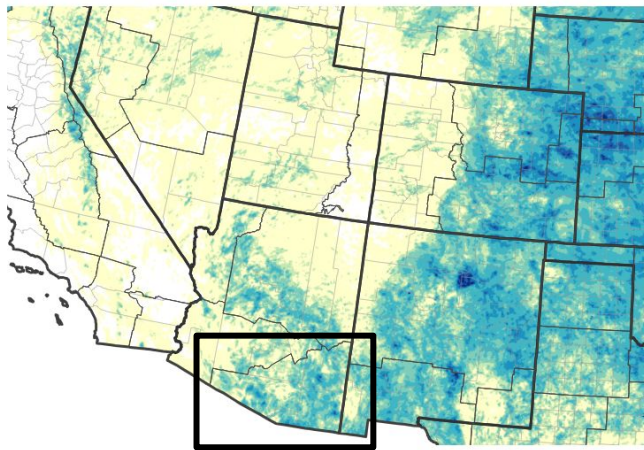




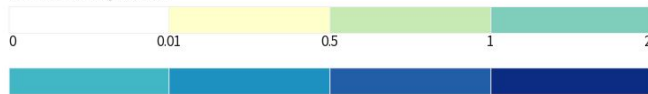
Precipitation

- Monsoon rainfall has been sporadic across southeast Arizona during the past month.

30-Day Precipitation Accumulations (Inches)



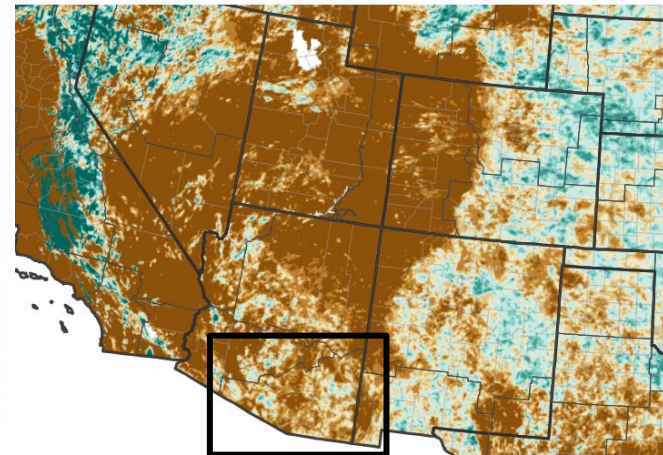
Inches of Precipitation



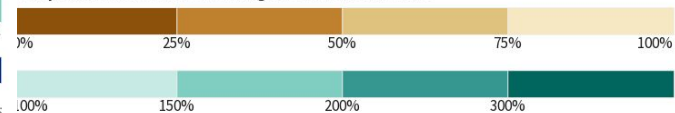
Source(s): National Weather Service Multi-Radar Multi-Sensor System;

Last Updated: 08/26/25

30-Day Percent of Normal Precipitation



Precipitation Shown as a Percentage of Normal Conditions



Source(s): National Weather Service Multi-Radar Multi-Sensor System;
image courtesy of Drought.gov

Last Updated: 08/26/25

Data over the past 30 days ending August 26, 2025

National Weather Service
Tucson, AZ



National Oceanic and
Atmospheric Administration
U.S. Department of Commerce



Temperature

- The past 30 days has been warmer than normal across southeast Arizona with the largest departures from normal occurring across Pima county.

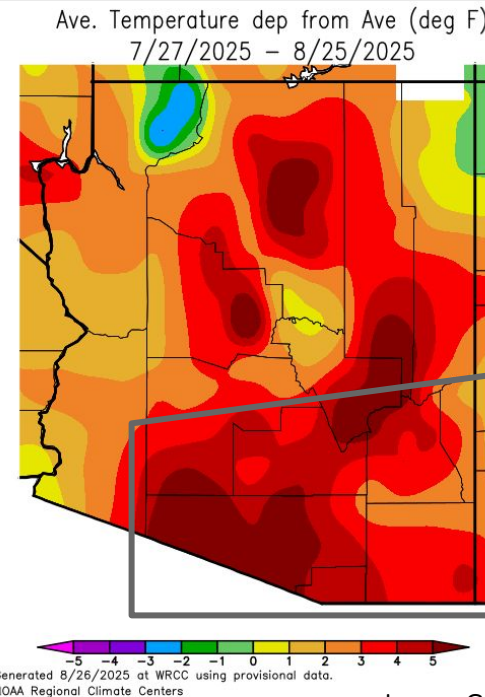
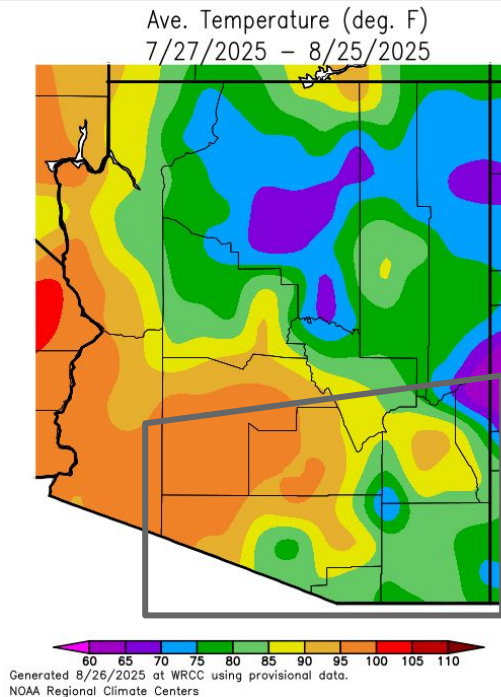


Image Captions:

Left - [Average Temperature for Arizona w/southeast Arizona in highlighted gray box](#)
Right - [Departure from Normal Temperature for Arizona w/southeast Arizona in highlighted gray box](#)

Data Courtesy Western Regional Climate Center.
Data over the past 30 days ending August 25, 2025





Summary of Impacts

Links: See/submit [Condition Monitoring Observer Reports \(CMOR\)](#) and view the [Drought Impacts Reporter](#)

Hydrologic Impacts

- Some river basins in Southeastern Arizona continue to have below to much below normal streamflow conditions. ([USGS Streamflow](#))

Agricultural Impacts

- Soil moisture values have improved in some areas but still remain well below normal across most of southeast Arizona. ([Soil Moisture Observations](#))

Fire Hazard Impacts

- Normal fire potential is expected over the next month.

Other Impacts

- There are no known impacts at this time.

Mitigation Actions

- Please refer to your municipality and/or water provider for mitigation information.

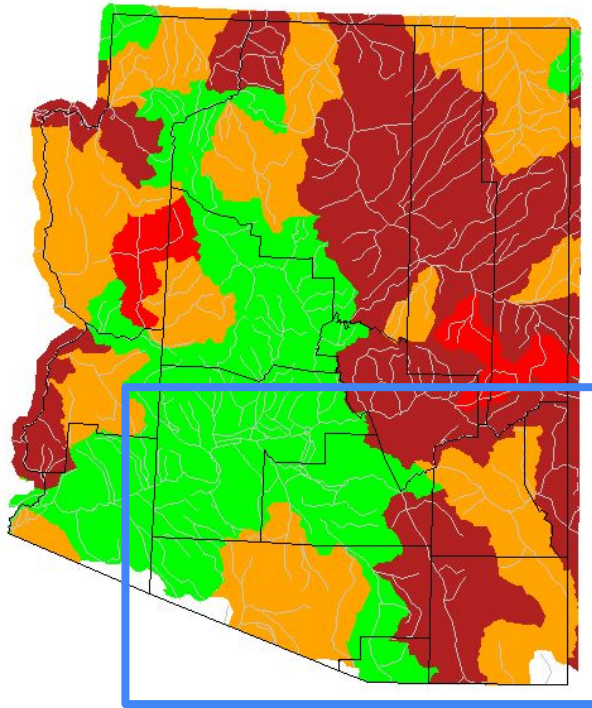




Hydrologic Conditions and Impacts

Monday, August 25, 2025

- Conditions in the Upper San Pedro River and Upper Gila River continue to be at below to much below normal streamflow. The Santa Cruz River conditions remain near normal.



Explanation - Percentile classes							
Low	<10	10-24	25-75	76-90	>90	High	No Data
	Much below normal	Below normal	Normal	Above normal	Much above normal		

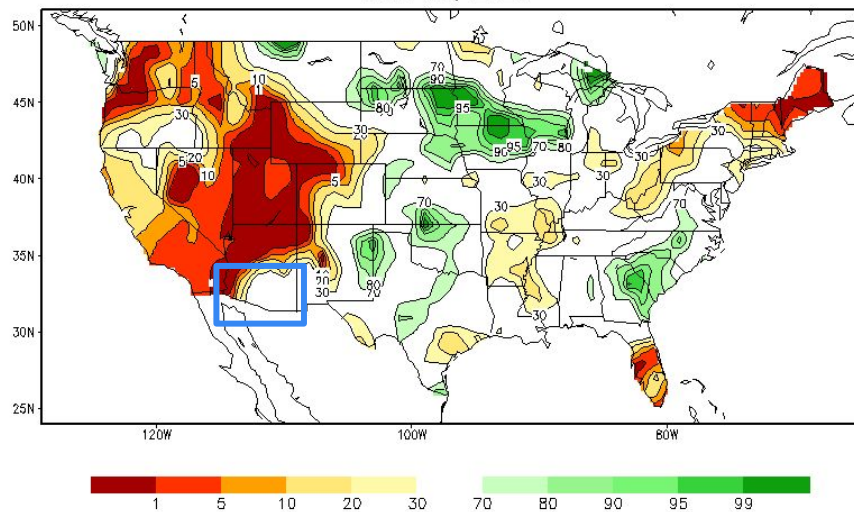
Image Caption: USGS 7 day average streamflow HUC map valid August 25, 2025



Agricultural Impacts

- Soil moisture values have improved across portions of southeast Arizona.

Calculated Soil Moisture Ranking Percentile
AUG 25, 2025



value for the August 17 - 23, 2025
Short Term Need vs. Available Water in a Shallow Soil Profile

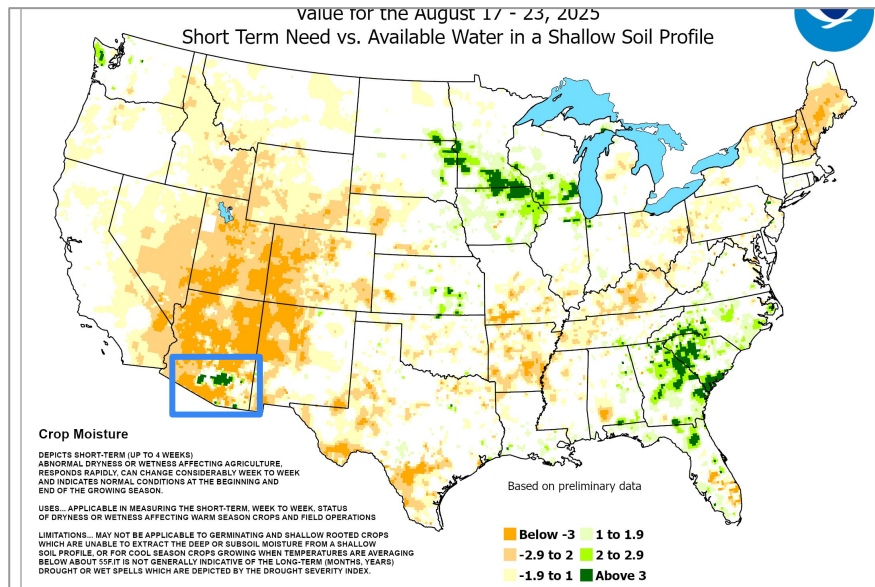


Image Captions:

Left: CPC Calculated [Soil Moisture Ranking Percentile](#) valid August 22, 2025
Right: [Crop Moisture Index](#). Weekly value for period ending August 23, 2025





Fire Hazard Impacts

Link to [Wildfire Potential Outlooks from the National Interagency Coordination Center](#).

- Normal fire potential is expected in September & October.

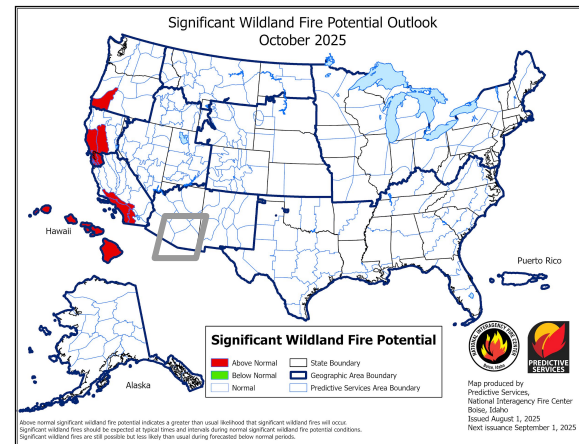
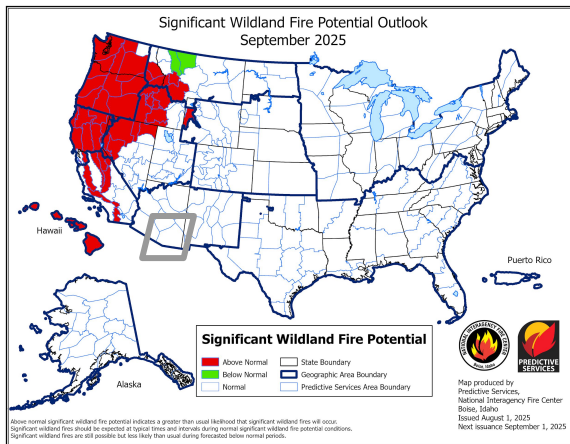


Image Captions:

The two images are for Significant Wildland Fire Monthly for the following months: Left: [September](#); Right: [October](#)

[National Wildland Significant Fire Potential Outlook text](#) issued August 1, 2025



National Oceanic and
Atmospheric Administration
U.S. Department of Commerce

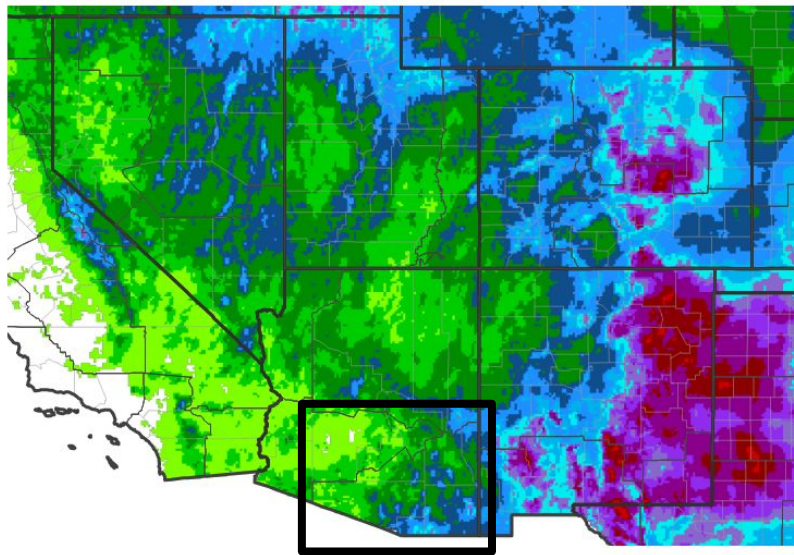
National Weather Service
Tucson, AZ



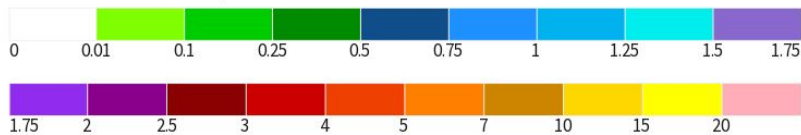
Seven Day Precipitation Forecast

- Daily chances for showers and thunderstorms across southeast Arizona over the next 7 days. There will be localized heavy rain from stronger thunderstorms.

7-Day Quantitative Precipitation Forecast for August 26, 2025–September 2, 2025



Predicted Inches of Precipitation



Source(s): National Weather Service Weather Prediction Center; image courtesy of Drought.gov

Last Updated: 08/26/25

Image Caption: Weather Prediction Center [7-day precipitation forecast](#) valid Tuesday August 26, 2025 to Tuesday September 2, 2025



**National Oceanic and
Atmospheric Administration**

U.S. Department of Commerce

**National Weather Service
Tucson, AZ**

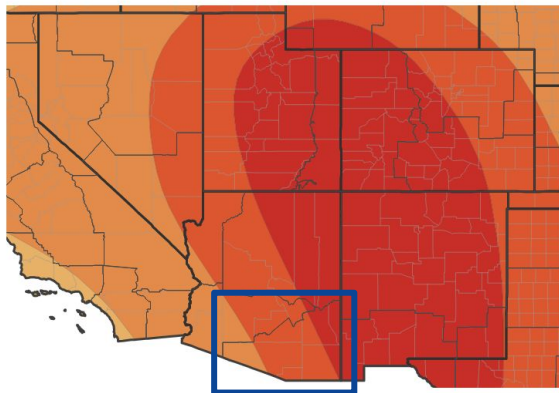


Long-Range Outlooks

The latest monthly and seasonal outlooks can be found on the [CPC homepage](#)

- The temperature outlook for **September 1 to November 30** leans toward **above normal**, 40% to 70% chance across the area.
- The precipitation outlook from **September 1 to November 30** leans toward **below normal**, 33% to 50% chance across the area.

Seasonal (3-Month) Temperature Outlook for September 1, 2025–November 30, 2025



Probability of Below-Normal Temperatures



Probability of Above-Normal Temperatures



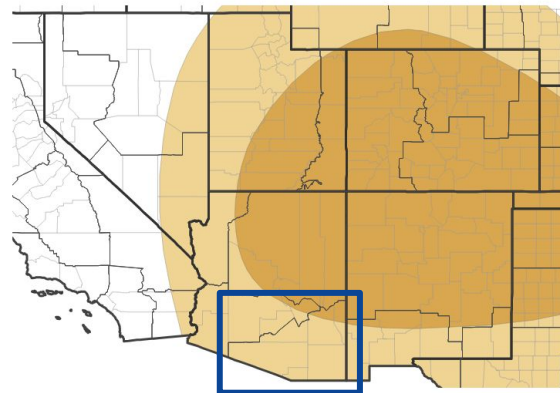
Probability of Near-Normal Temperatures



Source(s): Climate Prediction Center; image courtesy of Drought.gov

Last Updated: 08/21/25

Seasonal (3-Month) Precipitation Outlook for September 1, 2025–November 30, 2025



Probability of Below-Normal Precipitation



Probability of Above-Normal Precipitation



Probability of Near-Normal Precipitation



Source(s): Climate Prediction Center; image courtesy of Drought.gov

Last Updated: 08/21/25

Image Captions:

Left - [Climate Prediction Center Seasonal Temperature Outlook.](#)

Right - [Climate Prediction Center Seasonal Precipitation Outlook.](#)

Valid September 1, 2025 to November 30, 2025



National Oceanic and
Atmospheric Administration
U.S. Department of Commerce

National Weather Service
Tucson, AZ

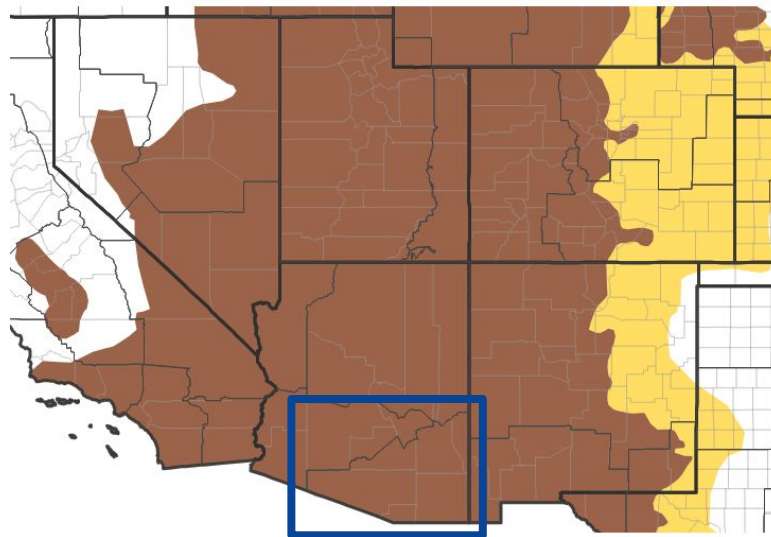


Drought Outlook

The latest monthly and seasonal outlooks can be found on the [CPC homepage](#)

- Drought conditions will persist through the Fall season.

Seasonal (3-Month) Drought Outlook for August 21, 2025–November 30, 2025



Drought Is Predicted To...



Source(s): Climate Prediction Center; image courtesy of Drought.gov

Last Updated: 08/21/25

Image Caption:

Climate Prediction Center Seasonal Drought Outlook Released
August 21, 2025 valid for August 21, 2025 to November 30, 2025

Links to the latest:

[Climate Prediction Center Monthly Drought Outlook](#)

[Climate Prediction Center Seasonal Drought Outlook](#)



**National Oceanic and
Atmospheric Administration**

U.S. Department of Commerce

**National Weather Service
Tucson, AZ**