



Drought Information Statement for Southeast Arizona

Valid December 22, 2025

Issued By: National Weather Service Tucson, AZ

Contact Information: w-twc.webmaster@noaa.gov

- This product will be updated by January 22, 2026 or sooner if drought conditions worsen significantly.
 - Please see all currently available products at <https://drought.gov/drought-information-statements>.
 - Please visit <https://www.weather.gov/twc/DroughtInformationStatement> for previous statements.
 - Please visit <https://www.drought.gov/drought-status-updates/> for regional drought status updates.
-
- The only area of Extreme (D3) drought conditions is across central Greenlee county.
 - Severe (D2) to Moderate (D1) drought conditions continue across the remainder of southeast Arizona.



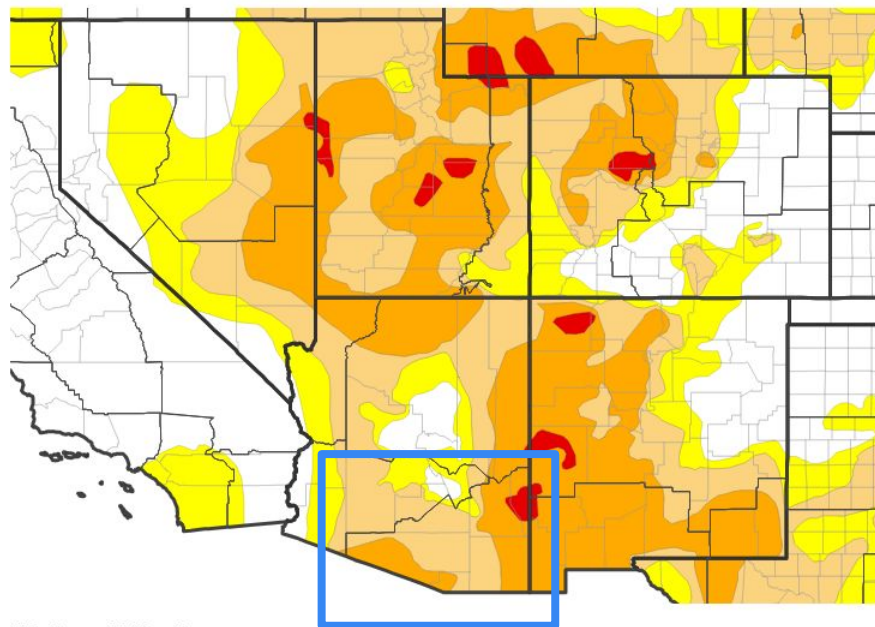


U.S. Drought Monitor

Link to the [latest U.S. Drought Monitor](#) for southeast Arizona

- Drought intensity and Extent
 - **D4 (Exceptional Drought)**: No areas.
 - **D3 (Extreme Drought)**: Central Greenlee county.
 - **D2 (Severe Drought)**: The remainder of Greenlee county; much of Graham county; eastern half of Cochise county; western half of Santa Cruz county and southern portions of Pima county.
 - **D1 (Moderate Drought)**: The remainder of Pinal, Pima, Santa Cruz, Cochise & Santa Cruz counties.
 - **D0: (Abnormally Dry)**: A small area of far northeast Pinal county and northwest Graham county.

U.S. Drought Monitor



U.S. Drought Monitor



Source(s): NDMC, NOAA, USDA; image courtesy of Drought.gov

Data Valid: 12/16/25



National Oceanic and
Atmospheric Administration
U.S. Department of Commerce

National Weather Service
Tucson, AZ

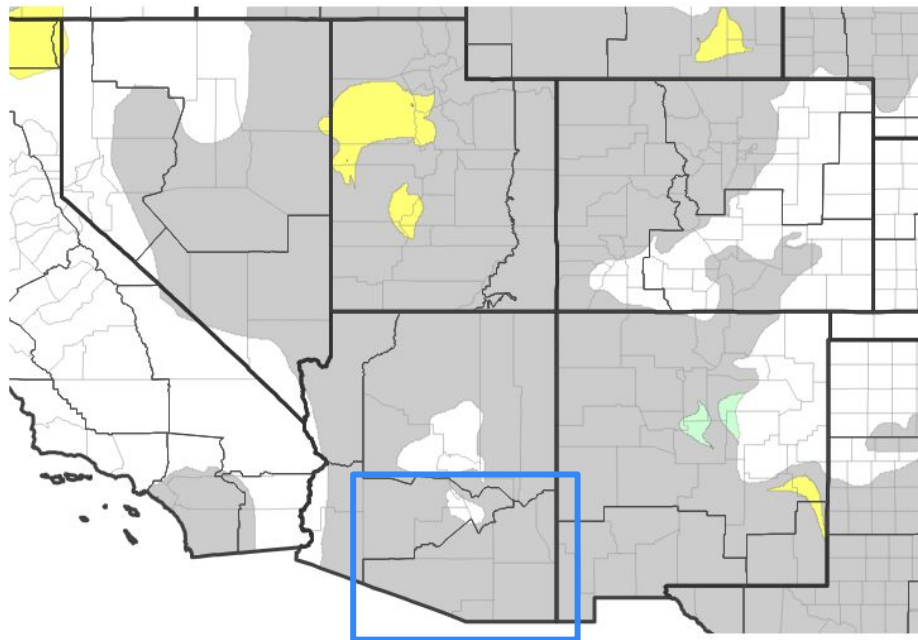


Recent Change in Drought Intensity

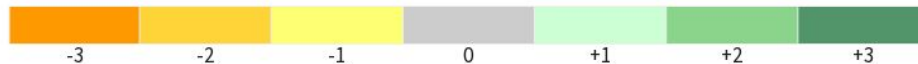
Link to the latest [4-week change map](#) for southeast Arizona

- One Week Drought Monitor Class Change.
 - Drought Worsened:** No deterioration was observed.
 - No Change:** All of southeast Arizona
 - Drought Improved:** No improvement was observed.

U.S. Drought Monitor 1-Week Change Map



Drought Change Since Last Week



Source(s): NDMC, NOAA, USDA; image courtesy of Drought.gov

Data Valid: 12/16/25

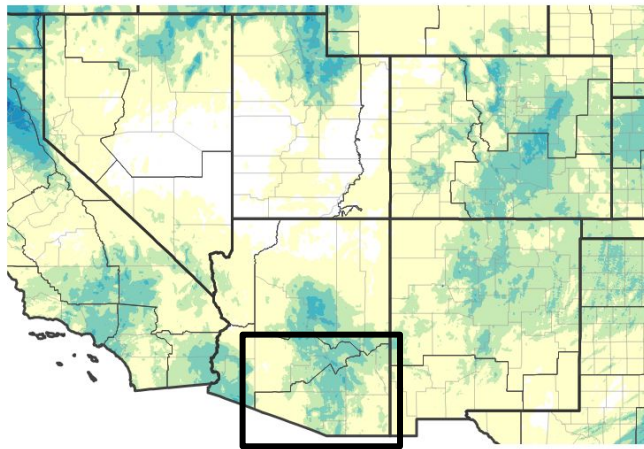




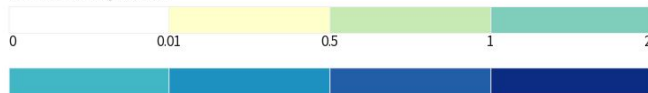
Precipitation

- Most of the area has recorded below normal precipitation during the past 30 days.

30-Day Precipitation Accumulations (Inches)



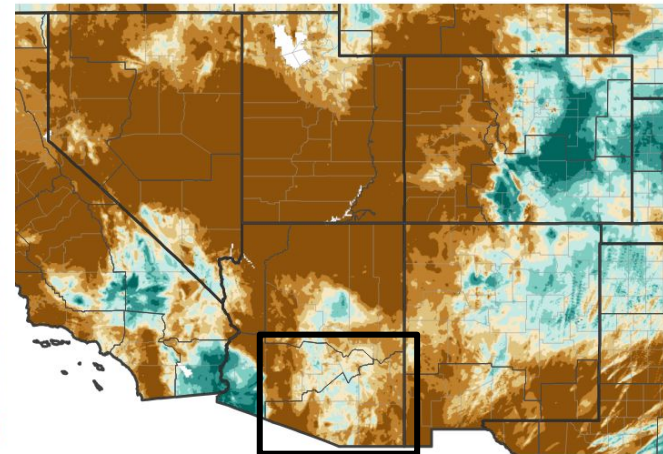
Inches of Precipitation



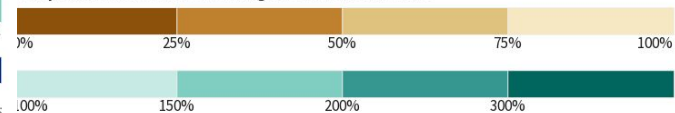
Source(s): National Weather Service Multi-Radar Multi-Sensor System;

Last Updated: 12/22/25

30-Day Percent of Normal Precipitation



Precipitation Shown as a Percentage of Normal Conditions



Source(s): National Weather Service Multi-Radar Multi-Sensor System;
image courtesy of Drought.gov

Last Updated: 12/22/25

Data over the past 30 days ending December 22, 2025

National Weather Service
Tucson, AZ



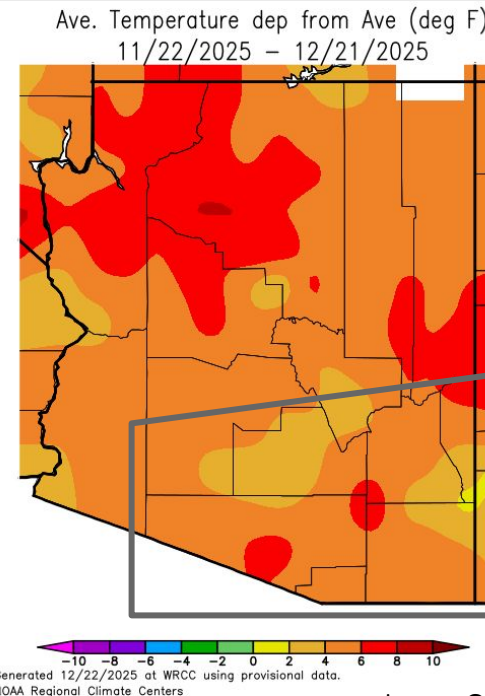
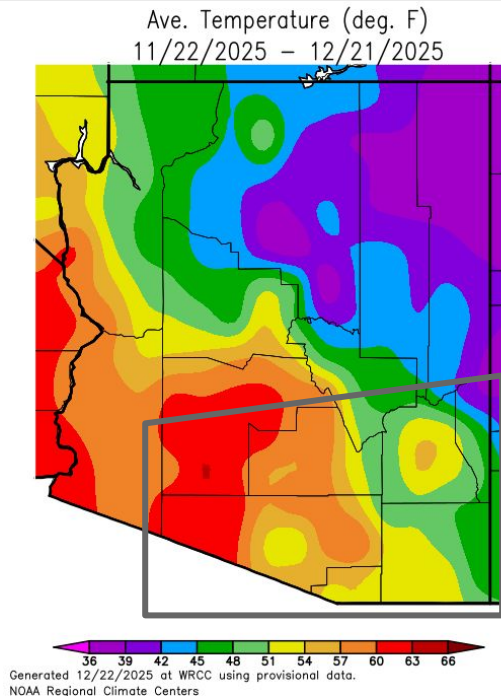
National Oceanic and
Atmospheric Administration

U.S. Department of Commerce



Temperature

- The past 30 days has been warmer than normal across southeast Arizona.



Left - [Average Temperature for Arizona w/southeast Arizona in highlighted gray box](#)
Right - [Departure from Normal Temperature for Arizona w/southeast Arizona in highlighted gray box](#)

Data Courtesy Western Regional Climate Center.
Data over the past 30 days ending December 21, 2025

Image Captions:

National Weather Service
Tucson, AZ



National Oceanic and
Atmospheric Administration
U.S. Department of Commerce



Summary of Impacts

Links: See/submit [Condition Monitoring Observer Reports \(CMOR\)](#) and view the [Drought Impacts Reporter](#)

Hydrologic Impacts

- Stream flows were normal across most of the Santa Cruz river basin and parts of the Gila River river basin. ([USGS Streamflow](#))

Agricultural Impacts

- Soil moisture values were above normal west of Tucson. ([Soil Moisture Observations](#))

Fire Hazard Impacts

- Normal fire potential is expected over the next month.

Other Impacts

- There are no known impacts at this time.

Mitigation Actions

- Please refer to your municipality and/or water provider for mitigation information.

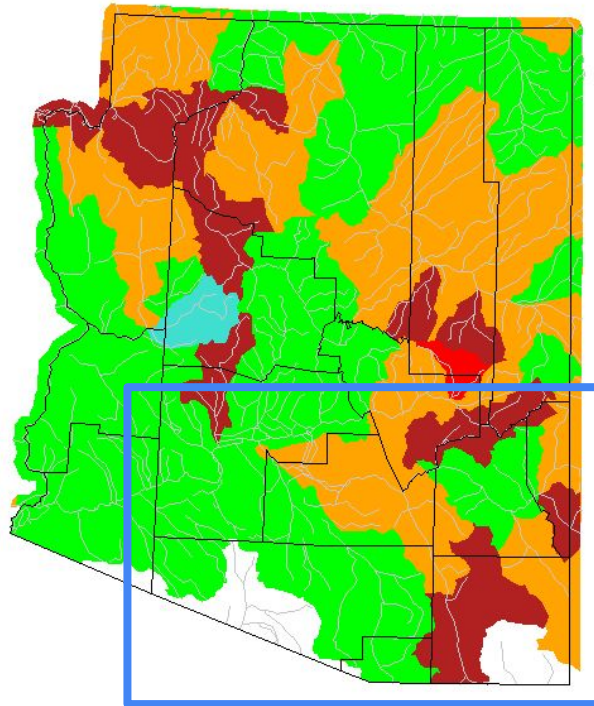




Hydrologic Conditions and Impacts

Sunday, December 21, 2025

- Stream flows were normal across most of the Santa Cruz river basin, parts of the Gila River river basin and across central Pima county.
- Below normal stream flows for the remaining basins of southeast Arizona.



Explanation - Percentile classes							
Low	<10	10-24	25-75	76-90	>90	High	No Data
	Much below normal	Below normal	Normal	Above normal	Much above normal		

Image Caption: USGS 7 day average streamflow HUC map valid December 21, 2025





Agricultural Impacts

- Above normal soil moisture values exist west of Tucson while near normal soil moisture values exist from Tucson east.

Calculated Soil Moisture Ranking Percentile
DEC 21, 2025

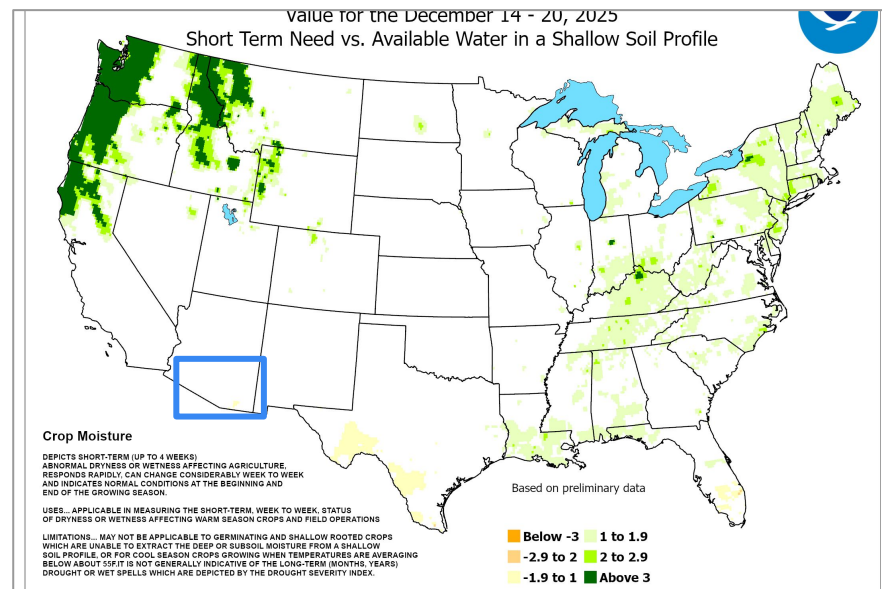
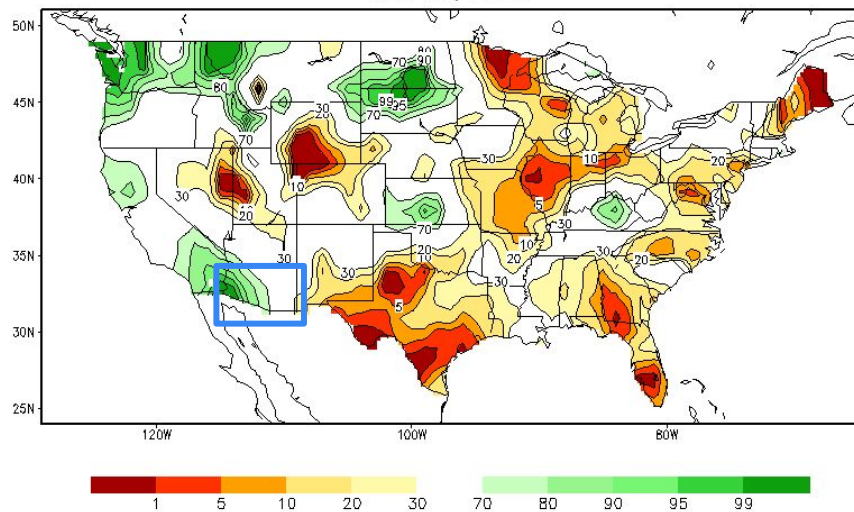


Image Captions:

Left: CPC Calculated [Soil Moisture Ranking Percentile](#) valid December 21, 2025
Right: [Crop Moisture Index](#). Weekly value for period ending December 14, 2025





Fire Hazard Impacts

Link to [Wildfire Potential Outlooks from the National Interagency Coordination Center](#).

- Normal fire potential is expected in January & February.

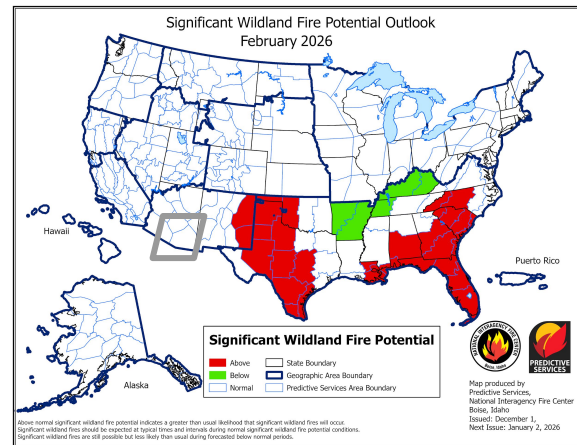
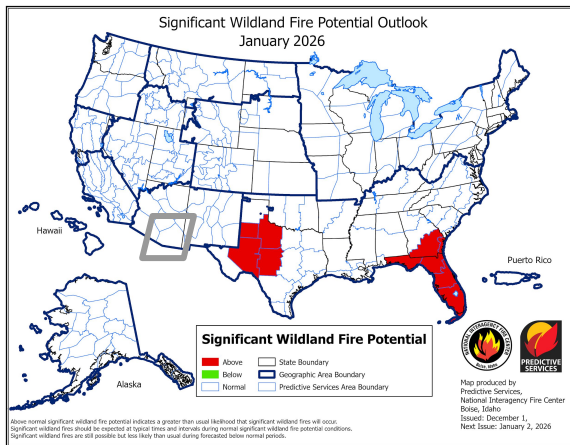


Image Captions:

The two images are for Significant Wildland Fire Monthly for the following months: Left: [January](#); Right: [February](#)

[National Wildland Significant Fire Potential Outlook text](#) issued December 1, 2025



National Oceanic and
Atmospheric Administration
U.S. Department of Commerce

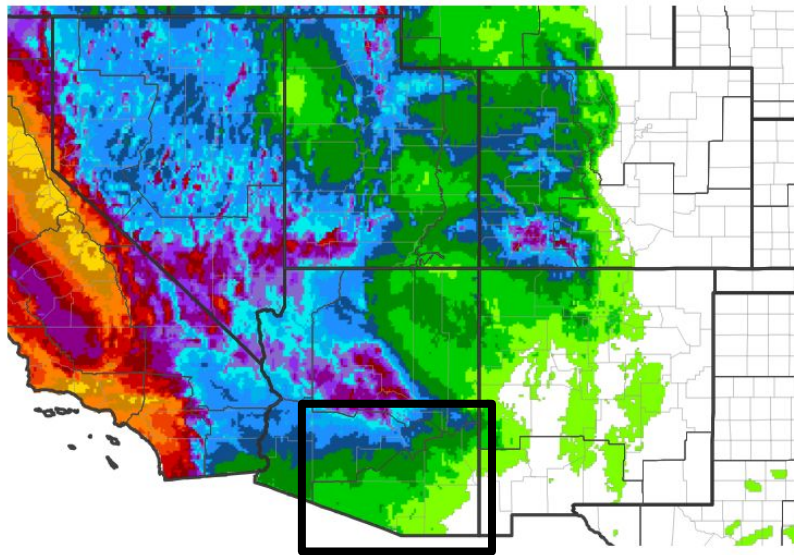
National Weather Service
Tucson, AZ



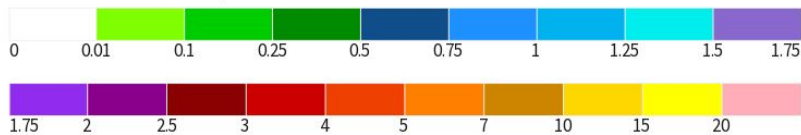
Seven Day Precipitation Forecast

- A weather system will bring a chance for valley rain showers (10%-50%) and mountain snow showers (50%-80%) on Christmas Eve and Day and then a low end chance of valley rain/mountain snow showers on December 28th and 29th.

7-Day Quantitative Precipitation Forecast for December 22, 2025–December 29, 2025



Predicted Inches of Precipitation



Source(s): National Weather Service Weather Prediction Center; image courtesy of Drought.gov

Last Updated: 12/22/25

Image Caption: Weather Prediction Center [7-day precipitation forecast](#) valid Monday December 22, 2025 to Monday December 29, 2025



National Oceanic and
Atmospheric Administration

U.S. Department of Commerce

National Weather Service
Tucson, AZ

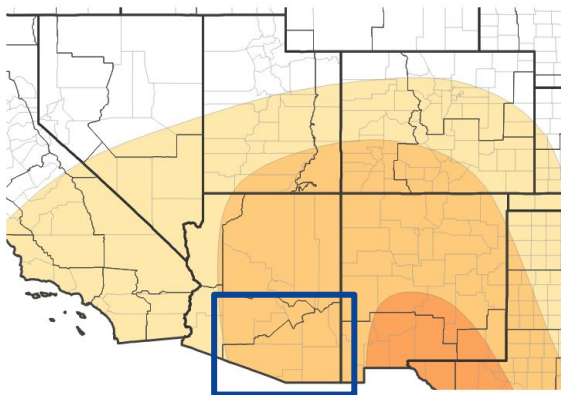


Long-Range Outlooks

The latest monthly and seasonal outlooks can be found on the [CPC homepage](#)

- The temperature outlook for **January 1, 2026 to March 31, 2026** leans toward **above normal**, 40% to 50% chance across the area.
- The precipitation outlook from **January 1, 2026 to March 31, 2026** leans toward **below normal**, 40% to 50% chance across the area.
- La Niña conditions are present and favored to persist for the next month or two.

Seasonal (3-Month) Temperature Outlook for January 1, 2026–March 31, 2026



Probability of Below-Normal Temperatures



Probability of Above-Normal Temperatures



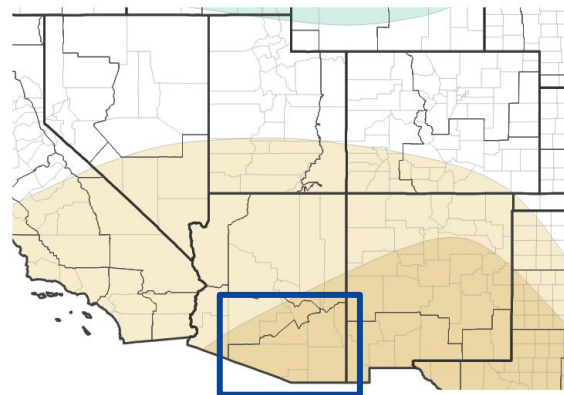
Probability of Near-Normal Temperatures



Source(s): Climate Prediction Center; image courtesy of Drought.gov

Last Updated: 12/18/25

Seasonal (3-Month) Precipitation Outlook for January 1, 2026–March 31, 2026



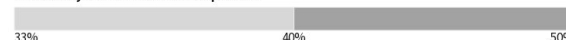
Probability of Below-Normal Precipitation



Probability of Above-Normal Precipitation



Probability of Near-Normal Precipitation



Source(s): Climate Prediction Center; image courtesy of Drought.gov

Last Updated: 12/18/25

Image Captions:

Left - [Climate Prediction Center Seasonal Temperature Outlook.](#)

Right - [Climate Prediction Center Seasonal Precipitation Outlook.](#)

Valid January 1, 2026 to March 31, 2026



National Oceanic and
Atmospheric Administration
U.S. Department of Commerce

National Weather Service
Tucson, AZ

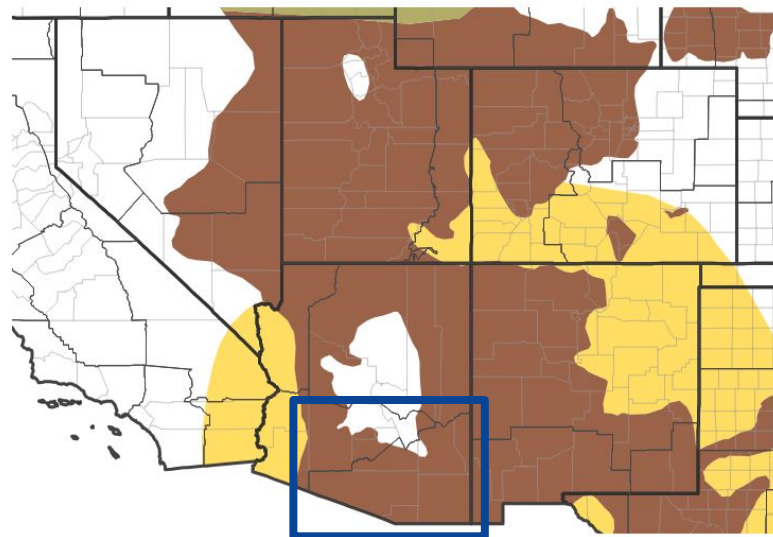


Drought Outlook

The latest monthly and seasonal outlooks can be found on the [CPC homepage](#)

- Drought conditions will persist through the end of March.

Seasonal (3-Month) Drought Outlook for December 18, 2025–March 31, 2026



Drought Is Predicted To...



Source(s): Climate Prediction Center; image courtesy of Drought.gov

Last Updated: 12/18/25

Image Caption:

Climate Prediction Center Seasonal Drought Outlook Released
December 18, 2025 valid for December 18, 2025 to March 31, 2026

Links to the latest:

[Climate Prediction Center Monthly Drought Outlook](#)

[Climate Prediction Center Seasonal Drought Outlook](#)



**National Oceanic and
Atmospheric Administration**

U.S. Department of Commerce

National Weather Service
Tucson, AZ