

# Setting up 5-minute weather data

## Who can send this data?

If you are currently running an automated weather station and uploading the data to the Internet, and run the WeatherLinkIP or WeatherLink software, then we would love to see your data every 5-minutes to 15-minutes (weatherlinkIP has 15 minute push to MADIS but regular WeatherLink is 5 minute data).

**Note: for 5-minute transmission you will need reliable WiFi and an operating PC.**

This is uploaded to a national server as Citizens Weather Observer Program (CWOP) and

APRS. <http://wxqa.com/>

<http://findu.com/>

<http://aprs.fi/#!lat=33.15810&lng=-117.35060>

1. There is no extra cost for increasing upload frequency. You will need **CWOP ID** and then configure your WeatherLink system software GUI. Visit <http://wxqa.com/>
2. Please see below for WeatherLink (version 5.9+) configuration that I run for Carlsbad. This goes to MADIS (national server), Mesowest (feeds come from MADIS) and the following pages:

[http://www.wrh.noaa.gov/map/?obs=true&wfo=sgx&basemap=OpenStreetMap&boundaries=true,false&obs\\_popup=true](http://www.wrh.noaa.gov/map/?obs=true&wfo=sgx&basemap=OpenStreetMap&boundaries=true,false&obs_popup=true) (NWS display page for MADIS or visit [weather.gov/SanDiego](http://weather.gov/SanDiego) observation page)

<http://mesowest.utah.edu/index.html> (Mesowest MADIS page)

[http://mesowest.utah.edu/cgi-bin/droman/raws\\_ca\\_monitor.cgi?](http://mesowest.utah.edu/cgi-bin/droman/raws_ca_monitor.cgi?) (Mesowest ROMAN page and archive)

## Advantages:

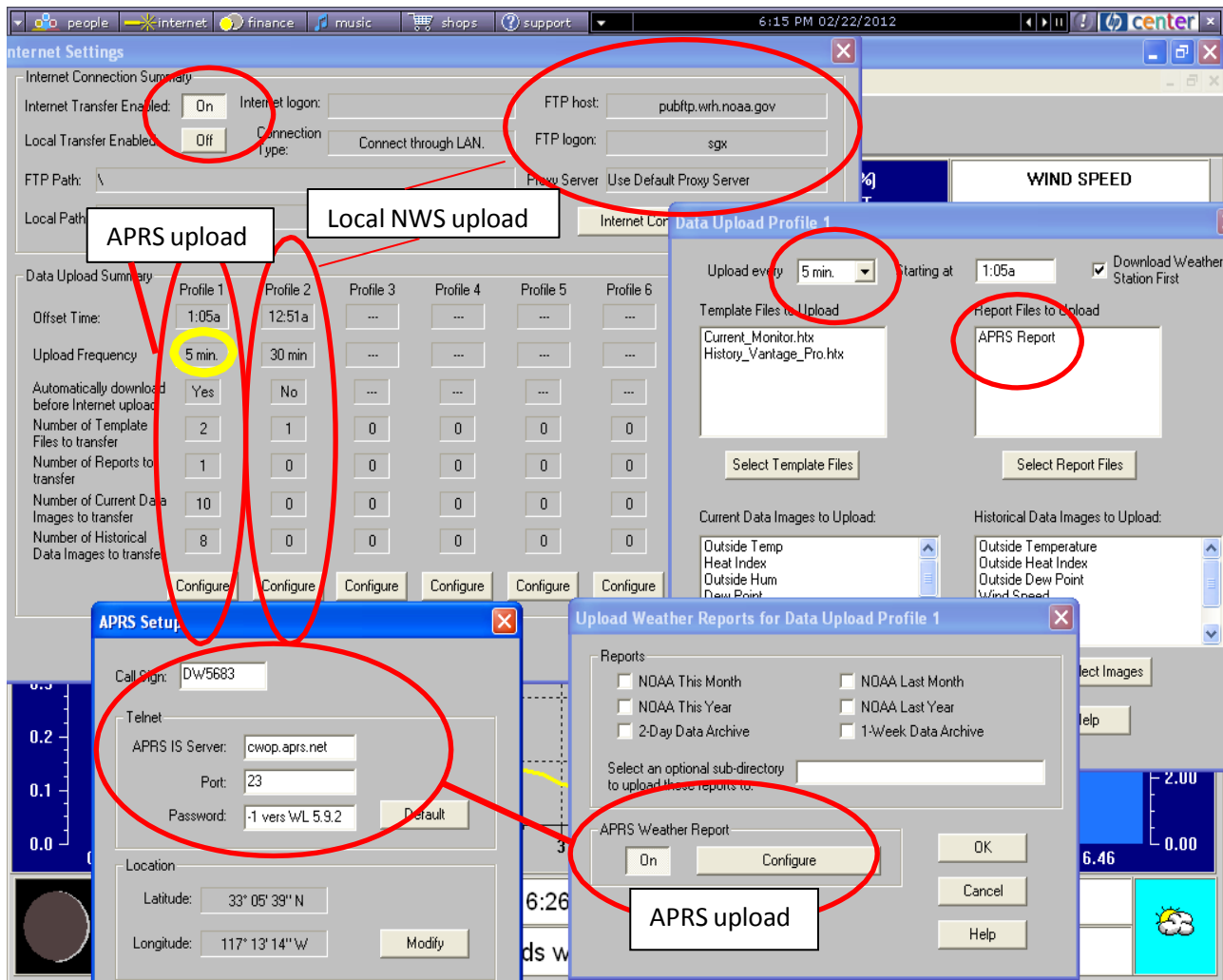
The only way we can see true weather fluctuations and microscale events (thunderstorms, sea breeze, rotors, breaking waves, fronts, dust devils, diurnal effects, etc) and high and low temperatures is to view the finer temporal resolution.

You can view my weather station in Carlsbad at DW5683 on any of those maps linked above. The data is archived every 5 minutes too at Mesowest/ROMAN so you can easily retrieve any date.

**Disclaimer: NOAA or NWS does not operate, fund or support these private weather stations but may recommend placement. NOAA provides a server to distribute the data at the owner's discretion.**

## NWS upload to local office

Contact Miguel Miller (Miguel.Miller@noaa.gov) for a **local ID** (in addition to CWOP) and for our NWS office to ingest your weather data every hour (see configuration image).



This image shows various configuration windows that you must select and change.

## Verify your data is uploading to CWOP

1. Follow this map here.  
[http://www.wrh.noaa.gov/map/?obs=true&wfo=sgx&basemap=OpenStreetMap&boundaries=true,false&obs\\_popup=true](http://www.wrh.noaa.gov/map/?obs=true&wfo=sgx&basemap=OpenStreetMap&boundaries=true,false&obs_popup=true) (or [weather.gov/SanDiego](http://weather.gov/SanDiego) "observations")
2. *CWOP will take about a week for the data to be active on ARPS (as the above map updates).*  
<http://www.findu.com/cgi-bin/wxpage.cgi?call=dw5683> (see stations here)  
<http://aprs.fi/weather/>  
<http://www.findu.com/citizenweather/signup.html>

That will tell you if your data is every 5 minutes and CWOP. The data will also push hourly data to our AWIPS (internal system) as well. Then you should also have our office turn OFF, the ingest and push, but keep the ingest for your hourly observations (different ID).