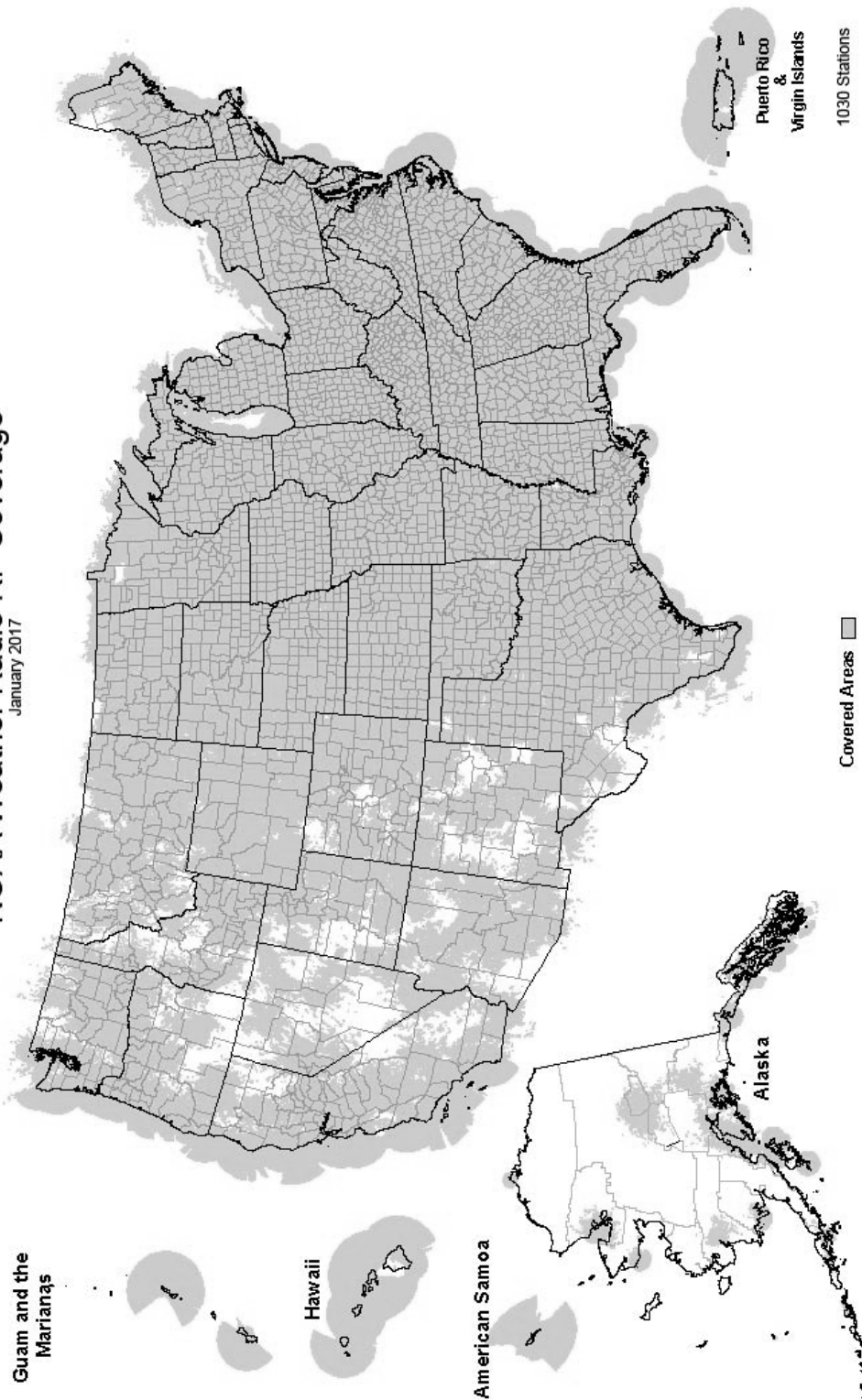
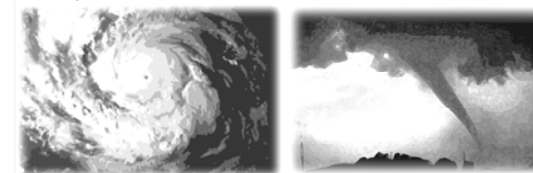


NOAA Weather Radio RF Coverage  
January 2017



NOAA/PA 94062  
Rev January 2017



**The Voice of NOAA's  
National Weather Service**

< Over 1000 Transmitters >

**Broadcasting Continuous  
Weather Information on the  
Following Frequencies:**

- 162.400 MHz
- 162.425 MHz
- 162.450 MHz
- 162.475 MHz
- 162.500 MHz
- 162.525 MHz
- 162.550 MHz

U.S. Department of Commerce  
National Oceanic and Atmospheric Administration  
National Weather Service

<http://www.weather.gov/nwr/>

# NOAA WEATHER RADIO

The Voice of NOAA's National Weather Service

<http://www.weather.gov/nwr>

NOAA Weather Radio is a service of the National Oceanic and Atmospheric Administration (NOAA) of the U.S. Department of Commerce. As the "voice of the National Weather Service," it provides continuous broadcasts (24 hours a day) of the latest weather information from local National Weather Service offices. Weather messages are repeated every 4 to 6 minutes and are routinely updated every 1 to 6 hours or more frequently in rapidly changing local weather or if a nearby natural hazardous or manmade condition exists.



The regular broadcasts are specifically tailored to weather information needs of the people within the service area of the transmitter. For example, in addition to general weather information, stations in coastal areas provide information of interest to mariners. Other specialized information, such as hydrological forecasts and other climate data may be broadcast.

During severe weather, National Weather Service

forecasters can interrupt the routine weather broadcasts and insert special warning messages concerning imminent threats to life and property. The forecaster can also add special signals to warnings that trigger "alerting" features of specially equipped receivers. In the simplest case, this signal activates audible or visual alarms, indicating that an emergency condition exists within the broadcast areas of the station being monitored, and alerts the listener to turn up the volume and stay tuned for more information. More sophisticated receivers are automatically turned on and set to an audible volume when an alert is received.

In the most sophisticated alerting system, NOAA Weather Radio Specific Area Message Encoding (SAME), digital coding is employed to activate only those special receivers programmed for specific emergency conditions in specific area, typically a county. SAME can activate specially equipped radio and cable television receivers and provide a short text message that identifies the location and type of emergency. SAME is the primary activator for the FCC Emergency Alert System (EAS).

To program NWR SAME receivers with the proper county(s) and marine area(s) of choice, you need to know the 6-digit SAME code number(s) for that county(s). Once you have your code number(s), follow the manufacturer's directions for programming your NWR SAME receiver. You can obtain your SAME code numbers by dialing:

**888-NWR-SAME (888-697-7263) – Voice & TTY/TTD Accessible**

Under a January 1975 White House policy statement, NOAA Weather Radio was designated the sole Government-operated radio system to provide direct warning into private homes for both

San Juan .....	162.400
RHODE ISLAND	
Providence .....	162.400
SOUTH CAROLINA	
Aiken .....	162.450
Aynor .....	162.400
Barnwell .....	162.500
Beaufort .....	162.450
Charleston .....	162.550
Cheraw .....	162.450
Columbia .....	162.400
Cross .....	162.475
Florence .....	162.550
Georgetown .....	162.500
Greenville .....	162.550
Jasper County .....	162.400
Kirksey .....	162.425
Orangeburg .....	162.525
Rock Hill .....	162.425
Sumter .....	162.425

SOUTH DAKOTA	
Aberdeen .....	162.475
Arlington .....	162.525
Faith .....	162.475
Firesteel .....	162.425
Hot Springs .....	162.425
Lead .....	162.525
Lowry .....	162.500
Mitchell .....	162.450
Philip .....	162.450
Pickstown .....	162.425
Pierre .....	162.400
Porcupine .....	162.500
Rapid City .....	162.550
Reliance .....	162.525
Sioux Falls .....	162.400
South Shore .....	162.425
Wessington .....	162.550
White River .....	162.550

TENNESSEE	
Bristol .....	162.550
Centerville .....	162.450
Chattanooga .....	162.550
Clarksville .....	162.500
Clifton .....	162.500
Cookeville .....	162.400
Dyersburg .....	162.500
Hickman .....	162.500
Jackson .....	162.550
Knoxville .....	162.475
La Follette .....	162.450
Lafayette .....	162.525
Lawrenceburg .....	162.425
Lobelville .....	162.525
Memphis .....	162.475
Nashville .....	162.550
Shelbyville .....	162.475
Spencer .....	162.450
Vale .....	162.450
Waverly .....	162.400
Winchester .....	162.525

TEXAS	
Abilene .....	162.400
Alpine .....	162.550
Amarillo .....	162.550
Austin .....	162.400
Bay City .....	162.425
Beaumont .....	162.475

Big Spring .....	162.475
Borger .....	162.400
Brownsville .....	162.550
Bryan .....	162.550
Burkeville .....	162.425
Carrizo Springs .....	162.550
Center .....	162.525
Childress .....	162.525
Cisco .....	162.500
Coleman .....	162.475
Corpus Christi .....	162.550
Corsicana .....	162.525
Cumby .....	162.500
Dallas .....	162.400
Del Rio .....	162.400
D'Hanis .....	162.525
Dickens .....	162.500
Dilley .....	162.500
El Paso .....	162.475
El Paso Spanish .....	162.550
Fort Worth .....	162.550
Galveston .....	162.550
Gilmer .....	162.425
Gonzales .....	162.525
Guadalupe Mt Nat'l. Park .....	162.525
Harlingen Spanish .....	162.450
Junction .....	162.475
Kerrville .....	162.450
La Grange .....	162.500
Laredo .....	162.550
Llano .....	162.425
Lubbock .....	162.400
Lufkin .....	162.550
Marietta .....	162.525
Miami .....	162.450
Midland/Odessa .....	162.400
Milano .....	162.525
Mineral Wells .....	162.525
Muenster .....	162.425
New Taiton .....	162.450
Onalaska .....	162.500
Ozona .....	162.500
Palestine .....	162.450
Paris .....	162.550
Pecos .....	162.450
Perryton .....	162.475
Pharr .....	162.400
Pharr Spanish .....	162.475
Plainview .....	162.450
Port O'Connor .....	162.475
Richland Springs .....	162.525
Richmond .....	162.475
Rio Grande City .....	162.425
Riviera .....	162.525
San Angelo .....	162.550
San Antonio .....	162.550
Seguin .....	162.475
Seminole .....	162.425
Sherman .....	162.475
Stephenville .....	162.450
Summerfield .....	162.500
Sweetwater .....	162.425
Texarkana .....	162.550
Three Rivers .....	162.450
Throckmorton .....	162.425
Tomball .....	162.400
Tyler .....	162.475
Uvalde .....	162.425
Victoria .....	162.400
Waco .....	162.475
Wichita Falls .....	162.475

UTAH	
Bear Lake .....	162.500
Castle Dale .....	162.500
Coalville/ Park City .....	162.475
Escalante .....	162.425
Lake Powell .....	162.550
Logan .....	162.400
Manti .....	162.425
Milford/Cedar City .....	162.400
Moab .....	162.475
Monticello .....	162.450
Salt Lake City .....	162.550
St. George .....	162.475
Tabiona .....	162.550
Tooele (South Mountain) .....	162.450
Tooele (Vernon Hills) .....	162.525
Vernal .....	162.400
Wendover .....	162.475

VERMONT	
Burlington .....	162.400
Castleton .....	162.500
Marlboro .....	162.425
St. Johnsbury .....	162.425
Windsor .....	162.475

VIRGIN ISLANDS	
St. Croix .....	162.500

VIRGINIA	
Accomack .....	162.525
Covesville .....	162.450
Fredericksburg .....	162.425
Heathsville .....	162.400
Lynchburg .....	162.550
Manassas .....	162.550
Norfolk .....	162.550
Richlands .....	162.425
Richmond .....	162.475
Roanoke .....	162.475
Sand Mtn .....	162.450
South Boston .....	162.525

WASHINGTON	
Astoria .....	162.400
Capitol Peak .....	162.475
Cle Elum .....	162.400
Davis Peak .....	162.525
Dayton .....	162.525
Forks .....	162.425
H Street - Blaine Area .....	162.525
Neah Bay .....	162.550
Okanogan .....	162.525
Plymouth .....	162.425
Puget Sound Marine .....	162.425
Randle .....	162.425
Richland .....	162.450
Seattle .....	162.550
Spokane .....	162.400
Wenatchee .....	162.475
Yakima .....	162.550

WEST VIRGINIA	
Backbone Mountain .....	162.450

Beckley .....	162.550
Charleston .....	162.400
Clarksburg .....	162.550
Garfield .....	162.500
Gilbert .....	162.475
Greggs Knob .....	162.500
Hinton .....	162.425
Monterville .....	162.525
Moorefield .....	162.400
Morgantown .....	162.475
Sutton .....	162.450

WISCONSIN	
Ashland .....	162.525
Baraboo .....	162.450
Black River Falls .....	162.500
Coloma .....	162.400
Crandon .....	162.450
Dubuque .....	162.400
Fond Du Lac .....	162.500
Green Bay .....	162.550
Gresham .....	162.500
Janesville .....	162.425
Ladysmith .....	162.550
Madison .....	162.550
Menomonie .....	162.400
Milwaukee .....	162.400
New London .....	162.525
Park Falls .....	162.500
Prairie Du Chien .....	162.500
Racine .....	162.450
Rhineland .....	162.400
Richland Center .....	162.475
Sheboygan .....	162.525
Sister Bay .....	162.425
Spooner .....	162.475
Tomah .....	162.525
Wausau .....	162.475
Wausaukee .....	162.400
Winona .....	162.425
Withee .....	162.425

WYOMING	
Afton .....	162.475
Casper .....	162.400
Cheyenne .....	162.550
Cody .....	162.400
Dubois .....	162.450
Elk Plaza .....	162.425
Evanston .....	162.450
Gillette .....	162.500
Glendo .....	162.450
Grant Village .....	162.450
Jackson .....	162.525
Kaycee .....	162.550
Kemmerer .....	162.525
Lander .....	162.475
Newcastle .....	162.475
Pinedale .....	162.500
Rawlins .....	162.425
Rock Springs .....	162.550
Sheridan .....	162.475
Thermopolis .....	162.500
Worland .....	162.525

The National Weather Service requests your assistance in reporting any outages of NOAA Weather Broadcast Stations.

Please use our Toll Free Number (888) 697-7263 or send an Email to [nwroutage@noaa.gov](mailto:nwroutage@noaa.gov) to report the outage.

Doniphan .....	162.450	Ord.....	162.525
El Dorado Springs.....	162.475	Oshkosh .....	162.525
Eldon .....	162.550	Scottsbluff .....	162.475
Fredericktown .....	162.500	Shubert .....	162.500
Gainesville .....	162.425	Sidney .....	162.500
Hannibal.....	162.475	Superior.....	162.525
Hermitage .....	162.450	Trenton .....	162.500
Jamestown.....	162.425	Valentine.....	162.450
Joplin .....	162.550	Yankton .....	162.500
Kansas City.....	162.550		
La Plata.....	162.525		
Lancaster .....	162.550		
Maryville.....	162.425		
Medill .....	162.450		
Neosho .....	162.450		
Piedmont.....	162.425		
Springfield.....	162.400		
St. Louis.....	162.550		
Summersville .....	162.475		
Trenton .....	162.500		
Wardell.....	162.525		
West Plains.....	162.525		

<b>MONTANA</b>			
Baker .....	162.550		
Belgian Hill.....	162.500		
Billings .....	162.550		
Bozeman .....	162.500		
Broadus .....	162.425		
Browning.....	162.525		
Butte .....	162.550		
Circle .....	162.550		
Dillon .....	162.475		
Ekalaka.....	162.475		
Forsyth.....	162.525		
Glasgow.....	162.400		
Glendive.....	162.475		
Glentana .....	162.525		
Great Falls .....	162.550		
Hardin .....	162.450		
Havre .....	162.400		
Helena .....	162.400		
Jordan.....	162.500		
Kalispell .....	162.550		
Lewistown .....	162.500		
Livingston.....	162.525		
Malta .....	162.475		
Miles City .....	162.400		
Missoula.....	162.400		
Plentywood .....	162.475		
Poplar .....	162.425		
Ryegate .....	162.450		
Scobey.....	162.450		
Wibaux.....	162.500		
Winnett.....	162.400		

<b>NEVADA</b>			
Battle Mtn.....	162.425		
Bullhead City.....	162.500		
Elko.....	162.550		
Ely.....	162.400		
Eureka .....	162.550		
Fernley.....	162.450		
Hawthorne .....	162.475		
Jackpot .....	162.500		
Las Vegas.....	162.550		
Owyhee .....	162.450		
Pahrump.....	162.400		
Reno.....	162.550		
Tonopah .....	162.400		
Winnemucca.....	162.400		

<b>NEW HAMPSHIRE</b>			
Clarksville.....	162.400		
Concord .....	162.400		
Deerfield .....	162.450		
Hanover .....	162.525		
Holderness.....	162.550		
Mt. Washington.....	162.500		
Pack Monadnock .....	162.525		

<b>NEW JERSEY</b>			
Atlantic City.....	162.400		
Hardyston .....	162.500		
Southard .....	162.450		

<b>NEW MEXICO</b>			
Albuquerque .....	162.400		
Artesia .....	162.425		
Carlsbad .....	162.475		
Des Moines.....	162.550		
Farmington.....	162.475		
Hobbs .....	162.400		
Las Cruces.....	162.400		
Portales .....	162.475		
Roswell .....	162.450		
Ruidoso .....	162.550		
Santa Fe .....	162.550		
Silver City.....	162.425		

<b>NEW YORK</b>			
Albany .....	162.550		
Binghamton.....	162.475		
Buffalo .....	162.550		
Call Hill .....	162.425		
Cattaraugus .....	162.425		
Cooperstown.....	162.450		
Elmira .....	162.400		
Frewsburg.....	162.525		
Gore Mtn.....	162.450		
Highland .....	162.475		
Ithaca.....	162.500		
Lyons.....	162.475		
Middleville .....	162.425		
Mt. Washington.....	162.450		
Mullen .....	162.425		
Norfolk .....	162.550		
Norwich .....	162.525		
North Platte.....	162.550		
Omaha .....	162.400		
Rochester .....	162.400		

Spencerport .....	162.525		
Stamford.....	162.400		
Syracuse.....	162.550		
Walton .....	162.425		
Watertown .....	162.475		
White Hill .....	162.525		

<b>NORTH CAROLINA</b>			
Asheville .....	162.400		
Buck Mountain.....	162.500		
Cape Hatteras .....	162.475		
Chapel Hill .....	162.550		
Charlotte .....	162.475		
Ellerbe .....	162.400		
Garner .....	162.450		
Henderson .....	162.500		
Linville .....	162.450		
Mamie.....	162.425		
Margarettsville .....	162.450		
Mooreville .....	162.525		
Mount Jefferson.....	162.500		
New Bern .....	162.400		
Robbinsville .....	162.525		
Rocky Mount.....	162.475		
Saint Pauls .....	162.475		
Warsaw .....	162.425		
Windsor .....	162.525		
Winnabow.....	162.550		
Winston-Salem .....	162.400		

<b>NORTH DAKOTA</b>			
Bismarck .....	162.475		
Cavalier .....	162.450		
Dickinson.....	162.400		
Fargo .....	162.475		
Fort Ransom.....	162.525		
Grand Forks.....	162.475		
Jamestown .....	162.550		
Langdon .....	162.500		
Minot.....	162.400		
New Town.....	162.525		
Petersburg.....	162.400		
Rolla .....	162.475		
Scranton .....	162.525		
Sheyenne .....	162.525		
Steele .....	162.400		
Webster .....	162.425		
Williston .....	162.550		
Willow City.....	162.450		

<b>NORTHERN MARIANA ISLANDS</b>			
Saipan .....	162.550		

<b>OHIO</b>			
Akron .....	162.400		
Athens .....	162.425		
Bridgeport .....	162.525		
Carey .....	162.525		
Chillicothe.....	162.500		
Cleveland .....	162.550		
Columbus .....	162.550		
Dayton .....	162.475		
Grafton .....	162.500		
High Hill .....	162.475		
Lima .....	162.400		
Mansfield .....	162.450		
Marietta .....	162.400		
New Philadelphia.....	162.425		
Otway .....	162.525		
Sandusky.....	162.400		
Toledo .....	162.500		
Youngstown.....	162.500		

<b>PUERTO RICO</b>			
Maricao.....	162.550		

<b>OKLAHOMA</b>	
Altus .....	162.425
Antlers .....	162.400
Ardmore.....	162.525
Atoka .....	162.500
Bartlesville .....	162.425
Broken Bow.....	162.450
Chickasha.....	162.450
Clinton .....	162.525
Enid .....	162.475
Grove.....	162.525
Guymon.....	162.500
Lawton .....	162.550
McAlester.....	162.475
Oklahoma City .....	162.400
Oktaha .....	162.525
Ponca City .....	162.450
Stillwater .....	162.500
Tulsa.....	162.550
Wewoka.....	162.550
Woodward .....	162.500

<b>OREGON</b>	
Bend/Redmond.....	162.500
Brookings .....	162.550
Burns Butte.....	162.475
Cape Blanco .....	162.425
Carney Butte.....	162.475
Coos Bay.....	162.400
Eugene .....	162.400
Florence .....	162.500
Fossil.....	162.550
Hepner .....	162.425
John Day .....	162.500
Klamath Falls.....	162.550
Medford .....	162.400
Mt Hebo.....	162.525
Mt. Ashland .....	162.475
Neahkahnie .....	162.425
Newport .....	162.550
Portland.....	162.550
Reedsport.....	162.525
Roseburg.....	162.550
Salem .....	162.475
Spout Springs.....	162.400
The Dalles .....	162.400
Tillamook .....	162.475

<b>PENNSYLVANIA</b>	
Allentown.....	162.400
Altoona .....	162.425
Clearfield .....	162.550
Coudersport.....	162.500
Erie .....	162.400
Harrisburg.....	162.550
Hibernia Park.....	162.425
Honesdale .....	162.450
Huntingdon .....	162.525
Johnstown .....	162.400
Meadville .....	162.475
Parker .....	162.425
Philadelphia.....	162.475
Pittsburgh.....	162.550
Reynoldsville.....	162.500
State College.....	162.475
Towanda.....	162.525
Warren.....	162.450
Wellsboro .....	162.475
Wilkes-Barre.....	162.550
Williamsport.....	162.400

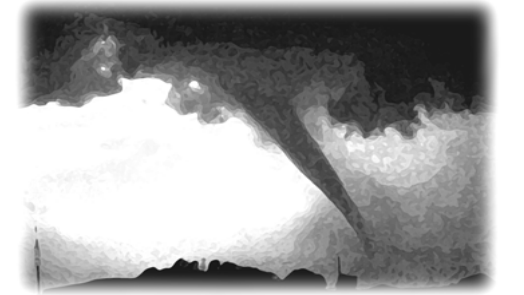
natural disasters and nuclear attack. This concept has been expanded to include warnings for all hazardous conditions that pose a threat to life and safety, both at a local and national level. As a result, NOAA Weather Radio is being better integrated with other National Weather Service systems to provide state and local emergency managers and other warning providers better access to local weather forecast offices, allowing hazard warnings of all types to be broadcast on NOAA Weather Radio within seconds

NOAA Weather Radio currently broadcasts from 1030 stations in fifty states, Puerto Rico, the U.S. Virgin Islands, American Samoa, Guam, and Saipan on seven frequencies in the VHF band, ranging from 162.400 to 162.550 megahertz (MHz). These frequencies are outside the normal AM or FM broadcast bands.

Special radios that receive only NOAA Weather Radio, both with and without special alerting features, are available from numerous manufacturers. In addition, other manufacturers are including NWR capability in a variety of receivers. NOAA Weather Radio capability is currently available on automobile, aircraft, marine, citizens band, and standard AM/FM radios as well as communications receivers, transceivers, scanners, and cable TV.

By nature and design, NOAA Weather Radio coverage is limited to an area within 40 miles of the transmitter. The quality of reception is dictated by transmitter distance, local terrain, and the quality and location of the receiver. In general, those using a high quality receiver on flat terrain or at sea can expect reliable reception beyond 40 miles. Those with standard receivers, surrounded by large buildings in cities and those in mountain valleys may experience little or no reception at considerably less than 40 miles. If possible, a receiver should be tested in the location where it will be used prior to purchase.

NOAA Weather Radio is directly available to a large portion of the U.S. population. The National Weather Service is currently engaged in a program to increase coverage to at least 95 percent of the population.



If you have a question regarding the technical aspects of NOAA Weather Radio such as transmitter location, reception, and characteristics or if you are interested in becoming a partner with the National Weather Service to identify or provide local funding and/or facilities for the installation of a NOAA Weather Radio transmitter, please contact your local National Weather Service Office or send a letter to:

National Weather Service  
 Attn: Dissemination Systems Branch, W/OPS17  
 1325 East-West Highway  
 Silver Spring, MD 20910

The following is a listing of operational stations by state. For specific coverage information for your local area please visit our website at:

<http://www.weather.gov/nwr/>

**ALABAMA**

Anniston.....	162.475
Arab.....	162.525
Auburn.....	162.525
Birmingham.....	162.550
Brewton.....	162.475
Columbus.....	162.400
Cullman.....	162.450
Demopolis.....	162.475
Dozier.....	162.550
Florence.....	162.475
Greenville.....	162.425
Henagar.....	162.500
Huntsville.....	162.400
Jackson.....	162.500
Louisville.....	162.475
Mobile.....	162.550
Montgomery.....	162.400
Oneonta.....	162.425
Selma.....	162.450
Tuscaloosa.....	162.400
Winfield.....	162.525

**ALASKA**

Althorp Peak.....	162.425
Anchorage.....	162.550
Barrow.....	162.550
Bede Mountain.....	162.450
Bethel.....	162.550
Cape Fanshaw.....	162.425
Cape Gull.....	162.500
Cape Hinchinbrook.....	162.525
Cold Bay.....	162.425
Cordova.....	162.400
Craig.....	162.475
Dillingham.....	162.500
Duke Island.....	162.450
East Point.....	162.500
Fairbanks.....	162.550
Glennallen.....	162.550
Gravina Island.....	162.525
Haines.....	162.400
Homer.....	162.400
Juneau.....	162.550
Ketchikan.....	162.550
Kodiak.....	162.550
Kotzebue.....	162.550
Manleyville.....	162.500
Marmot Island.....	162.500
Mt. McArthur.....	162.525
Mt. Robert Barron.....	162.450
Nenana.....	162.400
Ninilchik.....	162.550
Nome.....	162.550
Pillar Mtn.....	162.525
Point Pigot.....	162.450
Potato Point.....	162.425
Raspberry Island.....	162.425
Rugged Island.....	162.425
Saint Paul Island.....	162.525
Sand Point.....	162.550
Seward.....	162.550
Sitka.....	162.550
Sitkinak Dome.....	162.450
Soldotna.....	162.475

Sukkwan Island.....	162.425
Tuklung Mtn.....	162.425
Unalaska.....	162.550
Valdez.....	162.550
Wasilla.....	162.400
Whittier.....	162.475
Wrangell.....	162.400
Yakutat.....	162.400
Zarembo Island.....	162.450

**AMERICAN SAMOA**

Mt. Oloatele.....	162.550
Pago Pago.....	162.400

**ARIZONA**

Flagstaff.....	162.400
Globe.....	162.500
Grand Canyon.....	162.475
Greer.....	162.525
Kingman.....	162.425
Lake Havasu.....	162.400
Nogales.....	162.500
Payson Gila County N.....	162.425
Phoenix.....	162.550
Prescott.....	162.525
Safford.....	162.550
Show Low.....	162.400
Tucson.....	162.400
Window Rock.....	162.550

**ARKANSAS**

Cherokee Village.....	162.475
El Dorado.....	162.525
Fayetteville.....	162.475
Fort Smith.....	162.550
Fountain Hill.....	162.475
Gurdon.....	162.475
Harrison.....	162.525
High Peak.....	162.425
Jonesboro.....	162.550
Little Rock.....	162.550
Marvell.....	162.525
Mena.....	162.400
Morrilton.....	162.475
Mountain View.....	162.450
Russell.....	162.400
Russellville.....	162.525
Springdale.....	162.400
Star City.....	162.400
Yellville.....	162.500

**CALIFORNIA**

Avalon.....	162.525
Bakersfield.....	162.550
Big Rock Ridge.....	162.500
Bishop.....	162.425
Coachella.....	162.400
Coachella / Spanish.....	162.525
Contra Costa County.....	162.425
Conway Summit.....	162.525
El Paso Mtns.....	162.425
Eureka.....	162.400
Fresno.....	162.400
Grass Valley.....	162.400
Horse Mtn.....	162.450
Los Angeles.....	162.550
Malibu Marine.....	162.425
Monterey.....	162.550
Monterey Marine.....	162.450
Point Arena.....	162.550
Redding.....	162.550
Sacramento.....	162.550
San Diego.....	162.400

San Diego Marine.....	162.425
San Francisco.....	162.400
San Luis Obispo.....	162.550
San Simeon.....	162.525
Sandberg.....	162.425
Santa Ana.....	162.450
Santa Barbara.....	162.400
Santa Barbara Marine.....	162.475
Sonoma County.....	162.475
Ukiah.....	162.525
Victorville.....	162.500
Yosemite.....	162.450
Yuma.....	162.550

**COLORADO**

Alamosa.....	162.475
Anton.....	162.425
Bethune.....	162.525
Boyer.....	162.450
Canon City.....	162.500
Colorado Springs.....	162.475
Deer Trail.....	162.500
Denver.....	162.550
Dillon.....	162.400
Durango.....	162.425
Eagle.....	162.450
Fort Collins/Ault.....	162.450
Fort Morgan.....	162.525
Fowler.....	162.425
Franktown.....	162.450
Glenwood Springs.....	162.500
Grand Junction.....	162.550
Greeley.....	162.400
La Junta.....	162.500
Lamar.....	162.525
Mead/Longmont.....	162.475
Montrose.....	162.450
North Cottonwood.....	162.500
Pueblo.....	162.400
Springfield.....	162.400
Steamboat Springs.....	162.525
Sterling.....	162.400
Mena.....	162.450
Wray.....	162.475

**CONNECTICUT**

Cornwall.....	162.500
Hartford.....	162.475
Meriden.....	162.400
New London.....	162.550

**DELAWARE**

Lewes.....	162.550
Salisbury.....	162.475

**DISTRICT OF COLUMBIA**

Washington DC.....	162.450
--------------------	---------

**FLORIDA**

Belle Glade.....	162.400
Daytona Beach.....	162.400
East Point.....	162.500
Fort Myers.....	162.475
Fort Pierce.....	162.425
Gainesville.....	162.475
Hialeah Spanish.....	162.500
Inverness.....	162.400
Jacksonville.....	162.550
Key West.....	162.400
Lake City.....	162.400
Largo.....	162.450
Melbourne.....	162.550
Miami.....	162.550

Morrison.....	162.550
Naples.....	162.525
Ocala.....	162.525
Orlando.....	162.475
Palatka.....	162.425
Panama City.....	162.550
Pensacola.....	162.400
Princeton.....	162.425
Salem.....	162.425
Sebring.....	162.500
Sneads.....	162.425
Sumterville.....	162.500
Tallahassee.....	162.400
Tampa Bay.....	162.550
Tea Table Key.....	162.450
Venice.....	162.400
West Palm Beach.....	162.475
Westville.....	162.450

**GEORGIA**

Americus.....	162.425
Deer Trail.....	162.450
Athens.....	162.400
Atlanta.....	162.550
Augusta.....	162.550
Baxley.....	162.525
Blakely.....	162.525
Blue Ridge.....	162.475
Brasstown Bald.....	162.500
Brunswick.....	162.425
Buchanan.....	162.425
Chatsworth.....	162.400
Clayton.....	162.450
Cleveland.....	162.525
Eastman.....	162.400
Eatonton.....	162.525
Jesup.....	162.450
La Grange.....	162.450
Macon.....	162.475
Metter.....	162.425
Pelham.....	162.550
Sandersville.....	162.450
Summerville.....	162.450
Thomaston.....	162.500
Toccoa.....	162.425
Valdosta.....	162.500
Washington.....	162.500
Waycross.....	162.475
Waynesboro.....	162.425

**GUAM**

Guam.....	162.400
-----------	---------

**HAWAII**

Hawaii Kai.....	162.450
Kauai.....	162.400
Kulanii Cone.....	162.550
Maui.....	162.400
North Kohala.....	162.500
Oahu.....	162.550
South Point.....	162.550

**IDAHO**

Boise.....	162.550
Bonnors Ferry.....	162.500
Burley.....	162.475
Driggs.....	162.400
Grangeville.....	162.450
Lewiston.....	162.550
McCall.....	162.475
Orofino.....	162.500
Payette.....	162.400
Pocatello.....	162.550

Salmon.....	162.500
Sedgwick Peak.....	162.425
Sun Valley.....	162.450
Twin Falls.....	162.400

**ILLINOIS**

Bloomington.....	162.525
Champaign.....	162.550
Chester.....	162.450
Chicago.....	162.550
Crescent City.....	162.500
Crystal Lake.....	162.500
DeKalb.....	162.550
Dixon.....	162.525
Freeport.....	162.450
Galesburg.....	162.400
Hillsboro.....	162.425
Jacksonville.....	162.525
Jerseyville.....	162.450
Kankakee.....	162.525
Lockport.....	162.425
Macomb.....	162.500
Marion.....	162.425
McLeansboro.....	162.400
Newton.....	162.450
Odell.....	162.450
Paris.....	162.525
Peoria.....	162.475
Plano.....	162.400
Princeton.....	162.425
Quad Cities.....	162.550
Rockford.....	162.475
Salem.....	162.475
Shelbyville.....	162.500
Springfield.....	162.400

**INDIANA**

Angola.....	162.425
Bloomington.....	162.450
Edwardsport.....	162.425
Evansville.....	162.550
Fort Wayne.....	162.550
Georgia.....	162.500
Hebron.....	162.450
Indianapolis.....	162.550
Marion.....	162.450
Michigan City.....	162.500
Monticello/Lafayette.....	162.475
Muncie.....	162.425
New Albany.....	162.475
Newport.....	162.425
North Webster.....	162.500
Putnamville.....	162.400
Richmond.....	162.500
Seymour.....	162.525
South Bend.....	162.400

**IOWA**

Burlington.....	162.525
Carroll.....	162.425
Cedar Rapids.....	162.475
Decorah.....	162.525
Delaware.....	162.450
Denison.....	162.550
Des Moines.....	162.550
Essex.....	162.550
Fairfield.....	162.400
Forest City.....	162.500
Fort Dodge.....	162.400
Hancock/Pottawattam.....	162.525
Iowa Falls.....	162.525
Lake Rathbun.....	162.425
Lenox.....	162.450

Maquoketa.....	162.425
Marshalltown.....	162.500
Milford.....	162.550
Montezuma.....	162.450
Ottumwa.....	162.500
Ringsted.....	162.475
Snarborn.....	162.525
Sioux City.....	162.475
St. Ansgar.....	162.450
Storm Lake.....	162.450
Van Wert.....	162.475
Waterloo.....	162.550

**KANSAS**

Abilene.....	162.525
Beaumont.....	162.500
Belvidere.....	162.525
Blue Rapids.....	162.425
Chanute.....	162.400
Concordia.....	162.550
Dighton.....	162.525
Dodge City.....	162.475
Ellsworth.....	162.400
Gem.....	162.400
Great Bend.....	162.500
Halls Summit.....	162.425
Hays.....	162.450
Kirwin.....	162.500
Lenora.....	162.425
Meade.....	162.425
Parker.....	162.525
Saint Joseph.....	162.400
Sharon.....	162.400
Topeka.....	162.475
Tribune.....	162.550
Ullyses.....	162.450
Wichita.....	162.550

**KENTUCKY**

Ashland.....	162.550
Beattyville.....	162.500
Bowling Green.....	162.400
Burkesville.....	162.475
Campbellsville.....	162.525
Covington.....	162.550
East Madison County.....	162.525
Edmonton.....	162.450
Ekron.....	162.450
Elizabethtown.....	162.550
Frankfort.....	162.500
Frenchburg.....	162.475
Harlan.....	162.450
Hazard.....	162.475
Hopkinsville.....	162.450
Horse Cave.....	162.500
Irvine.....	162.475
Jackson.....	162.425
Lexington.....	162.400
London.....	162.475
Madison County.....	162.525
Madisonville.....	162.525
Manchester.....	162.400
Mayfield.....	162.475
Maysville.....	162.425
McKee.....	162.450
Moberly.....	162.525
Monticello.....	162.425
Morehead.....	162.400
Mount Vernon.....	162.425
Owenton.....	162.450
Paintsville.....	162.525
Phelps.....	162.500
Pikeville.....	162.400

Pineville.....	162.525
Somerset.....	162.550
Stanton.....	162.550
West Liberty.....	162.450
West Madison County.....	162.525
Whitesville.....	162.475
Williamsburg.....	162.500

**LOUISIANA**

Alexandria.....	162.475
Baton Rouge.....	162.400
Bogalusa.....	162.525
Buras.....	162.475
Lafayette.....	162.550
Lake Charles.....	162.400
Monroe.....	