



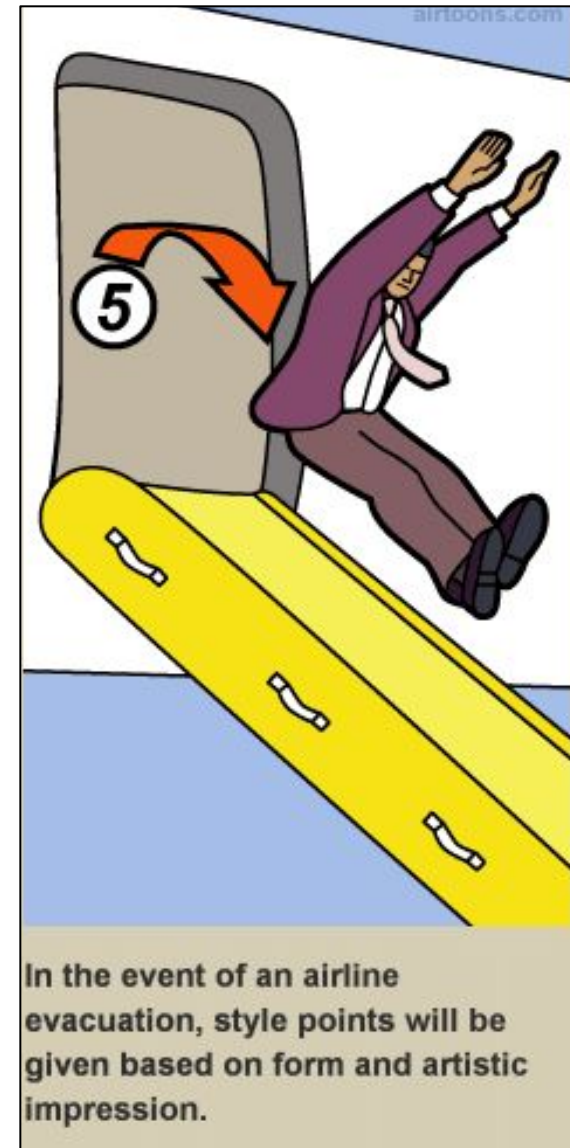
Leidos Flight Service: How to Co-Exist with Weather & Online Capabilities

SAWS X
4/22/2023

Jeff Arnold
Director of Innovation & Outreach

Topics

- Aviation Accidents Due to Weather & Stats
- Pop Quiz – Weather Briefing Myths
- Why do pilots call Flight Service?
- AC 91-92: Pilot's Guide to a Preflight Briefing
 - Added Value Briefings
 - Strategies to Transition
- SMS & Mobile Devices
- Priority Services
- Useful Online Resources



What this presentation WON'T give you...

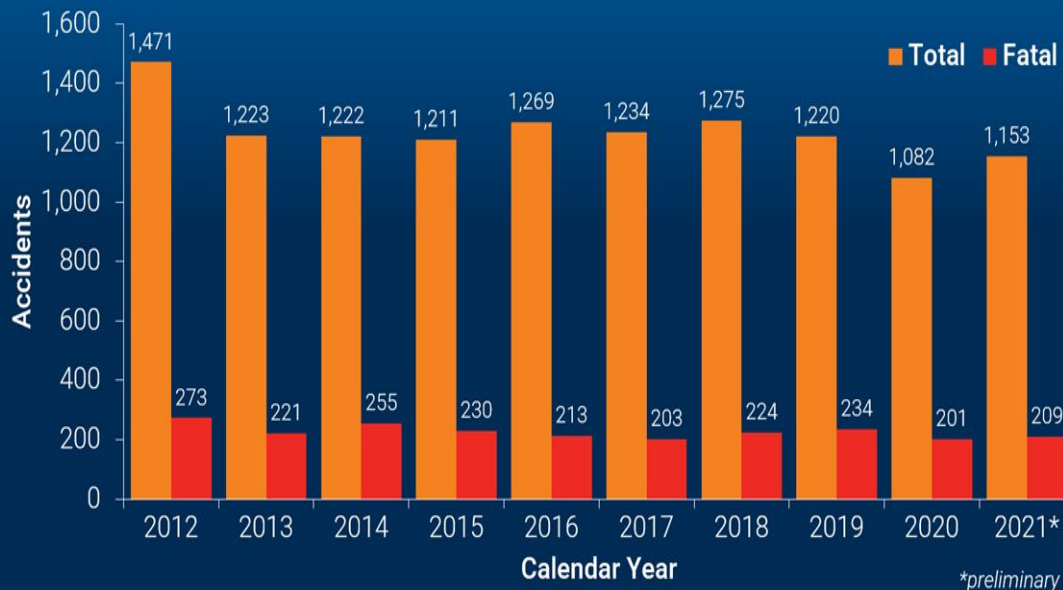
- **Solicit/Convert pilots from the product or vendor they routinely use: (Foreflight, Garmin, etc.)**
- **Teach weather & weather interpretation**

What this presentation WILL give you...

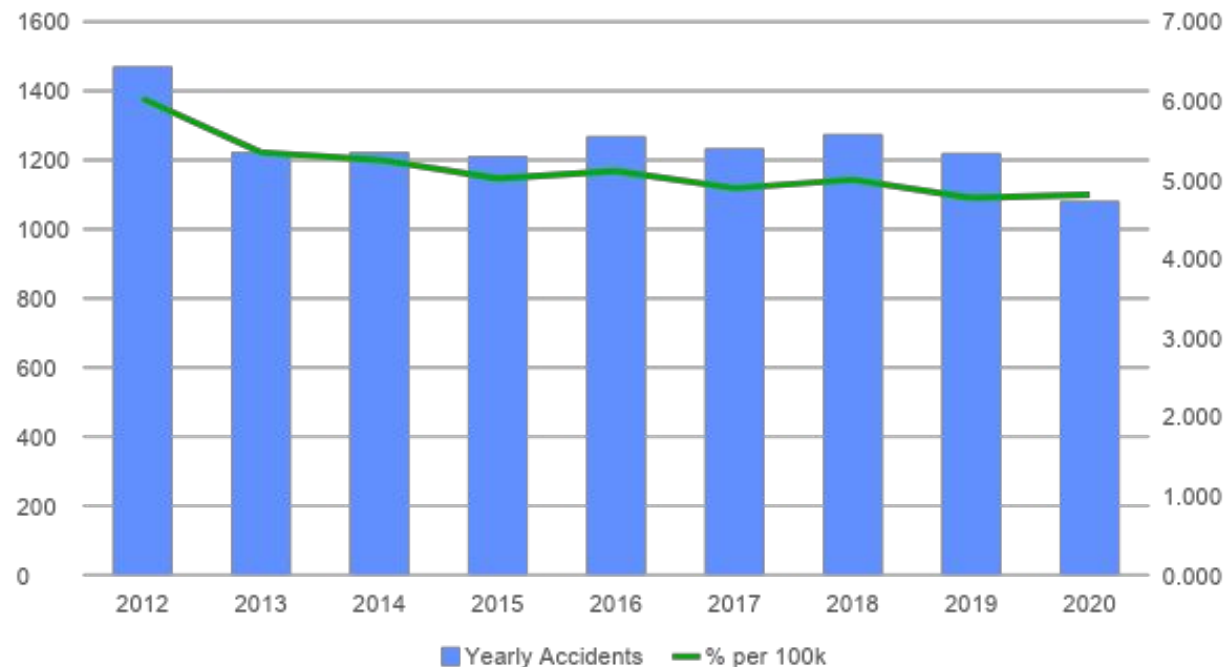
- **Insight on why self-briefing isn't as bad of an idea as it (initially) sounds**
- **How “self-briefing” is just another word for “learning WX”**
- **How you (& your family) can keep from becoming accident statistics**
- **How to be regulatory compliant w/FAR §91.103**
- **Transition tips for pilots starting or learning to self brief**
- **Information about our (free) services, changes to our system, and resources available to you**

Weather Driven Aviation Accidents

General Aviation Accidents: 2012-2021



Accidents / 100k Flight Hours



- ▶ Primarily in the General Aviation; Personal Flight category
- ▶ **VFR into IMC conditions continues to be the #1 cause of WX related fatalities**
- ▶ “Weather is often cited as a cause or contributing factor, accounting for roughly 25% of the accidents occurring in general aviation operations.”
- ▶ Andrew J. Fultz & Walker S. Ashley (2016): Fatal weather-related general aviation accidents in the United States, Physical Geography, DOI: 10.1080/02723646.2016.1211854

Source: NTSB 2022



Accidents

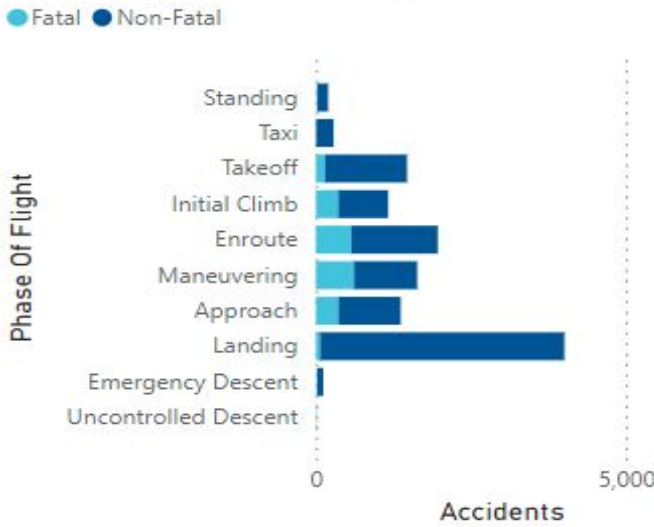
Findings

Safety Recommendations

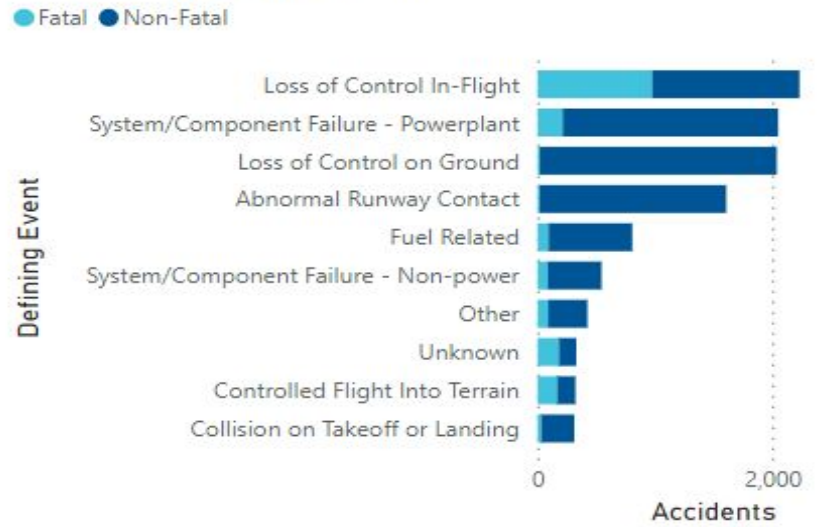
Accidents by Calendar Year



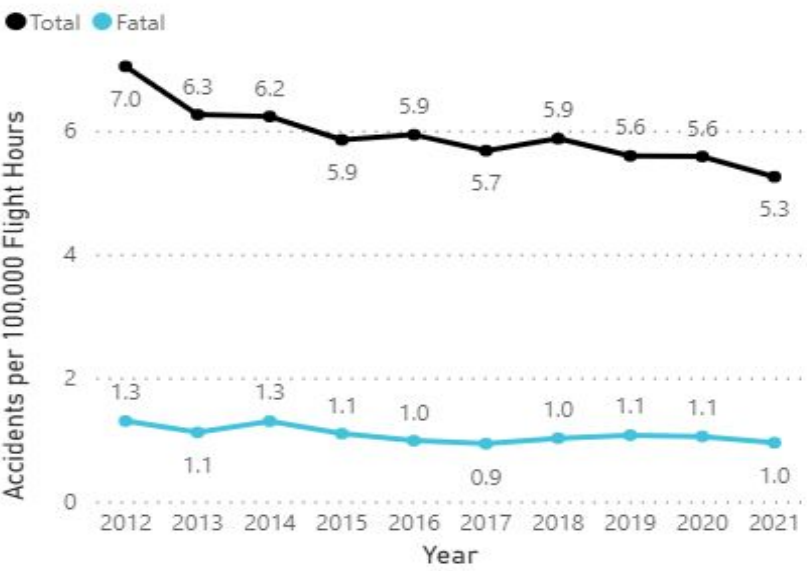
Accidents by Phase of Flight



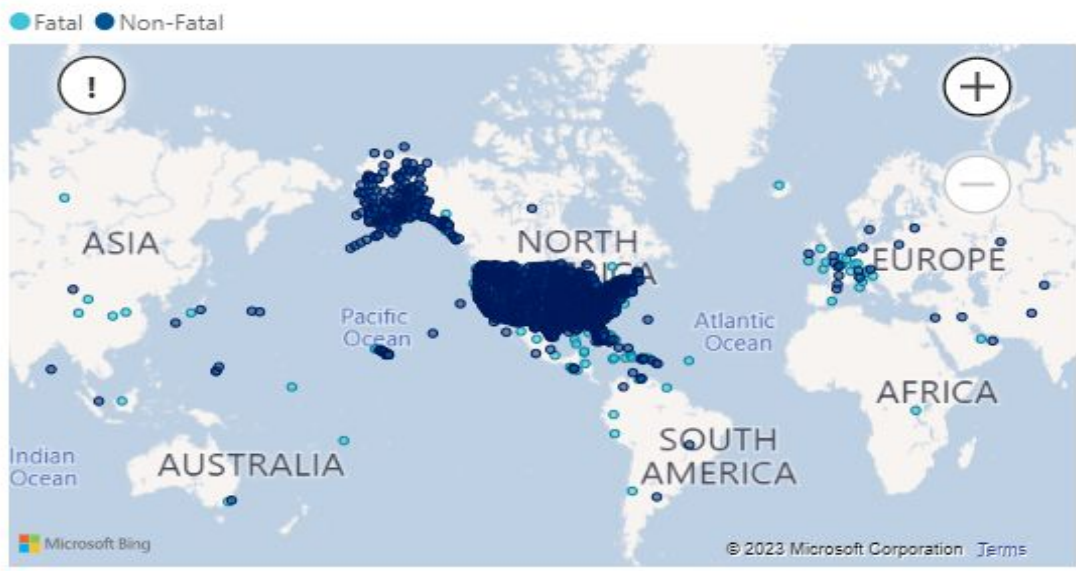
Accidents by Defining Event



Accident Rate by Calendar Year



Accident Locations



Summary Statistics		
12,368	2,269	3,817
Accidents	Fatal Accidents	Fatalities

Filters

Flight Operation Type

State/Region

[View Details](#)

[Clear Filters](#)



Accidents

Findings

Safety Recommendations

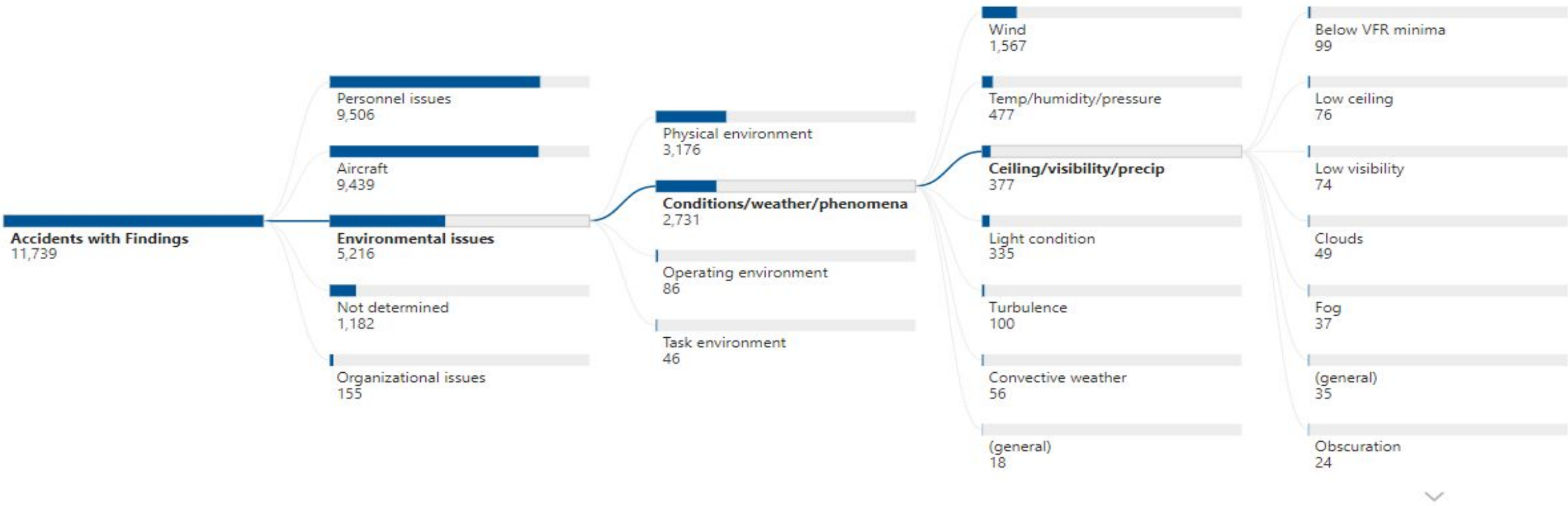
Accidents by Investigative Findings

Category ×
Environmental issues

Subcategory ×
Conditions/weather/phenomena

Section ×
Ceiling/visibility/precip

Subsection ×



Preset Filters

- Aircraft Control Findings
- Power Plant Findings
- Weather Findings

Additional Filters

Injury Level

- Select all
- Fatal
- Non-Fatal

Year

All

Flight Operation Type

All

View Details

Clear Filters

Pop Quiz

The Concept of a “legal briefing” or “certified briefing” is real and defined by the FAA.

False

A pilot needs to call Flight Service to be compliant with FAR 91.103 for preflight planning.

False

The FAA requires a self-briefing to be recorded or digitally logged as proof that the briefing was conducted.

False

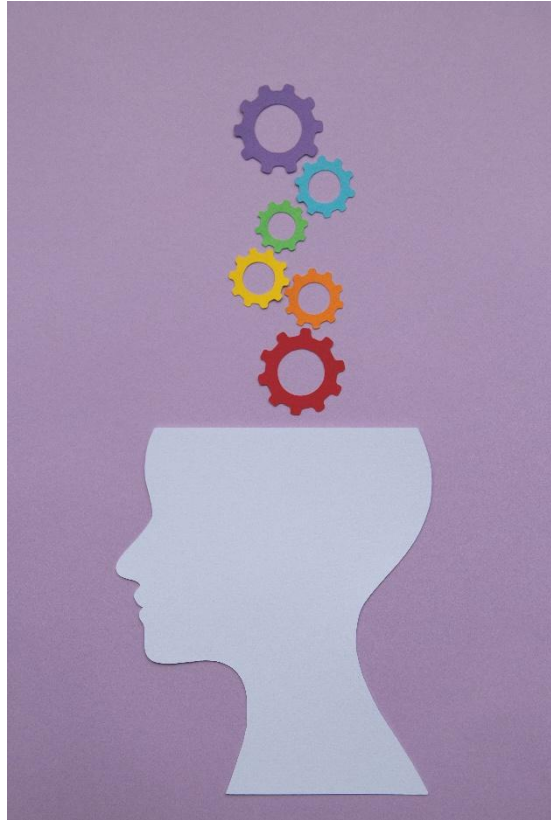
The FAA has described how a pilot may be compliant with FAR 91.103 while conducting a preflight self-briefing.

True

As part of its modernization, Flight Service will no longer provide phone services.

False

Why Do Pilots Call Leidos Flight Service?



- 14 CFR part 91, § 91.103 – Preflight Action
 - Each pilot in command shall, before beginning a flight, become familiar with all available information concerning that flight
- FAA Document References
 - Pilots encouraged to call Flight Service before every flight and for every aviation related question by CFI's
- Last minute check for TFRs and NOTAMs
 - Has anything changed since my briefing?
- Local Area Knowledge
 - Unable to obtain anywhere else
- Validation of a Self-briefing or 2nd Opinion
 - Have I come to the right conclusion about the weather?

AC 91-92: Pilot's Guide to a Preflight Briefing

Educational roadmap for the development and implementation of preflight self-briefings

- Flight Planning
- Weather Interpretation
- Risk Identification/Mitigation Skills

Adhering to the guidelines better prepares pilots to interpret and use real-time weather information

- Before departure
- En-route (in the cockpit using ADS-B)

Provides guidance for required preflight actions under Title 14 of the Code of Federal Regulations (14 CFR) part 91, § 91.103

Encourages pilots to use Flight Service (via phone) in a consultative capacity, when needed



As you proceed through your training, you may find the need to add, subtract, or otherwise customize this checklist to fit your specific needs.

3/15/21

AC 91-92
Appendix B

APPENDIX B. SAMPLE PREFLIGHT CHECKLIST

B.1 Outlook Briefing Elements (more than 6 hours until departure). Check for reported or forecast meteorological or aeronautical conditions that might influence or alter the proposed flight.

- Weather advisories (SIGMET, AIRMET, convective SIGMETs, CWAs, and Aviation Watch Notification Messages)
- Synopsis (type, location, and movement of weather systems and/or air masses)
- En route and destination forecast (alternate if needed)
- NOTAMs (e.g., airport/runway closures, air traffic delays, and TFRs)

B.2 Standard Briefing Elements.

- Adverse conditions (e.g., weather advisories, low-level wind shear, thunderstorms, icing, and frontal zones)
- Synopsis
- Current weather
- En route, destination, and alternate forecasts
- Winds aloft
- NOTAMs, TFRs, and PIREPs
- P40 (Camp David) and P56 (Washington DC); Washington, DC SFRA (if applicable)
- ATC delays

B.3 Abbreviated Briefing Elements (update on changes, up to 2 hours prior to flight).

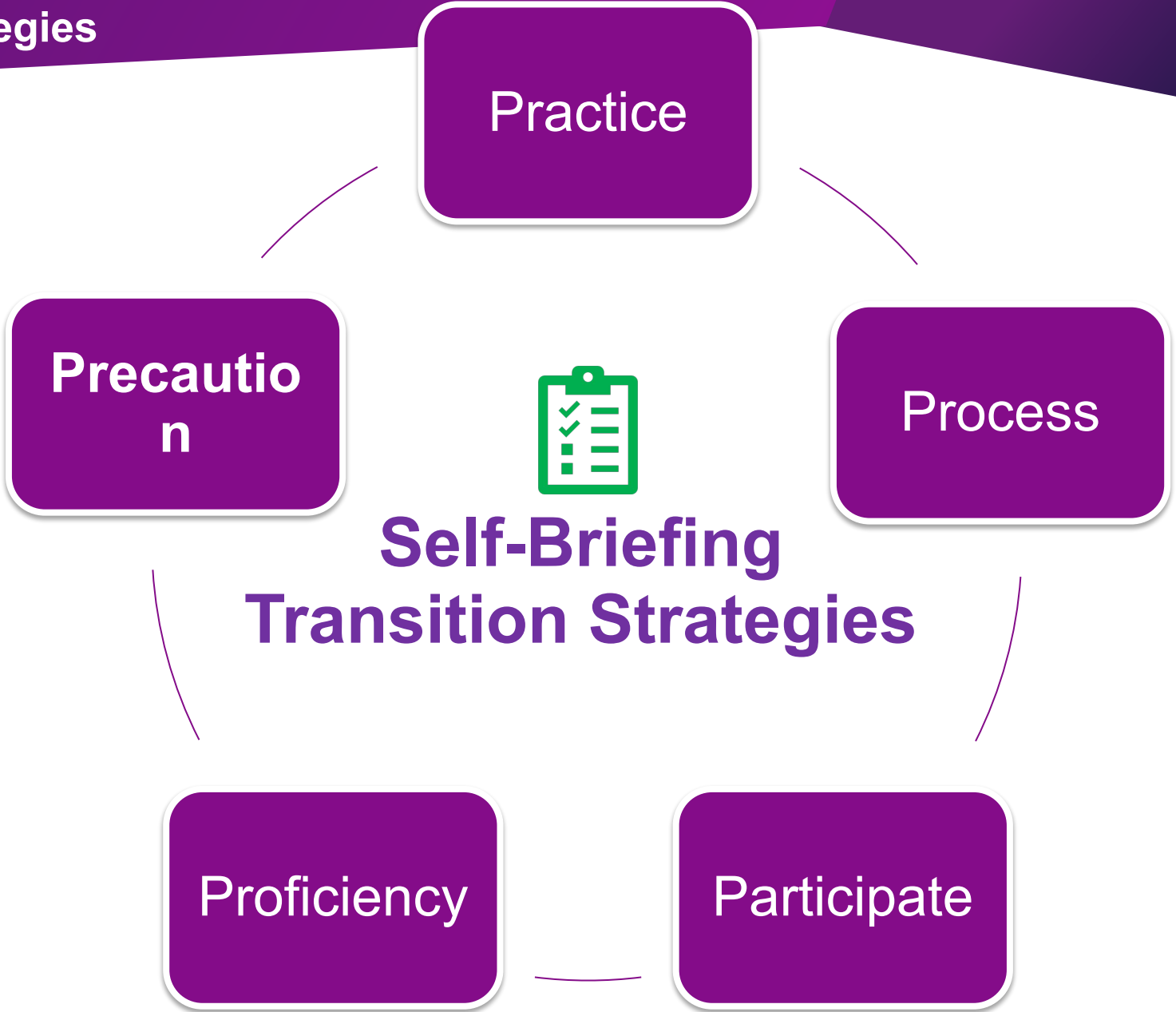
- Check updates to adverse conditions (reported or forecast) along the route of flight
- Check for any changes in meteorological and aeronautical conditions

B.4 Non-Weather-Related Checklist Items.

- IMSAFE
- PAVE
- Personal minimums
- Fuel requirements
- Alternate airports
- Traffic delays
- Takeoff and landing distance information for airports
- Aircraft performance items (e.g., airport elevation, runway slope and conditions, and Weight and Balance)
- RAIM check

“How do I increase my comfort with weather?”

- **Practice**
 - Daily 5 Minute Dry Run
- **Process**
 - Use a Self Brief Checklist
- **Participate**
 - Work with your resources: CFIs, Flight School Support, Flying Community, Online Resources, Ask Questions and Verify with Flight Service
- **Proficiency**
 - Continue learning using educational resources: VFR & IFR Wings Courses
- **Precaution**
 - When in doubt... sit it out!



3/15/21

AC 91-92
Appendix B

APPENDIX B. SAMPLE PREFLIGHT CHECKLIST

B.1 Outlook Briefing Elements (more than 6 hours until departure). Check for reported or forecast meteorological or aeronautical conditions that might influence or alter the proposed flight.

- Weather advisories (SIGMET, AIRMET, convective SIGMETs, CWAs, and Aviation Watch Notification Messages)
- Synopsis (type, location, and movement of weather systems and/or air masses)
- En route and destination forecast (alternate if needed)
- NOTAMs (e.g., airport/runway closures, air traffic delays, and TFRs)

B.2 Standard Briefing Elements.

- Adverse conditions (e.g., weather advisories, low-level wind shear, thunderstorms, icing, and frontal zones)
- Synopsis
- Current weather
- En route, destination, and alternate forecasts
- Winds aloft
- NOTAMs, TFRs, and PIREPs
- P40 (Camp David) and P56 (Washington DC); Washington, DC SFRA (if applicable)
- ATC delays

B.3 Abbreviated Briefing Elements (update on changes, up to 2 hours prior to flight).

- Check updates to adverse conditions (reported or forecast) along the route of flight
- Check for any changes in meteorological and aeronautical conditions

B.4 Non-Weather-Related Checklist Items.

- IMSAFE
- PAVE
- Personal minimums
- Fuel requirements
- Alternate airports
- Traffic delays
- Takeoff and landing distance information for airports
- Aircraft performance items (e.g., airport elevation, runway slope and conditions, and Weight and Balance)
- RAIM check

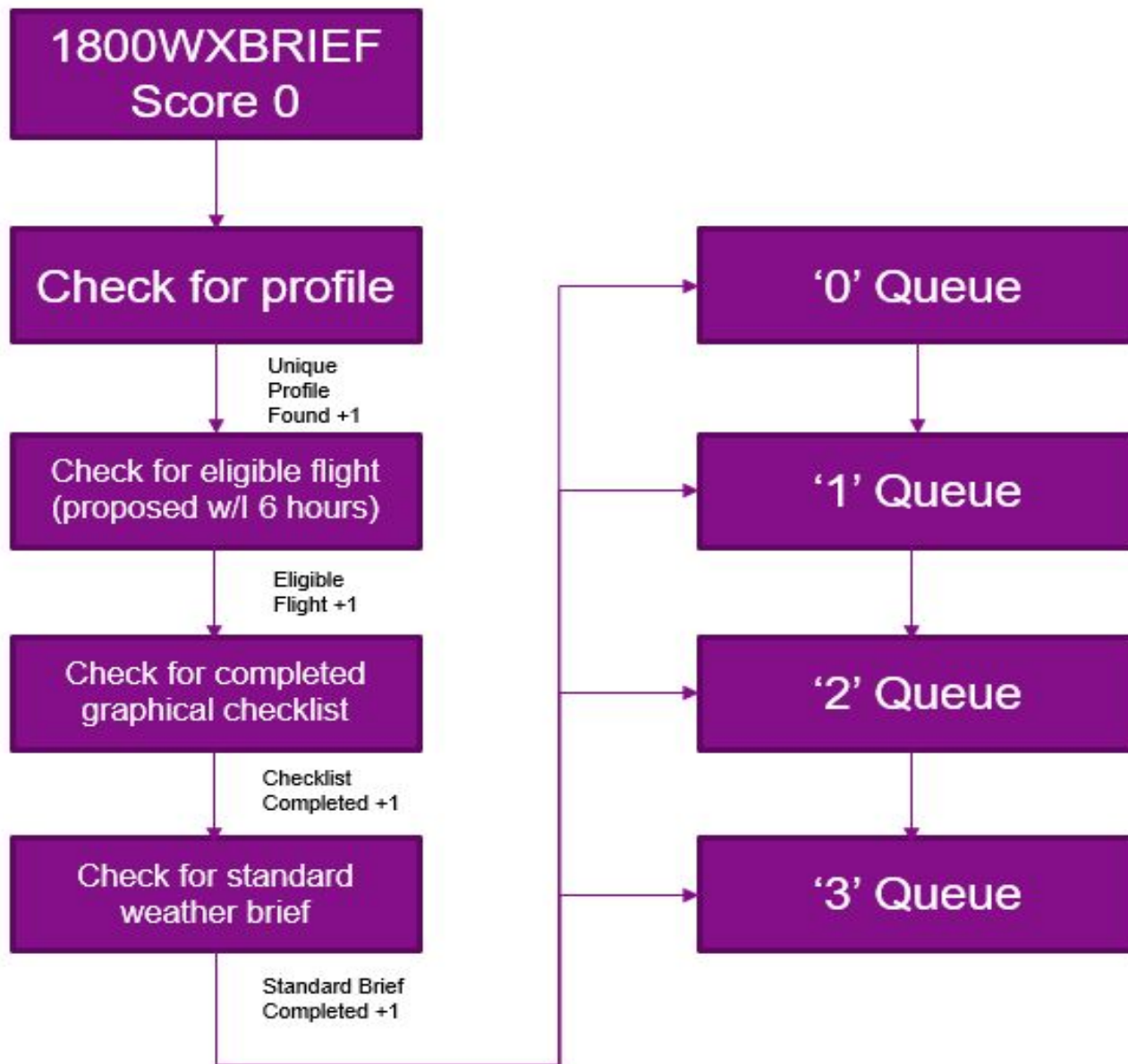
“How do I teach my students to be comfortable with weather?”

- Provide structure**
 - Resources available
 - Self-briefing Checklist
- Demonstrate by doing**
 - Demonstrate a successful briefing & go/no-go process
- Observe & Evaluate**
 - Provide instructional oversight and adjustments where needed during instructor guided briefing(s)
- Take the Training Wheels Off**
 - Encourage your student(s) to start the self-briefing process as soon as practical
 - You are your student’s primary learning resource; encourage questions from day 1!
- Insist on consistency**
 - Just one skipped preflight briefing sends a clear message:
 - “This is ok.”
 - “My flight turned out just fine without a briefing...”
 - “You can check the WX, but we’re still going!”

Priority Service

□ Callers who are not identified or have not performed self service actions will wait longer to speak with a specialist.

□ Those who are identified & have more actions accomplished will receive the highest priority.



SMS/Text Services

The following capabilities are available by messaging them to **358-782 (FLT SVC)**:

- **METARs and TAFs at an airport-** Request current weather and forecast information for any airport.
- **Adverse Condition Updates-** Text "**ACU**" and you will receive a summary of any new conditions detected for your upcoming flight or you will get a positive indication there are no new conditions reported. This service allows you to check if there are any new Adverse Conditions or TFRs since you filed your flight plan. This content is recorded and can be used to provide confirmation that you received the most up-to-date adverse conditions for your flight.
- **Help-** To request information about the text message options text "**Help**" to **358-782 (FLT SVC)**



SMS/Text Services

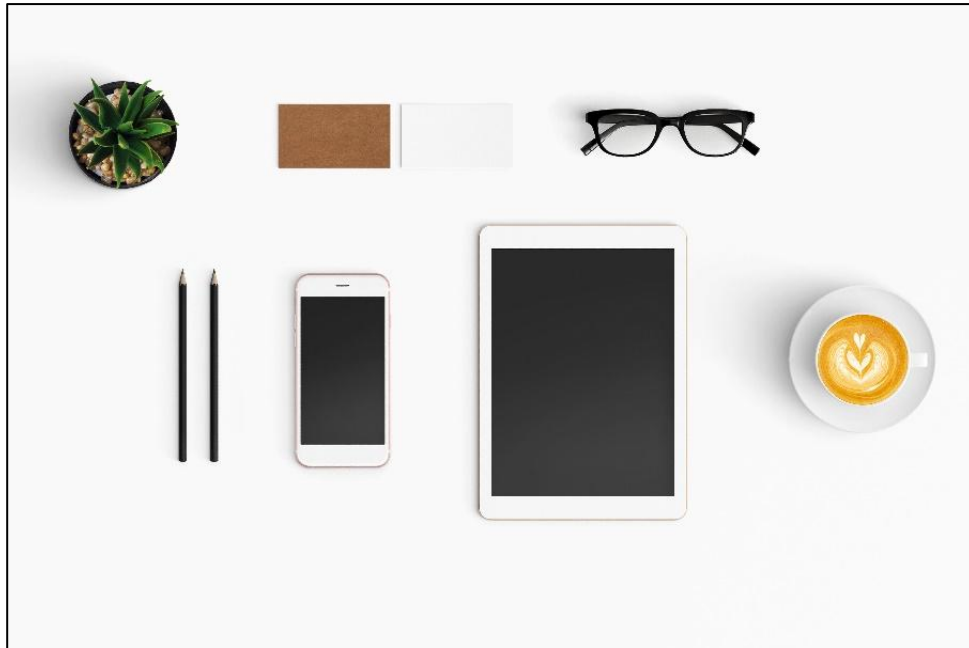
- Text "*METAR FDK*" and you will receive the latest METAR for Frederick Airport.
- Text "*METAR FDK PT*" and you will receive the latest METAR for Frederick Airport in **plain text**.
- Text "*TAF FDK*" and you will receive the latest TAF for Frederick Airport.
- Text "*MT FDK PT*" and you will receive the latest METAR and TAF for Frederick Airport in **plain text**.

Note: the requests are case independent.



Mobile Devices

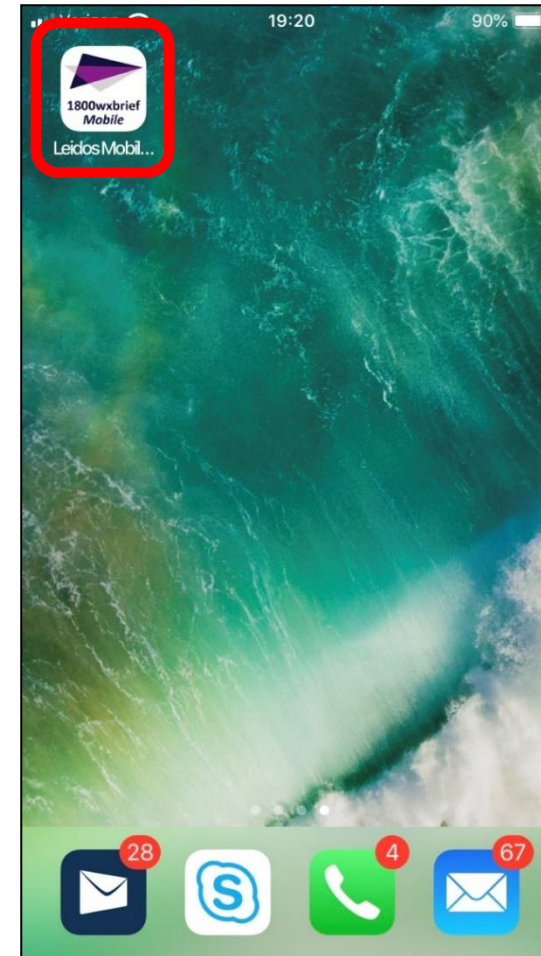
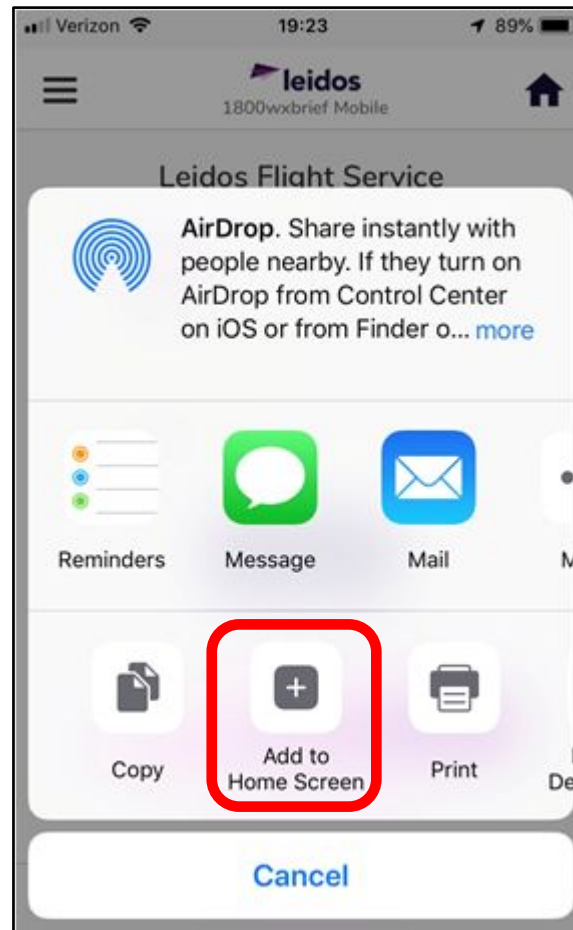
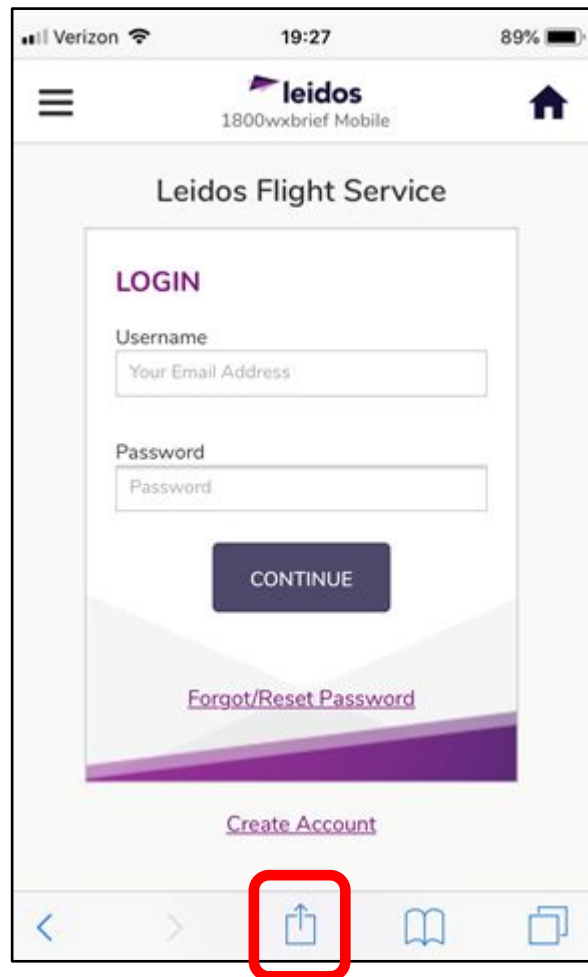
- Use the same desktop/laptop web address
 - www.1800wxbrief.com
 - Auto-redirect to the smart phone, tablet, etc.



- Automatically determines your device screen size and display
- Designed for use on:
 - iPhone
 - iPad
 - Samsung Galaxy
 - LG Nexus
 - Google Pixel
 - Android

Creating a Home Screen Shortcut

Access the Mobile Web using www.1800wxbrief.com



1800wxbrief.com Online Capabilities

- ICAO Flight Planning
- Route/Area Briefings and NavLog
- Interactive Map
- Easy access to TAFs, METARs, and NOTAMs
- Weather Charts – CONUS, Hawaii, Alaska
- Favorite/Recent Flight Plans and Saved Aircraft
- Account and Aircraft Management
- Advanced Services
 - ACAS, EasyActivate[®], EasyClose[®], Close Reminder, SE SAR, Preflight Summaries, ATC Notices, EasyAmend, Alexa & Google Assistant, Priority Services
- Pilot History

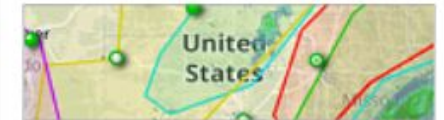


Featured Capabilities

NextGen
Briefing



Interactive
Map



Automated
Voice
Service



SMS Text
Message
Service



Latest Features & Enhancements

Connect with us on Social Media!

Flight Service
Jan 12 · 🌐

Replace manual calculations with the Plan-A-Route tool. Find the most direct routings, airways, and intersections with just a few clicks. This tool maps the bes... See More

**PLAN A ROUTE
A TOOL THAT DOES
THE WORK FOR YOU**

1800WXBRIEF.COM

11 reactions · 2 Comments · 23 Shares

Flight Service
@1800wxbrief

Flight Service [1800wxbrief.com](https://www.1800wxbrief.com) brings safety, efficiency, and innovation to the forefront of general aviation flight planning.

Aviation ⓘ [1800wxbrief.com](https://www.1800wxbrief.com) Joined April 2014

2,663 Following 5,296 Followers

Tweets Tweets & replies Media Likes

Flight Service @1800wxbrief · Feb 13
Flight Service @Leidos Director of Innovation and Outreach Jeff Arnold kicks off the 2023 season at the Buckeye Air Fair (KBXK) and @AOPA #FlyIn. On Feb 17 and 18, learn firsthand how to self-brief and gain confidence in your WX analysis. bit.ly/AOPASeminarSch...

1800wxbrief_com

THE NEW YEAR IS ALMOST HERE

1800WXBRIEF.COM

MAKE OUR FREE WEB APP PART OF YOUR 2022 PLAN!

2022 NEW YEAR'S RESOLUTIONS:
1) use 1800wxbrief.com to plan flights
2) use 1800wxbrief.com for all weather updates
3) create my 1800wxbrief.com account TODAY!!!

22 likes

Facebook: <https://www.facebook.com/1800wxbrief>
Instagram: https://www.instagram.com/1800wxbrief_com
Twitter: <https://www.twitter.com/1800wxbrief>

Useful Online Resources

[VFR WINGS Course – How to Conduct Preflight Self-Briefings for Student and VFR Pilots](#)

[IFR WINGS Course – Conducting Preflight Self-Briefings for IFR Pilots](#)

[AC 91-92 - Pilot's Guide to a Preflight Briefing](#)

[AC 91-92 - Live FAA YouTube Panel](#)

(Great for offering extra credit to students!)

Scan to take a quick
3-minute feedback survey!



Thank you from all of us at
Leidos Flight Service

www.1800wxbrief.com

Jeffery.C.Arnold@leidos.com



Leidos On-Line Live Demonstration

Contact:

Jeff Arnold

jeffery.c.Arnold@leidos.com

Support Slides

Pilot Services

METARs, TAFs, and NOTAMs

leidos 1800wxbrief Mobile

DASHBOARD

MAP WX CHARTS

NEW FLIGHT PLAN FAV/RECENT PLANS

STANDARD BRIEF **METAR-TAF-NOTAM**

CURRENT FLIGHT PLANS

KMCO > KRDU 0221 1126 *Active*

EST

KRDU > KHWY 0221 1600 *Filed*

EST

KHWY > KRDU 0222 1000 *Draft*

EST

© 2019 Leidos

leidos 1800wxbrief Mobile

METAR-TAF-NOTAM Updated At 01:17Z

FAVORITES SEARCH

[Manage Favorite Airports](#)

METAR TAF NOTAM Plain Text

KORL

VFR KORL 150053Z 11008KT 10SM CLR 21/16 A3012 RMK AO2 SLP204 T02110156

No TAFs exist for this location.

KFLL

VFR SPECI KFLL 150110Z 11013KT 10SM FEW022 SCT032 SCT055 24/19 A3010 RMK AO2 T02440189

VFR TAF KFLL 142320Z 1500/1606 09012KT P6SM SCT025 SCT035 BKN060

VFR FM150100 10008KT P6SM FEW025 SCT060

VFR FM151400 12013KT P6SM SCT035 SCT060

VFR FM160100 12008KT P6SM FEW025 SCT060 =

KMLB

VFR KMLB 150053Z 11007KT 10SM CLR 22/17 A3013 RMK AO2 SLP202 T02220167

VFR TAF KMLB 142320Z 1500/1524 13009KT P6SM FEW250

VFR FM150600 13005KT P6SM SCT250

leidos 1800wxbrief Mobile

METAR-TAF-NOTAM Updated At 12:34Z

FAVORITES **SEARCH**

LAL PHK MIA **GO**

METAR TAF NOTAM Plain Text

LAL

MVFR Lakeland Linder International, Lakeland, FL (KLAL). Apr 7, 1150Z. Mist, Wind from 090° at 5 knots, 5 statute miles visibility, Scattered Clouds at 1,000 feet, Temperature 20°C, Dewpoint 19°C, Altimeter is 30.19.

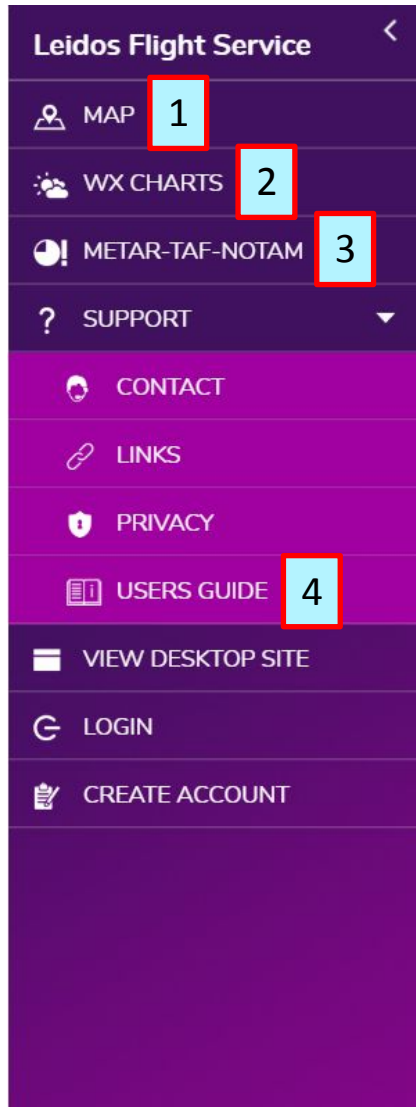
PHK

No METARs exist for this location.

MIA

VFR Miami International, Miami, FL (KMIA). Apr 7, 1153Z, Corrected. Wind from 100° at 8 knots, 10 statute miles visibility, Few clouds at 2,500 feet, Ceiling is Broken at 25,000 feet, Temperature 24°C, Dewpoint 22°C, Altimeter is 30.15. Remarks: automated station with precipitation discriminator sea level pressure 1020.9 hectopascals hourly temp 24.4°C dewpoint 21.7°C 6-hour max temp 24.4°C 6-hour min temp 23.9°C 3-hour atmospheric

Features Accessible without Logging In



1. Interactive Map

- Route Display
- Current/forecast Wx products
- Adverse conditions & Aeronautical information
- Variety of background maps

2. Weather Charts

- Static weather charts

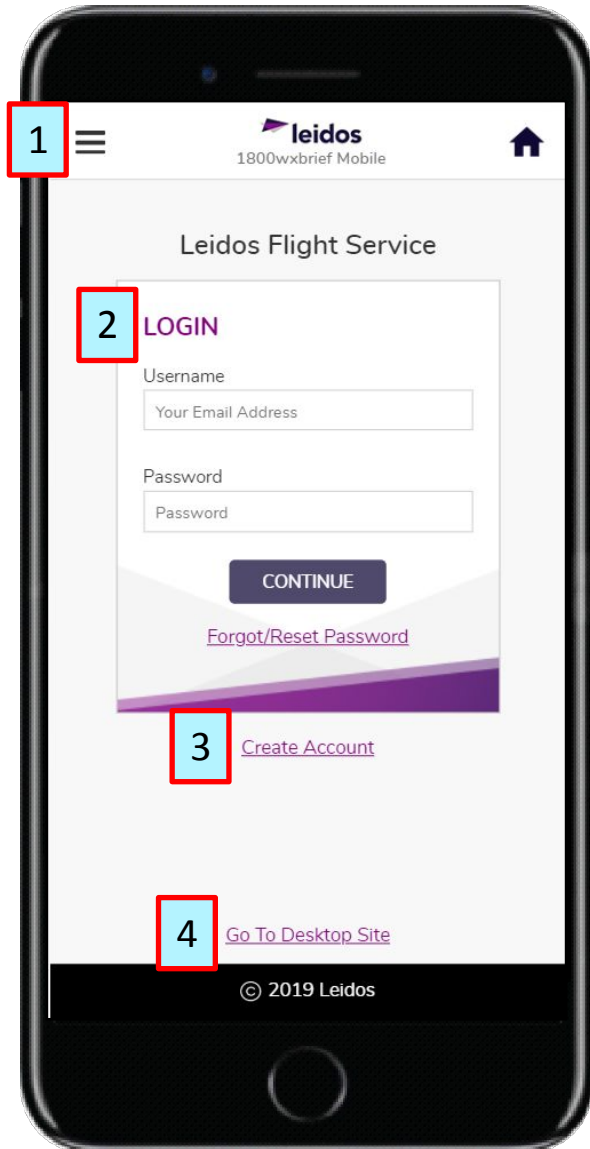
3. METAR-TAF-NOTAM Viewer

- On demand for an airport or several airports
- Display encoded (raw text)
- Display decoded (plain text)

4. Mobile Web Users Guide

- Provides a detailed description of all features

Mobile Web Home Screen



Access the Mobile Web using your existing www.1800wxbrief.com account

1. Navigation Menu
 - Access all features when logged in
2. Login Dialog
 - Use existing 1800wxbrief.com credentials
3. Create New Account
 - For pilots that do not have an existing 1800wxbrief.com account
4. Go To Desktop Site
 - Full desktop capability
 - Access to domestic flight plan form

Weather

leidos
1800wxbrief Mobile

DASHBOARD

1 MAP 2 WX CHARTS

NEW FLIGHT PLAN FAV/RECENT PLANS

STANDARD BRIEF METAR-TAF-NOTAM

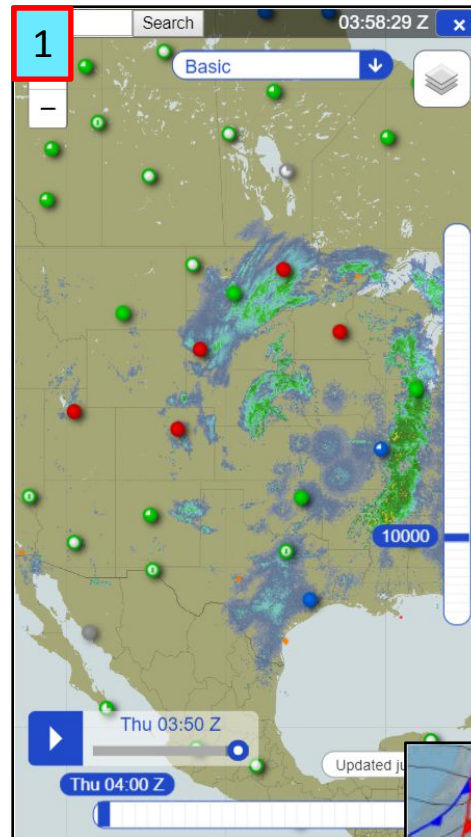
CURRENT FLIGHT PLANS

KMCO > KRDU 0221 1126 EST *Active* ⚠

KRDU > KHWY 0221 1600 EST *Filed* ⚠

KHWY > KRDU 0222 1000 EST *Draft*

© 2019 Leidos



leidos
1800wxbrief Mobile

WEATHER CHARTS

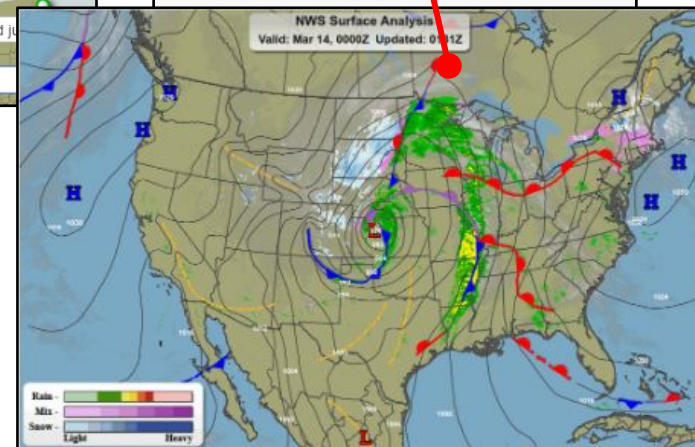
Region
CONUS

Current Weather
[Surface Analysis](#) [Weather Depiction](#)

Surface Progs
[12 Hr](#) [24 Hr](#) [36 Hr](#) [48 Hr](#)

Millibar Charts
[FL050/850MB](#) [FL100/700MB](#)
[FL180/500MB](#) [FL300/300MB](#)
[FL340/250MB](#) [FL390/200MB](#)

Lo-Level Sig Progs
[12 Hr](#) [24 Hr](#)



New, Favorite, and Recent Flight Plans

leidos
1800wxbrief Mobile

DASHBOARD

MAP WX CHARTS

1 NEW FLIGHT PLAN 2 FAV/RECENT PLANS

STANDARD BRIEF METAR-TAF-NOTAM

CURRENT FLIGHT PLANS

KAOO > KMIA 0321 2030 EDT *Active* 3

KMIA > KAOO 0320 1200 EDT *Filed*

KCLT > KBCB 0321 EDT *Draft*

Indicates Adverse Conditions are present

© 2019 Leidos

leidos
1800wxbrief Mobile

1

FLIGHT PLAN *Draft*

MAP STD BRIEF NAVLOG

FILE DELETE

RETURN FP NEXT LEG SAVE AS FAV

Aircraft ID Flight Rule
N12345 VFR

Flight Type No. of Aircraft
G 1

Aircraft Type Wake Turbulence
P28R L

Aircraft Equipment Surveillance Equipment
S C

Departure Departure Date
KORL 03/14/2019

Departure Time Departure Time Zone
16:15 EDT

Leidos Proprietary

leidos
1800wxbrief Mobile

2

FAVORITES (8) RECENT (2)

Select row to FILE or BRIEF

KBCB-KCLT

MYAB TO MYAN

CWB TO CYU

KBCB TO KCLT

KAOO

KORL TO KFL

Touch to File/Brief Favorite FP

Touch to Edit Favorite FP

ADVERSE CONDITIONS
KAOO > KMIA 0320 1200 EDT

ALERT 1 OF 2
WAUS42 KKCI 200154 AAB MIAT WA 200154 AMD
AIRMET TANGO UPDT 6 FOR TURB AND STG SFC
WINDS VALID UNTIL 200300 . AIRMET TURB...FL AND
CSTL WTRS FROM 220ENE TRV TO 180E PBI TO
70ENE PBI TO 150SE MIA TO 80WSW EYW TO
90WSW PIE TO SRQ TO 220ENE TRV MOD TURB BTN

ACKNOWLEDGE

1 OF 2

leidos

Standard Briefings

leidos
1800wxbrief Mobile

DASHBOARD

MAP | WX CHARTS
NEW FLIGHT PLAN | FAV/RECENT PLANS
STANDARD BRIEF | METAR-TAF-NOTAM

CURRENT FLIGHT PLANS

KMCO > KRDU 0221 1126 EST	Active	!
KRDU > KHWY 0221 1600 EST	Filed	!
KHWY > KRDU 0222 1000 EST	Draft	

© 2019 Leidos

BRIEF
N12345 KORL > KMIA 14 22:00 EDT

KORL (Departure) Closest Terminal Weather

Plain Text

KORL (Departure) Closest Terminal Weather

METAR KORL 150053Z 11008KT 10SM CLR 21/16 A3012 RMK AO2 SLP204 T02110156

METAR KORL 142353Z 11009KT 10SM CLR 23/15 A3012 RMK AO2 SLP201 T02280150 10289 20228 53008

METAR KORL 142253Z 12012KT 10SM CLR 25/15 A3010 RMK AO2 SLP195 T02500150

TAF for KORL is not available. For additional forecast information, please refer to other forecast sections in this briefing

KORL (Departure) NOTAMs

All published NOTAMs are available in the Notices to Airmen Publication (NTAP).

==== Obstruction NOTAMs ====

IORL 02/025 KORL OBST CRANE (ASN 2017-ASO-25781-OE) 283219.42N0812251.97W (2.58NM W OF ORL) 501FT (302FT AGL) CTD FL ACFT 1802161200 1800002100

CLOSE

BRIEF
N12345 KORL > KMIA 14 22:00 EDT

KORL (Departure) Closest Terminal Weather

Plain Text

KORL (Departure) Closest Terminal Weather

METAR KORL 150053Z Executive, Orlando, FL (KORL). Mar 15, 0053Z. Wind from 110° at 8 knots, 10 statute miles visibility, Clear Skies, Temperature 21°C, Dewpoint 16°C, Altimeter is 30.12. Remarks: automated station with precipitation discriminator sea level pressure 1020.4 hectopascals hourly temp 21.1°C dewpoint 15.6°C

METAR KORL 142353Z Executive, Orlando, FL (KORL). Mar 14, 2353Z. Wind from 110° at 9 knots, 10 statute miles visibility, Clear Skies, Temperature 23°C, Dewpoint 15°C, Altimeter is 30.12. Remarks: automated station with precipitation discriminator sea level pressure 1020.1 hectopascals hourly temp 22.8°C dewpoint 15.0°C 6-hour max temp 28.9°C 6-hour min temp 22.8°C 3-hour atmospheric pressure decreasing or steady, then increasing; or increasing then increasing more rapidly by 0.8 hectopascals

METAR KORL 142253Z Executive, Orlando, FL (KORL). Mar 14, 2253Z. Wind from 120° at 12 knots, 10 statute miles visibility, Clear Skies, Temperature 25°C, Dewpoint 15°C, Altimeter is 30.10. Remarks: automated station with precipitation discriminator sea level pressure 1019.5 hectopascals hourly temp 25.0°C dewpoint 15.0°C

CLOSE

EasyActivate™ and EasyClose™

- **A**
li
You may activate
1. Select the
2. In the code
[EasyActivate](#)
WARNINGS:
1. A confirmation
flight plan
flight plan
2. Do not use
Thank you for using
Leidos Flight Service
- **A**
li
You may close
1. Select the
2. In the code
[EasyClose](#)
Reminder, Leidos
WARNINGS:
1. Do not
Search a
2. A confirmation
flight plan
plan and
3. Do not use
Thank you for using
Leidos Flight Service (800-WX-BRIEF)

Verizon 21:10 84%
(240) 883-5487 >
Text Message Today 21:10
Leidos Flight Service (1-800-WX-BRIEF or on the web at 1800wxbrief.com). System will respond to each user command.
Reply "1" to enter the activate/cancel menu for TTTJD01 scheduled to depart BCB at 0140Z.

Verizon 21:15 84%
(240) 883-5487 >
Text Message Today 21:15
Reply "1" to close TTTJD01 scheduled to arrive from KBCB at 0145Z.

Interactive Map and NavLog

leidos
1800wxbrief Mobile

FLIGHT PLAN *Draft*

1 MAP **2** STD BRIEF NAVLOG

FILE DELETE

RETURN FP NEXT LEG SAVE AS FAV

Aircraft ID: N12345 Flight Rule: VFR

Flight Type: G No. of Aircraft: 1

Aircraft Type: P28R Wake Turbulence: L

Aircraft Equipment: S Surveillance Equipment: C

Departure: KORL Departure Date: 03/14/2019

Departure Time: 16:15 Departure Time Zone: EDT

Search 01:48:55 Z

Basic

10000

Fri 01:40 Z

Fri 02:00 Z

Updated just now.

NAVLOG
KORL > KMIA

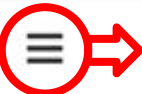
Aircraft	Est Date/Time	Departure
N12345	03/14/2019 22:00EDT	KORL
Destination	Route	Altitude
KMIA	PHK	9500 ft
Distance	Time	Fuel
174 nm	01:11:05	

COLLAPSE LEG DETAILS

KORL 28°32.7' / -81°20.0'		
Wind: 109/008 Temp: 019		
MH 164 MC 169	Leg 111 nm Rem 63 nm	ETE 046 min GS 144 kt
PHK 26°47.0' / -80°41.5'		
Wind: 034/002 Temp: 010		
MH 166 MC 167	Leg 63 nm Rem 0 nm	ETE 025 min GS 151 kt
KMIA 25°47.7' / -80°17.4'		
Wind: 098/017 Temp: 025		

CLOSE

Pilot History

 Joe Pilot
joe.pilot@internet.com

- DASHBOARD
- NEW FLIGHT PLAN
- STANDARD BRIEF
- MAP
- WX CHARTS
- METAR-TAF-NOTAM
- ACCOUNT
- UPDATE AIRCRAFT
- UPDATE ACCOUNT
- PILOT HISTORY**
- SUPPORT
- VIEW DESKTOP SITE
- LOGOUT

leidos 1800wxbrief Mobile	
Mar 15, 0112Z	N12345 KORL > KMIA
Route Standard Briefing	
Mar 15, 0110Z	N12345 KORL > KMIA
Route Standard Briefing	
Mar 12, 1734Z	TTTJD01 BCB > ROA
Route Standard Briefing	
Mar 12, 0150Z	N12345 KAOO > KMCN
Route Standard Briefing	
Mar 11, 0023Z	N12345 KMCO > KRDU
Route Standard Briefing	
Mar 11, 0020Z	TTTJD01 KMCO > KRDU
Route Standard Briefing	
Mar 8, 1637Z	TTTJD01 W42 > MCN
Route Standard Briefing	
Mar 8, 1629Z	DEMO11 KAOO > KMCN
Cancel Flight Plan	
Mar 8, 1628Z	DEMO11 KAOO > KMCN
File Flight Plan VIEW DETAILS	
Mar 8, 1614Z	DEMO11 KAOO > KMCN
File Flight Plan VIEW DETAILS	
Mar 6, 0332Z	DEMO11 KAOO > KMCN
Cancel Flight Plan	

MAR 8, 1628Z
DEMO11 KAOO > KMCN

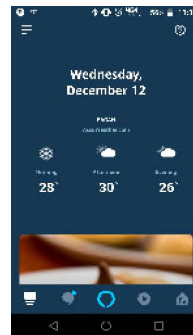
Aircraft ID	Event Time	
DEMO11	Mar 8, 1628Z	
Flight Plan Type	Flight Rules	Flight Type
ICAO	V	
Number of Aircraft	Aircraft Type	
1	P28R	
Wake Turbulence Category		
L		
Aircraft Equipment	Surveillance Equipment	
SDGR	SB1	
Departure Aerodrome	Proposed Departure Time	
KAOO	Mar 8, 2000Z	
Cruising Speed	Level	
N0160	A095	
Estimated Time of Arrival	Route of Flight	
Mar 9, 0130Z	EKN V37 PSK CLT S19	
Destination Aerodrome		
KMCN		
Estimated Elapsed Time (HHMM)		
0530		
Alternate Aerodrome 1	Alternate Aerodrome 2	
KEZM	KOPN	

Devices and Apps

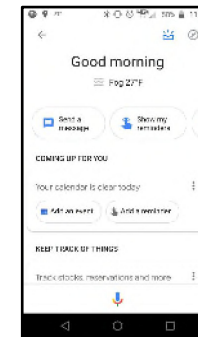
- Smart speaker device
- Alexa or Google Assistant App
- iPhone or Android



Amazon Echo Alexa App



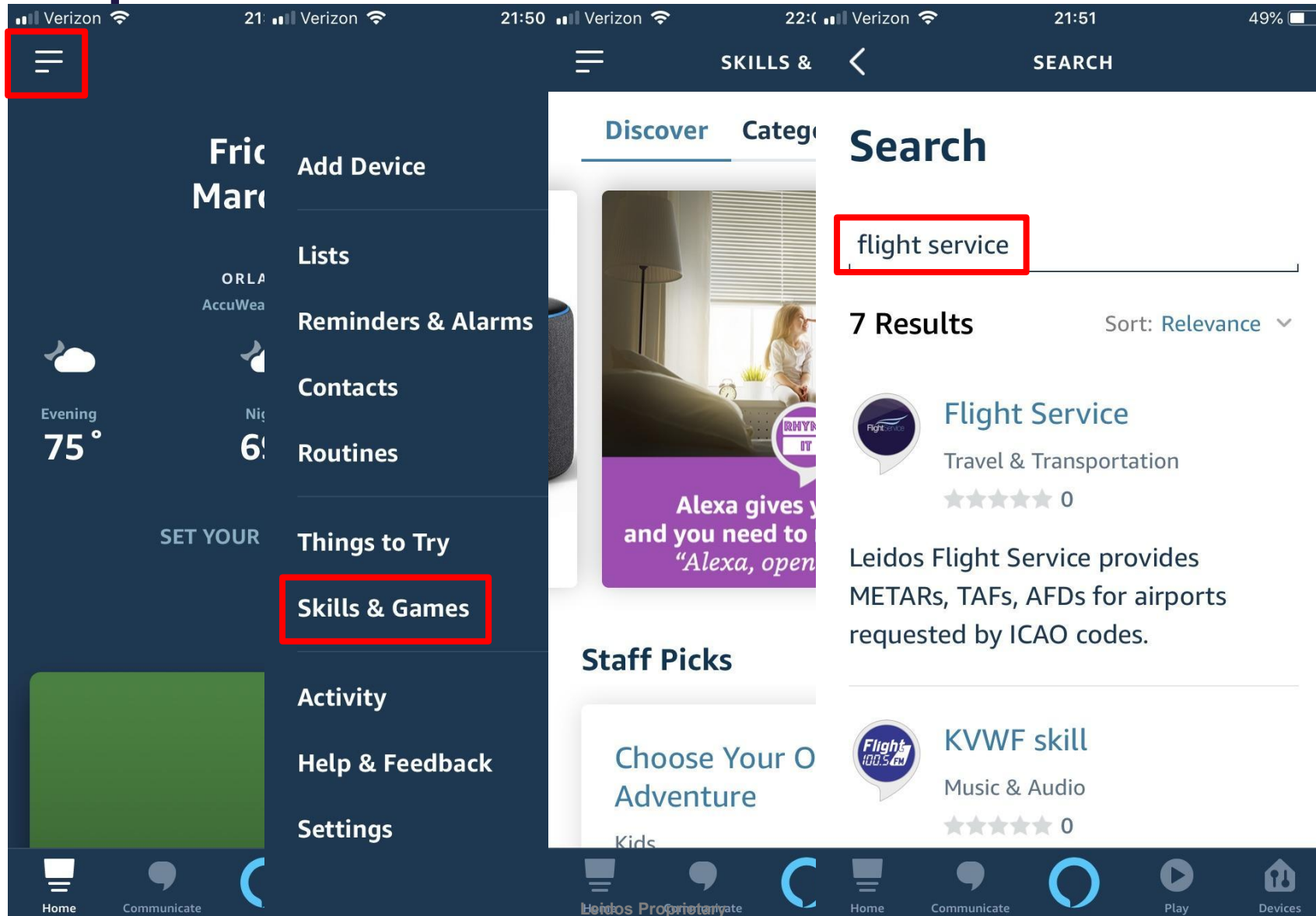
Google Home Google Assistant App



Voice Commands

- METAR
 - Give me the METAR for Hotel Echo Foxtrot
- TAF
 - What is the TAF for Hotel Echo Foxtrot
- Adverse Conditions Update
 - Give me my Adverse Conditions Update
 - I need an Adverse Conditions Update
- Aviation Forecast Discussion
 - I would like an aviation forecast discussion for Hotel Echo Foxtrot
- Help
 - What services do you provide
 - How do I get started
 - How do I use flight service on Alexa

Setup for Alexa on iPhone



Setup for Alexa on iPhone

The image displays four overlapping screenshots of an iPhone app interface for 'Flight Service'. The top screenshot shows the app's navigation bar with a back arrow, a 'Done' button, a lock icon, and the time '21:54'. The second screenshot shows the skill details page for 'Flight Service' by Leidos, with a 'Done' button, a lock icon, and a rating of 0 stars. The third screenshot shows a login form with fields for 'Username' (containing 'Your Email') and 'Password'. The fourth screenshot shows the bottom dock with icons for 'Home', 'Communication', 'Leidos Proprietary', 'Play', and 'Devices'. Red boxes highlight the 'ENROLL' button, the 'Adverse' link, the 'LOGIN' section, the 'Leidos Proprietary' icon, and the 'Settings' button.