



# Southeast Michigan Climate Summary

Monthly Temperature, Precipitation, Snowfall, and Severe Weather Summaries

Michigan, Average Temperature, September  
1901-2000  
Avg. 58.5°F



# October 2017

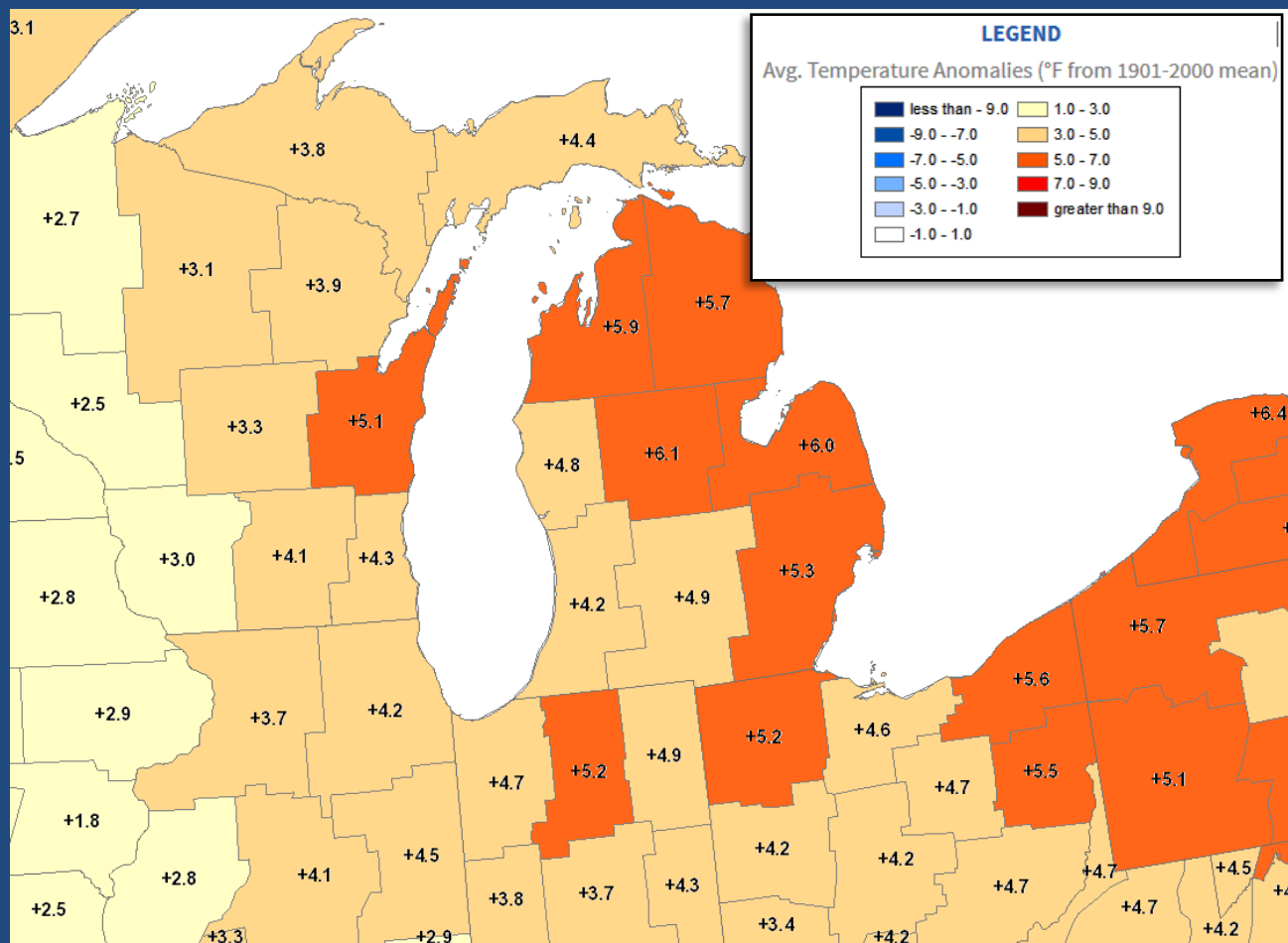




# Southeast Michigan Climate Summary

Temperature Anomalies by NCEI Climate Division (page 1 of 2)

Location	Type	Average Temperature
ADRIAN	COOP	56.1
ADRIAN LENAWEЕ CO AP	WBAN	55.2
ALGONAC WWTP	COOP	57.1
ANN ARBOR MUNI AP	WBAN	53.6
ANN ARBOR SE	COOP	54.7
ANN ARBOR U OF MI	COOP	55.8
BAD AXE	COOP	55.1
BURTON 4N	COOP	54.4
CARO	COOP	54.3
CASS CITY 1 SSW	COOP	52.9
CHELSEA	COOP	55.4
CORUNNA 2 NE	COOP	55.8
DEARBORN	COOP	57.2
DEARBORN #2	COOP	58.0
DETROIT CITY AP	WBAN	56.9
DETROIT METRO AP	WBAN	57.3
DETROIT WILLOW RUN AP	WBAN	57.9
DUNDEE	COOP	55.9
DURAND WWTP	COOP	54.7
FARMINGTON	COOP	54.3
FLINT 7 W	COOP	54.8
FLINT BISHOP INTL AP	WBAN	54.6
GOODRICH	COOP	55.0
GROSSE POINTE FARMS	COOP	57.0
HARBOR BEACH 1 SSE	COOP	54.8
LAPEER 2 W	COOP	55.9
LAPEER WWTP	COOP	54.3
LEXINGTON WTP	COOP	55.7
MANCHESTER	COOP	55.6
MIDLAND	COOP	55.6
MILAN WWTP	COOP	56.1
MILFORD GM PROVING GROUND	COOP	54.6

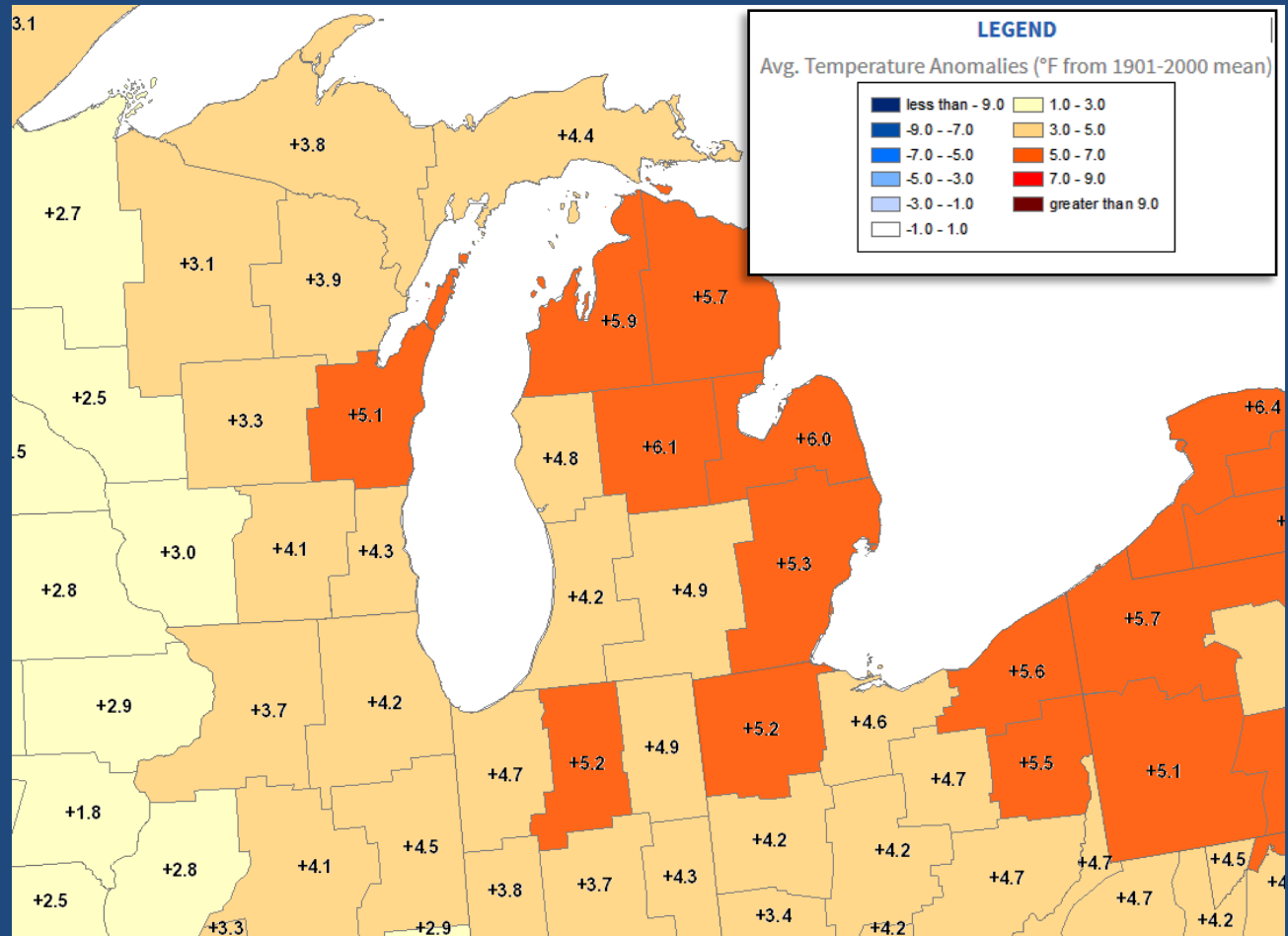




# Southeast Michigan Climate Summary

Temperature Anomalies by NCEI Climate Division (page 2 of 2)

Location	Type	Average Temperature
MORENCI	COOP	54.2
MT CLEMENS 2 WNW	COOP	56.4
NEWPORT 4SSE	COOP	56.7
OIL CITY 2S	COOP	50.9
OWOSSO WWTP	COOP	56.1
PONTIAC OAKLAND CO INTL AP	WBAN	55.0
PONTIAC WWTP	COOP	56.5
PORT HOPE	WBAN	56.7
PORT HURON	COOP	58.0
RICHMOND 4 NNW	COOP	55.6
SAGINAW #3	COOP	55.9
SAGINAW MBS INTL AP	WBAN	55.9
SALINE 4 SW	COOP	56.1
TECUMSEH	COOP	54.5
VASSAR	COOP	54.0
WHITMORE LAKE 1NW	COOP	54.0
YALE	COOP	54.1

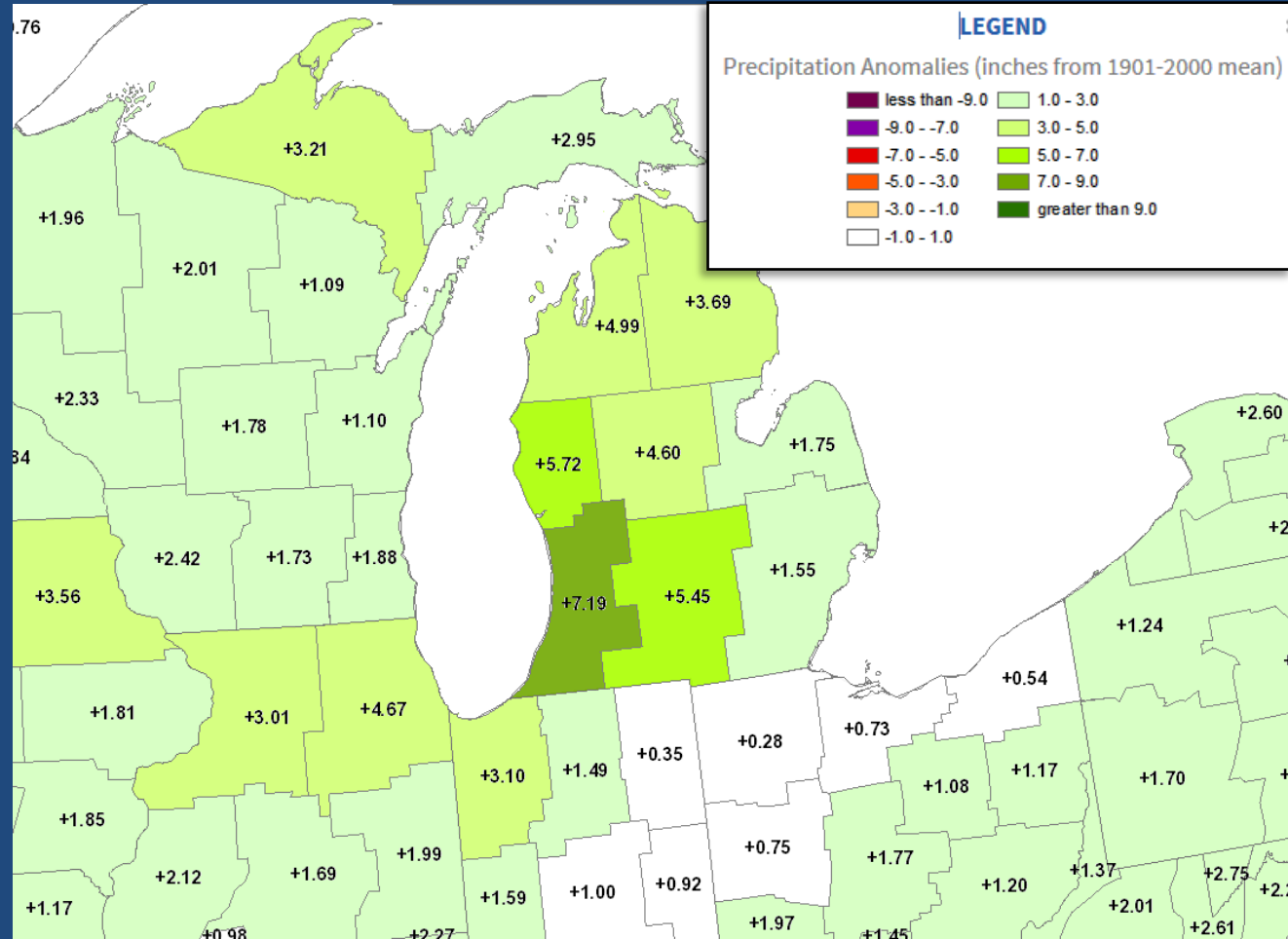




# Southeast Michigan Climate Summary

Precipitation Anomalies by NCEI Climate Division (page 1 of 3)

Location	Type	Precipitation
ADRIAN 5.2 NE	CoCoRaHS	2.83
ADRIAN LENAWEE CO AP	WBAN	0.84
ALGONAC WWTP	COOP	2.75
ANN ARBOR 2.1 WNW	CoCoRaHS	4.65
ANN ARBOR 3.0 SE	CoCoRaHS	4.65
ANN ARBOR MUNI AP	WBAN	4.06
ANN ARBOR SE	COOP	4.71
ANN ARBOR U OF MI	COOP	5.19
BAD AXE	COOP	3.49
BAY CITY 2.2 WNW	CoCoRaHS	5.15
BAY CITY 5.3 N	CoCoRaHS	4.84
BLOOMFIELD TOWNSHIP 3.1 SW	CoCoRaHS	5.81
BRIGHTON 2.5 E	CoCoRaHS	6.50
BURTON 4N	COOP	4.48
CANTON 0.7 NW	CoCoRaHS	4.19
CARLETON 2.5 S	CoCoRaHS	2.34
CARO	COOP	3.38
CASS CITY 1 SSW	COOP	3.11
CHELSEA	COOP	5.80
CHESANING	COOP	5.85
CORUNNA 2 NE	COOP	4.87
DEARBORN	COOP	3.16
DEARBORN HEIGHTS 1.8 NW	CoCoRaHS	3.20
DETROIT CITY AP	WBAN	1.96
DETROIT METRO AP	WBAN	2.84
DETROIT WILLOW RUN AP	WBAN	2.37
DEXTER 0.9 NW	CoCoRaHS	6.32
DEXTER 2.2 SE	CoCoRaHS	5.13
DUNDEE	COOP	2.45
DURAND 6.2 WNW	CoCoRaHS	6.82
DURAND WWTP	COOP	5.89
FAIRGROVE 3.1 NW	CoCoRaHS	4.13

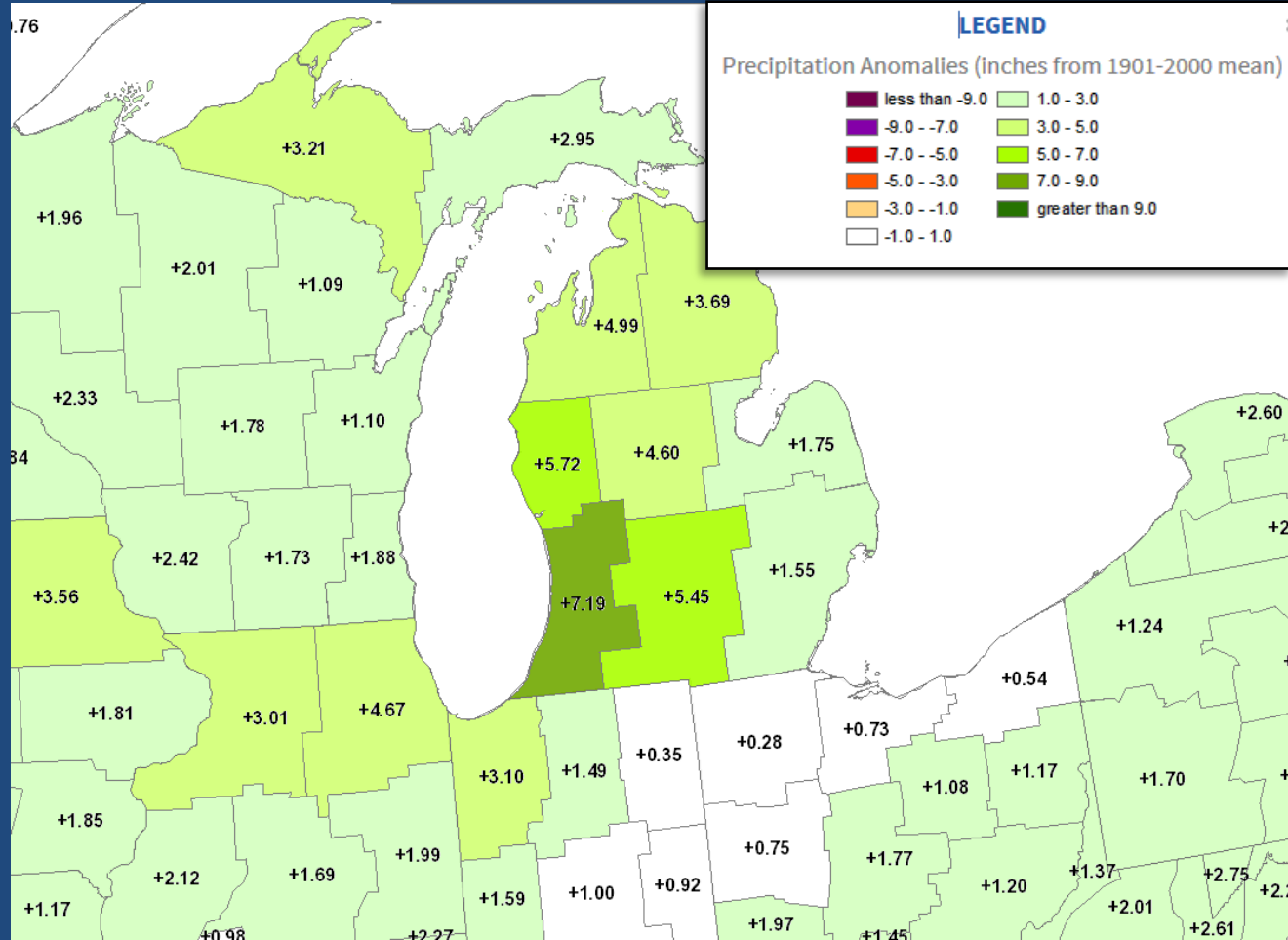




# Southeast Michigan Climate Summary

Precipitation Anomalies by NCEI Climate Division (page 2 of 3)

Location	Type	Precipitation
FARMINGTON	COOP	4.67
FARMINGTON HILLS 1.4 N	CoCoRaHS	5.54
FENTON 2.7 SSE	CoCoRaHS	5.24
FENTON 5.6 WSW	CoCoRaHS	6.05
FILION 5 NNW	COOP	3.50
FLINT 7 W	COOP	5.09
FLINT BISHOP INTL AP	WBAN	4.69
GOODRICH	COOP	3.85
GROSSE POINTE FARMS	COOP	2.83
HARBOR BEACH 1 SSE	COOP	2.61
LAKE ORION 4.3 SSE	CoCoRaHS	4.86
LAPEER 2 W	COOP	4.33
LAPEER WWTP	COOP	4.02
LEXINGTON WTP	COOP	3.72
LINDEN WWTP	COOP	5.15
LIVONIA 2.0 NE	CoCoRaHS	3.93
MANCHESTER	COOP	3.88
MIDLAND	COOP	6.92
MIDLAND 1.8 ENE	CoCoRaHS	5.92
MILAN WWTP	COOP	2.67
MILFORD GM PROVING GROUND	COOP	6.04
MILLINGTON 3 SE	COOP	3.88
MT CLEMENS 2 WNW	COOP	4.90
NEW BALTIMORE 0.4 SSE	CoCoRaHS	4.43
NEWPORT 4SSE	COOP	2.55
NORTHVILLE 3.2 ENE	CoCoRaHS	4.89
OWOSSO WWTP	COOP	6.59
PLYMOUTH 5.4 W	CoCoRaHS	5.31
PLYMOUTH 6.3 W	CoCoRaHS	4.91
PONTIAC OAKLAND CO INTL AP	WBAN	4.56
PONTIAC WWTP	COOP	5.56
PORT HOPE	WBAN	2.85

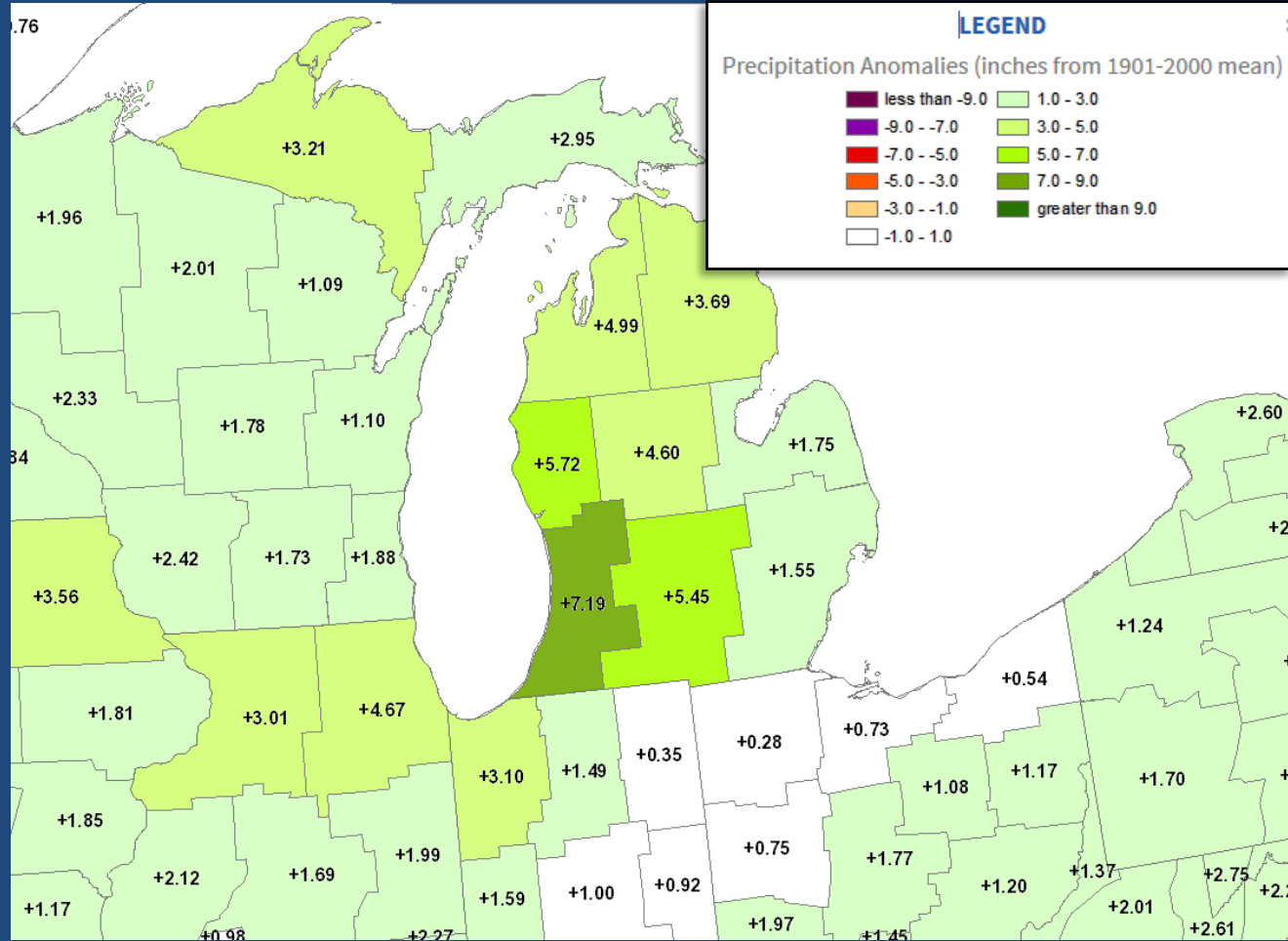




# Southeast Michigan Climate Summary

Precipitation Anomalies by NCEI Climate Division (page 3 of 3)

Location	Type	Precipitation
PORT HURON	COOP	2.16
PORT HURON 1.6 W	CoCoRaHS	1.39
RICHMOND 4 NNW	COOP	0.75
ROSEVILLE 1.7 ENE	CoCoRaHS	1.22
SAGINAW 5W	COOP	0.53
SAGINAW #3	COOP	0.62
SAGINAW MBS INTLAP	WBAN	0.44
SALINE 3.8 SSW	CoCoRaHS	0.38
SALINE 4 SW	COOP	0.44
SHELBY 0.4 SSE	CoCoRaHS	1.40
SOUTHFIELD 2.8 NNE	CoCoRaHS	1.10
STERLING HEIGHTS 1.8 W	CoCoRaHS	1.33
TROY 1.8 S	CoCoRaHS	1.18
UTICA 2.9 E	CoCoRaHS	1.02
W BLOOMFIELD	COOP	1.13
WHITMORE LAKE 1NW	COOP	1.00
WYANDOTTE	COOP	0.98

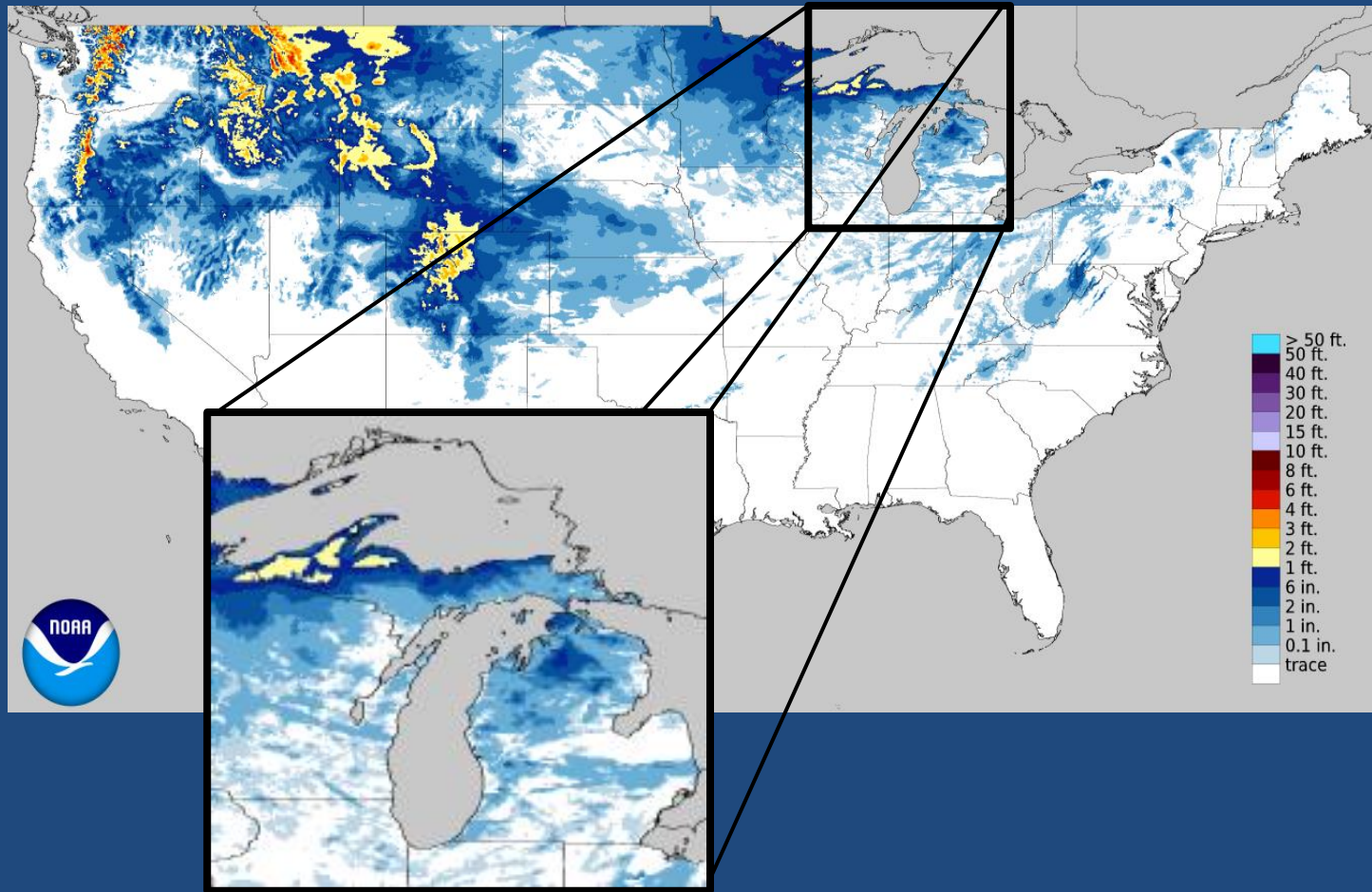




# Southeast Michigan Climate Summary

NOHRSC Season Snow Accumulation as of October 31, 2017

Location	Type	Snowfall
ANN ARBOR 3.1 SE	CoCoRaHS	T
ANN ARBOR SE	COOP	0.2
ANN ARBOR U OF MI	COOP	0.2
CHELSEA	COOP	T
DETROIT METRO AP	WBAN	T
DURAND 6.2 WNW	CoCoRaHS	0.3
DURAND WWTP	COOP	0.1
FARMINGTON	COOP	T
FARMINGTON HILLS 1.4 N	CoCoRaHS	T
FLINT 7 W	COOP	0.1
FLINT BISHOP INTL AP	WBAN	0.1
GOODRICH	COOP	T
GRAND BLANC 2.9 SE	CoCoRaHS	0.4
LAPEER 2 W	COOP	T
MILLINGTON 3 SE	COOP	T
MORENCI	COOP	T
MT CLEMENS 2 WNW	COOP	T
OIL CITY 2S	COOP	T
OWOSSO WWTP	COOP	T
PORT HURON	COOP	T
SAGINAW MBS INTL AP	WBAN	T
W BLOOMFIELD	COOP	T
WYANDOTTE	COOP	T
YALE	COOP	T





# Southeast Michigan Climate Summary

Significant Weather – click image for web story



Severe T-storms, Oct 7





# Southeast Michigan Climate Summary

## Additional Climate Information

Observed Weather | Climate Locations | Climate Prediction

### Observed

**1. Product »**

- Daily Climate Report (CLI)
- Preliminary Monthly Climate Data (CF6)
- Record Event Report (RER)
- Monthly Weather Summary (CLM)
- Regional Summary (RTP)
- State Summary (Temp/Precip)

**2. Location »**

- Detroit
- Flint
- Saginaw

Southeast Michigan Climate

<http://w2.weather.gov/climate/index.php?wfo=dtx>

NOAA NATIONAL CENTERS FOR ENVIRONMENTAL INFORMATION

Home | Climate Information | Data Access | Customer Support | Contact | About

### Climate at a Glance

Climate Monitoring | State of the Climate | Temp, Precip, and Drought | Climate at a Glance | Databases | Social Impacts | Snow and Ice | Teleconnections | GHCN Monthly | Monitoring References

Time Series | Mapping | Data Information | Background

U.S. | Globe

Choose from the options below and click "Plot" to create a time series graph.

Parameters: Average Temperature | Options

Time Scale: 1-Month | # Display Base Period

Month: September | Start: 1991 | End: 2009

Start Year: 1895 | # per Decade: 0 per Century

End Year: 2016 | Start: 1895 | End: 2016

State/Region: Michigan | # Smoothed Time Series

Climate Division/City: Statewide | # Seasonal Filter: LOCKS

Plot

NCEI Climate at a Glance

<http://www.ncdc.noaa.gov/cag/>

NOAA NATIONAL CENTERS FOR ENVIRONMENTAL INFORMATION

Home | Contact Us | About NCEI | Help

CEI > Storm Events Database (Select State)

### Storm Events Database

Data available from 01/1950 to 06/2016

Data Access

- Search
- Bulk Data Download (CSV)
- Storm Data Publication

Documentation

- Database Details
- Version History
- Storm Data FAQ
- NOAA's NWS Documentation
- Tornado EF Scale

External Resources

- NOAA's SPC Reports
- NOAA's SPC WCM Page
- NOAA's NWS Damage Assessment Toolkit
- ESRUFEMA Civil Air Patrol Images
- SHELDUS
- USDA Cause of Loss Data

State/Area: Michigan

Begin Date: 06 / 01 / 2015

End Date: 06 / 30 / 2016

County:

- Alcona
- Alger
- Allegan
- Alpena
- Antrim
- Arenac
- Baraga
- Berry
- Bay

Storm Event Database

<http://www.ncdc.noaa.gov/stormevents/>



NWS Detroit/Pontiac, MI

<http://www.weather.gov/dtx>