



# Austin/San Antonio Weather Forecast Office WEATHER EVENT SUMMARY

## 2015 Memorial Day Weekend Tornadoes

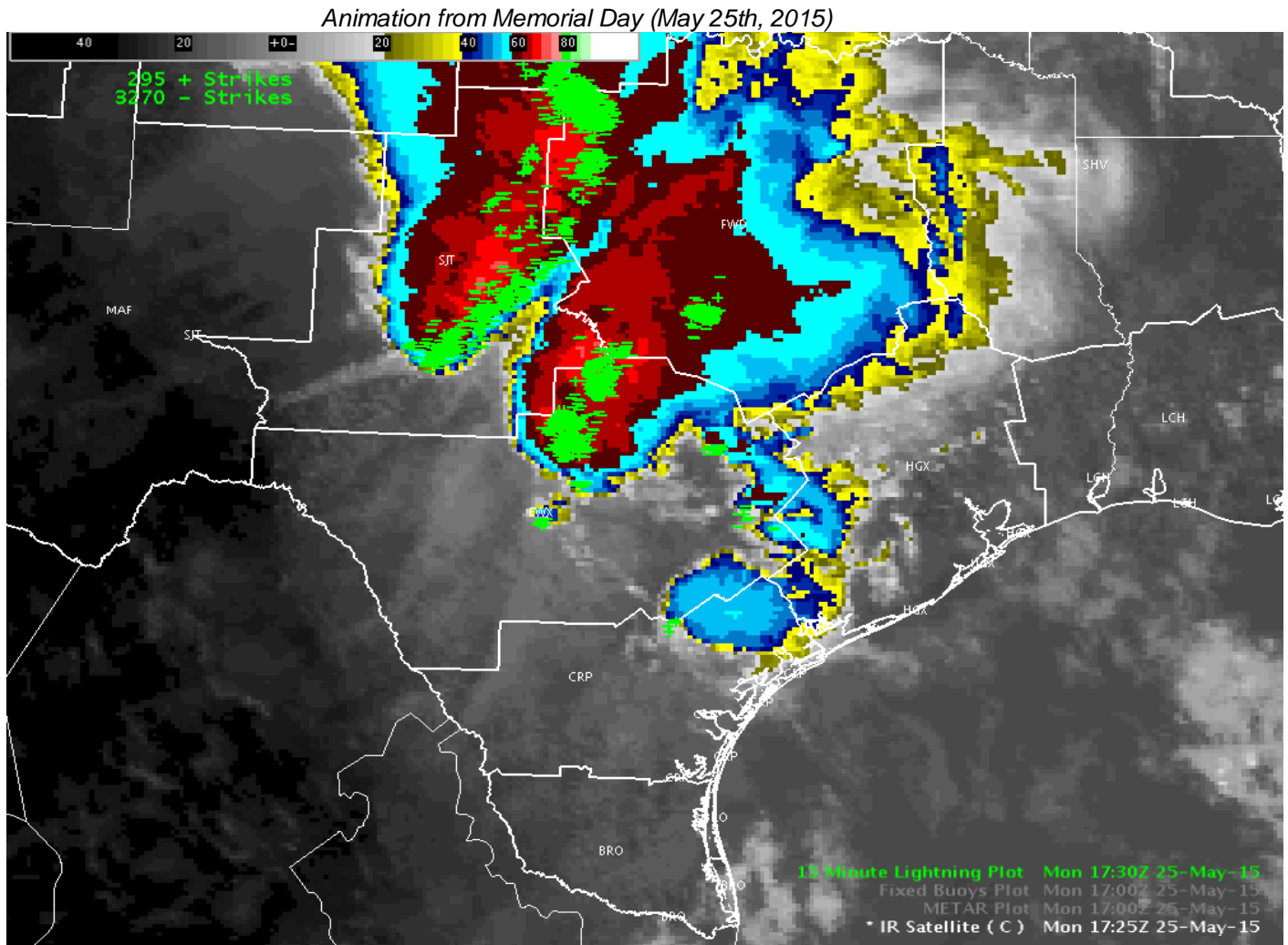
23 – 25 May 2015



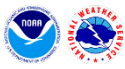
A multi-day episode of storms producing catastrophic Flash Flooding as well as many weak tornadoes affected South Central Texas beginning Saturday May 23<sup>rd</sup>, occurring again on Monday May 25<sup>th</sup> (Memorial Day) and yet again on Wednesday May 27<sup>th</sup>.

# Memorial Day Weekend Tornadoes

23 – 25 MAY 2015



\*Lightning data provided by EarthNetworks and Vaisala



## EVENT SUMMARY

<b>Tornado Statistics for May 23, 2015</b>							
#	Counties	Rating	Time (CST)	Length (miles)	Width	Fatalities	Injuries
1	Travis (Austin - Braker Lane)	EF1	939 PM	0.6	250 yards	0	0
2	Williamson (Gabriels Overlook - Liberty Hill)	EF1	947 PM	0.5	150 yards	0	0
3	Hays (Dripping Springs)	EF0	853 PM	5.8	100 yards	0	0
4	Bexar (Balcones Heights)	EF1	816 PM	0.4	150 yards	0	0
5	Williamson (Liberty Hill)	EF1	922 PM	3.1	200 yards	0	0
6	Williamson (Brizendine Road)	EF0	947 PM	0.25	50 yards	0	0
7	Travis (Nameless Road)	EF1	858 PM	1.3	200 yards	0	0
8	Travis (Indian Springs)	EF0	937 PM	1.2	125 yards	0	0
9	Travis (Shady Hollow)	EF0	911 PM	2.5	200 yards	0	0
10	Bastrop (River Crossing)	EF1	943 PM	0.8	200 yards	0	0
<b>Reports &amp; Outlooks</b>							
<a href="#">SPC Storm Reports</a>		<a href="#">SPC Day 1 Outlook</a>			<a href="#">SPC Event Archive</a>		

<b>Tornado Statistics for May 25, 2015</b>							
#	Counties	Rating	Time (CST)	Length (miles)	Width	Fatalities	Injuries
1	Bastrop (Cedar Creek)	EF1	424 PM	3	1/4 mile	0	1
2	Wilson (Floresville)	EF0	610 PM	1	50 yards	0	0
3	Wilson (Pandora)	EF0	657 PM	1.75	150 yards	0	0
4	Gillespie (Fredericksburg)	EF1	1233 PM	2.4	100 yards	0	0
5	Blanco (Sandy)	EF0	104 PM	4.9	200 yards	0	0
6	Fayette (Swiss Alp)	EF1	616 PM	4	100 yards	0	0
7	Williamson (Wood Ranch)	EF1	245 PM	0.33	100 yards	0	0
<b>Reports &amp; Outlooks</b>							
<a href="#">SPC Storm Reports</a>		<a href="#">SPC Day 1 Outlook</a>			<a href="#">SPC Event Archive</a>		

## EF SCALE

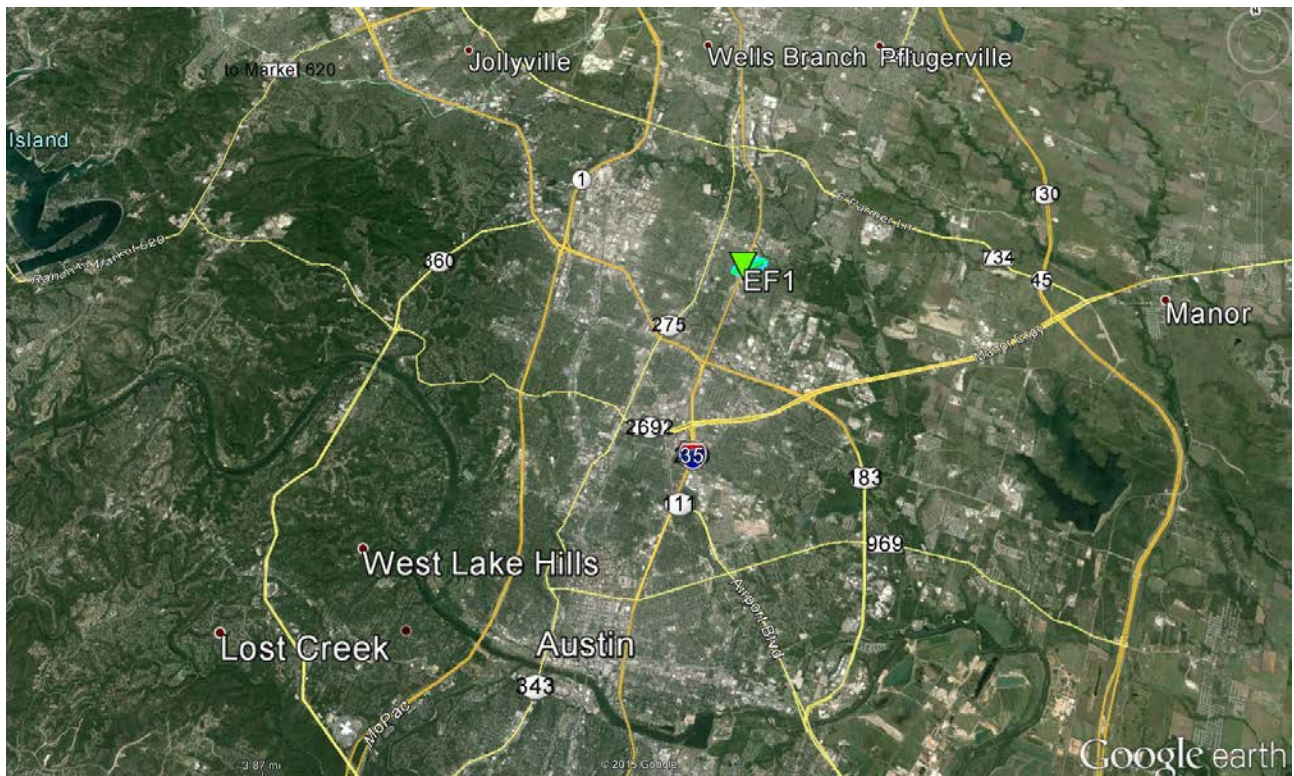
EF Rating	Wind Speeds	Expected Damage
<b>EF-0</b>	65-85 mph	<p>'Minor' damage: shingles blown off or parts of a roof peeled off, damage to gutters/siding, branches broken off trees, shallow rooted trees toppled.</p> 
<b>EF-1</b>	86-110 mph	<p>'Moderate' damage: more significant roof damage, windows broken, exterior doors damaged or lost, mobile homes overturned or badly damaged.</p> 
<b>EF-2</b>	111-135 mph	<p>'Considerable' damage: roofs torn off well constructed homes, homes shifted off their foundation, mobile homes completely destroyed, large trees snapped or uprooted, cars can be tossed.</p> 
<b>EF-3</b>	136-165 mph	<p>'Severe' damage: entire stories of well constructed homes destroyed, significant damage done to large buildings, homes with weak foundations can be blown away, trees begin to lose their bark.</p> 
<b>EF-4</b>	166-200 mph	<p>'Extreme' damage: Well constructed homes are leveled, cars are thrown significant distances, top story exterior walls of masonry buildings would likely collapse.</p> 
<b>EF-5</b>	> 200 mph	<p>'Massive/incredible' damage: Well constructed homes are swept away, steel-reinforced concrete structures are critically damaged, high-rise buildings sustain severe structural damage, trees are usually completely debarked, stripped of branches and snapped.</p> 

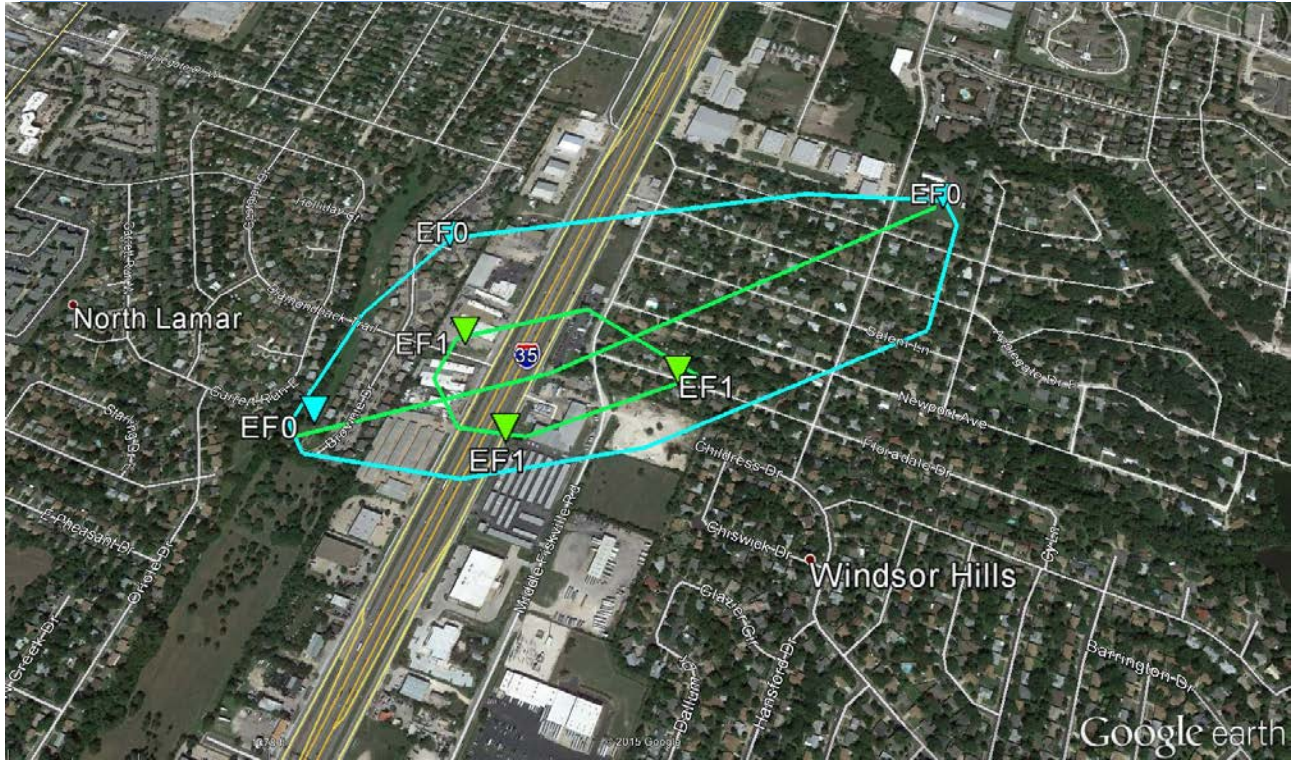
# INDIVIDUAL BREAKDOWN

*Saturday, May 23, 2015*

Austin Tornado Near Braker Lane (Travis County)									
#	Rating	Max Winds	Time	Start	End	Length	Width	Fatalities	Injuries
1	EF1	95 MPH	2139-2142	30.3650/-97.6850	30.3660/-97.6750	0.6 mi	250 yds	0	0

A NWS survey team concluded a tornado touched down on the west side of Interstate 35 in Austin near Brownie Drive and Diamondback Trail. The tornado peeled back a sheet metal roof to a business on the west side of interstate 35 and demolished a stone brick sign. The tornado also caused damage to roofing shingles...snapped large tree limbs and tossed a garbage dumpster at an apartment complex near Hardin court. The tornado moved east-northeast...crossing Interstate 35...where it caused significant damage to the second floor of a storage facility. The metal roof and walls were collapsed in on the southwest side of the storage facility. Ten small moving trailers were lifted and tossed in various directions...with two tossed back across to the west side of Interstate 35. Several power poles were blown over along the access roads of interstate 35. The tornado continued east-northeast through the Windsor Hills Subdivision...snapping numerous large tree limbs throughout the subdivision. Peak winds were estimated to be around 90-95 mph near the businesses along interstate 35.











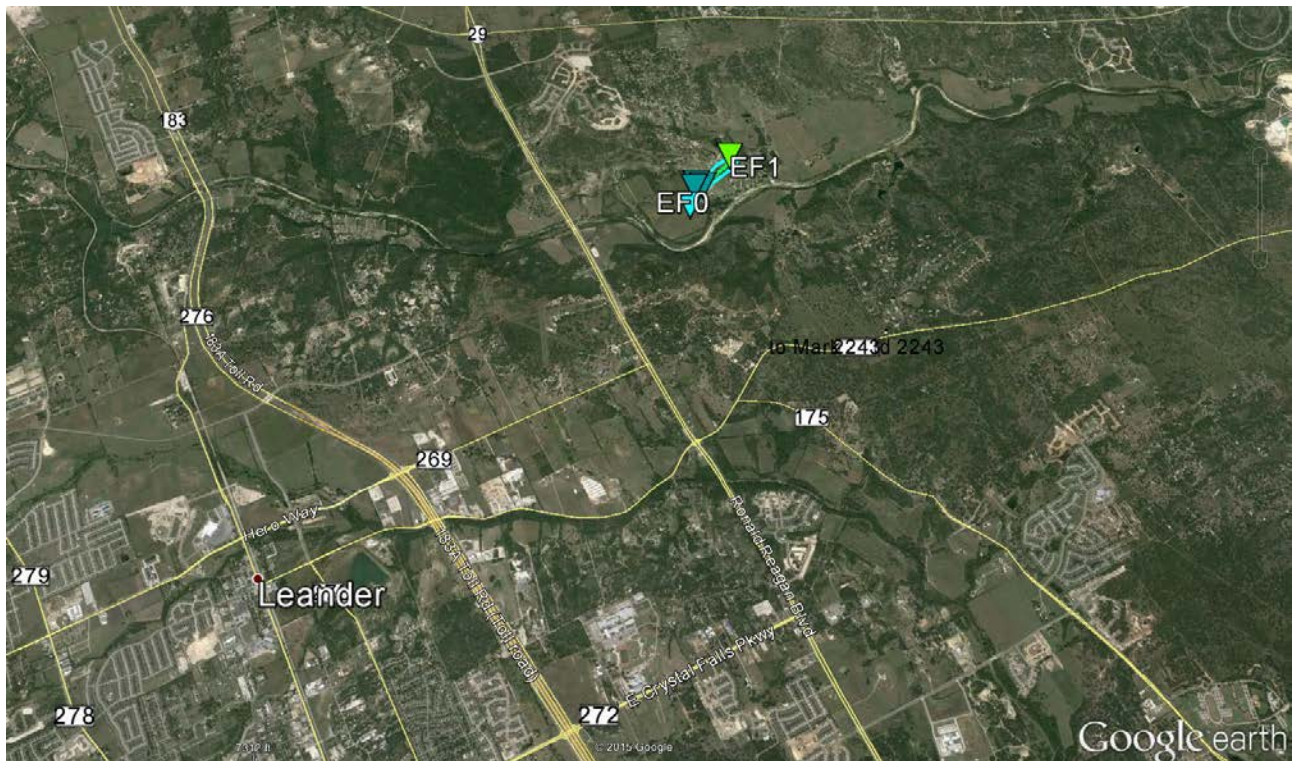


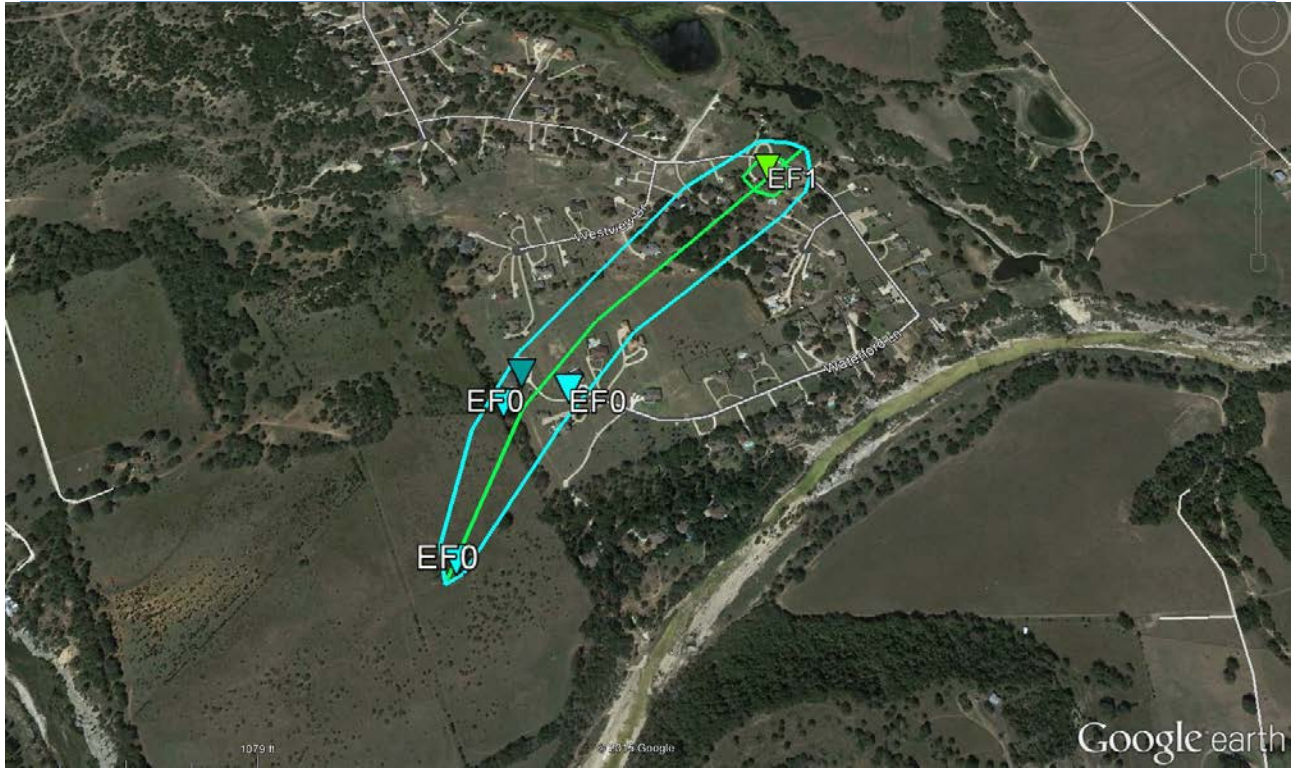


## Gabriels Overlook Tornado near Liberty Hill (Williamson County)

#	Rating	Max Winds	Time	Start	End	Length	Width	Fatalities	Injuries
2	EF1	100 MPH	2147-2150	30.6110/-97.8050	30.6170/-97.7990	0.5 mi	150 yds	0	0

A NWS storm survey team concluded a tornado touched down in the Gabriels Overlook Subdivision in Williamson County, roughly four miles northeast of Leander. The tornado snapped large tree limbs through its path length. The tornado also caused damage to two homes...with roof decking on the corner of one home removed...and over half the roof decking on the second home completely removed. Two large storage sheds were also picked up and moved 20 yards. Peak winds were estimated to be around 95-100 mph, where the most significant damage occurred to the second home.







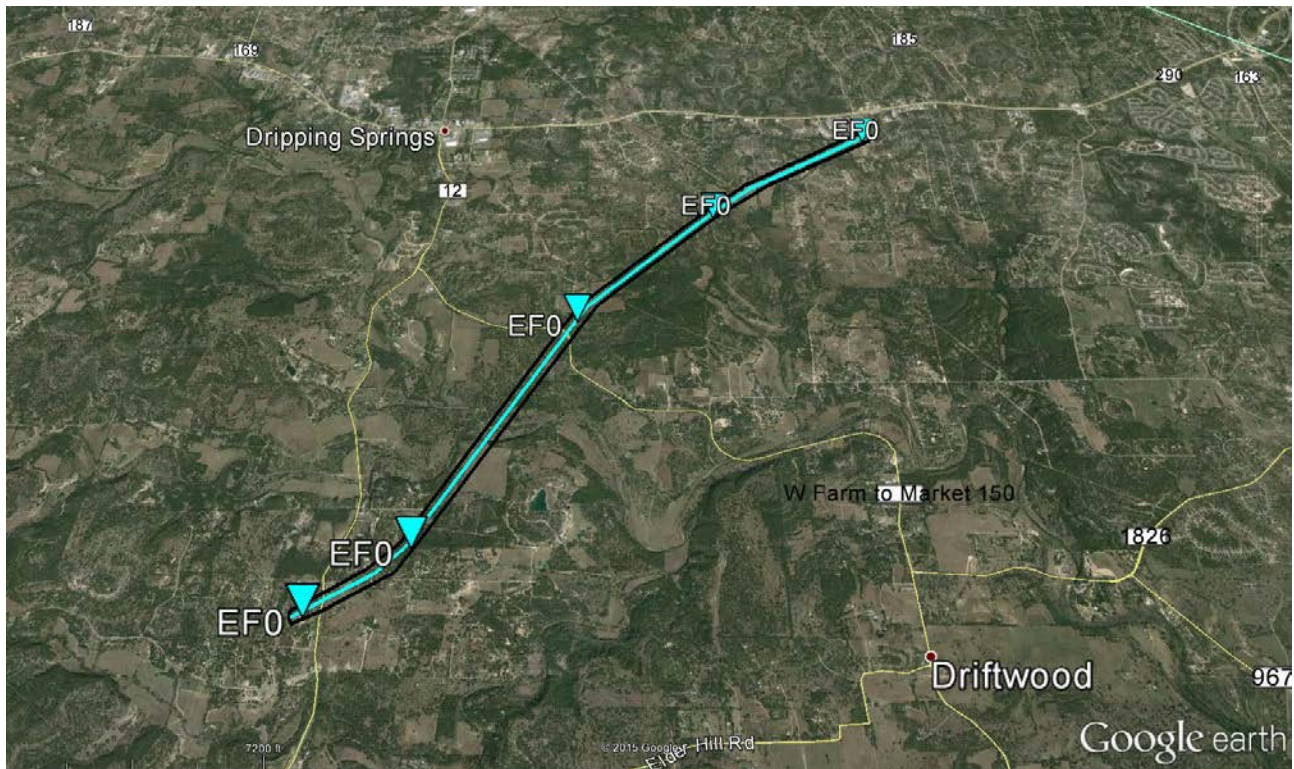




## Dripping Springs Tornado (Hays County)

#	Rating	Max Winds	Time	Start	End	Length	Width	Fatalities	Injuries
1	EF0	85 MPH	2053-2100	30.1269/-98.0909	30.1903/-98.0295	5.8 mi	100 yds	0	0

The NWS Storm Survey found a tornado initially touched down near the intersection of Ranch Road 12 and KC Memory Lane. The tornado traveled to the northeast and crossed FM-150 at Wood Springs. The tornado then crossed E. Creek Drive and lifted before crossing highway 290. The damage was primarily to trees...but about 15 homes suffered minor damage.







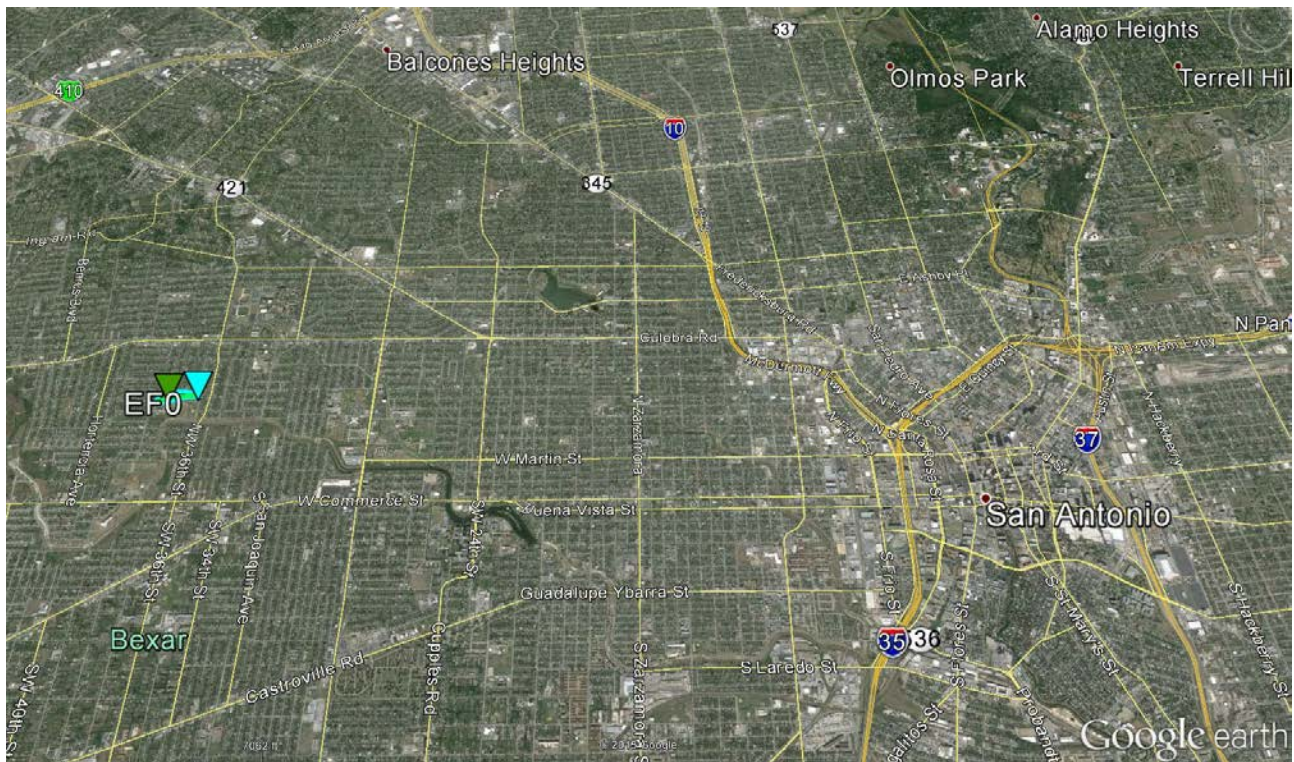


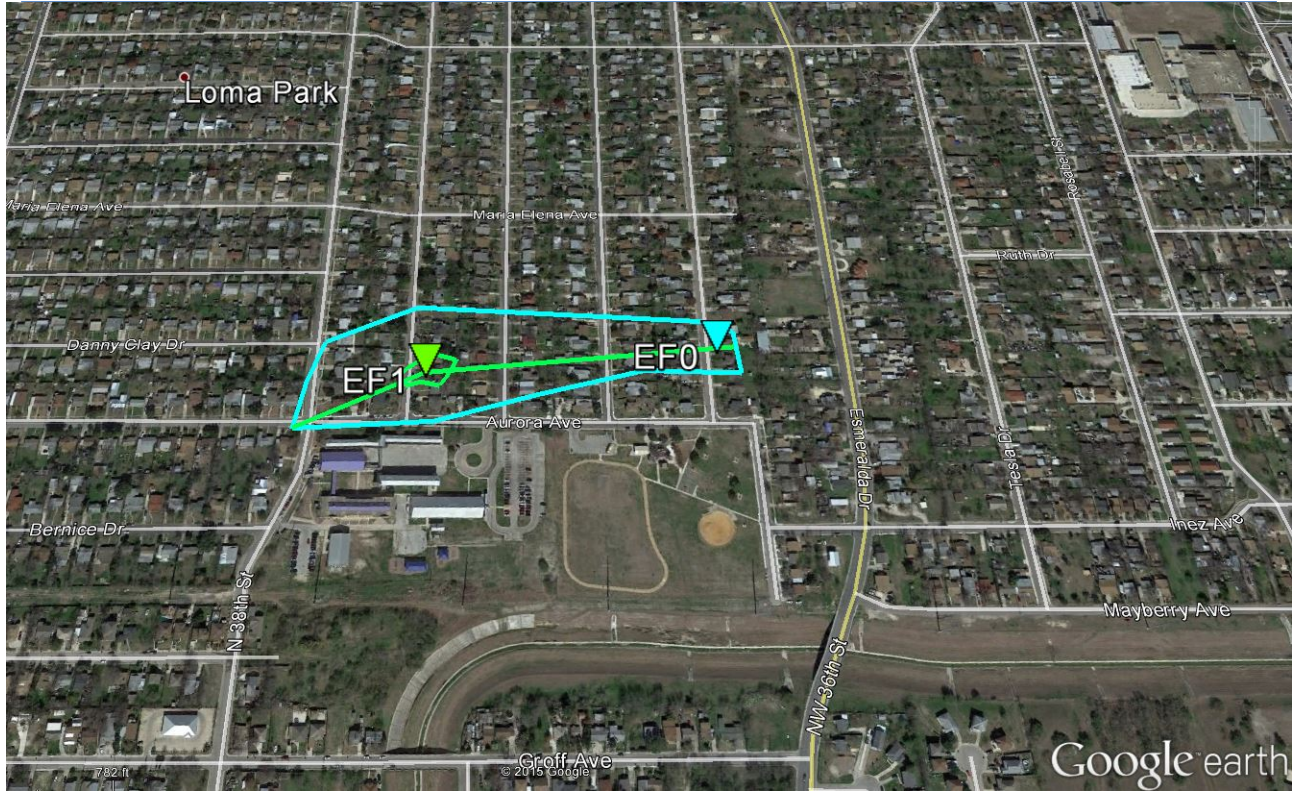


## Balcones Heights Tornado (Bexar County)

#	Rating	Max Winds	Time	Start	End	Length	Width	Fatalities	Injuries
1	EF1	100 MPH	2016-2017	29.4430/-98.5750	29.4434/-98.5750	0.4 mi	150 yds	0	0

The NWS Survey Team concluded a tornado touched down near the intersection of Maria Elena Avenue and NW 38th Street. The tornado traveled a couple of blocks before lifting near NW 36th Street. Damage was primarily to trees, but one house on Woley Drive did suffer major roof damage and several nearby houses suffered minor damage mainly to roofs and vehicles. Another home on Woley Drive was reported to have had a carport roof removed and displaced two blocks to the north onto the same street near Culebra Road.

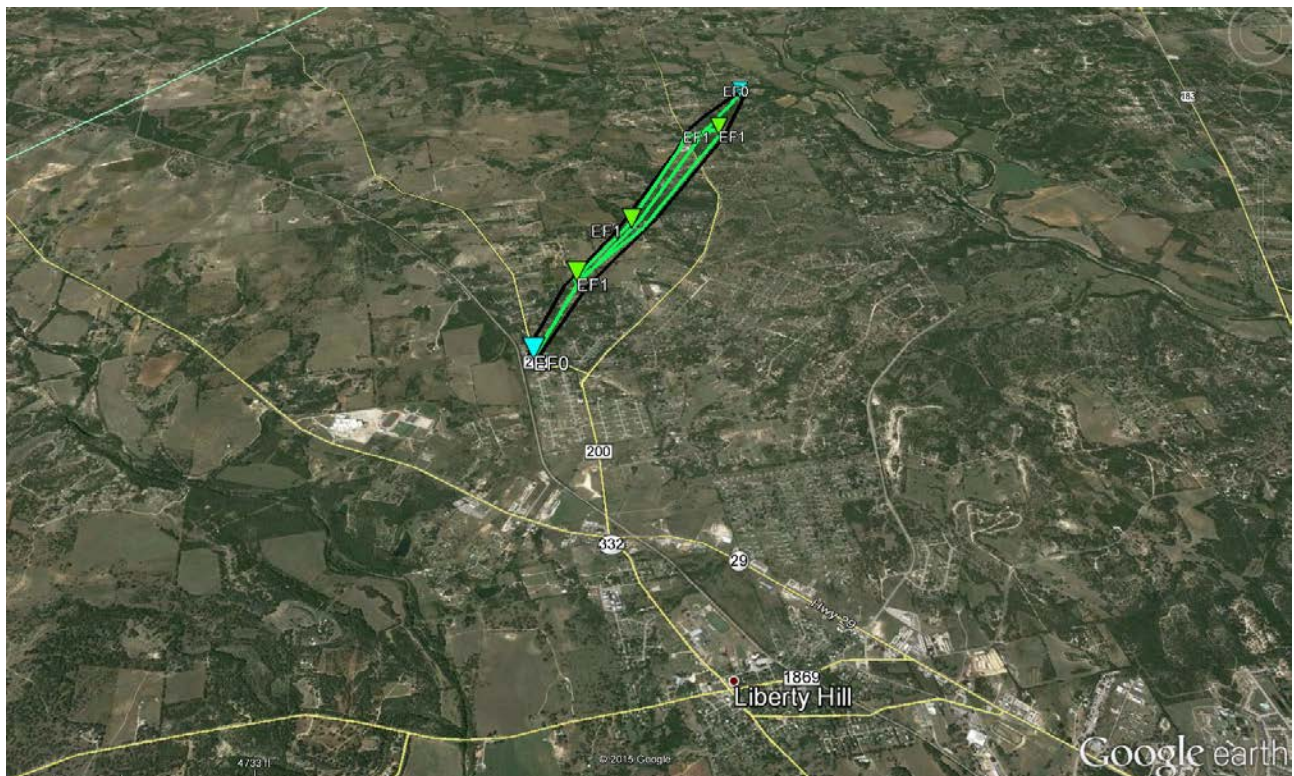




## Liberty Hill Tornado (Williamson County)

#	Rating	Max Winds	Time	Start	End	Length	Width	Fatalities	Injuries
1	EF1	100 MPH	2122-2134	30.6909/-97.9411	30.7338/-97.9272	3.1 mi	200 yds	0	0

The NWS Survey Team found an EF1 tornado initially touched down near County Road 201 just west of County Road 200. The tornado traveled to the north-northeast through the Indian Oaks and Carriage Oaks subdivisions before crossing County Road 200 and lifting near East Bear Creek Road. Damage was primarily to large oak trees, but about 7 to 10 homes suffered damage mainly to roofs. The most substantial damage was a complete loss of a chimney. Also, a barn lost part of its roof.











## Brizendine Road (Williamson County)

#	Rating	Max Winds	Time	Start	End	Length	Width	Fatalities	Injuries
1	EF0	85 MPH	2147-2147	30.7665/-97.9250	30.7702/-97.9255	0.25 mi	50 yds	0	0

The NWS Damage Survey Team concluded that a weak and brief EF0 tornado touched down near the end of Brizendine Road in far northwest Williamson County. Minor roof damage was observed along with tree damage.





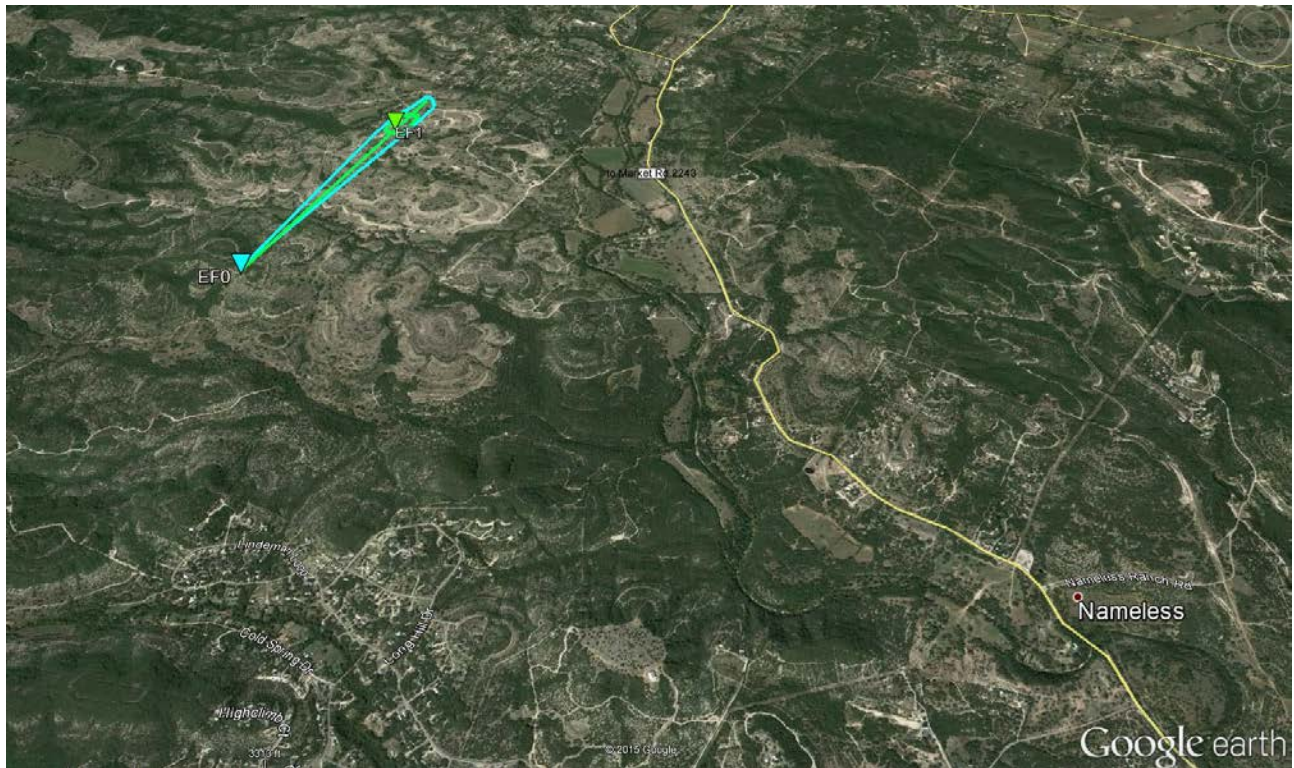




## Sunset Ranch/Nameless Road Tornado (Travis County)

#	Rating	Max Winds	Time	Start	End	Length	Width	Fatalities	Injuries
1	EF1	105 MPH	2058-2100	30.5465/-97.9708	30.5637/-97.9624	1.3 mi	200 yds	0	0

The NWS Damage Survey Team confirmed an EF1 tornado touched down on the Sunset Ranch in northwest Travis County. The tornado produced tree damage across the ranch and hit a residence which sustained roof damage along with damage to exterior of the residence as the front and back porches were destroyed. The tornado appears to have dissipated shortly after hitting the residence.







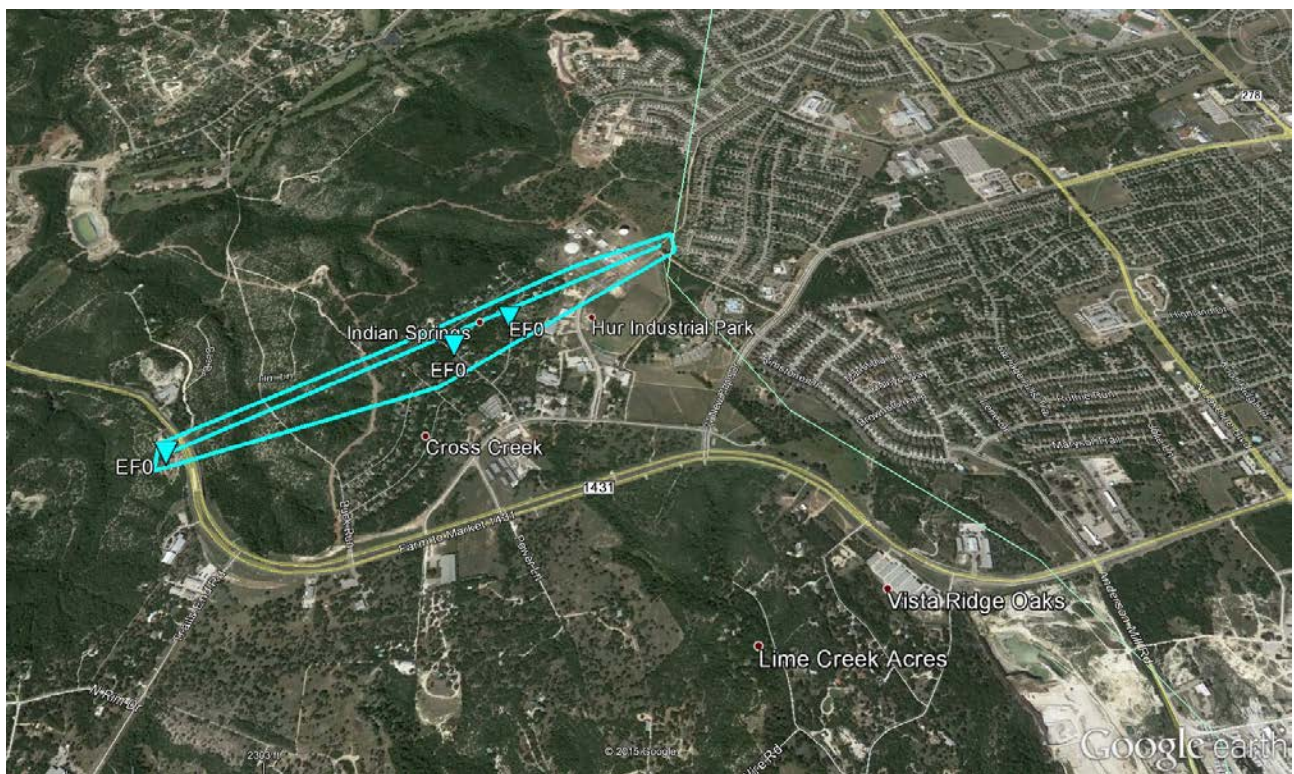




## Indian Springs [FM 1431] Tornado (Travis County)

#	Rating	Max Winds	Time	Start	End	Length	Width	Fatalities	Injuries
1	EF0	85 MPH	2137-2138	30.5155/-97.8883	30.5241/-97.8716	1.2 mi	125 yds	0	0

The NWS Survey Team found evidence of a weak EF0 tornado that initially touched down near FM 1431 and produced damage at a school. The tornado traveled northeast and caused considerable tree damage in the Indian Hills subdivision before dissipating right near the Williamson County line. Other wind damage was observed near New Hope Drive but could not conclusively be associated with this tornado path.





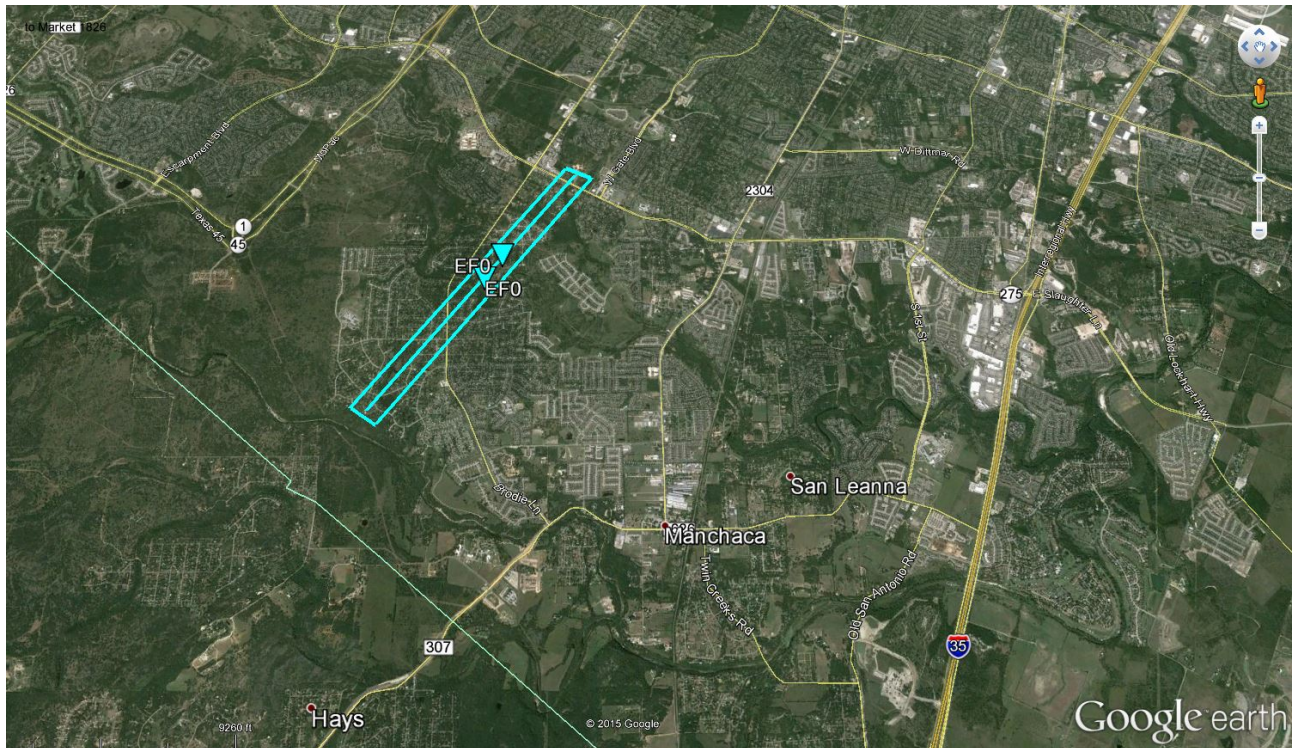




## Shady Hollow Tornado (Travis County)

#	Rating	Max Winds	Time	Start	End	Length	Width	Fatalities	Injuries
1	EF0	85 MPH	2111-2113	30.1533/-97.8694	30.1824/-97.8443	2.5 mi	200 yds	0	0

The NWS Storm Survey Team found evidence that an EF0 tornado went through the Shady Hollow area off Brodie Lane in South Austin. Numerous streets had significant tree damage along with some minor roof damage to some homes. The tornado moved northeast and appears to have dissipated near West Slaughter Lane. Wind damage was reported further northeast into the city of Austin but this damage could not conclusively be associated with this tornado path.







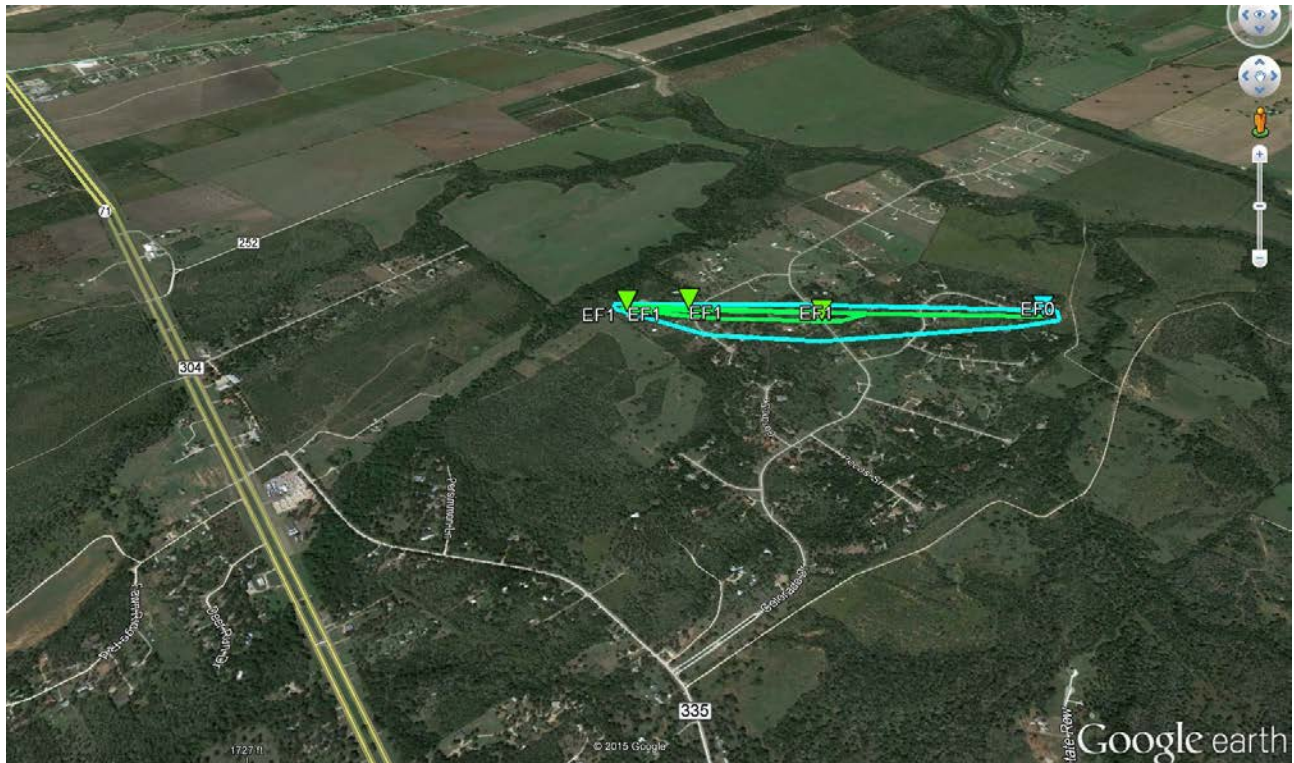




## River Crossing Tornado (Bastrop County)

#	Rating	Max Winds	Time	Start	End	Length	Width	Fatalities	Injuries
1	EF1	95 MPH	2143-2144	30.1692/-97.4940	30.1734/-97.4813	0.8 mi	200 yds	0	0

The NWS Survey Team concluded an EF1 tornado touched down around Frio Court in the River Crossing subdivision producing tree and roof damage at a residence. The tornado moved east-northeast and crossed several streets in the subdivision. Several trees were uprooted and large oak trees suffered substantial damage.







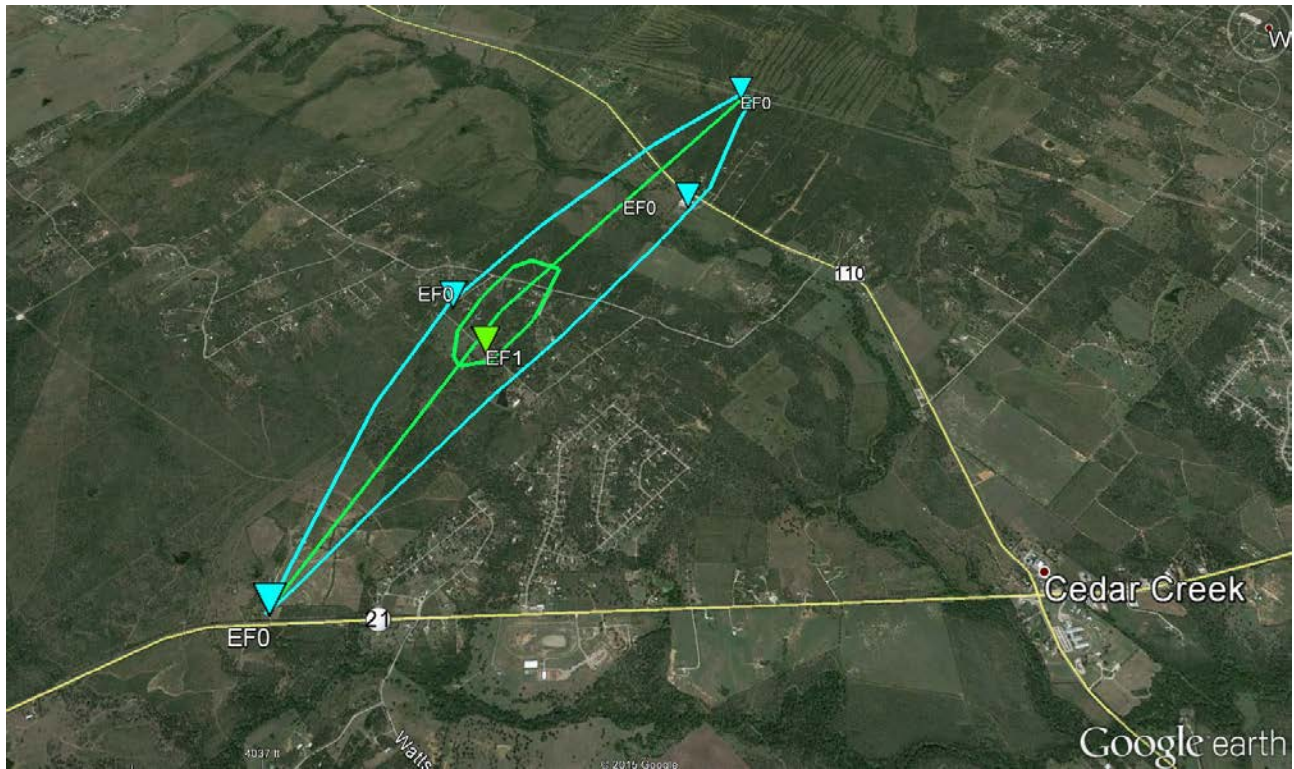


**Monday, May 25, 2015 (Memorial Day)**

**Cedar Creek Tornado (Bastrop County)**

#	Rating	Max Winds	Time	Start	End	Length	Width	Fatalities	Injuries
1	EF1	105 MPH	1624-1633	30.0850/-97.5420	30.1230/-97.5160	3.0 mi	0.25 mi	0	1

The NWS Storm Survey Team concluded a tornado touched down just west of Cedar Creek in Bastrop County. The tornado snapped and uprooted many trees. Twelve homes along the path of the tornado were damaged...with barns and a large greenhouse destroyed.







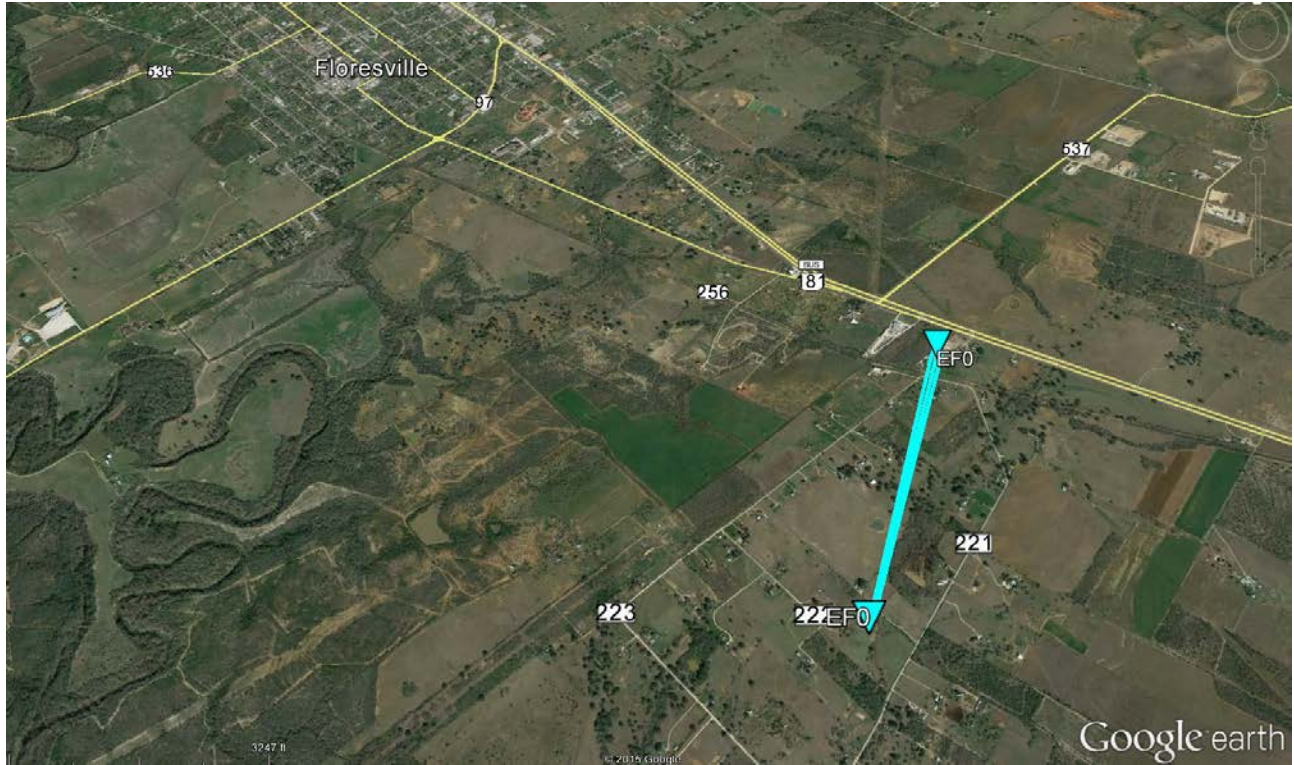




## Floresville Tornado (Wilson County)

#	Rating	Max Winds	Time	Start	End	Length	Width	Fatalities	Injuries
1	EF0	70 MPH	1810-1814	29.0990/-98.1300	29.1230/-98.1240	1.0 mi	50 yds	0	0

The NWS Storm Survey Team concluded a tornado touched down to the south of Floresville in Wilson County. A car port awning of a business was ripped off. A few tree limbs were also reported down.

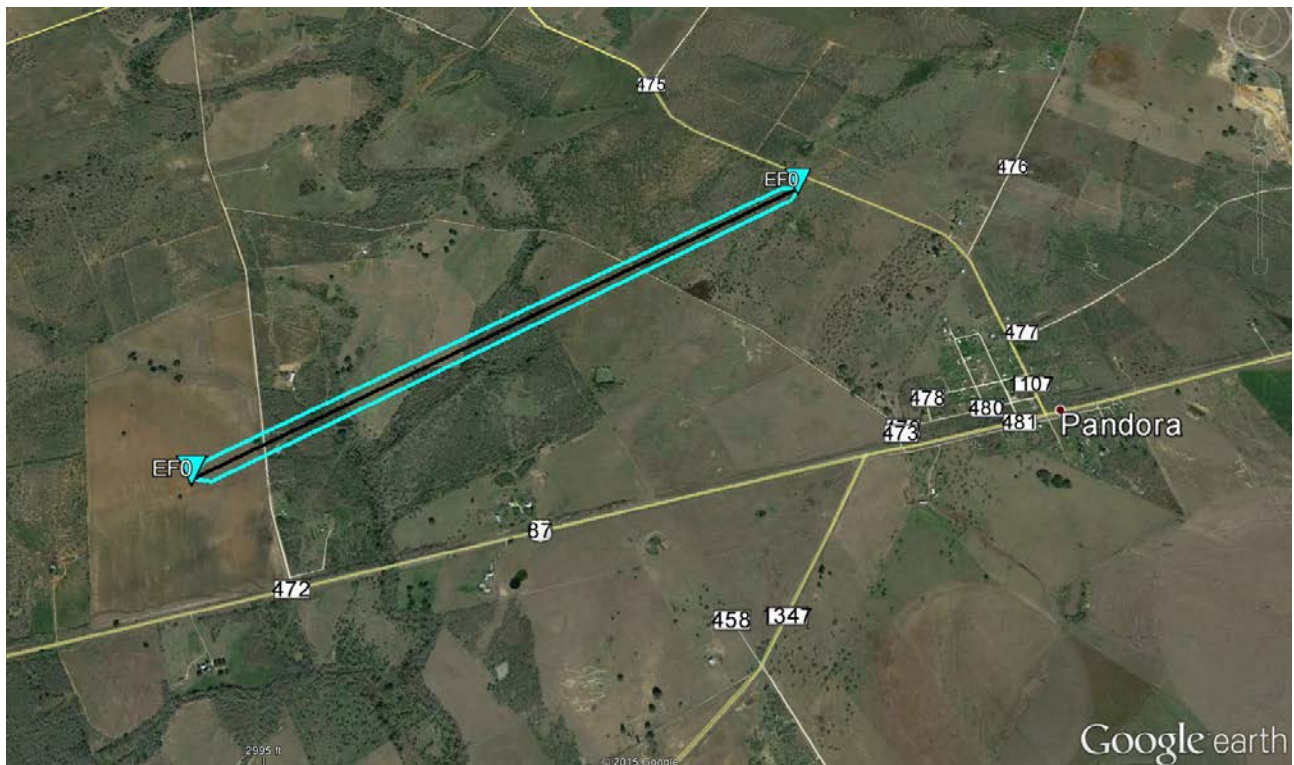




## Pandora Tornado (Wilson County)

#	Rating	Max Winds	Time	Start	End	Length	Width	Fatalities	Injuries
1	EF0	85 MPH	1857-1902	29.2470/-97.8740	29.2600/-97.8480	1.75 mi	150 yds	0	0

The NWS Storm Survey Team concluded a tornado touched down near Pandora, just west of County Road 472. The tornado damaged crops in an open field. The tornado crossed County Road 472 and continued to the east-northeast. Several large tree limbs were snapped and a few trees uprooted. A mobile home had damage to the skirting and a tin roof of a patio cover peeled off. A metal carport was also collapsed. Another home had shingle damage. A small barn was also heavily damaged.





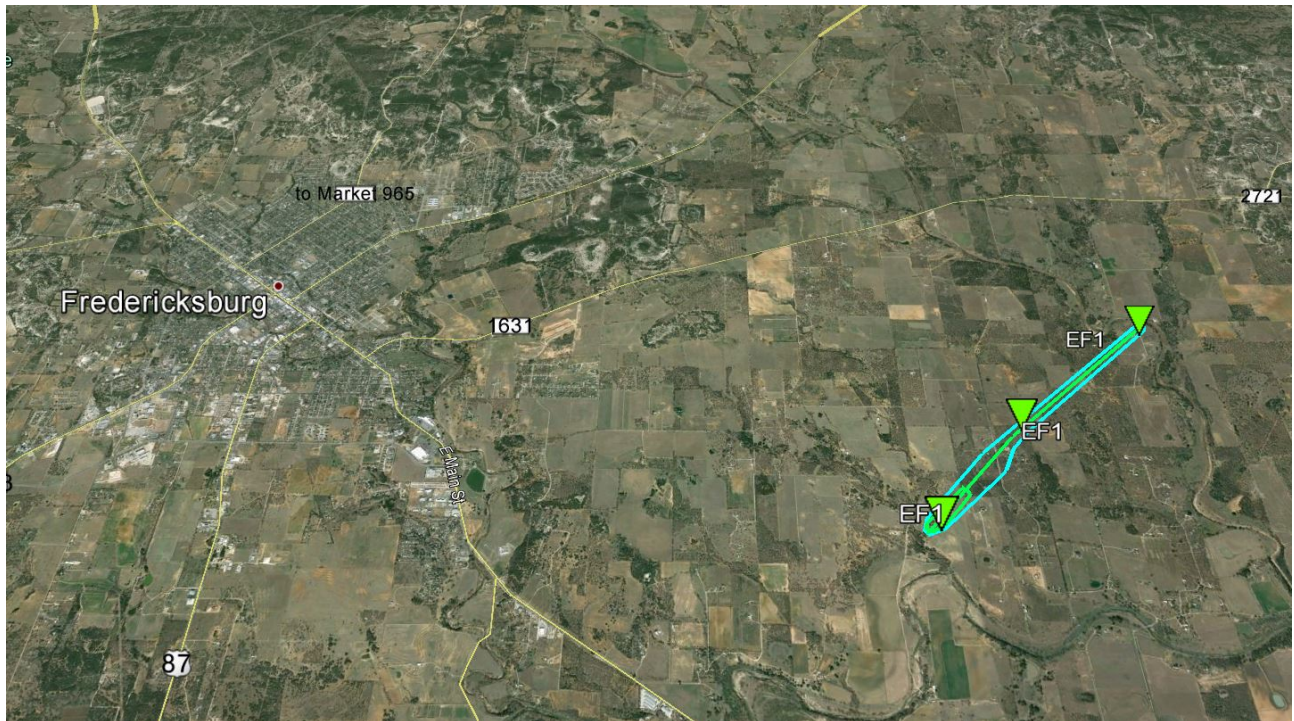




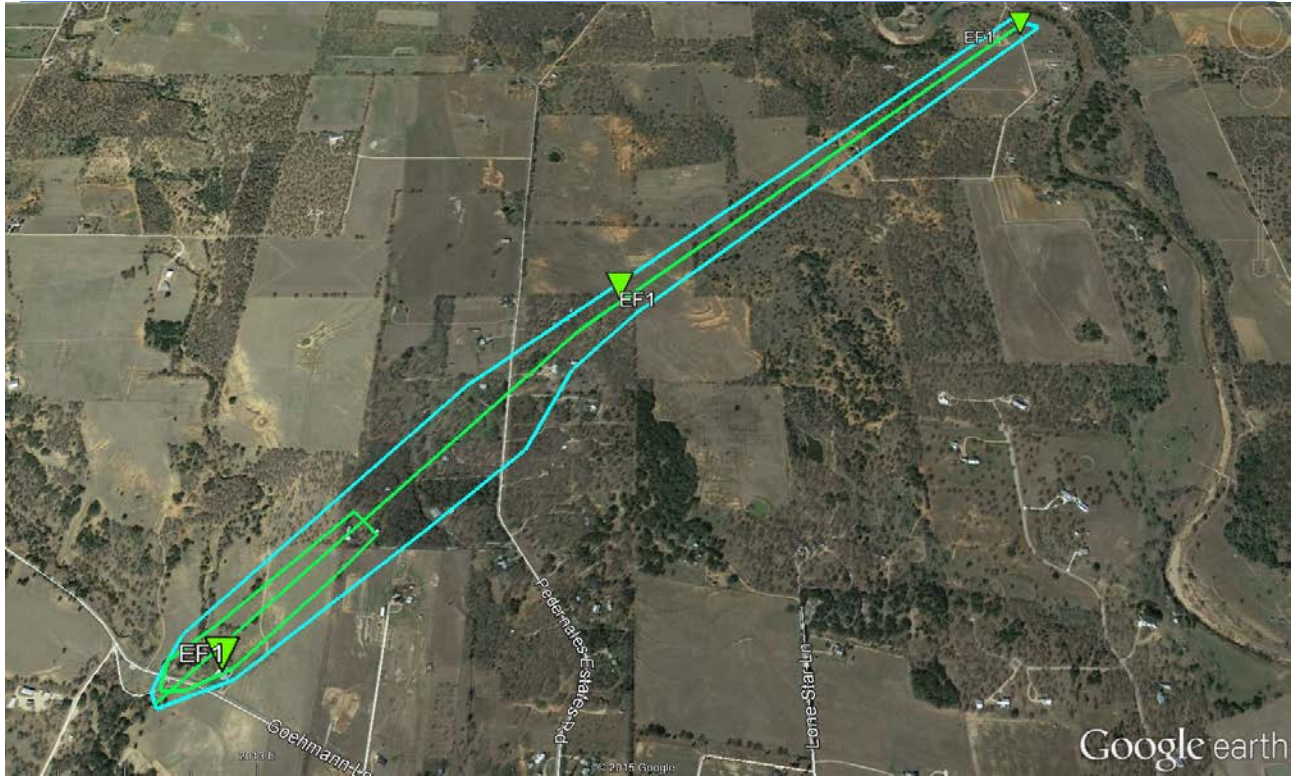
### Fredericksburg Tornado (Gillespie County)

#	Rating	Max Winds	Time	Start	End	Length	Width	Fatalities	Injuries
1	EF1	95 MPH	1233-1236	30.2462/-98.8038	30.2710/-98.7758	2.4 mi	100 yds	0	0

The NWS Storm Survey Team concluded a tornado touched down near Goehmann Lane on the eastern portions of Fredericksburg. The tornado traveled to the northeast crossing Pedernales Estates Road before lifting near Lonesome Trail. Damage was primarily to trees but a water pump station on Goehmann Lane lost its roof and one brick wall.











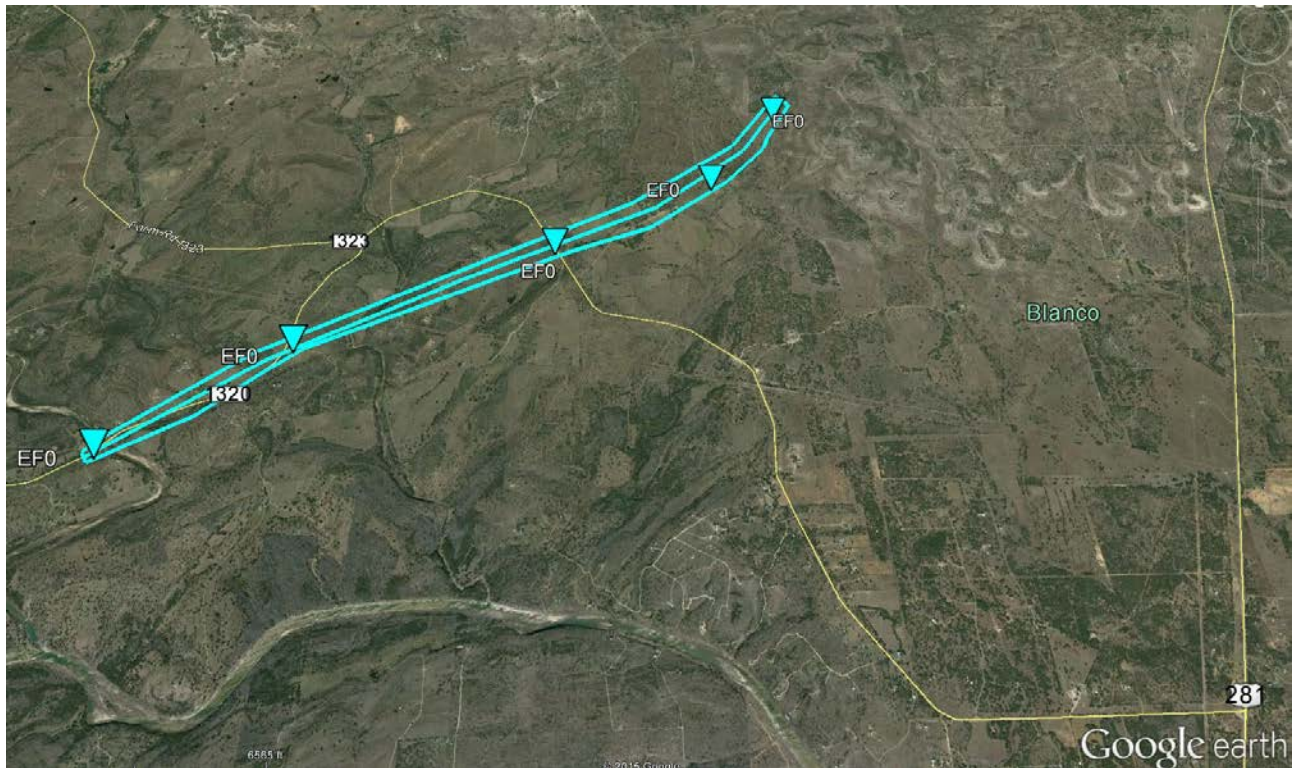




## Sandy Tornado (Blanco County)

#	Rating	Max Winds	Time	Start	End	Length	Width	Fatalities	Injuries
1	EF0	85 MPH	1304-1309	30.3375/-98.4931	30.3751/-98.4244	4.9 mi	200 yds	0	0

The NWS Storm Survey Team concluded a tornado touched down near the intersection of Ranch Road 1320 and North Grape Creek. The tornado traveled to the northeast along Ranch Road 1320 eventually crossing Ranch Road 1323 and lifting before highway 281. Damage was primarily to numerous trees which were uprooted or suffered damage to large limbs. Two barns suffered damage as well.







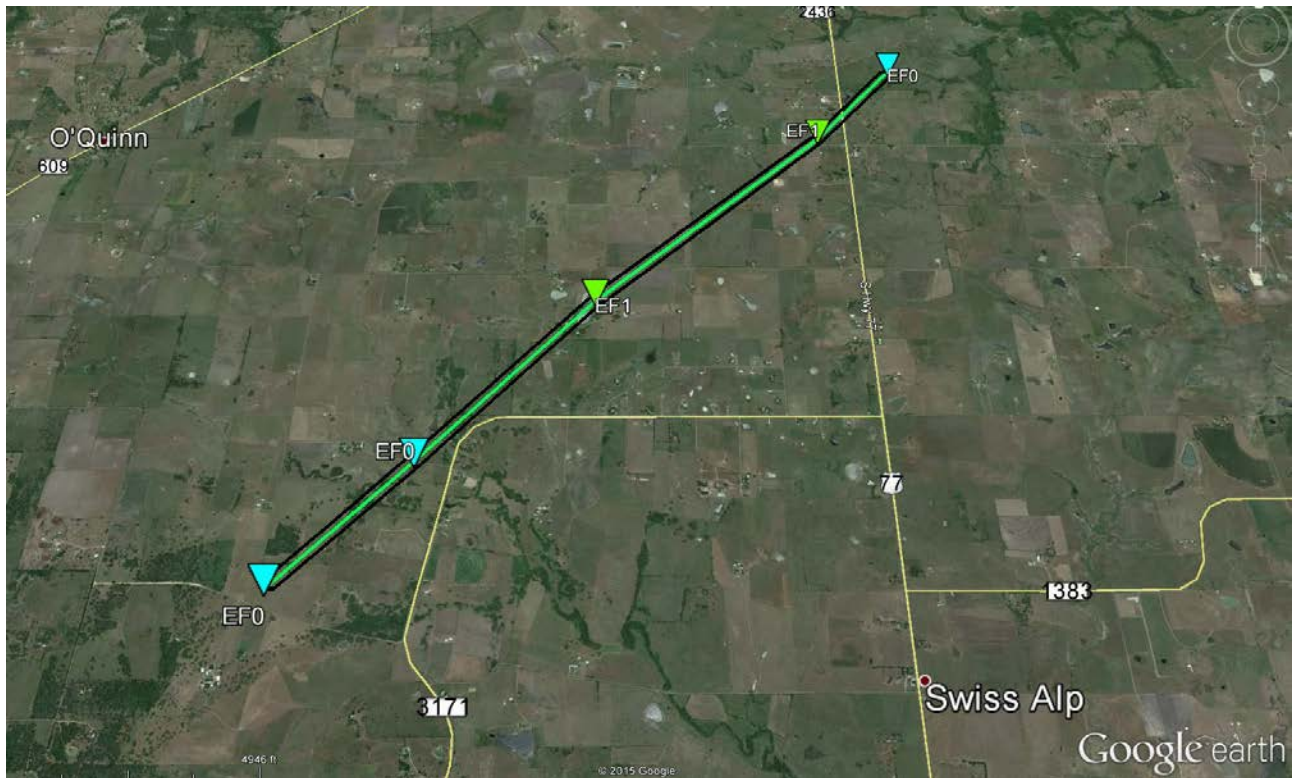




### Swiss Alp Tornado (Fayette County)

#	Rating	Max Winds	Time	Start	End	Length	Width	Fatalities	Injuries
1	EF1	105 MPH	1816-1824	29.7870/-96.9510	29.8310/-96.9060	4.0 mi	100 yds	0	0

The NWS Storm Survey Team concluded a tornado touched down just west of Swiss Alp and moved northeast for four miles. Two homes sustained substantial roof damage. Several trees were snapped at their trunks. Multiple barns sustained roof damage and a few small structures were destroyed.









### Wood Ranch Tornado (Williamson County)

#	Rating	Max Winds	Time	Start	End	Length	Width	Fatalities	Injuries
1	EF1	110 MPH	1945-1947	30.6380/-97.7315	30.6423/-97.7291	0.33 mi	100 yds	0	0

